



UNIVERSITI PUTRA MALAYSIA

***POTENTIAL ROLE OF ENDOGEIC EARTHWORM IN MITIGATING
BLOOD DISEASE IN BANANA PLANT***

TENG SUK KUAN

FS 2016 14



**POTENTIAL ROLE OF ENDOGEIC EARTHWORM IN MITIGATING
BLOOD DISEASE IN BANANA PLANT**

By

TENG SUK KUAN

**Thesis submitted to the School of Graduate Studies, Universiti Putra Malaysia, in
Fulfillment of the Requirements for the Degree of Doctor of Philosophy**

April 2016

All material contained within the thesis, including without limitation text, logos, icons, photographs and all other artwork, is copyright material of Universiti Putra Malaysia unless otherwise stated. Use may be made of any material contained within the thesis for non-commercial purposes from the copyright holder. Commercial use of material may only be made with the express, prior, written permission of Universiti Putra Malaysia.

Copyright © Universiti Putra Malaysia



Abstract of thesis presented to the Senate of Universiti Putra Malaysia in fulfillment of the requirement for the degree of Doctor of Philosophy

POTENTIAL ROLE OF ENDOGEIC EARTHWORM IN MITIGATING BLOOD DISEASE IN BANANA PLANT

By

TENG SUK KUAN

April 2016

Chairman : Nor Azwady Abd Aziz, PhD
Faculty : Science

Banana is an important fruit crop in many tropical countries including Malaysia. Besides the threat of Fusarium wilt and Moko disease, the occurrence of blood disease in Malaysia is another challenge to the cultivation. Therefore, there is an urgent need to search for effective treatment against the disease. Endogeic earthworms are known as soil fauna that improve soil properties and promote plant health, through their feeding, burrowing and casting activities. The present study aimed to evaluate the effect of *Pontoscolex corethrurus* (a common endogeic earthworm in the tropics) on blood disease in banana. Field sampling was conducted in a banana plantation infected with bacterial wilt disease. Identification of the causal pathogen was then carried out with morphological and molecular approaches. The pathogen obtained was confirmed to be blood disease bacterium (BDB). Secretions (cast and mucus) and soil inoculated with *P. corethrurus* were obtained to be tested on BDB *in vitro*. The results showed that earthworm mucus promoted the growth of *Pseudomonas* sp. that inhibited BDB. The interaction between *P. corethrurus*, BDB and banana was further evaluated through a glasshouse experiment. In the study, infected banana plantlets with earthworm inoculation showed less disease severity compared to un-inoculated ones, suggesting the role of endogeic earthworms in remediating blood disease. The finding was supported by nuclear magnetic resonance (NMR) and multivariate data analysis (MVDA) that revealed the presence of different groups of metabolites in the roots of the plantlets when inoculated with earthworms and BDB. The study suggested the potential role of endogeic earthworms (*P. corethrurus*) in enhancing soil microbial population and serve as possible bioremediation agent in plant disease management. Field trial and further investigations on the mechanisms that govern the changes are therefore essential to gain better understanding of this earthworm-BDB-host interaction.

Abstrak thesis yang dikemukakan kepada Senat Universiti Putra Malaysia sebagai memenuhi keperluan untuk ijazah Doktor Falsafah

PERANAN POTENSI CACING TANAH DALAM MENANGANI PENYAKIT DARAH PISANG

Oleh

TENG SUK KUAN

April 2016

Pengerusi : Nor Azwady Abd Aziz, PhD

Fakulti : Sains

Pisang merupakan tanaman buah-buahan yang penting kepada kebanyakan negara tropika termasuk Malaysia. Selain ancaman penyakit layu *Fusarium* dan Moko, kejadian penyakit darah menjadi satu lagi cabaran terhadap penanaman pisang di Malaysia. Oleh itu, usaha untuk mencari rawatan yang berkesan bagi menangani penyakit tersebut amat diperlukan. Cacing tanah dikenali sebagai fauna tanah yang memperbaiki sifat tanah dan meningkatkan kesihatan pokok dengan aktiviti pemakanan, pembentukan terowong dan penyahtinjaan. Kajian ini bertujuan untuk menilai kesan *Pontoscolex corethrurus* (sejenis cacing tanah yang biasa dijumpai di kawasan tropika) terhadap penyakit darah pisang. Persampelan dijalankan di sebuah ladang pisang yang dijangkiti oleh penyakit layu. Pengesanan terhadap penyebab penyakit dijalankan dengan kaedah morfologi dan molekul. Patogen telah disahkan sebagai *blood disease bacterium* (BDB). Rembesan (tinja dan mukus) dan tanah yang didiami oleh *P. corethrurus* digunakan untuk diuji kepada BDB secara *in vitro*. Ujian tersebut menunjukkan mukus cacing menggalakkan pertumbuhan *Pseudomonas* sp. yang menghalang pertumbuhan BDB. Kajian lanjut dalam rumah kaca dijalankan untuk mengkaji interaksi di antara *P. corethrurus*, BDB dan pisang. Kajian menunjukkan kehadiran cacing tanah dalam media tanaman telah mengurangkan tahap keseriusan penyakit darah dalam anak-anak pokok pisang. Ini menunjukkan potensi cacing tanah dalam mengurangkan kesan penyakit darah pisang. Dapatan kajian ini disokong oleh keputusan resonansi magnetik nuklear (NMR) dan analisis data multivariate (MVDA) yang menunjukkan kehadiran beberapa kumpulan sebatian kimia yang berlainan dalam bahagian akar anak-anak pokok apabila diinokulasi dengan cacing tanah dan BDB. Kajian ini mencadangkan potensi peranan cacing tanah (*P. corethrurus*) dalam meningkatkan populasi mikrob dan sebagai ejen bio-pemulihan dalam pengurusan penyakit tumbuhan. Kajian lapangan dan pemeriksaan lanjut terhadap mekanisme yang menyebabkan perubahan tersebut adalah penting untuk memperoleh pemahaman terperinci terhadap interaksi cacing tanah-BDB-hos.

ACKNOWLEDGEMENTS

I would like to extend my gratitude to my supervisor, Assoc. Prof. Dr. Nor Azwady Abd Aziz, who had provided a lot of guidance and assistance in my research and thesis writing. He has kept the research on track and at the same time allowed me to have much freedom in carrying out my research. Besides that, credits must also go to my co-supervisors, Assoc. Prof. Dr. Muskhazli Mustafa, Assoc. Prof. Dr. Intan Safinar Ismail and Dr. Rozeita Laboh who had provided constructive projections and facilities in their laboratories that allowed me to carry out the experiments without much hassle. Thank you for your generosity, time and experiences shared.

Supports were received by numerous people throughout the research. Laboratory experiments were made pleasurable with the kind supports from the laboratory assistants and research officers of Biology Department, Science Faculty, UPM and Malaysian Agricultural Research and Development Institute (MARDI). The research was sponsored by Malaysian Ministry of Education through the MyPhD program.

Special thanks to my friends, Sujithra Devi A/P Awinagiri Theva, Siti Rohani Sulaiman and Wong Wee Nee for their companion and help in the field and also in the laboratory. Last but not least, I would like to express my gratitude to my beloved family members and husband, Victor Lee who had showed unconditional care and support to me all the time. We are blessed to have our first born, Wallace Lee.

May God bless all of you.

This thesis was submitted to the Senate of Universiti Putra Malaysia and has been accepted as fulfillment of the requirement for the degree of Doctor of Philosophy. The members of the Supervisory Committee were as follows:

Nor Azwady Abd Aziz, PhD

Associate Professor
Faculty of Science
Universiti Putra Malaysia
(Chairman)

Muskhazli Mustafa, PhD

Associate Professor
Faculty of Science
Universiti Putra Malaysia
(Member)

Intan Safinar Ismail, PhD

Associate Professor
Faculty of Science
Universiti Putra Malaysia
(Member)

Rozeita Laboh, PhD

Deputy Director
Horticulture Research Centre (HR)
Malaysian Agricultural Research and Development Institute
(Member)

BUJANG KIM HUAT, PhD

Professor and Dean
School of Graduate Studies
Universiti Putra Malaysia

Date:

Declaration by graduate student

I hereby confirm that:

- this thesis is my original work;
- quotations, illustrations and citations have been duly referenced;
- this thesis has not been submitted previously or concurrently for any other degree at any other institutions;
- intellectual property from the thesis and copyright of thesis are fully-owned by Universiti Putra Malaysia, as according to the Universiti Putra Malaysia (Research) Rules 2012;
- written permission must be obtained from supervisor and the office of Deputy Vice-Chancellor (Research and Innovation) before thesis is published (in the form of written, printed or in electronic form) including books, journals, modules, proceedings, popular writings, seminar papers, manuscripts, posters, reports, lecture notes, learning modules or any other materials as stated in the Universiti Putra Malaysia (Research) Rules 2012;
- there is no plagiarism or data falsification/fabrication in the thesis, and scholarly integrity is upheld as according to the Universiti Putra Malaysia (Graduate Studies) Rules 2003 (Revision 2012-2013) and the Universiti Putra Malaysia (Research) Rules 2012. The thesis has undergone plagiarism detection software.

Signature: _____ Date: _____

Name and Matric No.: Teng Suk Kuan, GS33575

TABLE OF CONTENTS

	ABSTRACT	Page
	ABSTRAK	i
	ACKNOWLEDGEMENTS	ii
	APPROVAL	iii
	DECLARATION	iv
	LIST OF TABLES	vi
	LIST OF FIGURES	xi
	LIST OF ABBREVIATIONS	xii
		xv
CHAPTER		
1	INTRODUCTION	1
1.1	Problem statement	2
1.2	Objectives and research outline	2
2	LITERATURE REVIEW	4
2.1	Banana cultivation	4
2.1.1	Major banana cultivation constraints in Malaysia	4
2.1.2	Bacterial wilt diseases in banana	5
2.1.2.1	Moko disease	6
2.1.2.2	Bugtok disease	6
2.1.2.3	Blood disease	7
2.1.3	Common practices in disease control	7
2.2	Endogeic earthworms as the soil engineers	9
2.2.1	Endogeic earthworm and plant	10
2.2.2	Roles of endogeic earthworms in plant defense mechanisms	10
2.3	Plant defense mechanism	12
2.3.1	Plant primary metabolites	12
2.3.2	Plant secondary metabolites	13
2.3.2.1	Phenolic compounds	14
2.3.2.2	Terpenes and terpenoids	15
2.3.2.3	Nitrogen containing compounds	15
2.3.3	Secondary metabolites in plant defense mechanism	17
2.3.4	Secondary metabolites of banana	17
2.4	Metabolomics in plant system analysis	18
2.4.1	Application of NMR spectroscopy in metabolomics	20
3	GENERAL MATERIALS AND METHODS	21
3.1	Field sampling	21
3.1.1	Sampling of bacterial wilt causal agent	21
3.1.2	Earthworm sampling	22

4	IDENTIFICATION OF THE CAUSAL AGENT OF BACTERIAL WILT DISEASE IN BANANA THROUGH MORPHOLOGY AND MOLECULAR STUDIES	
4.1	Introduction	23
4.2	Materials and methods	24
4.2.1	Isolation of pathogen	24
4.2.2	Biochemical tests	25
4.2.2.1	Potassium hydroxide (KOH) test	25
4.2.2.2	Catalase oxidase test	25
4.2.2.3	Kovac's oxidative test	25
4.2.2.4	Triple sugar iron (TSI) medium	25
4.2.2.5	Oxidation fermentation (OF) basal medium	26
4.2.3	Molecular identifications	26
4.2.3.1	Bacteria DNA extraction	26
4.2.3.2	Polymerase chain reaction (PCR)	26
4.2.4	Koch's Postulate test	27
4.2.5	Pathogenicity test on tomato plantlets	27
4.3	Results	28
4.3.1	Isolation of pathogen for biochemical test	28
4.3.2	Molecular identification	28
4.3.3	Koch's Postulate Test	30
4.3.4	Pathogenicity test on tomato plantlets	32
4.4	Discussion	33
4.5	Conclusion	34
5	<i>In-vitro</i> STUDY ON THE EFFECT OF ENDOGEIC EARTHWORM ON BLOOD DISEASE BACTERIUM (BDB) IN BANANA	
5.1	Introduction	35
5.2	Materials and methods	35
5.2.1	Earthworm mucus and cast collection	36
5.2.2	Inhibition study	36
5.2.3	Obtaining pure microbial isolates that inhibit BDB	37
5.2.4	Molecular identification	37
5.3	Results	38
5.3.1	Effect of earthworm mucus, cast and worm worked soil on BDB	38
5.3.2	Molecular identification	43
5.4	Discussion	45
5.5	Conclusion	47
6	ROLE OF <i>Pontoscolex corethrurus</i> IN REMEDIATING BANANA BLOOD DISEASE	
6.1	Introduction	48
6.2	Materials and methods	48
6.2.1	Glasshouse planting	48
6.2.2	Histochemical preparations	49
6.3	Results	50
6.3.1	Glasshouse observations	50
6.3.1.1	Leaf chlorophyll index and DSI	50

6.3.2	Stem and root morphology	51
6.3.3	Stem and root anatomy	53
6.4	Discussion	54
6.5	Conclusion	56
7	EFFECT OF EARTHWORM AND BDB ON SECONDARY METABOLITES IN BANANA	
7.1	Introduction	57
7.2	Materials and methods	58
7.2.1	Determination of total phenolic content (TPC)	58
7.2.2	NMR spectroscopic analysis	59
7.2.2.1	Chemicals	59
7.2.2.2	Sample preparations for NMR analysis	59
7.2.2.3	^1H NMR spectroscopy	60
7.2.2.4	Multivariate statistical analysis	60
7.3	Results	60
7.3.1	Stem and root TPC	60
7.3.2	Visual inspection of ^1H NMR spectra of banana stem	61
7.3.3	PCA analysis of ^1H NMR data (banana stem)	61
7.3.4	Visual inspection of ^1H NMR spectra of banana root	63
7.3.5	PCA analysis of ^1H NMR data (banana root)	64
7.4	Discussion	66
7.5	Conclusion	69
8	CONCLUDING REMARKS AND FUTURE RECOMMENDATIONS	70
	REFERENCES	73
	APPENDICES	87
	BIODATA OF STUDENT	92
	LIST OF PUBLICATIONS	93

LIST OF TABLES

Table	Page
2.1 Different classes of phenolic compounds based on their basic structures (adapted from Lattanzio, 2013)	15
2.2 The application of plant metabolomics in different fields (adapted from Sumner <i>et al.</i> , 2003)	19
4.1 Primer sequences used for molecular identification of bacterial wilt in banana	27
4.2 Observation and indications of biochemical tests on pure bacteria colonies obtained from infected plant parts	29
5.1 DNA sequences obtained from NCBI for the construction of phylogenetic tree	38
6.1 Leaf symptom ratings (modified from Mak <i>et al.</i> , 2004; Denny and Hayward, 2001)	48
6.2 DSI scales for LSI (adapted from Mak <i>et al.</i> , 2004)	48
6.3 The disease severity index (DSI) for the plantlets from week 1-3 after BDB inoculation	50
7.1 TPC determined by spectrophotometry in stem and root of banana plantlets in different treatments (mg GAE/ g DW)	60

LIST OF FIGURES

Figure		Page
1.1	Research outline of the study	3
3.1	Disease symptoms of bacterial wilt in banana (a) wilting of host plant (b) brown discoloration of fruit pulps (c) brown discoloration and bacterial ooze from pseudostem	22
4.1	Pure colonies of bacteria on TZC medium that showed irregular round, creamy white with red centres	25
4.2	PCR amplification of genomic DNA for the four bacteria isolated from banana plant parts using 759F and 760R primer. Lane 1: negative control (SDW); Lane 2: isolate BK1; Lane 3: isolate BK2; Lane 4: isolate BK3; Lane 5: isolate BK4; Lane 6: positive control (pure culture of BDB, accession number: KF208537.1); Lane 7: 1 kbp ladder and Lane 8: 1.5 kbp ladder	30
4.3	PCR amplification of genomic DNA for the bacteria isolated from banana plant parts using 121F and 121R primer. Lane 1: 1.5 kbp ladder; Lane 2: 1 kbp ladder; Lane 3: negative control (SDW); Lane 4: isolate BK1; Lane 5: isolate BK2; Lane 6: isolate BK3 and Lane 7: isolate BK4	30
4.4	The symptoms on banana plantlets after Koch's Postulate test compared with control (SDW) (a and b) Curly and wilt symptom of BDB at 12 DAI (c) Yellowing and wilt symptom of BDB at 18 DAI	31
4.5	The developments of banana plantlet root inoculated with BDB and control (SDW) at 18 DAI (a) less development of root hair on plantlet inoculated with BDB; (b) cross sections of infected root and stem that showed brown discoloration of the vascular tissues	32
4.6	Pathogenicity test of four bacterial isolates (BK1, BK2, BK3 and BK4) on tomato plantlets and compared with control (SDW) at 7 DAI. No wilting symptom was observed on the plantlets	32
5.1	Covered container (with perforated pores) that was used to maintain earthworm culture	36

5.2	The effect of earthworm secretions on BDB (10^3 cell/ml) at 72 hours (a) Negative control (b) Positive control (SDW) (c) Earthworm mucus (d) Sterilized earthworm mucus (e) Soil without earthworm treatment (f) Earthworm cast (g) Worm-worked soil	39
5.3	The effect of earthworm secretions on BDB (10^5 cell/ml) at 72 hours (a) Negative control (b) Positive control (SDW) (c) Earthworm mucus (d) Sterilized earthworm mucus (e) Soil without earthworm treatment (f) Earthworm cast (g) Worm-worked soil	40
5.4	The effect of earthworm secretions on BDB (10^7 cell/ml) at 72 hours (a) Negative control (b) Positive control (SDW) (c) Earthworm mucus (d) Sterilized earthworm mucus (e) Soil without earthworm treatment (f) Earthworm cast (g) Worm-worked soil	41
5.5	Inhibition zones (cm) observed around earthworm mucus against BDB at different concentrations (10^3 , 10^5 and 10^7 cell/ml) from Day 1 to 7	42
5.6	Inhibition study of unknown bacterial isolates on TZC medium seeded with BDB (10^3 cell/ml) at 48 hours (A) No inhibition zone observed (B) Clear inhibition zone around the bacteria colony	43
5.7	PCR amplification of genomic DNA for the 9 unknown bacterial isolates. Lane 1: 1.5 kbp ladder; Lane 2: Negative control (SDW); Lane 3: Positive control (purified bacterial gDNA provided by First BASE Laboratories Sdn. Bhd.); Lane 4: Isolate M1C; Lane 5: Isolate M1D; Lane 6: Isolate M2B; Lane 7: Isolate M2C; Lane 8: Isolate M2E1; Lane 9: Isolate M2E2; Lane 10: Isolate M3C; Lane 11: Isolate M3D; Lane 12: Isolate M3E and Lane 13: 1.5 kbp ladder	43
5.8	Phylogenetic tree built using Tamura-Nei method with 1000 bootstrap replicates. The maximum likelihood bootstrap values that are more than 50% are shown above the branches	44
6.1	Chlorophyll content of banana plantlets from week 0 to week 5 (n = 7)	50
6.2	Banana plantlets of different treatments at week 3 after BDB inoculation	51
6.3	Stem section of plantlets of different treatments at week 3 after BDB inoculation (a) Control (b) BDB (c) BDB + EW and (d) EW	51

6.4	Root section of plantlets of different treatments at week 3 after BDB inoculation (a) Control (b) BDB (c) BDB + EW and (d) EW	52
6.5	Stem cross section of plantlets (a) Control (b) BDB (c) BDB + EW and (d) EW. Scale: 81 μm	52
6.6	Root cross section of plantlets (a) Control (b) BDB (c) BDB + EW and (d) EW. MX: metaxylem, PX: protoxylem. Scale: 81 μm	53
7.1	Gallic acid standard calibration curve with linear equation and coefficient of determination (R^2)	58
7.2	^1H spectra of banana stem methanolic extract (a) Control, (b) EW, (c) BDB and (d) BDB + EW. Identified signals: 1) sucrose 2) xylose 3) gluconate 4) xylose 5) valine. Asterisks denote unknown compounds	61
7.3	(a): PCA score plot of banana stem among the treatments (b): PCA loading scatter plot showing the ^1H NMR signals of compounds that are corresponding to the observation in the score plot	62
7.4	^1H NMR spectra of banana root methanolic extract (a) Control, (b) EW, (c) BDB and (d) BDB + EW. Identified signals: 1) sucrose 2) xylose 3) sulfoeysteine 4) gluconate 5) xylose 6) choline 7) alanine. Asterisks denote unknown compounds	64
7.5	(a): PCA score plot of banana root among the treatments (b): PCA loading scatter plot showing the ^1H NMR signals of compounds that are responsible for the group clustering	65

LIST OF ABBREVIATIONS

BDB	blood disease bacterium
cm	centimeter
CM	sterilized earthworm mucus
CPG	casamino acid-peptone-glucose
CS	control soil
EC	earthworm cast
EM	earthworm mucus
g	gram
g	gravity
Hz	hertz
kbp	kilo base pair
MHz	megahertz
mg	milligram
ml	milliliter
mm	millimeter
nm	nanometer
NMR	nuclear magnetic resonance
ppm	parts-per-million
rpm	revolutions per minute
SDW	sterilized distilled water
TPC	total phenolic content
TZC	tetrazolium chloride
µg	microgram
µl	microliter
µm	micrometer
v/v	volume/volume
WWS	worm-worked soil

CHAPTER 1

INTRODUCTION

Banana is one of the major fruit crops of the tropics and subtropics (Gantait *et al.*, 2011). In Malaysia, banana is the second most important fruit crop after durian. There is approximately 27 500 ha of land cultivated with banana and this contributed to 11% of the total land cultivated with fruits in the country (Husain and William, 2011). It has an annual production ranging from 250 000 - 280 000 metric tonnes, value at more than RM400 million. Both cooking and dessert cultivars are grown in the country with Berangan and Cavendish banana accounting for approximately 50% of the total cultivars grown (Husain and William, 2011).

Pests and diseases are major constraints to the banana production in Malaysia (Tengku Ab Malik *et al.*, 2010). Besides Moko disease, the recently detection of blood disease possess great threat to the banana cultivation in the country (Kogeethavani *et al.*, 2013). Blood disease is another bacterial wilt disease affecting banana that is caused by blood disease bacterium (BDB) (Fegan and Prior, 2005). The disease was reported in 90% of the provinces in Indonesia and caused low banana production (Hadiwiyono, 2011; Hadiwiyono *et al.*, 2007). The symptoms of blood disease are similar with Moko disease and vary depending on the growth stages of host plant and mode of infection (Eden-Green, 1994). Confusion or misinterpretation of disease could occur if one is not familiar with the diseases. Blood disease is difficult to control due to lack of fundamental knowledge on the ecology and epidemiology of the disease (Hadiwiyono, 2011). With the invasion of blood disease in Malaysia, more studies are needed to gain knowledge on the possible approaches to control the disease. The threat posed by blood disease had generated an urgent need to develop ideally, a cost effective and environment friendly approach in curbing the disease.

In the field, the use of fungicides and insecticides, particularly the synthetic chemicals on disease control can only provide short term solution. In addition, it may raise concerns on the consequences of these chemicals on human health and environment. This has prompted the need to search for alternate, biological approaches for plant disease control. These approaches are preferably to be able to utilize the interactions among organisms in the environment and minimize the impacts to the ecosystem.

Earthworms are known as soil engineers due to their activities that change the physico-chemical and structure of soils (Jones *et al.*, 1994). Their activities affect soil microorganisms, soil organic matter (SOM) regulation and plant growth (Meghvansi *et al.*, 2011). Earthworms are also found to increase the concentrations of various metabolites in plants (Lohmann *et al.*, 2009; Wuyts, 2006; Wurst *et al.*, 2004). Some of these compounds are involve in the natural defense mechanism in plants. Their concentrations would change in response to pathogenic infection (Lohmann *et al.*, 2009). Previous studies had documented the ability of *Pontoscolex corethrurus* in reducing the damage caused by root-feeding pathogens (Loranger-Merciris, *et al.*, 2012; Lafont *et al.*, 2007; Blouin *et al.*, 2005). As soil burrowers that have close relationship with the soil environment and plant system, *P. corethrurus* may serve as potential disease remediating agent. This in turn would promote plant health and increase its resistance towards diseases. However, there is limited knowledge on this earthworm-

plant interaction in controlling plant pathogens. Further studies are therefore important to gain more insight on this interaction.

1.1 Problem statement

Plant diseases are the major concern and lead to economic threats to the agricultural sector. In the attempt to control plant pathogens, pesticides are applied when the symptoms are visible, which are often too late to be effective (Ghorbani *et al.*, 2009). The use of pathogen resistant crops serves as an alternative as opposed to the usage of chemical pesticides. However, these plant varieties are usually scarce and do not meet the cultural standards (Wuyts, 2006). Therefore, a better approach will be concentrating on the prior-infection period and improving soil conditions that are favorable to the plants. Plants will be able to grow better and are less susceptible towards diseases with the improved soil and environmental conditions.

Besides the threat of Moko disease and Fusarium wilt, the occurrence of blood disease possesses another great challenge to the banana cultivation in Malaysia. The host range for Moko disease is very broad whereas blood disease is confined to banana (Álvarez *et al.*, 2010; Denny, 2006). The identification of causal agent is therefore important to search for control and cultural practices that are specific and effective to the disease.

Blood disease is one of the major disease in banana that occurs in Indonesia and, currently there is still no effective treatment against the disease (Hadiwiyono *et al.*, 2013). The disease is soil-borne and can be transmitted by insects and human activities (Hermanto *et al.*, 2013). Blood disease is highly virulent and has affected 27 out of 30 provinces in Indonesia (Hadiwiyono *et al.*, 2007). In view of the severe loss experienced by Indonesia, the search for effective and appropriate approach to be applied in the field is highly desired to mitigate the impact of blood disease. Knowledge and the advancement of controlling approach on blood disease are also useful to banana plantain infected with Moko disease, as the mode of infection and spread of both diseases are very similar.

Soil burrowing earthworms are known to have close relationship with plant root system and affect above and belowground organisms. However, knowledge on the effect of earthworms on the production of metabolites that are involved in plant defense mechanisms remains unclear. Such knowledge is important in understanding the contributions of earthworms on plant health and soil environment that help to maintain the ecological balance. It may also serve as potential mode of therapy for infected plant and soil systems in sustainable agriculture.

1.2 Objectives and research outline

The present study is carried out with the aim to determine the possible contributions of endogeic earthworm, *P. corethrurus* on blood disease in banana. The following objectives are developed to achieve the aim:

- To determine the causal agent of bacterial wilt disease in banana through morphological and molecular identifications

- To evaluate the effect of earthworm mucus, worm-worked soil and cast on blood disease bacterium (BDB) *in vitro*
- To determine the effect of earthworm on BDB and its host plant
- To evaluate the effect of earthworm and BDB on the metabolic changes in banana

The general research outline of the study is depicted in Figure 1.1.

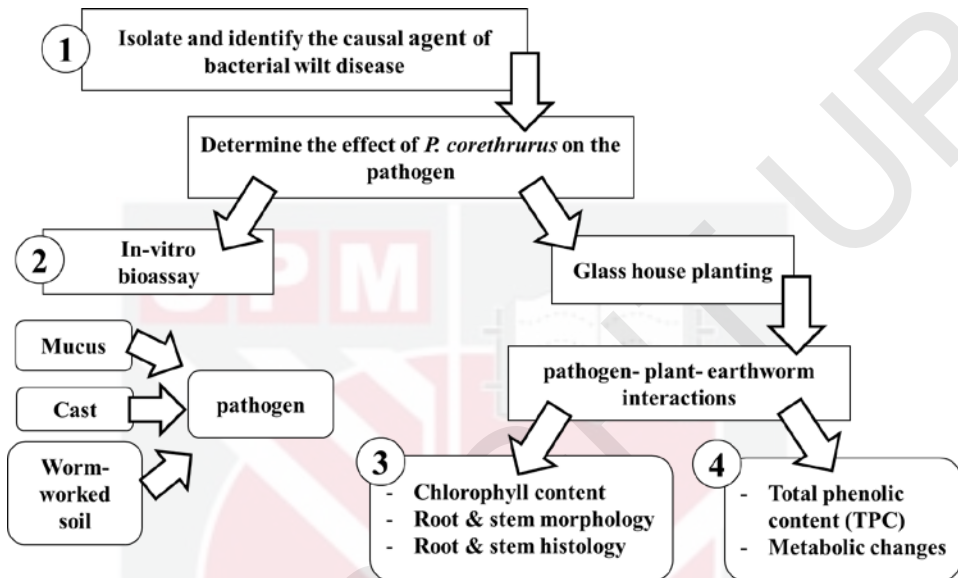


Figure 1.1: Research outline of the study

REFERENCES

- Abawi, G. S., & Widmer, T. L. (2000). Impact of soil health management practices on soilborne pathogens, nematodes and root diseases of vegetable crops. *Applied Soil Ecology*, 15(1): 37–47.
- Addai, Z. R., Abdullah, A., & Mutalib, S. A. (2013). Effect of extraction solvents on the phenolic content and antioxidant properties of two papaya cultivars. *Journal of Medicinal Plants Research*, 7(46): 3354–3359.
- Agrios, G. N. (2005). *Plant Pathology* (5th ed.). United States of America: Elsevier Academic Press.
- Aharoni, A., & Galili, G. (2011). Metabolic engineering of the plant primary–secondary metabolism interface. *Current Opinion in Biotechnology*, 22(2): 239–244.
- Akila, R., Rajendran, L., Harish, S., Saveetha, K., Raguchander, T., & Samiyappan, R. (2011). Combined application of botanical formulations and biocontrol agents for the management of *Fusarium oxysporum* f. sp. *cubense* (Foc) causing Fusarium wilt in banana. *Biological Control*, 57: 175–183.
- Allwood, J. W., Ellis, D. I., & Goodacre, R. (2008). Metabolomic technologies and their application to the study of plants and plant–host interactions. *Physiologia Plantarum*, 132: 117–135.
- Álvarez, B., Biosca, E. G., & López, M. M. (2010). On the life of *Ralstonia solanacearum*, a destructive bacterial plant pathogen. *Current Research, Technology and Education Topics in Applied Microbiology and Microbial Biotechnology*, 1: 267–279.
- Alvarez, B., Lopez, M. M., & Biosca, E. G. (2008). Survival strategies and pathogenicity of *Ralstonia solanacearum* phylotype II subjected to prolonged starvation in environmental water microcosms. *Microbiology*, 154: 3590–3598.
- Alvarez, J., C., Rodriguez, H. A., Rodriguez-Arango, E., Monsalve, Z., I., Morales O., J. G., & Arango I., R. E. (2013). Characterization of a differently expressed phenylalanine ammonia-lyase gene from banana induced during *Mycosphaerella fijiensis* infection. *Journal of Plant Studies*, 2(2): 35–46.
- Alvarez, M. A. (2014). Plant Secondary Metabolism. In M. A. Alvarez, *Plant Biotechnology for Health: From Secondary Metabolites to Molecular Farming* (pp. 15–31). Switzerland: Springer International Publishing.
- Araujo, Y., Luizão, F. J., & Barros, E. (2004). Effect of earthworm addition on soil nitrogen availability, microbial biomass and litter decomposition in mesocosms. *Biology and Fertility of Soils*, 39(3): 146–152.
- Aurore, G., Parfait, B., & Fahrasmene, L. (2009). Bananas, raw materials for making processed food products. *Trends in Food Science & Technology*, 20(2): 78–91.
- Baharuddin, B., Rudolph, K., & Niepold, F. (1994). Production of monospecific antiserum against the blood disease bacterium affecting banana and plantain. *Molecular Plant Pathology*, 84: 570–575.

- Beckles, D. M., & Roessner, U. (2012). Plant metabolomics: applications and opportunities for agricultural biotechnology. In A. Altman & P. Hasegawa (Eds.), *Plant Biotechnology and Agriculture: Prospects for the 21st Century* (pp. 67–81). USA: Academic Press.
- Beckman, C. H., & Mueller, W. C. (1969). Distribution of phenols in specialized cells of banana roots. *Phytopathology*, 60: 79–82.
- Bednarek, P., Schneider, B., Svatoš, A., Oldham, N. J., & Hahlbrock, K. (2005). Structural complexity, differential response to infection, and tissue specificity of indolic and phenylpropanoid secondary metabolism in *Arabidopsis* roots. *Plant Physiology*, 138(2): 1058–1070.
- Begum, R. A., Abidin, R. D. Z. R. Z., & Pereira, J. J. (2011). Initiatives and market mechanisms for climate change actions in Malaysia. *Journal of Environmental Science and Technology*, 4(1): 31–40.
- Bennett, R. N., & Wallsgrove, R. M. (1994). Secondary metabolites in plant defence mechanisms. *New Phytologist*, 617–633.
- Berger, S., Sinha, A. K., & Roitsch, T. (2007). Plant physiology meets phytopathology: plant primary metabolism and plant pathogen interactions. *Journal of Experimental Botany*, 58(15-16): 4019–4026.
- Bezemer, T. M., & van Dam, N. M. (2005). Linking aboveground and belowground interactions via induced plant defenses. *Trends in Ecology and Evolution*, 20: 617–624.
- Binet, F., Fayolle, L., Pussard, M., Crawford, J. J., Traina, S. J., & Tuovinen, O. H. (1998). Significance of earthworms in stimulating soil microbial activity. *Biology and Fertility of Soils*, 27(1): 79–84.
- Binks, R. H., Greenham, J. R., Luis, J. G., & Gowen, S. R. (1997). A phytoalexin from roots of *Musa acuminata* var. pisang sipulu. *Phytochemistry*, 45(1): 47–49.
- Bityutskii, N. P., Maiorov, E. I., & Orlova, N. E. (2012). The priming effects induced by earthworm mucus on mineralization and humification of plant residues. *European Journal of Soil Biology*, 50: 1–6.
- Blakemore, R. J. (2002). *Cosmopolitan earthworms: an eco-taxonomic guide to the peregrine species of the world* (First CD Edition). Australia: VermEcology.
- Blouin, M., Zuily-Fodil, Y., Pham-Thi, A.-T., Laffray, D., Reversat, G., Pando, A., Tondoh, J., & Lavelle, P. (2005). Belowground organism activities affect plant aboveground phenotype, inducing plant tolerance to parasites. *Ecology Letters*, 8(2): 202–208.
- Bolton, M. D. (2009). Primary metabolism and plant defense-fuel for the fire. *Molecular Plant-Microbe Interactions Journal*, 22(5): 487–497.
- Bonkowski, M., Griffiths, B. S., & Ritz, K. (2000). Food preferences for earthworms for soil fungi. *Pedobiologia*, 44: 666–676.
- Briones, M. J. I., Barreal, M. E., Harrison, A. C., & Gallego, P. P. (2011). Earthworms and nitrogen applications to improve soil health in an intensively cultivated kiwifruit orchard. *Applied Soil Ecology*, 49: 158–166.

- Brown, G. G. (1995). How do earthworms affect microfloral and faunal community diversity? *Plant and Soil*, 170: 209–231.
- Brown, G. G., Edwards, C. A., & Brussaard, L. (2004). How earthworms affect plant growth: burrowing into the mechanisms. In C. A. Edwards (Ed.), *Earthworm Ecology* (pp. 13–49). USA: CRC Press.
- Castellanos Suarez, D. E., Gigon, A., Puga-Freitas, R., Lavelle, P., Velasquez, E., & Blouin, M. (2014). Combined effects of earthworms and IAA-producing rhizobacteria on plant growth and development. *Applied Soil Ecology*, 80: 100–107.
- Chandler, S. (1995). The nutritional value of bananas. In S. R. Gowen (Ed.), *Bananas and Plantains* (pp. 74–89). London: Chapman and Hall.
- Chaudhry, Z., & Rashid, H. (2011). Isolation and characterization of *Ralstonia solanacearum* from infected tomato plants of Soan Skesar valley of Punjab. *Pakistan Journal of Botany*, 43(6): 2979–2985.
- Choi, Y. H., Tapias, E. C., Kim, H. K., Lefeber, A. W. M., Erkelens, C., Verhoeven, J. T. J., Brzin, J., Zel, J., & Verpoorte, R. (2004). Metabolic discrimination of *Catharanthus roseus* leaves infected by phytoplasma using ¹H-NMR spectroscopy and multivariate data analysis. *Plant Physiology*, 135(4): 2398–2410.
- Collingborn, F. M. B., Gowen, S. R., & Mueller-Harvey, I. (2000). Investigations into the biochemical basis for nematode resistance in roots of three *Musa* cultivars in response to *Radopholus similis* infection. *Journal of Agricultural and Food Chemistry*, 48(11): 5297–5301.
- Cowan, M. M. (1999). Plant products as antimicrobial agents. *Clinical Microbiology Reviews*, 12(4): 564–582.
- Curry, J. P., & Schmidt, O. (2007). The feeding ecology of earthworms – a review. *Pedobiologia*, 50(6): 463–477.
- de Ascensao, A. R. F. D. ., & Dubery, I. A. (2003). Soluble and wall-bound phenolics and phenolic polymers in *Musa acuminata* roots exposed to elicitors from *Fusarium oxysporum* f.sp. *cubense*. *Phytochemistry*, 63(6): 679–686.
- Deborde, C., & Jacob, D. (2014). MeRy-B, a metabolomic database and knowledge base for exploring plant primary metabolism. In G. Sriram (Ed.), *Plant Metabolism* (Vol. 1083, pp. 3–16). Totowa, NJ: Humana Press.
- Denny, T. P. (2006). Plant pathogenic *Ralstonia* species. In S. S. Gnanamanickam (Ed.), *Plant-Associated Bacteria* (pp. 573–644). Netherlands: Springer.
- Denny, T. P., & Hayward, A. C. (2001). Gram-negative bacteria. In N. W. Schaad, J. B. Jones, & W. Chun (Eds.), *Laboratory Guide for the Identification of Plant Pathogenic Bacteria* (3rd ed.). Minnesota, USA: APS Press.
- Doube, B. M., Stephens, P. M., Davoren, C. W., & Ryder, M. H. (1994). Interactions between earthworms, beneficial soil microorganisms and root pathogens. *Applied Soil Ecology*, 1: 3–10.
- Doube, B. M., Williams, P. M. L., & Willmott, P. J. (1997). The influence of two species of earthworm (*Aporrectodea trapezoides* and *Aporrectodea rosea*) on

- the growth of wheat, barley and faba beans in three soil types. *Soil Biology and Biochemistry*, 29: 503–509.
- Eden-Green, S. J. (1992). Diversity of *Pseudomonas solanacearum* and related bacteria in Southeast Asia. In G. L. Hartman & A. C. Hayward (Eds.), *Bacterial Wilt* (pp. 28–31). Kaoshing, Taiwan.
- Eden-Green, S. J. (1994). *Banana blood disease* (No. Musa disease Fact Sheet No. 3). Montpellier, France: International Network for the Improvement of Banana and Plantain (INIBAP).
- Edwards, C. A., & Bohlen, P. J. (1996). *Biology and ecology of earthworms*. UK: Chapman and Hall.
- Elmer, W. H. (2009). Influence of earthworm activity on soil microbes and soilborne diseases of vegetables. *Plant Disease*, 93(2): 175–179.
- Ewané, C. A., Lepoivre, P., de Bellaire, L. d. L., & Lassois, L. (2012). Involvement of phenolic compounds in the susceptibility of bananas to crown rot. A review. *Biotechnology, Agronomy, Society and Environment*, 16(3): 393–404.
- Fegan, M. (2005). Bacterial diseases of banana: evolution and ecology. In C. Allen, P. Prior, & A. C. Hayward (Eds.), *Bacterial Wilt Disease and the Ralstonia solanacearum Species Complex* (pp. 379–386). United States of America: APS Press.
- Fegan, M., & Prior, P. (2005). How complex is the “*Ralstonia solanacearum* species complex.” In C. Allen, P. Prior, & A. C. Hayward, *Bacterial wilt disease and the Ralstonia solanacearum Species Complex* (pp. 449–461). Minnesota, USA: APS Press.
- Fegan, M., & Prior, P. (2006). Diverse members of the *Ralstonia solanacearum* species complex cause bacterial wilts of banana. *Australasian Plant Pathology*, 35(2): 93.
- Fonte, S. J., Quintero, D. C., Velásquez, E., & Lavelle, P. (2012). Interactive effects of plants and earthworms on the physical stabilization of soil organic matter in aggregates. *Plant and Soil*, 359(1-2): 205–214.
- French, E. B., Gutarra, L., Aley, P., & Elphinstone, J. (1995). Culture media for *Ralstonia solanacearum* isolation, identification, and maintenance. *Fitopatologia*, 30(3): 126–130.
- Fukusaki, E., & Kobayashi, A. (2005). Plant metabolomics: potential for practical operation. *Journal of Bioscience and Bioengineering*, 100(4): 347–354.
- Fukushima, A., & Kusano, M. (2013). Recent progress in the development of metabolome databases for plant systems biology. *Frontiers in Plant Science*, 4.
- Fusilero, M. A., Mangubat, J., Ragas, R. E., Baguinon, N., Taya, H., & Rasco, E. (2013). Weed management systems and other factors affecting the earthworm population in a banana plantation. *European Journal of Soil Biology*, 56: 89–94.
- Gantait, V. V., Chatterjee, A., & Bhattacharya, T. (2011). Trophic groups of nematodes associated with banana plantation in Paschim Medinipur district of West Bengal, India. *Tropical Ecology*, 52(3): 331.

- Genin, S., & Denny, T. P. (2012). Pathogenomics of the *Ralstonia solanacearum* species complex. *Annual Review of Phytopathology*, 50(1): 67–89.
- George, G. G. (1995). How do earthworms affect microfloral and faunal community diversity? In H. P. Collins, G. P. Robertson, & M. J. Klug (Eds.), *The Significance and Regulation of Soil Biodiversity* (pp. 247–269). Kluwer Academic.
- Ghorbani, R., Wilcockson, S., Koocheki, A., & Leifert, C. (2008). Soil management for sustainable crop disease control: a review. *Environmental Chemistry Letters*, 6(3): 149–162.
- Ghorbani, R., Wilcockson, S., Koocheki, A., & Leifert, C. (2009). Soil management for sustainable crop disease control: a review. In E. Lichtfouse (Ed.), *Organic Farming, Pest Control and Remediation of Soil Pollutants* (pp. 177–201). New York: Springer Dordrecht Heidelberg.
- Gleadow, R. M., & Woodrow, I. E. (2002). Constraints on effectiveness of cyanogenic glycosides in herbivore defense. *Journal of Chemical Ecology*, 28(7): 1301–1313.
- Goyal, S. (2013). Ecological role of alkaloids. In K. G. Ramawat & J.-M. Mérillon (Eds.), *Natural Products* (pp. 149–171). Berlin, Heidelberg: Springer Berlin Heidelberg.
- Goyal, S., Lambert, C., Cluzet, S., Mérillon, J. M., & Ramawat, K. G. (2012). Secondary metabolites and plant defence. In J. M. Mérillon & K. G. Ramawat (Eds.), *Plant Defence: Biological Control* (pp. 109–138). Dordrecht: Springer Netherlands.
- Hadacek, F. (2002). Secondary metabolites as plant traits: current assessment and future perspectives. *Critical Reviews in Plant Sciences*, 21(4): 273–322.
- Hadiwiyono. (2011). Blood bacterial wilt disease of banana: the distribution of pathogen in infected plant, symptoms and potentiality of diseased tissues as source of infective inoculums. *Nusantara Bioscience*, 3: 112–117.
- Hadiwiyono, Subandiyah, S., Sumardiyono, C., Widada, J., & Fegan, M. (2007). Effect of altitude and wounding on blood disease progress of plantain. *Jurnal Hama Dan Penyakit Tumbuhan Tropika*, 7(2): 111–116.
- Hadiwiyono, Subandiyah, S., Widada, J., Fegan, M., & Taylor, P. (2013). Diversity of endophytic bacteria in symptomatic and asymptomatic infected bananas from endemic area of blood disease bacterium based on RISA. *ARPN Journal of Science and Technology*, 3(4): 376–381.
- Häkkinen, S. H., & Törrönen, A. R. (2000). Content of flavonols and selected phenolic acids in strawberries and *Vaccinium* species: influence of cultivar, cultivation site and technique. *Food Research International*, 33: 517–524.
- Harish, S., Kavino, M., Kumar, N., Balasubramanian, P., & Samiyappan, R. (2009). Induction of defense-related proteins by mixtures of plant growth promoting endophytic bacteria against Banana bunchy top virus. *Biological Control*, 51(1): 16–25.
- Hayward, A. C. (2006). Fruit rots of banana caused by *Ralstonia solanacearum* race 2: questions of nomenclature, transmission and control. *InfoMusa*, 15: 7–10.

- Heredia, R. B., Dueñas, S., Castillo, L., Ventura, J. J., Silva Briano, M., Posadas del Rio, F., & Rodríguez, M. G. (2008). Autofluorescence as a tool to study mucus secretion in *Eisenia foetida*. *Comparative Biochemistry and Physiology Part A: Molecular & Integrative Physiology*, 151(3): 407–414.
- Hermanto, C., Eliza, & Emilda, D. (2013). Bunch management of banana to control blood disease. *Australasian Plant Pathology*, 42(6): 653–658.
- Heyman, H. M., & Meyer, J. J. M. (2012). NMR-based metabolomics as a quality control tool for herbal products. *South African Journal of Botany*, 82: 21–32.
- Holscher, D., Dhakshinamoorthy, S., Alexandrov, T., Becker, M., Bretschneider, T., Buerkert, A., Crecelius, A. C., De Waele, D., Elsen, A., Heckel, D. G., Heklau, H., Hertweck, C., Kai, M., Knop, K., Krafft, C., Maddula, R. K., Matthaus, C., Popp, J., Schneider, B., Schubert, U. S., Sikora, R.A., Svato, A., & Swennen, R. L. (2014). Phenalenone-type phytoalexins mediate resistance of banana plants (*Musa* spp.) to the burrowing nematode *Radopholus similis*. *Proceedings of the National Academy of Sciences*, 111(1): 105–110.
- Hong, Y.-S., Martinez, A., Liger-Belair, G., Jeandet, P., Nuzillard, J.-M., & Cilindre, C. (2012). Metabolomics reveals simultaneous influences of plant defence system and fungal growth in *Botrytis cinerea*-infected *Vitis vinifera* cv. Chardonnay berries. *Journal of Experimental Botany*, 63(16): 5773–5785.
- Huang, T., Jander, G., & de Vos, M. (2011). Non-protein amino acids in plant defense against insect herbivores: Representative cases and opportunities for further functional analysis. *Phytochemistry*, 72(13): 1531–1537.
- Hume, E. A., Horrocks, A. J., Fraser, P. M., Curtin, D., Meenken, E. D., Chng, S., & Beare, M. H. (2015). Alleviation of take-all in wheat by the earthworm *Aporrectodea caliginosa* (Savigny). *Applied Soil Ecology*, 90: 18–25.
- Husain, M., & William, R. (2011). Status of banana cultivation and disease incidences in Malaysia. Department of Agriculture Malaysia.
- Ito, S., Ushijima, Y., Fujii, T., Tanaka, S., Kameya-Iwaki, M., Yoshiwara, S., & Kish, F. (1998). Detection of viable cells of *Ralstonia solanacearum* in soil using a semiselective medium and a PCR technique. *Journal of Phytopathology*, 146: 379–384.
- Jana, U., Barot, S., Blouin, M., Lavelle, P., Laffray, D., & Repellin, A. (2010). Earthworms influence the production of above- and belowground biomass and the expression of genes involved in cell proliferation and stress responses in *Arabidopsis thaliana*. *Soil Biology and Biochemistry*, 42: 244–252.
- Jégou, D., Schrader, S., Diestel, H., & Cluzeau, D. (2001). Morphological, physical and biochemical characteristics of burrow walls formed by earthworms. *Applied Soil Ecology*, 17(2): 165–174.
- Jie, L., Zifeng, W., Lixiang, C., Hongming, T., Patrik, I., Zide, J., & Shining, Z. (2009). Artificial inoculation of banana tissue culture plantlets with indigenous endophytes originally derived from native banana plants. *Biological Control*, 51(3): 427–434.
- Jones, C. G., Lawton, J. H., & Shachak, M. (1994). Organisms as ecosystem engineers. *Oikos*, 69: 373–386.

- Jouquet, P., Bottinelli, N., Podwojewski, P., Hallaire, V., & Tran, T. D. (2008). Chemical and physical properties of earthworm casts as compared to bulk soil under a range of different land-use systems in Vietnam. *Geoderma*, 146: 231–238.
- Kabera, J. N., Semana, E., Mussa, A. R., & He, X. (2014). Plant secondary metabolites: biosynthesis, classification, function and pharmacological properties. *Journal of Pharmacy and Pharmacology*, 2: 377–392.
- Kale, R. D., & Karmegam, N. (2010). The Role of Earthworms in Tropics with Emphasis on Indian Ecosystems. *Applied and Environmental Soil Science*, 2010: 1–16.
- Kamo, T., Hirai, N., Tsuda, M., Fujioka, D., & Ohigashi, H. (2000). Changes in the content and biosynthesis of phytoalexins in banana fruit. *Bioscience, Biotechnology and Biochemistry*, 64(10): 2089–2098.
- Kim, H. K., Choi, Y. H., & Verpoorte, R. (2010). NMR-based metabolomic analysis of plants. *Nature Protocols*, 5(3): 536–549.
- Kim, H. K., Choi, Y. H., & Verpoorte, R. (2011). NMR-based plant metabolomics: where do we stand, where do we go? *Trends in Biotechnology*, 29(6): 267–275.
- Kim, J. K., Park, S.-Y., Lim, S.-H., Yeo, Y., Cho, H. S., & Ha, S.-H. (2013). Comparative metabolic profiling of pigmented rice (*Oryza sativa* L.) cultivars reveals primary metabolites are correlated with secondary metabolites. *Journal of Cereal Science*, 57(1): 14–20.
- Kogeethavani, R., Sulastri, N. J., Mazanah, M., Rozieta, L., & Mohamad, R. M.N. (2013). *First report of blood disease bacterium on banana in Malaysia*. Malaysian Agricultural Research and Development Institute.
- Kosuge, T. (1969). The role of phenolics in host response to infection. *Annual Review of Phytopathology*, 7(1): 195–222.
- Krishnan, P., Kruger, N. J., & Ratcliffe, R. G. (2004). Metabolite fingerprinting and profiling in plants using NMR. *Journal of Experimental Botany*, 56(410): 255–265.
- Kusumoto, S., Aeny, T. N., Mujimu, S., Ginting, C., Tsuge, T., Tsuyumu, S., & Takikawa, Y. (2004). Occurrence of blood disease of banana in Sumatra, Indonesia. *Journal of General Plant Pathology*, 70(1): 45–49.
- Lafont, A., Risède, J.-M., Loranger-Merciris, G., Clermont-Dauphin, C., Dorel, M., Rhino, B., & Lavelle, P. (2007). Effects of the earthworm *Pontoscolex corethrurus* on banana plants infected or not with the plant-parasitic nematode *Radopholus similis*. *Pedobiologia*, 51(4): 311–318.
- Lassègues, M., Roch, P., & Valembois, P. (1989). Antibacterial activity of *Eisenia fetida andrei* coelomic fluid: evidence, induction and animal protection. *Journal of Invertebrate Pathology*, 53: 1–6.
- Lattanzio, V. (2013). Phenolic compounds: introduction. In K. G. Ramawat & J.-M. Mérillon (Eds.), *Natural Products* (pp. 1543–1580). Berlin, Heidelberg: Springer Berlin Heidelberg.

- Lavelle, P., Barros, E., Blanchart, E., Brown, G., Desjardins, T., Mariani, L., & Rossi, J.-P. (2001). SOM management in the tropics: Why feeding the soil macrofauna? *Nutrient Cycling in Agroecosystems*, 61(1-2): 53–61.
- Lavelle, P., Lattaud, C., Trigo, D., & Barois, I. (1995). Mutualism and biodiversity in soils. *Plant and Soil*, 170: 23–33.
- Le Couteulx, A., Wolf, C., Hallaire, V., & Pérès, G. (2015). Burrowing and casting activities of three endogeic earthworm species affected by organic matter location. *Pedobiologia*, 58(2-3): 97-103.
- Lee, S. W. (2003). *Micropropagation of Cavendish banana in Taiwan*. Taiwan Banana Research Institute.
- Leiss, K. A., Choi, Y. H., Verpoorte, R., & Klinkhamer, P. G. L. (2011). An overview of NMR-based metabolomics to identify secondary plant compounds involved in host plant resistance. *Phytochemistry Reviews*, 10(2): 205–216.
- Li, W., Wang, C., & Sun, Z. (2011). Vermipharmaceuticals and active proteins isolated from earthworms. *Pedobiologia*, 54S: 49–56.
- Li, Z., Tang, T., Liang, S., Ning, X., Bai, M., & Wu, H. (2012). The synthesis and storage sites of phenolic compounds in the root and rhizome of *Echinacea purpurea*. *American Journal of Plant Sciences*, 3(4): 551–558.
- Lohmann, M., Scheu, S., & Müller, C. (2009). Decomposers and root feeders interactively affect plant defence in *Sinapis alba*. *Oecologia*, 160(2): 289–298.
- Loranger-Merciris, G., Cabidoche, Y.-M., Deloné, B., Quénehervé, P., & Ozier-Lafontaine, H. (2012). How earthworm activities affect banana plant response to nematodes parasitism. *Applied Soil Ecology*, 52: 1–8.
- Mahrous, E. A., & Farag, M. A. (2015). Two dimensional NMR spectroscopic approaches for exploring plant metabolome: a review. *Journal of Advanced Research*, 6(1): 3–15.
- Mak, C., Mohamed, A. A., Liew, K. H., & Ho, Y. W. (2004). Early screening technique for Fusarium wilt resistance in banana micropropagated plants. *Banana Improvement*, 18: 219–227.
- Mazid, M., Khan, T. A., & Mohammad, F. (2011). Roles of secondary metabolites in defense mechanisms of plants. *Biology and Medicine*, 3(2): 232–249.
- McNiel, S. D., Nuccio, M. L., Ziemak, M. J., & Hanson, A. D. (2001). Enhanced synthesis of choline and glycine betaine in transgenic tobacco plants that overexpress phosphoethanolamine N-methyltransferase. *PNAS*, 98(17): 10001–10005.
- Meghvansi, M. K., Singh, L., Srivastava, R. B., & Varma, A. (2011). Assessing the Role of Earthworms in Biocontrol of Soil-Borne Plant Fungal Disease. In A. Karaca (Ed.), *Biology of Earthworm* (vol. 24, pp. 173–190). New York: Springer-Verlag Berlin Heidelberg.
- Messiha, N. A. S., van Diepeningen, A. D., Wenneker, M., van Beuningen, A. R., Janse, J. D., Coenen, T. G. C., Termorshuizen, A. J., van Bruggen, A. H. C., & Blok, W. J. (2007). Biological Soil Disinfestation (BSD), a new control

- method for potato brown rot, caused by *Ralstonia solanacearum* race 3 biovar 2. *European Journal of Plant Pathology*, 117(4): 403–415.
- Moco, S., & Vervoort, J. (2012). Chemical identification strategies using liquid chromatography-photodiode array-solid-phase extraction-nuclear magnetic resonance/ mass spectrometry. In N. W. Hardy & R. D. Hall (Eds.), *Plant Metabolomics: Methods and Protocols* (pp. 287–316). New York: Humana Press : Springer.
- Morrissey, J. P. (2009). Biological activity of defence-related plant secondary metabolites. In A. E. Osbourn & V. Lanzotti (Eds.), *Plant-derived Natural Products* (pp. 283–299). New York, NY: Springer US.
- Muthoni, J., Shimelis, H., & Melis, R. (2012). Management of bacterial wilt [*Ralstonia solanacearum* Yabuuchi et al., 1995] of potatoes: opportunity for host resistance in Kenya. *Journal of Agricultural Science*, 4(9).
- Narayanasamy, P. (2013). Abiotic biological control agents for crop disease management. In P. Narayanasamy, *Biological Management of Diseases of Crops* (pp. 511–632). Dordrecht: Springer Netherlands.
- Nguyen, Q.-T., Merlo, M. E., Medema, M. H., Jankevics, A., Breitling, R., & Takano, E. (2012). Metabolomics methods for the synthetic biology of secondary metabolism.pdf. *FEBS Letters*, 586: 2177–2183.
- Nicholson, R. L., & Hammerschmidt, R. (1992). Phenolic compounds and their role in disease resistance. *Annual Review of Phytopathology*, 30(1): 369–389.
- Nik Hassan, N. M. M. (2003). Banana R&D in Malaysia: updates and highlights. In *Advancing banana and plantain R&D in Asia and the Pacific* (pp. 75). Los Baños, Philippines: INIBAP.
- Obata, T., & Fernie, A. R. (2012). The use of metabolomics to dissect plant responses to abiotic stresses. *Cellular and Molecular Life Sciences*, 69(19): 3225–3243.
- Oleynik, A. S., & Byzov, B. A. (2008). Response of bacteria to earthworm surface excreta. *Microbiology*, 77(6): 765–773.
- Opina, N., Tavner, F., Hollway, G., Wang, J.-F., Li, T.-H., Maghirang, R., Fegan, M., Hayward, A. C., Krishnapillai, V., Hong, W. F., Holloway, B. W., & Timmis, J. N. (1997). A novel method for development of species and strain-specific DNA probes and PCR primers for identifying *Burkholderia solanacearum* (formerly *Pseudomonas solanacearum*). *Asia Pacific Journal of Molecular Biology and Biotechnology*, 51: 19–30.
- Otálvaro, F., Nanclares, J., Vásquez, L. E., Quiñones, W., Echeverri, F., Arango, R., & Schneider, B. (2007). Phenalenone-type compounds from *Musa acuminata* var. “Yangambi km 5” (AAA) and their activity against *Mycosphaerella fijiensis*. *Journal of Natural Products*, 70(5): 887–890.
- Petkovšek, M. M., Stampar, F., & Veberic, R. (2008). Increased phenolic content in apple leaves infected with the apple scab pathogen. *Journal of Plant Pathology*, 90(1): 49–55.
- Pillay, M., & Tripathi, L. (2008). Banana Breeding. In M. S. Kang & P. M. Priyadarshan (Eds.), *Breeding Major Food Staples* (pp. 393–428). Blackwell Publishing Ltd.

- Plant Health Australia. (2006). *Bacterial wilt of banana diagnostics manual* (p. 61). Australia.
- Rangarajan, S., Saleena, L. M., Vasudevan, P., & Nair, S. (2003). Biological suppression of rice diseases by *Pseudomonas* spp. under saline soil conditions. *Plant and Soil*, 251(1): 73–82.
- Remenant, B., de Cambiaire, J.-C., Cellier, G., Jacobs, J. M., Mangenot, S., Barbe, V., Lajus, A., Vallenet, D., Medigue, C., Fegan, M., Allen, C., & Prior, P. (2011). *Ralstonia syzygii*, the Blood Disease Bacterium and some Asian *R. solanacearum* strains form a single genomic species despite divergent lifestyles. *PLoS ONE*, 6(9): 1–10.
- Rezk, M. A., Ibrahim, I. K. A., & Ibrahim, A. A. M. (1987). Effect of root-knot nematodes on the phenolic contents of barley and wheat. *Nematologia Mediterranea*, 15: 259–263.
- Rocha, M., Licausi, F., Araújo, W. L., Nunes-Nesi, A., Sodek, L., Fernie, A. R., & van Dongen, J. T. (2010). Glycolysis and the tricarboxylic acid cycle are linked by alanine aminotransferase during hypoxia induced by waterlogging of *Lotus japonicus*. *Plant Physiology*, 152(3): 1501–1513.
- Roessner, U. (2007). Uncovering the plant metabolome: current and future challenges. In B. J. Nikolau & E. S. Wurtele (Eds.), *Concepts in Plant Metabolomics* (pp. 71–85). Dordrecht, The Netherlands: Springer.
- Rojas, C. M., Senthil-Kumar, M., Tzin, V., & Mysore, K. S. (2014). Regulation of primary plant metabolism during plant-pathogen interactions and its contribution to plant defense. *Frontiers in Plant Science*, 5: 1–12.
- Römbke, J., Jänsch, S., & Didden, W. (2005). The use of earthworms in ecological soil classification and assessment concepts. *Ecotoxicology and Environmental Safety*, 62(2): 249–265.
- Ruzin, S. E. (1999). *Plant Microtechnique and Microscopy*. New York: Oxford University Press.
- Salunke, B. K., Prakash, K., Vishwakarma, K. S., & Maheshwari, V. L. (2009). Plant metabolites: an alternative and sustainable approach towards post harvest pest management in pulses. *Physiology and Molecular Biology of Plants*, 15(3): 185–197.
- Sangwan, N. S., Tiwari, P., Mishra, S. K., Yadav, R. K., Tripathi, S., Kushwaha, A. K., & Sangwan, R. S. (2015). Plant Metabolomics: an overview of technology platforms for applications in metabolism. In D. Barh, M. S. Khan, & E. Davies (Eds.), *PlantOmics: The Omics of Plant Science* (pp. 257–298). New Delhi: Springer India.
- Schauer, N., & Fernie, A. (2006). Plant metabolomics: towards biological function and mechanism. *Trends in Plant Science*, 11(10): 508–516.
- Scheu, S. (2003). Effects of earthworms on plant growth: patterns and perspectives. *Pedobiologia*, 47: 846–856.
- Schrader, S., Rogasik, H., Onasch, I., & Jégou, D. (2007). Assessment of soil structural differentiation around earthworm burrows by means of X-ray computed tomography and scanning electron microscopy. *Geoderma*, 137(3-4): 378–387.

- Schripsema, J. (2010). Application of NMR in plant metabolomics: techniques, problems and prospects. *Phytochemical Analysis*, 21(1): 14–21.
- Seigler, D. S. (1998a). Nonprotein amino acids. In D. S. Seigler (Ed.), *Plant Secondary Metabolism* (pp. 215–223). USA: Kluwer Academic Publishers.
- Seigler, D. S. (1998b). *Plant Secondary Metabolism*. New York: Kluwer Academic.
- Senapati, B. K., Lavelle, P., Giri, S., Pashanasi, B., Alegre, J., Decaëns, T., Jimenez, J. J., Albrecht, A., Blanchart, E., Mahieux, M., Rousseaux, L., Thomas, R., Panigrahi, P. K., & Venkatachalam, M. (1999). In-soil earthworm technology for tropical ecosystems. In P. Lavelle, L. Brussaard, & P. Hendrix (Eds.), *Earthworm management in tropical agroecosystems* (pp. 199–237). London, UK: CABI Publishing.
- Sequeira, L. (1998a). Bacterial wilt: the missing element in international banana improvement programs. In P. Prior, C. Allen, & J. Elphinstone (Eds.), *Bacterial Wilt Disease* (pp. 6–14). Springer Berlin Heidelberg.
- Sequeira, L. (1998b). Bacterial wilt: the missing element in international efforts for banana improvement. In P. Prior, C. Allen, & J. Elphinstone (Eds.), *Bacterial Wilt Diseases* (pp. 6–14). Paris: Springer Berlin Heidelberg.
- Sharrock, S., & Frison, E. (1998). Musa production around the world-trends, varieties and regional importance. *INIBAP Annual Report*, 42–47.
- Shiryaeva, L., Antti, H., Schröder, W. P., Strimbeck, R., & Shiriaev, A. S. (2012). Pair-wise multicomparison and OPLS analyses of cold-acclimation phases in Siberian spruce. *Metabolomics*, 8(S1): 123–130.
- Silvestre, A. J., & Gandini, A. (2008). Terpenes: major sources, properties and applications. In M. N. Belgacem & A. Gandini (Eds.), *Monomers, Polymers and Composites from Renewable Resources* (Vol. 1, pp. 17–38).
- Sim, K., Cox, M. J., Wopereis, H., Martin, R., Knol, J., Li, M.-S., Cookson, W. O. C. M., Moffatt, M. F., & Kroll, J. S. (2012). Improved detection of bifidobacteria with optimised 16S rRNA-gene based pyrosequencing. *PLoS ONE*, 7(3): e32543.
- Singh, B., & Sharma, R. A. (2015). Plant terpenes: defense responses, phylogenetic analysis, regulation and clinical applications. *3 Biotech*, 5(2): 129–151.
- Sizmur, T., Palumbo-Roe, B., & E Hodson, M. (2010). Why does earthworm mucus decrease metal mobility? *Integrated Environmental Assessment and Management*, 6: 777–785.
- Springob, K., & Kutchan, T. M. (2009). Introduction to the Different Classes of Natural Products. In A. E. Osbourn & V. Lanzotti (Eds.), *Plant-derived Natural Products* (pp. 3–50). New York, NY: Springer US.
- Srinivasamurthy, R., Pratibha Singh, J., & Rai, A. K. (2014). Biological control of bacterial wilt disease-causing pathogens: a sustainable approach for increasing crop production. In R. N. Kharwar, R. S. Upadhyay, N. K. Dubey, & R. Raghuwanshi (Eds.), *Microbial Diversity and Biotechnology in Food Security* (pp. 383–397). New Delhi: Springer India.

- Stefani, E., Giosuè, S., & Mazzucchi, U. (2005). Detection of latent infections of *Ralstonia solanacearum* Biovar 2, race 3 in tomato crops. *Journal of Plant Pathology*, 87(3): 167–171.
- Stephens, P. M., Davoren, C. W., Doube, B. M., Ryder, M. H., Bengner, A. M., & Neate, S. M. (1993). Reduced severity of *Rhizoctonia solani* disease on wheat seedlings associated with the presence of the earthworm *Aporrectodea trapezoides* (Lumbricidae). *Soil Biology and Biochemistry*, 25(11): 1477–1484.
- Subashri, R., Raman, G., & Sakthivel, N. (2013). Biological control of pathogens and plant growth promotion potential of fluorescent *Pseudomonads*. In D. K. Maheshwari (Ed.), *Bacteria in Agrobiolgy: Disease Management* (pp. 77–110). Berlin, Heidelberg: Springer Berlin Heidelberg.
- Sumner, L. W., Mendes, P., & Dixon, R. A. (2003). Plant metabolomics: large-scale phytochemistry in the functional genomics era. *Phytochemistry*, 62(6): 817–836.
- Sundari, S. K. (2014). Impact of biotic, abiotic stressors: biotechnologies for alleviating plant stress. In M. Miransari (Ed.), *Use of Microbes for the Alleviation of Soil Stresses* (pp. 87–120). New York: Springer New York.
- Supriadi. (2005). Present status of blood disease in Indonesia. In A. Caitilyn, P. Philippe, & H. A.C. (Eds.), *Bacterial Wilt Disease and the Ralstonia solanacearum species complex*. Minnesota: APS Press.
- Swanson, J. K., Montes, L., Mejia, L., & Allen, C. (2007). Detection of latent infections of *Ralstonia solanacearum* Race 3 Biovar 2 in Geranium. *Plant Disease*, 91(7): 828–834.
- Taghavi, M., Hayward, C., Syl, L., & Fegan, M. (1996). Analysis if the phylogenetic relationships of strains of *Burkholderia solanacearum*, *Pseudomonas syzygii*, and the blood disease bacterium of banana based on 16S rRNA gene sequences. *International Journal of Systematic Bacteriology*, 46(1): 10–15.
- Tahat, M. M., & Sijam, K. (2010). *Ralstoina solanacearum*: the bacterial wilt causal agent. *Asian Journal of Plant Sciences*, 9(7): 385–393.
- Talapatra, S. K., & Talapatra, B. (2015). Introduction: Enzymes. Cofactors/Coenzymes. Primary and Secondary Metabolites. Natural Products and their Functions. Plant Chemical Ecology. Biosynthesis. Metabolic Pathways. In S. K. Talapatra & B. Talapatra, *Chemistry of Plant Natural Products* (pp. 1–22). Berlin, Heidelberg: Springer Berlin Heidelberg.
- Tengku Ab Malik, T. M., Maimun, T., Rozeita, L., & Umi Kalsum, B. (2010). Malaysia. In A. B. Molina, B. P. Joven, V. G. Sinohin, & J. D. Generoso (Eds.), *Proceedings of the 7th BAPNET Steering Committee Meeting* (pp. 139–150). Hanoi, Vietnam: Biodiversity International.
- Tengku Ab Malik, T. M., Mohamad Roff, M. N., Rozeita, L., & Maimun, T. (2012). Bacterial wilt builds up in Malaysia. *Bapnet Bulletin*, 17(1): 1–2.
- Thakker, J. N., Patel, S., & Dhandhukia, P. C. (2013). Induction of defense-related enzymes in banana plants: ffect of live and dead pathogenic strain of *Fusarium oxysporum* f. sp. *cubense*. *ISRN Biotechnology*, 2013: 1–6.

- Thwaites, R., Eden-Green, S. J., & Black, R. (2000). Diseases caused by bacteria. In D. Jones (Ed.), *Diseases of Banana, Abaca and Enset* (pp. 213–239). Wallingford, United Kingdom: CABI Publishing.
- Tiwari, S. C., Tiwari, B. K., & Mishra, R. R. (1989). Microbial populations, enzyme activities and nitrogen-phosphorus-potassium enrichment in earthworm casts and in the surrounding soil of a pineapple plantation. *Biology and Fertility of Soils*, 8: 178–182.
- Topoliantz, S., Ponge, J. F., Arrouays, D., Ballof, S., & Lavelle, P. (2002). Effect of organic manure and the endogeic earthworm *Pontoscolex corethrurus* (Oligochaeta : Glossoscolecidae) on soil fertility and bean production. *Biology and Fertility of Soils*, 36: 313–319.
- Valette, C., Andary, C., Geiger, J. P., Sarah, J. L., & Nicole, M. (1998). Histochemical and cytochemical investigation of phenols in roots of banana infected by the burrowing nematode *Radopholus similis*. *Nematology*, 88(11): 1141–1148.
- Vermerris, W., & Nicholson, R. (2006). *Phenolic compound biochemistry*. Dordrecht: Springer.
- Villa, J., Tsuchiya, K., Horita, M., Natural, M., Opina, N., & Hyakumachi, M. (2003). DNA analysis of *Ralstonia solanacearum* and related bacteria based on 282-bp PCR-amplified fragment. *Plant Disease*, (87): 1337–1343.
- Vince, Ö., & Zoltán, M. (2011). *Plant Physiology*. Hungary: Debreceni Egyetem, Nyugat-Magyarországi Egyetem, Pannon Egyetem.
- Vranova, V., Rejsek, K., Skene, K. R., & Formanek, P. (2011). Non-protein amino acids: plant, soil and ecosystem interactions. *Plant and Soil*, 342(1-2): 31–48.
- Wang, K.-H., & Uchida, J. (2014). Plant disease prevention and management in sustainable agricultural systems. In D. Nandwani (Ed.), *Sustainable Horticultural Systems* (vol. 2, pp. 353–384). Switzerland: Springer International Publishing.
- Ward, J. L., Baker, J. M., & Beale, M. H. (2007). Recent applications of NMR spectroscopy in plant metabolomics: NMR spectroscopy in plant metabolomics. *FEBS Journal*, 274(5): 1126–1131.
- Wink, M. (1988). Plant breeding: importance of plant secondary metabolites for protection against pathogens and herbivores. *Theoretical and Applied Genetics*, 75(2): 225–233.
- Wishart, D. S. (2008). Quantitative metabolomics using NMR. *Trends in Analytical Chemistry*, 27(3): 228–237.
- Wurst, S. (2010). Effects of earthworms on above- and belowground herbivores. *Applied Soil Ecology*, 45: 123–130.
- Wurst, S. (2013). Plant-mediated links between detritivores and aboveground herbivores. *Frontiers in Plant Science*, 4.
- Wurst, S., Dugassa-Gobena, D., & Scheu, S. (2004). Earthworms and litter distribution affect plant-defensive chemistry. *Journal of Chemical Ecology*, 30: 691–701.
- Wurst, S., & Jones, T. H. (2003). Indirect effects of earthworms (*Aporrectodea caliginosa*) on an above-ground tritrophic interaction. *Pedobiologia*, 47: 91–97.

- Wurst, S., Wagenaar, R., Biere, A., & Putten, W. H. (2009). Microorganisms and nematodes increase levels of secondary metabolites in roots and root exudates of *Plantago lanceolata*. *Plant and Soil*, 329(1-2): 117–126.
- Wuyts, N. (2006). *Interactions between plant parasitic nematodes and plant secondary metabolism with emphasis on phenylpropanoids in roots*. (PhD). Katholieke Universiteit Leuven, Belgium.
- Wuyts, N., Lognay, G., Sági, L., De Waele, D., & Swennen, R. (2005). Secondary metabolites in roots and implications for nematode resistance in banana (*Musa* spp.). In D. W. Turner & F. E. Rosales (Eds.), *Banana Root System: towards a better understanding for its productive management* (pp. 238–246). Costa Rica.
- Wuyts, N., Lognay, G., Verscheure, M., Marlier, M., De Waele, D., & Swennen, R. (2007). Potential physical and chemical barriers to infection by the burrowing nematode *Radopholus similis* in roots of susceptible and resistant banana (*Musa* spp.). *Plant Pathology*, 56(5): 878–890.
- Yazdani, D., Tan, Y. H., Zainal Abidin, M. A., & Jaganath, I. B. (2011). A review on bioactive compounds isolated from plants against plant pathogenic fungi. *Journal of Medicinal Plants Research*, 5(30): 6584–6589.
- You, Q., Wang, B., Chen, F., Huang, Z., Wang, X., & Luo, P. G. (2011). Comparison of anthocyanins and phenolics in organically and conventionally grown blueberries in selected cultivars. *Food Chemistry*, 125(1): 201–208.
- Yuliar, Nion, Y. A., & Toyota, K. (2015). Recent trends in control methods for bacterial wilt diseases caused by *Ralstonia solanacearum*. *Microbes and Environment*, 30(1): 1-11.
- Zhang, Q., Zhang, J., Shen, J., Silva, A., Dennis, D. A., & Barrow, C. J. (2006). A simple 96-well microplate method for estimation of total polyphenol content in seaweeds. *Journal of Applied Phycology*, 18(3-5): 445–450.
- Zhang, S., Hu, F., Li, H., & Li, X. (2009). Influence of earthworm mucus and amino acids on tomato seedling growth and cadmium accumulation. *Environmental Pollution*, 157: 2737–2742.
- Zhang, S., Tang, C., Li, H., Wei, Z., & Hu, F. (2010). Earthworm mucus enhanced cadmium accumulation of tomato seedlings. *International Journal of Phytoremediation*, 12: 24–33.
- Zulperi, D., & Sijam, K. (2014). First report of *Ralstonia solanacearum* Race 2 Biovar 1 causing Moko disease of banana in Malaysia. *Plant Disease*, 98: 275.
- Zwenger, S., & Basu, C. (2008). Plant terpenoids: applications and potentials. *Biotechnology and Molecular Biology Reviews*, 3(1): 1–7.