



UNIVERSITI PUTRA MALAYSIA

***POTENTIAL OF HARNESSING INCIDENT SOLAR ENERGY IN
BUILDING SHADING DEVICE FOR THERMAL APPLICATION***

NG KHAI MUN

FK 2018 2



**POTENTIAL OF HARNESSING INCIDENT SOLAR ENERGY IN
BUILDING SHADING DEVICE FOR THERMAL APPLICATION**

By

NG KHAI MUN

**Thesis Submitted to the School of Graduate Studies, Universiti Putra Malaysia,
in Fulfilment of the Requirements for the Degree of Doctor of Philosophy**

February 2018

All material contained within the thesis, including without limitation text, logos, icons, photographs and all other artwork, is copyright material of Universiti Putra Malaysia unless otherwise stated. Use may be made of any material contained within the thesis for non-commercial purposes from the copyright holder. Commercial use of material may only be made with the express, prior, written permission of Universiti Putra Malaysia.

Copyright © Universiti Putra Malaysia



Abstract of thesis presented to the Senate of Universiti Putra Malaysia in fulfilment
of the requirement for the degree of Doctor of Philosophy

**POTENTIAL OF HARNESSING INCIDENT SOLAR ENERGY IN
BUILDING SHADING DEVICE FOR THERMAL APPLICATION**

By

NG KHAI MUN

February 2018

Chair: Nor Mariah Adam, PhD, P Eng
Faculty: Engineering

The recent trend of integrating a solar energy system in building has become a sustainable solution for energy conservation. This work proposed an alternative philosophy of solar absorber system, which is harnessing the incident solar energy on the building shading device. The existing literature mainly discussed the performance of shading devices in term of expelling solar incident ray, excluding the potential of energy collection. There is limited investigation on the energy harnessing through shading device under the tropical skies. Besides, most of the building integrated solar thermal models were developed and studied in higher latitude regions. The overall objective of this work is to develop a shading façade-integrated solar absorber system model and assess its performance under the hot tropical climate. Mathematical considerations of solar radiation model, shading façade-integrated solar absorber geometrical model and solar absorber model were resolved holistically in a segregated manner using MATLAB programming environment. The orientation, geometrical and thermal characteristics of the system model were analysed and assessed to configure the system model optimally. Numerical results showed that the optimum tilt angle of the shading façade-integrated solar absorber for maximum solar radiation interception was approximately 15° . According to the geometrical and thermal performance analyses, the configuration of two solar plates system with the dimensions of plate-to-cover spacing of 10 mm, plate thickness to width ratio of 0.15 and tube centre-to-centre distance of 8.2 cm was the optimum option. It has resulted in the maximum effective area of exposure to solar ray, minimum overall heat loss coefficient and optimum heat removal factor valued at 98.9%, $8.5951 \text{ W}/(\text{m}^2\text{K})$ and 0.898, respectively. A prototype of the complete system model was fabricated according to the outcomes of the numerical simulations. To confirm its performance, outdoor experiments were conducted in daytime for 139 days under the actual tropical sky. The outdoor field test has demonstrated that the system model was principally dependent on the available global irradiance and its performance was impaired by the high occurrence of afternoon rain. On average, the system model was capable to achieve the daily system efficiency of 50.5%, maximum daily water

temperature attained at 48.9 °C and solar water heating rate of 2.9 °C/hr. Findings showed that the system model could perform most frequently at the daily system efficiency ranging from 45% to 60% and the maximum daily water temperature attained from 45 °C to 57 °C during the test period. Under the stagnant condition, the measured maximum temperatures of glass surface and absorber plate surfaces were 74.3 °C and 102.9 °C, respectively. Verification of results for the simulation and experimental data measurement were conducted; and they were in agreement.



Abstrak tesis yang dikemukakan kepada Senat Universiti Putra Malaysia
sebagai memenuhi keperluan untuk ijazah Doktor Falsafah

**POTENSI PENGUMPULAN TENAGA SURIA TUJU DARIPADA PERANTI
TEDUHAN BANGUNAN UNTUK APLIKASI HABA**

Oleh

NG KHAI MUN

Februari 2018

Pengerusi: Nor Mariah Adam, PhD, P Eng
Faculti: Kejuruteraan

Tren kebelakangan ini yang menyepadukan sistem tenaga suria pada bangunan telah menjadi satu penyelesaian yang mampan untuk pengabdian tenaga. Kajian ini mencadangkan satu falsafah alternatif sistem pengumpul suria untuk mengumpul tenaga suria tuju daripada peranti teduhan bangunan. Kajian literatur yang sedia ada kebanyakannya membincangkan prestasi peranti teduhan dari segi pemantulan sinaran suria yang tidak mengambil kira potensi untuk pengumpulan tenaga. Literatur kawasan berkaitan tropika adalah sangat kurang walaupun potensinya yang menarik. Objektif keseluruhan kerja ini adalah untuk membangunkan satu model sistem pengumpul suria bersepadu teduhan di kawasan tropika dan menilai prestasinya. Pertimbangan matematik atas model radiasi suria, model geometri pengumpul suria bersepadu teduhan dan model pengumpul suria telah diselesaikan secara menyeluruh dengan cara yang berasingan menggunakan sekitaran pengaturcaraan MATLAB. Orientasi facade bangunan, ciri-ciri geometri dan termal bagi model sistem telah dianalisis dan hasilnya dinilai untuk mewujudkan model sistem secara optimum. Keputusan berangka menunjukkan bahawa sudut kecondongan optimum pengumpul suria bersepadu teduhan untuk maksimum pemintasan radiasi suria adalah hampir 15° . Menurut analisis prestasi geometri dan haba, konfigurasi sistem dua plat suria dengan dimensi yang berukuran jarak 10 mm di antara plat dan penutup, 0.15 nisbah ketebalan plat kepada lebar plat dan jarak 8.2 cm di antara tiub-tiub adalah pilihan optimum. Ia telah menghasilkan keberkesanan luas pendedahan kepada sinar suria yang maksimum, pekali kehilangan haba keseluruhan yang minimum dan faktor penyingkiran haba yang optimum, dengan masing-masing bernilai 98.9%, 8.5951 W/(m²K) dan 0.898. Satu prototaip model sistem yang lengkap telah dibina mengikut hasil simulasi berangka. Untuk mengesahkan prestasinya, eksperimen telah dijalankan pada siang hari selama 139 hari di bawah langit tropika. Hasil eksperimen menunjukkan bahawa model sistem pada dasarnya adalah bergantung kepada sinaran global yang tersedia dan prestasinya telah terjejas oleh kekerapan hujan yang tinggi pada sebelah petang. Secara purata, model sistem ini mampu mencapai kecekapan sistem harian pada

50.5%, suhu air maksima pada 48.9 °C dan kadar pemanasan air pada 2.9 °C/jam. Penemuan kajian menunjukkan bahawa model sistem itu dapat menunjukkan prestasi dengan kecekapan sistem harian daripada 45% hingga 60% dan suhu air harian maksima daripada 45 °C hingga 57 °C dengan kekerapan yang tertinggi dalam tempoh ujian. Di bawah keadaan mantap, suhu maksima yang diukur pada permukaan kaca dan permukaan plat penyerap adalah masing-masing 74.3 °C dan 102.9 °C. Pengesahan keputusan simulasi dan pengukuran data eksperimen telah dijalankan. Model simulasi pada dasarnya adalah bersamaan dengan eksperimen.



ACKNOWLEDGEMENTS

It is a pleasure to express my gratitude to the many individuals who have helped me in the preparation and completion of this thesis. First and foremost, I would like to express my heartiest thanks to my supervisor, Professor Ir. Dr. Nor Mariah Adam, for her invaluable advice, encouragement, guidance, endless support and patience, throughout the research. I am grateful to work under her supervision. With her wonderful personality, I learned on how to conduct the research systematically and innovatively to achieve the goal with great quality. Similar appreciations must go to my supervisory committee members, Professor Ir. Dr. Mohd Zainal Abidin Ab. Kadir and Dr. Othman Inayatullah, for their warm encouragement, constant guidance and suggestion. Their patient advice and beneficial discussion have greatly helped me during this study.

I would like to extend my appreciation to the staff of Department of Mechanical and Manufacturing Engineering, for their help in providing the testing equipments for this work, in particular, Mr Haffiz Ab Jalil and Mrs Nor Mahayon. I would also wish to thank Mr Koh Chu Eyam from the Infrastructure University Kuala Lumpur, for the helpful technical discussion. A special thanks goes to Ms Thiah Siew Ling for her kindness in offering assistance to facilitate the fieldwork.

Last but not least, I would like to thank my beloved family for their continuous support and care throughout all my studies, and without whose encouragement I could not have been able to come this far.

I certify that a Thesis Examination Committee has met on 6 February 2018 to conduct the final examination of Ng Khai Mun on his thesis entitled "Potential of Harnessing Incident Solar Energy in Building Shading Device for Thermal Application" in accordance with the Universities and University Colleges Act 1971 and the Constitution of the Universiti Putra Malaysia [P.U.(A) 106] 15 March 1998. The Committee recommends that the student be awarded the Doctor of Philosophy.

Members of the Thesis Examination Committee were as follows:

Zulkiflle bin Leman, PhD

Associate Professor
Faculty of Engineering
Universiti Putra Malaysia
(Chairman)

Mohd Amran bin Mohd Radzi, PhD

Associate Professor
Faculty of Engineering
Universiti Putra Malaysia
(Internal Examiner)

Nuraini binti Abdul Aziz, PhD

Associate Professor
Faculty of Engineering
Universiti Putra Malaysia
(Internal Examiner)

Hakan Fehmi, PhD

Professor
Firat University
Turkey
(External Examiner)



NOR AINI AB. SHUKOR, PhD

Professor and Deputy Dean
School of Graduate Studies
Universiti Putra Malaysia

Date: 26 April 2018

This thesis was submitted to the Senate of Universiti Putra Malaysia and has been accepted as fulfilment of the requirement for the degree of Doctor of Philosophy. The members of the Supervisory Committee were as follows:

Nor Mariah Adam, PhD

Professor, Ir.
Faculty of Engineering
Universiti Putra Malaysia
(Chairman)

Mohd Zainal Abidin Ab. Kadir, PhD

Professor, Ir.
Faculty of Engineering
Universiti Putra Malaysia
(Member)

Othman Inayatullah, PhD

Senior Lecturer, Capt. (R)
Faculty of Engineering
Universiti Putra Malaysia
(Member)

ROBIAH BINTI YUNUS, PhD

Professor and Dean
School of Graduate Studies
Universiti Putra Malaysia

Date:

Declaration by graduate student

I hereby confirm that:

- this thesis is my original work;
- quotations, illustrations and citations have been duly referenced;
- this thesis has not been submitted previously or concurrently for any other degree at any other institutions;
- intellectual property from the thesis and copyright of thesis are fully-owned by Universiti Putra Malaysia, as according to the Universiti Putra Malaysia (Research) Rules 2012;
- written permission must be obtained from supervisor and the office of Deputy Vice-Chancellor (Research and Innovation) before thesis is published (in the form of written, printed or in electronic form) including books, journals, modules, proceedings, popular writings, seminar papers, manuscripts, posters, reports, lecture notes, learning modules or any other materials as stated in the Universiti Putra Malaysia (Research) Rules 2012;
- there is no plagiarism or data falsification/fabrication in the thesis, and scholarly integrity is upheld as according to the Universiti Putra Malaysia (Graduate Studies) Rules 2003 (Revision 2012-2013) and the Universiti Putra Malaysia (Research) Rules 2012. The thesis has undergone plagiarism detection software.

Signature: _____ Date: _____

Name and Matric No.: Ng Khai Mun , GS35666

Declaration by Members of Supervisory Committee

This is to confirm that:

- the research conducted and the writing of this thesis was under our supervision;
- supervision responsibilities as stated in the Universiti Putra Malaysia (Graduate Studies) Rules 2003 (Revision 2012-2013) are adhered to.

Signature: _____
Name of Chairman
of Supervisory
Committee: Nor Mariah Adam

Signature: _____
Name of Member of
Supervisory
Committee: Mohd Zainal Abidin Ab. Kadir

Signature: _____
Name of Member of
Supervisory
Committee: Othman Inayatullah

TABLE OF CONTENTS

| | Page |
|--|-------------|
| ABSTRACT | i |
| ABSTRAK | iii |
| ACKNOWLEDGEMENTS | v |
| APPROVAL | vi |
| DECLARATION | viii |
| LIST OF TABLES | xii |
| LIST OF FIGURES | xiv |
| LIST OF SYMBOLS | xx |
| | |
| CHAPTER | |
| 1 INTRODUCTION | 1 |
| 1.1 Background | 1 |
| 1.2 Problem Statement | 2 |
| 1.3 Objectives | 6 |
| 1.4 Scope and Limitation | 6 |
| 1.5 Significance of the Study | 8 |
| 1.6 Thesis Layout | 8 |
| 2 LITERATURE REVIEW | 9 |
| 2.1 Introduction | 9 |
| 2.2 Solar Radiation in Malaysia | 9 |
| 2.3 Solar Geometry | 11 |
| 2.4 Solar Irradiance on Building Orientation | 12 |
| 2.5 Orientation of Solar Absorber | 14 |
| 2.6 Building Integrated Solar Thermal Systems | 15 |
| 2.7 Shading Façade | 18 |
| 2.8 Solar Collectors | 20 |
| 2.8.1 Unglazed Solar Collector | 20 |
| 2.8.2 Glazed Solar Collector | 21 |
| 2.8.3 Concentrating Collector | 21 |
| 2.9 Solar Water Heating Methods | 23 |
| 2.10 Flow Arrangement of Solar Collector | 24 |
| 2.11 Performance Analysis of Solar Collector | 26 |
| 2.12 Computational Numerical Methods | 27 |
| 2.13 Closure | 28 |
| 3 THEORETICAL CONSIDERATIONS | 30 |
| 3.1 Introduction | 30 |
| 3.2 Framework of Overall Methodology | 30 |
| 3.3 Numerical Simulation Methodology | 33 |
| 3.4 Theoretical and Mathematical Model Development | 34 |
| 3.4.1 Development of Solar Radiation Model for Shading Façade-Integrated Solar Absorber | 34 |

| | | |
|----------|---|------------|
| | Surface Orientation | 34 |
| | 3.4.2 Development of Shading Façade-Integrated Solar Absorber Geometrical Model | 43 |
| | 3.4.3 Development of Solar Absorber Model | 51 |
| | 3.4.4 Algorithm Flows of System Modelling | 65 |
| 3.5 | Summary | 70 |
| 4 | MATERIALS AND METHODS | 71 |
| 4.1 | Introduction | 71 |
| 4.2 | Materials and Construction of Shading Façade-Integrated Solar Absorber System Model | 71 |
| | 4.2.1 Fabrication of Solar Absorber Unit | 72 |
| | 4.2.2 System Layout Configuration | 76 |
| | 4.2.3 System Control Mechanism and Components Set-up | 77 |
| | 4.2.4 On-site Installation | 79 |
| 4.3 | Measurement Instruments | 82 |
| | 4.3.1 Data Logger | 82 |
| | 4.3.2 Pyranometer | 83 |
| | 4.3.3 Thermocouple | 84 |
| | 4.3.4 Thermo Anemometer | 84 |
| | 4.3.5 Thermal Infrared Camera | 85 |
| | 4.3.6 Multimeter | 86 |
| | 4.3.7 Flow Meter | 86 |
| | 4.3.8 Portable GPS Navigator | 87 |
| 4.4 | Experimental Set-up and Procedures | 87 |
| 4.5 | Summary | 90 |
| 5 | RESULT AND DISCUSSION | 91 |
| 5.1 | Introduction | 91 |
| 5.2 | Numerical Model Analysis | 91 |
| | 5.2.1 Assessment of Solar Radiation on Diversely Oriented Surfaces | 91 |
| | 5.2.2 Optimum Tilt Angles | 99 |
| | 5.2.3 Geometric Characterisation | 102 |
| | 5.2.4 Thermal Performance Analysis | 110 |
| | 5.2.5 Technical Drawing | 122 |
| 5.3 | Experimental Model Analysis and Validation | 124 |
| 5.4 | Economic Aspect | 150 |
| 5.5 | Potential Application | 152 |
| 5.6 | Summary | 156 |
| 6 | CONCLUSION AND FUTURE WORK | 157 |
| 6.1 | Conclusion | 157 |
| 6.2 | Future Work | 158 |
| | REFERENCES | 159 |
| | APPENDICES | 178 |
| | BIODATA OF STUDENT | 254 |
| | LIST OF PUBLICATIONS | 255 |

LIST OF TABLES

| Table | | Page |
|-------|---|------|
| 2.1 | Types of solar thermal collectors | 20 |
| 2.2 | Typical control setting for pump by differential temperature set point between the solar collector and storage tank | 24 |
| 2.3 | Degree of linear correlation | 27 |
| 3.1 | Average days for months and values of <i>num</i> by months | 37 |
| 3.2 | Data for \bar{H} at Bandar Baru Bangi, latitude 3°N, longitude 103°E, elevation 60 m above mean sea level | 39 |
| 3.3 | Input values and boundaries in the simulation of solar radiation level on different orientations | 42 |
| 3.4 | Basic dimension of block plate model | 51 |
| 3.5 | Input parameters for numerical simulation of shading façade-integrated solar absorber system model | 70 |
| 4.1 | Raw materials and components required to construct the system model | 72 |
| 4.2 | Measured experiment location parameters | 80 |
| 5.1 | Optimum tilt angles of solar absorber | 100 |
| 5.2 | Normalised horizontal extension, d/S_h for different range of solar time and its corresponding horizontal extension dimensions for complete shading | 105 |
| 5.3 | Geometric characterisation of louvre plate arrangement for shading façade-integrated solar absorber system model | 109 |
| 5.4 | Thickness of solar plate, plate-to-cover spacing and back insulation thickness for different ratios of h/w_p and number of solar plate | 118 |
| 5.5 | Average percentage difference of heat removal factor for different ratio comparison | 119 |
| 5.6 | Summary of system optimal configuration of shading façade-integrated solar absorber system model | 121 |

| | | |
|-----|--|-----|
| 5.7 | Recommended empirical coefficients for linear regressions of Equations 5.5 and 5.6 | 143 |
| 5.8 | Standard size of main raw materials | 150 |
| 5.9 | Resource optimisation of main raw materials | 151 |



LIST OF FIGURES

| Figure | | Page |
|--------|--|------|
| 1.1 | Global irradiance on 25 March 2013 | 4 |
| 1.2 | Global irradiance on 26 March 2013 | 4 |
| 1.3 | Thermographic images of fenestration structures under the exposure of solar irradiance on 3 May 2013 | 5 |
| 1.4 | Thermographic images of shading devices under the exposure of solar irradiance on 3 May 2013 | 5 |
| 2.1 | Components of solar radiation on the earth surface | 10 |
| 2.2 | Schematic views of geometric explications of solar position | 12 |
| 2.3 | Common applications of external solar shading units | 19 |
| 2.4 | Six possible concentrating collector configurations | 22 |
| 2.5 | Schematic of passive and active solar water heating systems | 23 |
| 2.6 | Active solar water heating system for domestic hot water and space heating applications | 24 |
| 2.7 | Typical flow arrangements of flat plate solar absorbers | 25 |
| 2.8 | Solar collector arrays | 25 |
| 3.1 | Overall methodology framework of the research thesis | 31 |
| 3.2 | Orientation of a shading unit; (a) slope and (b) surface azimuth angle orientations | 38 |
| 3.3 | Illustration of seasonal shading façade orientations due south and north; (a) simple side view and (b) simple three-dimensional view | 43 |
| 3.4 | General configuration of a shading façade array-horizontal louvre system in horizontal configuration | 44 |
| 3.5 | (a) Illustration of profile angle, solar altitude angle and solar azimuth angle; (b) Side view of the shading integration solar absorber façade corresponding to the profile angle | 45 |
| 3.6 | Three possible placements of louvre plates | 47 |

| | | |
|------|---|----|
| 3.7 | Side view of horizontal louvre system with relevant geometrical dimensions for shading façade-integrated solar absorber | 48 |
| 3.8 | Holistic heat transfer mechanism for a basic shading façade-integrated solar absorber | 52 |
| 3.9 | Thermal network analogy of the solar absorber | 54 |
| 3.10 | Convection and radiation heat losses at the upper part of collector | 54 |
| 3.11 | Energy balance in two axes | 58 |
| 3.12 | Dimensions of tubes-plate configuration | 59 |
| 3.13 | Top view of the solar absorber | 61 |
| 3.14 | Parallel-flow configuration (reverse return array) of shading façade-integrated solar absorber system model | 64 |
| 3.15 | Algorithm flow of solar radiation model for shading façade-integrated solar absorber surface orientation | 66 |
| 3.16 | Algorithm flow of shading façade-integrated solar absorber geometrical modelling | 67 |
| 3.17 | Algorithm flow of overall heat loss modelling of shading façade-integrated solar absorber system model | 68 |
| 3.18 | Algorithm flow of thermal characterisation modelling of shading façade-integrated solar absorber system model | 69 |
| 4.1 | Joining of header, tubes and plate | 73 |
| 4.2 | Bottom view of solar absorber plate | 73 |
| 4.3 | Upper surface of solar absorber plate with flat black coating | 73 |
| 4.4 | Forming of housing of solar absorber set | 74 |
| 4.5 | Insulation material packed at the bottom and edge of solar absorber | 74 |
| 4.6 | Aluminium brackets and placement of solar absorber plate in housing | 75 |
| 4.7 | Complete assembly of solar absorber unit | 75 |
| 4.8 | Solar collector system controller, Model SR868C8 | 78 |

| | | |
|------|---|----|
| 4.9 | Display unit of controller | 78 |
| 4.10 | Experiment location map of shading façade-integrated solar absorber system | 79 |
| 4.11 | Actual site view of experiment location | 79 |
| 4.12 | Installation of supply line and exit line | 81 |
| 4.13 | Installation of insulation materials | 81 |
| 4.14 | Front and side views of assembled shading façade-integrated solar absorber system model | 82 |
| 4.15 | DataTaker DT80 | 83 |
| 4.16 | Black and white pyranometer, Eppley Radiometer Model 8-48 | 83 |
| 4.17 | Thermal anemometer model 9555 TSI VelociCalc | 85 |
| 4.18 | FLIR E50 thermal infrared camera | 85 |
| 4.19 | Multimeters | 86 |
| 4.20 | Flow meter with digital LCD display | 86 |
| 4.21 | Geko 201 navigator | 87 |
| 4.22 | Heavy duty extension wire and UPS system | 88 |
| 4.23 | Actual experimental site with PE tarpaulin cover | 88 |
| 4.24 | Placement of pyranometer | 88 |
| 4.25 | View of thermocouples set-up at various locations of system model | 90 |
| 5.1 | Slope of absorber surface normal to the sunrays at solar noon | 92 |
| 5.2 | Daily and monthly average daily extraterrestrial radiation incident on a horizontal surface at the latitude of 3° N | 92 |
| 5.3 | Monthly average daily solar radiation at various azimuth and tilt angles from January to June | 95 |
| 5.4 | Monthly average daily solar radiation at various azimuth and tilt angles from July to December | 96 |
| 5.5 | Monthly average daily solar radiation at tilt angles for south-facing surface from January to December | 97 |

| | | |
|------|--|-----|
| 5.6 | Monthly average daily solar radiation at tilt angles for north-facing surface from January to December | 98 |
| 5.7 | Seasonal average daily solar radiation for different tilt angles | 101 |
| 5.8 | Normalised horizontal extension, d/S_h | 103 |
| 5.9 | Maximum normalised horizontal extension, d/S_h , for south-facing side (zoomed graph) | 104 |
| 5.10 | Maximum normalised horizontal extension, d/S_h , for north-facing side (zoomed graph) | 104 |
| 5.11 | Number of louvre plate at different width of louvre plate for shaded opening of 1200 mm at $d/S_h = 0.6871$ and $\beta_{opt} = 15^\circ$ | 106 |
| 5.12 | Optimum gap between two adjacent louvre plates at different width of louvre plate for shaded opening of 1200 mm at $d/S_h = 0.6871$ and $\beta_{opt} = 15^\circ$ | 107 |
| 5.13 | Total area of louvre plate per unit length for different number of louvre plate | 107 |
| 5.14 | Average daily percentage of shaded area of louvre plate for different width of louvre plate at a range of solar hour angles from 0° to 60° for a shaded opening of 1200mm at $d/S_h = 0.6871$ and $\beta_{opt} = 15^\circ$ | 108 |
| 5.15 | Simulated top loss coefficient for different plate-to-cover spacing | 111 |
| 5.16 | Simulated cover temperature for different plate-to-cover spacing | 112 |
| 5.17 | Bottom loss coefficient for different thickness of back insulation | 112 |
| 5.18 | Edge loss coefficient for three different ratios of thickness to width (h/w_p) | 113 |
| 5.19 | Simulated overall loss coefficient for different plate-to-cover spacing and ratios of h/w_p | 114 |
| 5.20 | Simulated overall loss coefficient for different plate-to-cover spacing and ratios of h/w_p (zoomed graph) | 115 |
| 5.21 | Minimum overall loss coefficient for different ratios of h/w_p and number of solar plate | 116 |

| | | |
|------|--|-----|
| 5.22 | Percentage distribution of top, bottom and edge loss coefficients | 117 |
| 5.23 | Relation of heat removal factor to overall loss coefficient and tube centre-to-centre distance | 118 |
| 5.24 | Heat removal factor for respective tube centre-to-centre distance against total number of tubes on solar plate system for ratios of $h/w_p = 0.15$ | 120 |
| 5.25 | Complete assembly of system model | 123 |
| 5.26 | Continuous daytime experimental data recording on 14 May 2016 under operating condition | 125 |
| 5.27 | Continuous daytime experimental data recording on 23 June 2016 under operating condition | 126 |
| 5.28 | Solar pump operation pattern on 14 May 2016 | 127 |
| 5.29 | Solar pump operation pattern on 23 June 2016 | 128 |
| 5.30 | Water temperature raise inside storage tank on 14 May 2016 | 128 |
| 5.31 | Water temperature raise inside storage tank on 23 June 2016 | 129 |
| 5.32 | Daily duration of solar heat collection from starting time to ending time for 79 sample days | 131 |
| 5.33 | Frequency of starting time and ending time for solar heat collection | 132 |
| 5.34 | Duration of daily solar heat collection with corresponding duration of daily solar pump operation and average daily global irradiance | 133 |
| 5.35 | Daily total energy collected and maximum daily water temperature attained in variation of average daily global irradiance | 135 |
| 5.36 | Daily system efficiency and rate of water temperature raised in variation of average daily global irradiance | 136 |
| 5.37 | Daily system efficiency in variation of rate of temperature raised | 137 |
| 5.38 | Frequency of daily system efficiency and maximum daily water temperature attained | 138 |

| | | |
|------|---|-----|
| 5.39 | Continuous daytime experimental data recording on 15 August 2016 under stagnant condition | 140 |
| 5.40 | Continuous daytime experimental data recording on 19 August 2016 under stagnant condition | 141 |
| 5.41 | Distributions of glass surface temperature and absorber plate surface temperature in variation of global irradiance under operating and stagnant conditions | 142 |
| 5.42 | Experimental and simulated results of glass surface temperature against absorber plate surface temperature | 145 |
| 5.43 | Standard deviations of temperature data and average temperature difference of absorber plate surfaces of solar absorbers 1 and 2 under operating condition | 146 |
| 5.44 | Thermographic image of the shading façade-integrated solar absorber system model on 3 June 2016 at 02:27:46 pm | 147 |
| 5.45 | Thermographic image of the shading façade-integrated solar absorber system model on 25 June 2016 at 11:02:55 am | 147 |
| 5.46 | Photographs and thermographic images of shaded and unshaded areas beneath shading façade-integrated solar absorber system model on 25 June 2016 | 148 |
| 5.47 | Photographs and thermographic images of shaded and unshaded areas beneath shading façade-integrated solar absorber system model on 26 June 2016 | 149 |
| 5.48 | Daily net energy saving in variation of average daily global irradiance | 151 |
| 5.49 | Schematic plumbing diagram of a residential club house using solar system model | 154 |
| 5.50 | Schematic plumbing diagram of solar and heat pump hybrid system for a multi-storey hospital | 155 |

LIST OF SYMBOLS

| | |
|-------------|--|
| A_c | Collector area (m ²) |
| A_e | Area of the edge (m ²) |
| A_{exp} | Effective area of louvre plate exposure to solar ray per unit length (mm ² /mm) |
| A | Internal cross-sectional area of pipe (m ²) |
| b | Bond width (mm) |
| c | Distance between two louvre plates (mm) |
| c' | Gap between the static solar plate arrays (mm) |
| C_b | Bond conductance (W/(m K)) |
| C_p | Specific heat of fluid (J/ (kg K)) |
| d | Horizontal extension (mm) |
| D' | Fraction of beam solar radiation on an inclined surface to total radiation on a horizontal surface (dimensionless) |
| D | Tube outer diameter (mm) |
| D_i | Tube inner diameter (mm) |
| E_{total} | Daily total energy collected (J) |
| E | Daily net energy saving (kWh) |
| F_R | Heat removal factor (dimensionless) |
| F'' | Collector flow factor (dimensionless) |
| F | Fin efficiency or Fin factor (dimensionless) |
| F' | Collector efficiency factor (dimensionless) |
| g | Gravitational constant (m/s ²) |
| G_{on} | Extraterrestrial radiation incident on a plane normal to radiation (W/m ²) |
| G_{sc} | Solar constant (W/m ²) |
| G_o | Extraterrestrial radiation incident on a horizontal plane (W/m ²) |

| | |
|------------------|---|
| G_{avg} | Average daily global irradiance (W/m^2) |
| G | Global irradiance (W/m^2) |
| Gr | Grashof number (dimensionless) |
| H_o | Daily extraterrestrial radiation incident on a horizontal surface (J/m^2) |
| \bar{H}_o | Monthly average daily extraterrestrial radiation incident on a horizontal surface (J/m^2) |
| \bar{H} | Monthly average daily radiation on a horizontal surface (J/m^2) |
| \bar{H}_d | Monthly average daily diffuse irradiation on a horizontal surface (J/m^2) |
| H_d | Daily solar radiation of the test day (J/m^2) |
| H_s | Seasonal average daily solar radiation (J/m^2) |
| \bar{H}_T | Total monthly average daily solar radiation on a tilted surface (J/m^2) |
| h | Plate thickness (mm) |
| h_w | Wind convection heat transfer coefficient ($\text{W}/(\text{m}^2 \text{ K})$) |
| $h_{r,c-a}$ | Radiation heat transfer coefficient from cover to ambient ($\text{W}/(\text{m}^2 \text{ K})$) |
| $h_{c,p-c}$ | Convection heat transfer coefficient between plate and cover ($\text{W}/(\text{m}^2 \text{ K})$) |
| $h_{r,p-c}$ | Radiation heat transfer coefficient from plate to cover ($\text{W}/(\text{m}^2 \text{ K})$) |
| $h_{r,b-a}$ | Radiation heat transfer coefficient from bottom to ambient ($\text{W}/(\text{m}^2 \text{ K})$) |
| h_{b-a} | Convection heat transfer coefficient between bottom and ambient ($\text{W}/(\text{m}^2 \text{ K})$) |
| $h_{r,e-a}$ | Radiation heat transfer coefficient from edge to ambient ($\text{W}/(\text{m}^2 \text{ K})$) |
| h_{e-a} | Convection heat transfer coefficient between edge and ambient ($\text{W}/(\text{m}^2 \text{ K})$) |
| h_{fi} | Heat transfer coefficient between fluid and tube wall ($\text{W}/(\text{m}^2 \text{ K})$) |
| I_o | Daily extraterrestrial radiation incident on a horizontal surface for a specific period between hour angles (J/m^2) |
| I | Direct current (A) |
| \bar{K}_T | Monthly average daily clearness index (dimensionless) |

| | |
|-----------|---|
| k_a | Thermal conductivity of air (W/(m K)) |
| k_b | Bottom insulation thermal conductivity (W/(m K)) |
| k'_b | Bond thermal conductivity W/ (m K) |
| k_e | Edge insulation thermal conductivity (W/(m K)) |
| k_{fi} | Thermal conductivity of fluid (W/(m K)) |
| k_p | Plate thermal conductivity (W/ (m K)) |
| L_{loc} | Longitude of location (degree) |
| L_{st} | Standard time zone meridian (degree) |
| l | Plate length (mm) |
| l_b | Shaded area per unit length of a louvre plate (mm ² /mm) |
| L_{p-c} | Plate-to-cover spacing (mm) |
| \dot{m} | Total mass flow rate of collector (kg/s) |
| M | Water mass in storage tank (kg) |
| num | Number of day of the year |
| n | Number of louvre plate |
| Nu | Nusselt number (dimensionless) |
| Pr | Prandtl number (dimensionless) |
| Q_u | Actual useful energy gain (W) |
| \bar{R} | Ratio of the total monthly average daily solar radiation on an inclined surface to that on a horizontal surface (dimensionless) |
| R' | Thermal resistance value (m ² K/ W) |
| R^2 | Coefficient of determination (dimensionless) |
| R | Correlation coefficient (dimensionless) |
| Ra | Rayleigh number (dimensionless) |
| Re | Reynolds number (dimensionless) |
| S | Solar energy absorbed by absorber plate (W/m ²) |

| | |
|--------------|---|
| S_h | Height of the shaded opening below the horizontal shading façade (mm) |
| T_a | Ambient temperature (°C) |
| T_c | Cover temperature (°C) |
| T_b | Bottom temperature (°C) |
| T_p | Absorber plate temperature (°C) |
| T_{fi} | Inlet fluid temperature (°C) |
| T_{fo} | Outlet fluid temperature (°C) |
| T_m | Mean temperature of the medium (°C) |
| T_w | Tube wall temperature (°C) |
| T_F | Final temperature in storage tank after the test finishes (°C) |
| T_I | Initial temperature in storage tank when the test starts (°C) |
| T_{max} | Maximum daily water temperature (°C) |
| \dot{T} | Rate of temperature raised (°C/hr) |
| U_L | Overall heat loss coefficient (W/(m ² K)) |
| U_t | Top loss coefficient (W/(m ² K)) |
| U_b | Bottom loss coefficient (W/(m ² K)) |
| U_e | Edge loss coefficient (W/(m ² K)) |
| V | Velocity (m/s) |
| V' | Direct voltage (V) |
| W | Tubes centre to centre distance (mm) |
| w_p | Plate width (mm) |
| Δx_b | Thickness of bottom insulation (mm) |
| Δx_e | Thickness of edge insulation (mm) |

Greek symbols

δ Declination angle (degree)

β Slope (degree)

$\beta_{z,noon}$ Slope of the frontal surface of absorber at noontime (degree)

β_{opt} Optimum plate slope (degree)

ϕ Latitude of location (degree)

θ Angle of incidence of beam radiation (degree)

γ Surface azimuth angle (degree)

γ' Average bond thickness (mm)

γ_s Solar azimuth angle (degree)

α_p Profile angle (degree)

α_s Solar altitude angle (degree)

θ_z Zenith angle (degree)

ρ_g Ground reflectance factor (dimensionless)

ρ Density of fluid (kg/m³)

ω Hour angle (degree)

ω_{SS} Sunset hour angle for beam radiation on an inclined surface (degree)

ω_{SR} Sunrise hour angle for beam radiation on an inclined surface (degree)

ω_s Sunset hour angle (degree)

σ Stefan–Boltzmann constant (W/(m² K⁴))

α Thermal diffusivity of air (m²/s)

β' Thermal expansion coefficient of air (1/K)

ε_p Emittance of plate (dimensionless)

ε_c Emittance of cover (dimensionless)

μ Dynamic viscosity (kg/(m·s))

| | |
|------------|--|
| ν | Kinematic viscosity of air (m ² /s) |
| ν_f | Kinematic viscosity of fluid (m ² /s) |
| δt | Plate thickness (mm) |
| η | Daily system efficiency (%) |



CHAPTER 1

INTRODUCTION

1.1 Background

Improving quality of life has accelerated the demand for energy consumption. It is associated with the expending of fossil fuels that are still dominating the present energy market share and challenging its sustainability. To address the current issue, green energy concept has served as a key direction of research and development universally in diminishing the impact of the conventional energy practices such as energy efficiency, sustainable energy alternatives and environmental conservation (Fernando et al., 2015).

Malaysia is a country that lies geographically in the equatorial zone, is accessible to plenty of solar insolation. The solar radiation on ground is about 400 MJ/m^2 to 600 MJ/m^2 monthly or 4 kWh/m^2 to 5 kWh/m^2 per day with average sunshine duration of 4 to 8 hours (Mekhilef et al., 2012). The figures have shown the amount of this natural available energy reaching on an outdoor exposed object is abundant. Due to this fact, Malaysia is commonly recognised by researchers as a potential nation to promote solar energy technology, in which solar thermal energy is oriented mostly in the systems (Oh et al., 2010). Solar thermal presents a prospective outlook in green energy initiative which would contribute about RM 3023 million of energy value per annum (Zamzam et al., 2003).

Building as the marking of human civilisation, has been identified as one of the largest energy consumers. A study shows the building sector has contributed to about 40% of the global energy expenditure due to the modern living standards (Tyagi et al., 2012). In Malaysia, the buildings consume for approximately 13% of the total energy consumption and 48% of electricity spending (Al-Mofleh et al., 2009). Similar to other hot climate countries, a considerable amount of energy has been used for maintaining the desirable indoor space thermal comfort and domestic hot water with the trend of rising incessantly. Out of the total energy use in building, roughly 55% is accounted under the consumptions by heating, ventilation and air conditioning units (Al-Abidi et al., 2012). The statistics clarifies the need of energy in building is mandatory, thus efforts to deal with energy in sustainable form to improve the thermal performance of the buildings are imperative for green building progress.

For the building thermal loads, solar heat can be accounted into energy share in two contexts, which are solar gain attenuation and solar thermal applications (D'Antoni and Saro, 2012). The practice of insulating the building or blocking the incident sunray has been adopted as the primary passive solution in the design stage to optimise the energy consumption. Efforts have been conducted on the building

facades with thermal barrier property. In solar heating system, solar thermal collector is ordinarily known as a reliable green product to harness the solar energy. Building integrated solar energy system attracts much attention presently due to the progress of green concept, in which the integration has been carried out on various building facades such as wall, window, roof, gutter, balcony, awning and shutter. The current trend has indicated the importance of solar thermal integration in façade for future need in sustainable building approach (Chemisana et al., 2013; Chou et al., 2016; Motte et al., 2013a, 2013b; Yang et al., 2013).

1.2 Problem Statement

As the nation is positioned in the region of hot humid tropical climate, it possesses abundant supply of solar radiation on the ground throughout the year with less seasonal effect variation. Despite solar energy is one of the largest renewable energy sources, it has not been fully harnessed and utilised with regard to its potential in building specifically in this climatic zone. The statistics elucidate the energy need in building remains demanding, thus, it is a need to utilise the available energy around the building in a sustainable manner. The utilisation of solar thermal systems suggests a good approach towards sustainable building concept by converting the available solar thermal energy on the modern building facades to more valuable forms economically (Kostic and Pavlovic, 2012; Mammoli et al., 2010).

Several researchers have examined the solar radiation in the country (Eltbaakh et al., 2013; Khatib et al., 2012; Ng et al., 2012; Sopian and Othman, 1992; Sulaiman et al., 1999; Wan Nik et al., 2012); in brief, the previous works were carried out using various techniques to analyse and measure the solar intensity and solar behaviour without concerning the orientation factor in specific. The investigation of the solar intensity at different azimuth and tilt angles is very few in the equatorial tropics despite of its attractive potential in the concept of solar collector–façade integration. Most studies were reported at the middle and high latitudes that might not be applicable in the context of low-latitude regions featuring the relatively less seasonal variation (Jafarkazemi and Saadabadi, 2013; Talebizadeh et al., 2011). As a “rule of thumb”, the south-facing surface offers better solar energy collection for the regions placed in the northern hemisphere and vice-versa (Nieuwoudt and Mathews, 2005; Panchal and Shah, 2012; Pardhi and Bhagoria, 2013). In the region of low latitude, however, the scenario may not be similar. The sun tilts to both southern and northern skies of the site with a more uniform period in one year. Therefore, for the low-latitude region, despite of its location at the northern hemisphere, the north-oriented surface can potentially intercept a prominent amount of solar irradiance. It leads to a rational hypothesis that the north-facing components can receive a reasonable amount of solar radiation energy.

In recent years, the trend of adopting the integrated solar energy systems in building has become a sustainable solution following the rapid growth in building energy consumption. In term of architectural appearance and building plane, a study has identified that the building façade-integrated solar collector is of great importance to

utilise solar energy optimally (Shi et al., 2013). Literature has presented the integration of solar energy model in numerous building facades to investigate its thermal performance and its importance was reasoned. An increase of thermal collection area by this manner could compensate the limitation of a standard solar collector in the best installation position (Xuan et al., 2012). It is essential to identify an alternative position for capturing the free solar thermal as a study shows there are about 20% of the residential buildings facing architectural restraints to install the solar thermal units (Mekhilef et al., 2012). Besides, adoption of solar collector integrated in building can be associated with heat removal from building envelope by the mean of heat convection. It presents a prominent scheme for cutting down indoor cooling demand, most effectively in hot regions (D'Antoni and Saro, 2012). The integration of solar energy systems on the building could improve the insulation features, establish an active building envelope energy production in attachment to solar energy utilisation (Furundzic et al., 2012). Overview the aforementioned remarks, integrating the solar thermal collection model into the building facades could upgrade the façade to be multifunctional that is not merely cutting down the solar gain but producing sustainable energy source as the main focus of this work.

Due to visual comfort, using fenestration system in architectural style is increasingly apparent. Nevertheless, clear glass could transmit over 75% of incident solar radiation into the indoor space of building (ASHRAE, 2009). Researchers have been concerning this subject with connotation to lower the solar irradiance from entering the buildings by means of shading philosophy. Report from ASHRAE (2009) expressed that the attachment of shading product on fenestration could shrink solar heat gain by as much as 80%, showing its high energy performance. The literature has widely acknowledged and attested the importance of shading device in building energy saving (Bellia et al., 2013; Cheng et al., 2013; Palmero-Marrero and Oliveira, 2010). It is particularly crucial in tropical and arid regions (Al-Shareef et al., 2001).

The existing literature mainly discussed the performance of shading devices in term of solar heat blockage for energy saving and daylight comfort, excluding the potential of energy collection from the components. Several research efforts related to the shading façade-integrated solar energy system were made, however, the investigation on the energy production by shading device is yet limited and at the early stage (Chou et al., 2016; Mandalaki et al., 2012; Palmero-Marrero and Oliveira, 2004, 2006, 2008; Sun and Yang, 2010). The value of its overall thermal quality remains undefined. Besides, most of the building integrated solar thermal models were developed and studied in higher latitude regions over 10° N (Chemisana et al., 2013; Chou et al., 2016; Motte et al., 2013b; Palmero-Marrero and Oliveira, 2008; Ramirez-Stefanou et al., 2011). Investigation in the equatorial tropics is rare despite of its attractive potential.

Two preliminary field observations have been conducted to demonstrate a proof of concept to further strengthen and support the viability of this research. For the first field study, the solar irradiance for the month of March 2013 was measured under the actual tropical sky at latitude of 2° 58' N, longitude of 101° 44' E and elevation of 69 m. Figures 1.1 to 1.2 show the measured global solar irradiance in two sampling days.

The curves present an intermittent global solar irradiance profile due to the irregular cloud blockages and short afternoon rain. The weather trend has been confirmed showing the similar solar pattern to the previous field data collected at the same location during June 2010 till October 2010 (Ng, 2011). Despite the fluctuations, the solar irradiance reaches a peak during the solar noon period with the value of exceeding 900 W/m^2 . This demonstrates that the location is capable of offering an encouraging amount of incoming solar energy source.

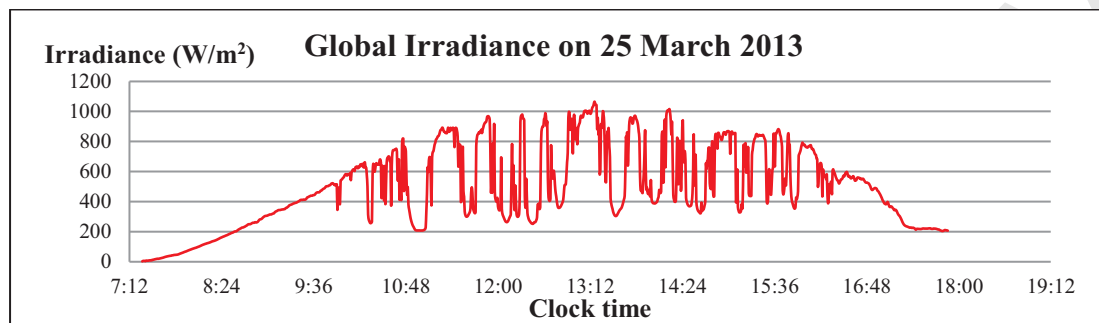


Figure 1.1: Global irradiance on 25 March 2013

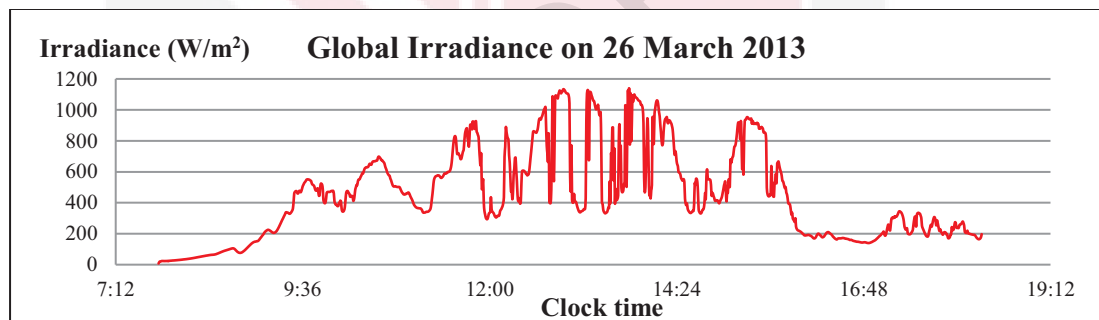


Figure 1.2: Global irradiance on 26 March 2013

Second observation has been carried out at the Engineering Faculty of UPM, located at the same region of the test field, to examine the fenestration and shading facades under the exposure of solar irradiance. Figures 1.3 and 1.4 present the results of thermographic analysis. Through the detail examination using thermal imager, the facades are obviously exposed to solar heat, absorbing a prominent amount of solar thermal energy although the structures are not meant for heat collection. The maximum surface temperature of the fenestration unit without shading facade could go beyond 44°C . For a site using shading facades, the solar irradiance has been attenuated leading to a relatively high surface temperature of shading facade with maximum value of over 46°C . The results have supported the previously stated literary notes. From the observations, these areas might be an imperceptible platform to harness solar thermal energy. It does not require extra space for the solar thermal collector installation. The evidence suggests a solar thermal integral unit could be a part of the shading structure.

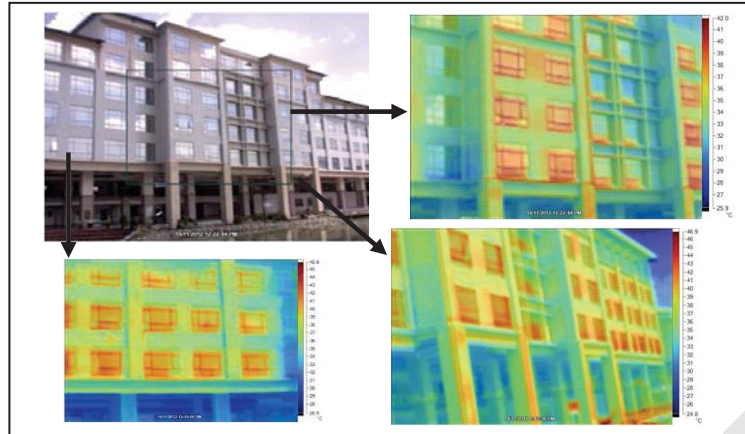


Figure 1.3: Thermographic images of fenestration structures under the exposure of solar irradiance on 3 May 2013

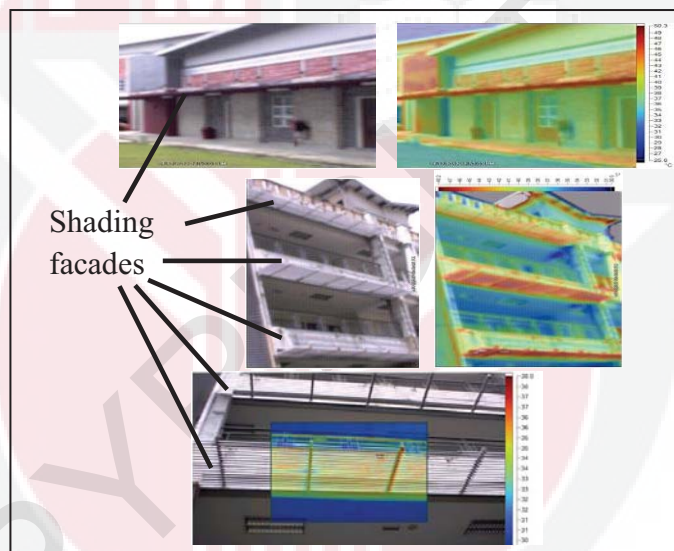


Figure 1.4: Thermographic images of shading devices under the exposure of solar irradiance on 3 May 2013

After reviewing the literature, it is found that the previous literature has lacked the following issues generally:

- (i) Investigation on the façade orientation and solar radiation relationship for low latitude region below latitude of 10° N.
- (ii) Literature lacks the study on the shading façade-integrated solar thermal collector in both theoretical and experimental analysis.
- (iii) Geometrical characterisation of the solar thermal based shading façade.
- (iv) Investigations of the thermal performance of the shading façade-integrated solar thermal collector under hot tropical climates.

Addressing these research gaps is crucial to offer a new approach for the green energy progress in building. Therefore, there is a motivation for the author to

investigate and assess the thermal potential of a shading façade-integrated solar absorber system as the problems mentioned above to complement the solar thermal concept in buildings.

As hypotheses,

- H₀₁: As the “rule of thumb” for the regions located in the northern hemisphere, the south oriented facades will receive high solar irradiance disregard the north orientation. In a low latitude region, however, the north oriented façade can potentially intercept a prominent amount of solar irradiance.
- H₀₂: Shading facade structure is a potential platform of integrating solar thermal collector which could possibly provide a sensible amount of solar thermal energy for heating the water of over 40 °C.
- H₀₃: The shading façade-integrated solar absorber system is capable to convert the incident solar energy into useful energy output with comparable efficiency as a conventional solar collector.

1.3 Objectives

The aim of this research is to harness incident heat on a building façade. In specific, the objectives are as follows:

- (i) To determine the interception of solar radiation on various orientations of shading device under the low latitude climates in country to optimise its orientation.
- (ii) To develop a numerical simulation of shading façade-integrated solar absorber system to analyse its geometrical and thermal characteristics.
- (iii) To configure the system optimally by assessing its geometrical parameters and thermal performance.
- (iv) To fabricate and demonstrate an experimental model of shading façade-integrated solar absorber to investigate the system model under hot tropical climate and to verify results.

1.4 Scope and Limitation

The scope and limitation of the present work are listed as follows:

- (i) A simulation tool, MATLAB software, was employed in the development of numerical model based on theoretical considerations.
- (ii) The well acknowledged literatures, (Duffie and Beckman, 2006; Klein and Theilacker, 1981), have been adopted as the references to develop the solar radiation algorithm model.
- (iii) Twelve months in Julian calendar was undertaken in the simulation. A published solar radiation data bank for the location of Bandar Baru Bangi by Sopian and Othman (1992) was referred in the model simulation. The data was chosen due to its location which was the nearest to the site of the present study with merely 0° 02' away in latitude. Besides, it was a long

term data that could sufficiently represent the actual local solar radiation level to best fit the solar model by Klein and Theilacker (1981).

- (iv) The façade surface with azimuth angles from -180° to 180° was studied. Tilt angles from 0° in horizontal to 90° in vertical were within the scope to determine the interception of solar radiation.
- (v) A basic layout of horizontal overhang shading device was chosen as a reference platform of integrating solar absorber due to its very common application in tropical and subtropical regions (Cheng et al., 2013; Hassan and Bakhlah, 2013). Despite the horizontal configuration could offer the good shading effect and interception of solar irradiance, this position might not be the optimum tilt angle for solar energy collection (Sun and Yang, 2010). Therefore, a louvre system in horizontal orientation was intended in the present work.
- (vi) The size of horizontal extension required for full shading was determined based on the suggested solar time interval from 09:00 to 15:00, corresponding to the solar hour angle of $\pm 45^{\circ}$. The duration is adequate corresponding to the overheated time frame with high solar intensity in tropics. Other similar research works have employed the same or lesser solar hour (Capeluto, 2003; Garg and Bansal, 1986; Palmero-Marrero and Oliveira, 2004; Paramita and Koerniawan, 2013).
- (vii) The concept of flat plate collector was employed to develop the integration of solar absorber in the horizontal louvre shading facade. The configuration of the façade was designed based on the principle form of a standard flat plate collector (Duffie and Beckman, 2006) and recommendations by other researchers and manufacturer (Cheng et al., 2013; Mandalaki et al., 2012; Palmero-Marrero and Oliveira, 2010; Ralegaonkar and Gupta, 2005; RENSON[®], 2013).
- (viii) A typical and common residential building's window dimension of 600 mm (width) \times 1200 mm (height) was adopted as a reference to define the sizing of the shading façade-solar absorber system (Al-Tamimi and Fadzil, 2011; Liping and Hien, 2007).
- (ix) A shading façade-solar absorber model was fabricated with the identical physical scale of the simulation model. Outdoor experiment was conducted from May 2016 until November 2016. These periods are suitable for solar energy system tests (Azhari et al., 2008; Sopian and Othman, 1992).
- (x) To achieve a sufficient actual outdoor data collection, 139 days data reading were collected throughout the seven months. It was adequate for the outdoor test referred to several experimental studies that were carried out in a relatively shorter period (Amin et al., 2009; Chong et al., 2009; Tang et al., 2008; Zambolin and Del Col, 2010). The time setting in the data logging devices was set to the actual local clock time referring to Malaysian Standard Time provided by SIRIM (2016).
- (xi) It should be noted that the rain-repelling, illumination and excessive wind speed were not taken into account in the present work as there were no data available due to the limited facilities (Ahmed and Wongpanyathaworn, 2012). The shading performance on improving indoor thermal comfort of a building was also out of the scope in the present study.

1.5 Significance of Study

The significance of this research is a novel development of shading façade-integrated solar absorber system. The study intends to disclose the potential of the integrated system that might not merely serve to block excessive solar gain but potentially harness solar energy for thermal application. As limited knowledge is available in this area, it is expected to present findings in the use of solar collector façade integration strategic operated under local environment as the knowledge and information to the party of interest such as architects, engineers, industries and general public about its characteristics and performance. The established theoretical and experimental models could be useful, workable and practical for real case study of pilot scale subjected to evaluation. Finally, the knowledge is not limited to the shading structures, but possibly extend to other standard building facades with high solar exposure to harness the solar thermal energy on building envelope for sustainable application.

1.6 Thesis Layout

The thesis is organised into six chapters. Chapter 1 is general introduction, which presents the research motivations, problem statement, objectives, research questions, scope and limitation and significance of the study. Chapter 2 discusses literature related to the solar energy study, building architecture and solar heat transfer mechanism that are previously carried out by other researchers. This chapter contains the reviews of solar radiation in Malaysia, solar geometry, solar irradiance on building orientation, orientation of solar absorber, building integrated solar thermal systems, shading façade, solar collectors, solar water heating methods, flow arrangement of solar collector, performance analysis of solar collector and computational numerical methods. The overall methodological approach of the research work is presented into two chapters, Chapters 3 and 4. Chapter 3 presents the theoretical considerations, which the theoretical and mathematical model development of solar radiation model, shading façade-integrated solar absorber geometrical model, solar absorber model and the overall algorithm of system modelling are formulated and derived in detail holistically. Meanwhile, Chapter 4 demonstrates the materials and methods for the construction, system layout, control mechanism, outdoor experimental set-up and procedures of the shading façade-integrated solar absorber system model. Chapter 5 presents and discusses the numerical and experimental results of the system model in detail. Its economic aspect and potential application are depicted too. Finally, Chapter 6 contains the conclusion and recommendation for future work.

REFERENCES

- Abu-Zour, A. M., Riffat, S. B., and Gillott, M. (2006). New design of solar collector integrated into solar louvres for efficient heat transfer. *Applied Thermal Engineering*, 26(16), 1876-1882.
- Abu-Zour, A. M., Riffat, S. B., and Wilson, R. (2005). Comparison Between Heat Pipe and Direct Heat Exchange Solar Louvre Collectors. *International Journal of Green Energy*, 2(4), 353-364.
- Ahmed, N. A., and Wongpanyathaworn, K. (2012). Optimising Louver Location to Improve Indoor Thermal Comfort based on Natural Ventilation. *Procedia Engineering*, 49, 169-178.
- Akhtar, N., and Mullick, S. C. (2012). Effect of absorption of solar radiation in glass-cover(s) on heat transfer coefficients in upward heat flow in single and double glazed flat-plate collectors. *International Journal of Heat and Mass Transfer*, 55(1-3), 125-132.
- Al-Abidi, A. A., Bin Mat, S., Sopian, K., Sulaiman, M. Y., Lim, C. H., and Th, A. (2012). Review of thermal energy storage for air conditioning systems. *Renewable and Sustainable Energy Reviews*, 16(8), 5802-5819.
- Al-Mofleh, A., Taib, S., Mujeebu, M. A., and Salah, W. (2009). Analysis of sectoral energy conservation in Malaysia. *Energy*, 34(6), 733-739.
- Al-Shareef, F. M., Oldham, D. J., and Carter, D. J. (2001). A computer model for predicting the daylight performance of complex parallel shading systems. *Building and Environment*, 36(5), 605-618.
- Al-Tamimi, N. A., and Fadzil, S. F. S. (2011). The Potential of Shading Devices for Temperature Reduction in High-Rise Residential Buildings in the Tropics. *Procedia Engineering*, 21(0), 273-282.
- Alamsyah, T. M. I., Sopian, K., and Shahrir, A. (2004). Predicting average energy conversion of photovoltaic system in Malaysia using a simplified method. *Renewable Energy*, 29(3), 403-411.
- Amin, N., Lung, C. W., and Sopian, K. (2009). A practical field study of various solar cells on their performance in Malaysia. *Renewable Energy*, 34(8), 1939-1946.
- Amori, K. E., and Abd-AllRaheem, M. A. (2014). Field study of various air based photovoltaic/thermal hybrid solar collectors. *Renewable Energy*, 63(0), 402-414.
- Anderson, T. N., Duke, M., and Carson, J. K. (2010). The effect of colour on the thermal performance of building integrated solar collectors. *Solar Energy Materials and Solar Cells*, 94(2), 350-354.

- Annaratone, D. (2010). *Engineering Heat Transfer*: Springer-Verlag Berlin Heidelberg.
- ASHRAE. (2007). *2007 ASHRAE Handbook - HVAC Applications*. Atlanta: The American Society of Heating, Refrigerating and Air-Conditioning Engineers.
- ASHRAE. (2008). *2008 ASHRAE Handbook - HVAC Systems and Equipment*. Atlanta: The American Society of Heating, Refrigerating and Air-Conditioning Engineers.
- ASHRAE. (2009). *2009 ASHRAE Handbook - Fundamental*. Atlanta: The American Society of Heating, Refrigerating and Air-Conditioning Engineers.
- Assem, E. O. (2011). Correlating thermal transmittance limits of walls and roofs to orientation and solar absorption. *Energy and Buildings*, 43(11), 3173-3180.
- Axaopoulos, P. J., and Fylladitakis, E. D. (2013). Performance and economic evaluation of a hybrid photovoltaic/thermal solar system for residential applications. *Energy and Buildings*, 65(0), 488-496.
- Ayompe, L. M., Duffy, A., Mc Keever, M., Conlon, M., and McCormack, S. J. (2011). Comparative field performance study of flat plate and heat pipe evacuated tube collectors (ETCs) for domestic water heating systems in a temperate climate. *Energy*, 36(5), 3370-3378.
- Azhari, A. W., Sopian, K., and Zaharim, A. (2008). New Approach For Predicting Solar Radiation In Tropical Environment Using Satellite Images - Case Study Of Malaysia. *WSEAS Transactions on Environment and Development*, 4(4), 373-378.
- Badache, M., Rouse, D. R., Halle, S., and Quesada, G. (2013). Experimental and numerical simulation of a two-dimensional unglazed transpired solar air collector. *Solar Energy*, 93, 209-219.
- Badran, A. A., and Badran, A. F. (1998). An integrated solar collector/roof system utilizing a water-trickle clay-tile collector. *International Journal of Solar Energy*, 19(4), 213-231.
- Bakirci, K. (2012). General models for optimum tilt angles of solar panels: Turkey case study. *Renewable and Sustainable Energy Reviews*, 16(8), 6149-6159.
- Bari, S. (2000). Optimum slope angle and orientation of solar collectors for different periods of possible utilization. *Energy Conversion and Management*, 41(8), 855-860.
- Bari, S. (2001). Optimum orientation of domestic solar water heaters for the low latitude countries. *Energy Conversion and Management*, 42(10), 1205-1214.

- Behrang, M. A., Assareh, E., Noghrehabadi, A. R., and Ghanbarzadeh, A. (2011). New sunshine-based models for predicting global solar radiation using PSO (particle swarm optimization) technique. *Energy*, 36(5), 3036-3049.
- Belakehal, A., and Tabet Aoul, K. (1996). Shading and shadowing: Concepts for an interactive strategy between solar control and aesthetics in the design of the facade. Reference to arid zones. *Renewable Energy*, 8(1-4), 323-326.
- Bellia, L., De Falco, F., and Minichiello, F. (2013). Effects of solar shading devices on energy requirements of standalone office buildings for Italian climates. *Applied Thermal Engineering*, 54(1), 190-201.
- Bessoudo, M., Tzempelikos, A., Athienitis, A. K., and Zmeureanu, R. (2010). Indoor thermal environmental conditions near glazed facades with shading devices - Part I: Experiments and building thermal model. *Building and Environment*, 45(11), 2506-2516.
- Bonhote, P., Eperon, Y., and Renaud, P. (2009). Unglazed coloured solar absorbers on facade: Modelling and performance evaluation. *Solar Energy*, 83(6), 799-811.
- Bostan, I., Gheorghe, A., Dulgheru, V., Sobor, I., Bostan, V., and Sochirean, A. (2013). Solar Energy. In *Resilient Energy Systems* (Vol. 19, pp. 47-164): Springer Netherlands.
- Buonomano, A., Calise, F., and Palombo, A. (2012). Solar heating and cooling systems by CPVT and ET solar collectors: A novel transient simulation model. *Applied Energy*(0).
- Buzas, J., and Kicsiny, R. (2014). Transfer functions of solar collectors for dynamical analysis and control design. *Renewable Energy*, 68(0), 146-155.
- Canaletti, J., Notton, G., and Cristofari, C. (2009). An Innovative Building-Integrated Solar-Air Collector: Presentation and First Results. In R. Howlett, L. C. Jain & S. H. Lee (Eds.), *Sustainability in Energy and Buildings* (pp. 59-69): Springer Berlin Heidelberg.
- Capeluto, I. G. (2003). Energy performance of the self-shading building envelope. *Energy and Buildings*, 35(3), 327-336.
- Carbonari, A., Fioretti, R., Naticchia, B., and Principi, P. (2012). Experimental estimation of the solar properties of a switchable liquid shading system for glazed facades. *Energy and Buildings*, 45(0), 299-310.
- Celik, A. N., and Muneer, T. (2013). Neural network based method for conversion of solar radiation data. *Energy Conversion and Management*, 67(0), 117-124.
- Cengel, Y. A., and Cimbala, J. M. (2010). *Fluid Mechanics: Fundamentals and Applications* (Second ed.): McGraw-Hill.

- Charde, M., and Gupta, R. (2013). Design development and thermal performance evaluation of static sunshade and brick cavity wall: An experimental study. *Energy and Buildings*, 60(0), 210-216.
- Chaurasia, P. B. L. (2000). Solar water heaters based on concrete collectors. *Energy*, 25(8), 703-716.
- Chemisana, D., Lopez-Villada, J., Coronas, A., Rosell, J. I., and Lodi, C. (2013). Building integration of concentrating systems for solar cooling applications. *Applied Thermal Engineering*, 50(2), 1472-1479.
- Chen, Y.-M., Lee, C.-H., and Wu, H.-C. (2005). Calculation of the optimum installation angle for fixed solar-cell panels based on the genetic algorithm and the Simulated-annealing method. *Energy Conversion, IEEE Transactions on*, 20(2), 467-473.
- Cheng, C. L., Liao, L. M., and Chou, C. P. (2013). A study of summarized correlation with shading performance for horizontal shading devices in Taiwan. *Solar Energy*, 90(0), 1-16.
- Cheung, H. D., and Chung, T. M. (2007). Analyzing sunlight duration and optimum shading using a sky map. *Building and Environment*, 42(9), 3138-3148.
- Chong, K. K., Siaw, F. L., Wong, C. W., and Wong, G. S. (2009). Design and construction of non-imaging planar concentrator for concentrator photovoltaic system. *Renewable Energy*, 34(5), 1364-1370.
- Chou, D.-C., Chang, C.-S., and Chang, J.-C. (2016). Energy conservation using solar collectors integrated with building louver shading devices. *Applied Thermal Engineering*, 93, 1282-1294.
- Chow, T. T., and Chan, A. L. S. (2004). Numerical study of desirable solar-collector orientations for the coastal region of South China. *Applied Energy*, 79(3), 249-260.
- Chow, T. T., Chan, A. L. S., Fong, K. F., and Lin, Z. (2005). Hong Kong solar radiation on building facades evaluated by numerical models. *Applied Thermal Engineering*, 25(13), 1908-1921.
- Chow, T. T., Li, C., and Lin, Z. (2011a). The function of solar absorbing window as water-heating device. *Building and Environment*, 46(4), 955-960.
- Chow, T. T., Li, C., and Lin, Z. (2011b). Thermal characteristics of water-flow double-pane window. *International Journal of Thermal Sciences*, 50(2), 140-148.
- Chwieduk, D., and Bogdanska, B. (2004). Some recommendations for inclinations and orientations of building elements under solar radiation in Polish conditions. *Renewable Energy*, 29(9), 1569-1581.

- Chwieduk, D. A. (2009). Recommendation on modelling of solar energy incident on a building envelope. *Renewable Energy*, 34(3), 736-741.
- Cordeau, S., and Barrington, S. (2011). Performance of unglazed solar ventilation air pre-heaters for broiler barns. *Solar Energy*, 85(7), 1418-1429.
- Croitoru, C. V., Nastase, I., Bode, F. I., and Meslem, A. (2016). Thermodynamic investigation on an innovative unglazed transpired solar collector. *Solar Energy*, 131, 21-29.
- Cronemberger, J., Caamano-Martin, E., and Sanchez, S. V. (2012). Assessing the solar irradiation potential for solar photovoltaic applications in buildings at low latitudes - Making the case for Brazil. *Energy and Buildings*, 55(0), 264-272.
- D'Antoni, M., and Saro, O. (2012). Massive Solar-Thermal Collectors: A critical literature review. *Renewable and Sustainable Energy Reviews*, 16(6), 3666-3679.
- Dagdougui, H., Ouammi, A., Robba, M., and Sacile, R. (2011). Thermal analysis and performance optimization of a solar water heater flat plate collector: Application to Tetouan (Morocco). *Renewable and Sustainable Energy Reviews*, 15(1), 630-638.
- Datta, G. (2000). Chapter 375 - A Trnsys Simulation to Study Effect of External Fixed Horizontal Louver Shading Devices on Sizing of Cooling and Heating Systems for Buildings. In A. A. M. Sayigh (Ed.), *World Renewable Energy Congress VI* (pp. 1796-1799). Oxford: Pergamon.
- Datta, G. (2001). Effect of fixed horizontal louver shading devices on thermal performance of building by TRNSYS simulation. *Renewable Energy*, 23(3-4), 497-507.
- Daut, I., Irwanto, M., Irwan, Y. M., Gomesh, N., and Ahmad, N. S. (2011). Combination of Hargreaves method and linear regression as a new method to estimate solar radiation in Perlis, Northern Malaysia. *Solar Energy*, 85(11), 2871-2880.
- Del Col, D., Padovan, A., Bortolato, M., Dai Pre, M., and Zambolin, E. (2013). Thermal performance of flat plate solar collectors with sheet-and-tube and roll-bond absorbers. *Energy*, 58, 258-269.
- Duffie, J. A., and Beckman, W. A. (2006). *Solar Engineering of Thermal Processes* (Third Edition ed.). United States of America: John Wiley & Sons, Inc.
- Eismann, R., and Prasser, H.-M. (2013). Correction for the absorber edge effect in analytical models of flat plate solar collectors. *Solar Energy*, 95(0), 181-191.

- El-Sebaili, A. A., Al-Hazmi, F. S., Al-Ghamdi, A. A., and Yaghmour, S. J. (2010). Global, direct and diffuse solar radiation on horizontal and tilted surfaces in Jeddah, Saudi Arabia. *Applied Energy*, 87(2), 568-576.
- Elminir, H. K., Ghitas, A. E., El-Hussainy, F., Hamid, R., Beheary, M. M., and Abdel-Moneim, K. M. (2006). Optimum solar flat-plate collector slope: Case study for Helwan, Egypt. *Energy Conversion and Management*, 47(5), 624-637.
- Elsayed, M. M. (1989). Optimum orientation of absorber plates. *Solar Energy*, 42(2), 89-102.
- Eltbaakh, Y. A., Ruslan, M. H., Alghoul, M. A., Othman, M. Y., and Sopian, K. (2013). Measurements of spectral-band solar irradiance in Bangi, Malaysia. *Solar Energy*, 89(0), 62-80.
- Erbs, D. G., Klein, S. A., and Duffie, J. A. (1982). Estimation of the diffuse radiation fraction for hourly, daily and monthly-average global radiation. *Solar Energy*, 28(4), 293-302.
- Felske, J. D. (1978). The effect of off-south orientation on the performance of flat-plate solar collectors. *Solar Energy*, 20(1), 29-36.
- Fernando, d.-P., Calvo-Silvosa, A., Iglesias Antelo, S., and Soares, I. (2015). The European low-carbon mix for 2030: The role of renewable energy sources in an environmentally and socially efficient approach. *Renewable and Sustainable Energy Reviews*, 48, 49-61.
- FLIR. (2015). User's Manual FLIR Tools/Tool+. FLIR Systems, Inc.
- Furundzic, A. K., Kosoric, V., and Golic, K. (2012). Potential for reduction of CO₂ emissions by integration of solar water heating systems on student dormitories through building refurbishment. *Sustainable Cities and Society*, 2(1), 50-62.
- Gao, L., and Bai, H. (2009, 27-31 March 2009). *Study on the Application Potential of Solarwall System in Northern China*. Paper presented at the Power and Energy Engineering Conference, 2009. APPEEC 2009. Asia-Pacific.
- Gao, L., Bai, H., Fang, X., and Wang, T. (2013). Experimental study of a building-integrated solar air heating system in cold climate of China. *Energy and Buildings*, 65(0), 359-367.
- Garcia, A., Martin, R. H., and Perez-Garcia, J. (2013). Experimental study of heat transfer enhancement in a flat-plate solar water collector with wire-coil inserts. *Applied Thermal Engineering*, 61(2), 461-468.
- Garg, S. N., and Bansal, N. K. (1986). Calculation of appropriate size fixed sunshade overhangs over windows of different orientations. *Energy Conversion and Management*, 26(3-4), 283-288.

- Ghani, F., Duke, M., and Carson, J. K. (2012). Effect of flow distribution on the photovoltaic performance of a building integrated photovoltaic/thermal (BIPV/T) collector. *Solar Energy*, 86(5), 1518-1530.
- Gnielinski, V. (2010). G1 Heat Transfer in Pipe Flow. In *VDI Heat Atlas* (pp. 691-700): Springer Berlin Heidelberg.
- Gomez-Munoz, V. M., and Porta-Gandara, M. A. (2004). General model to build awnings and external walls with optimum shading interaction. *Renewable Energy*, 29(4), 605-613.
- Gongora-Gallardo, G., Castro-Gil, M., Colmenar-Santos, A., and Tawfik, M. (2013). Efficiency factors of solar collectors of parallel plates for water. *Solar Energy*, 94(0), 335-343.
- Gonzalez-Pardo, A., Cesar Chapa, S., Gonzalez-Aguilar, J., and Romero, M. (2013). Optical performance of vertical heliostat fields integrated in building facades for concentrating solar energy uses. *Solar Energy*, 97(0), 447-459.
- Google Maps. (2016). Infrastructure University Kuala Lumpur (Publication.: <https://www.google.com.my/maps/@2.9789967,101.7385737,3393m/data=!3m1!1e3>
- Gopinathan, K. K., Maliehe, N. B., and Mpholo, M. I. (2007). A study on the intercepted insolation as a function of slope and azimuth of the surface. *Energy*, 32(3), 213-220.
- Goswami, D. Y., Kreith, F., and Kreider, J. F. (2000). *Principles of Solar Engineering* (Second Edition ed.). United State: Taylor & Francis.
- Gueymard, C. A. (2009). Direct and indirect uncertainties in the prediction of tilted irradiance for solar engineering applications. *Solar Energy*, 83(3), 432-444.
- Gugliermetti, F., and Bisegna, F. (2006). Daylighting with external shading devices: design and simulation algorithms. *Building and Environment*, 41(2), 136-149.
- Haase, M., and Amato, A. (2009). An investigation of the potential for natural ventilation and building orientation to achieve thermal comfort in warm and humid climates. *Solar Energy*, 83(3), 389-399.
- Hachicha, A. A., Rodriguez, I., Capdevila, R., and Oliva, A. (2013). Heat transfer analysis and numerical simulation of a parabolic trough solar collector. *Applied Energy*, 111, 581-592.
- Hamdani, M., Bekkouche, S. M. A., Benouaz, T., and Cherier, M. K. (2012). Study and Effect of Orientation Two Room of Buildings Located in Ghardaia, Algeria. *Energy Procedia*, 18(0), 632-639.

- Hamed, M., Fellah, A., and Ben Brahim, A. (2014). Parametric sensitivity studies on the performance of a flat plate solar collector in transient behavior. *Energy Conversion and Management*, 78(0), 938-947.
- Hammad, F., and Abu-Hijleh, B. (2010). The energy savings potential of using dynamic external louvers in an office building. *Energy and Buildings*, 42(10), 1888-1895.
- Handoyo, E. A., Ichسانی, D., and Prabowo. (2013). The Optimal Tilt Angle of a Solar Collector. *Energy Procedia*, 32, 166-175.
- Hao Q., Fu B., Fei T. (2017). A Study of Space Syntax and Sustainable Design in Chinese Vocational Education Parks: Three Case Studies. In Sayigh A. (Eds.), *Mediterranean Green Buildings & Renewable Energy* (pp. 355-368): Springer, Cham.
- Hassan, A. S., and Bakhlah, M. S. O. (2013). Shading and Extent of Sunlight Penetration on House Facades of the Early Terraced House Type in Petaling Jaya Old Town, Malaysia. *International Transaction Journal of Engineering, Management, & Applied Sciences & Technologies*, 4(3), 191 - 206.
- Hassan, M. M., and Beliveau, Y. (2007). Design, construction and performance prediction of integrated solar roof collectors using finite element analysis. *Construction and Building Materials*, 21(5), 1069-1078.
- Hobbi, A., and Siddiqui, K. (2009). Experimental study on the effect of heat transfer enhancement devices in flat-plate solar collectors. *International Journal of Heat and Mass Transfer*, 52(19-20), 4650-4658.
- Hollands, K. G. T., Unny, T. E., Raithby, G. D., and Konicek, L. (1976). Free Convective Heat Transfer Across Inclined Air Layers. *Journal of Heat Transfer*, 98(2), 189-193.
- Hollick, J. C. (1994). Unglazed solar wall air heaters. *Renewable Energy*, 5(1), 415-421.
- Hwang, T., Kang, S., and Kim, J. T. (2012). Optimization of the building integrated photovoltaic system in office buildings - Focus on the orientation, inclined angle and installed area. *Energy and Buildings*, 46(0), 92-104.
- Ibrahim, D. (1995). Optimum tilt angle for solar collectors used in Cyprus. *Renewable Energy*, 6(7), 813-819.
- Iqbal, M. (1979). Optimum collector slope for residential heating in adverse climates. *Solar Energy*, 22(1), 77-79.
- Ismail, M. S., Moghavvemi, M., and Mahlia, T. M. I. (2013). Analysis and evaluation of various aspects of solar radiation in the Palestinian territories. *Energy Conversion and Management*, 73, 57-68.

- Jafarkazemi, F., Ali Saadabadi, S., and Pasdarsahri, H. (2012). The optimum tilt angle for flat-plate solar collectors in Iran. *Journal of Renewable and Sustainable Energy*, 4(1).
- Jafarkazemi, F., and Saadabadi, S. A. (2013). Optimum tilt angle and orientation of solar surfaces in Abu Dhabi, UAE. *Renewable Energy*, 56(0), 44-49.
- Ji, J., Luo, C., Chow, T.-T., Sun, W., and He, W. (2011). Thermal characteristics of a building-integrated dual-function solar collector in water heating mode with natural circulation. *Energy*, 36(1), 566-574.
- Jones, G. F., and Lior, N. (1994). Flow distribution in manifolded solar collectors with negligible buoyancy effects. *Solar Energy*, 52(3), 289-300.
- Jorge, J., Puigdomenech, J., and Cusido, J. A. (1993). A practical tool for sizing optimal shading devices. *Building and Environment*, 28(1), 69-72.
- Juanico, L. (2008). A new design of roof-integrated water solar collector for domestic heating and cooling. *Solar Energy*, 82(6), 481-492.
- Kabeel, A. E., and El-Said, E. M. S. (2014). Applicability of flashing desalination technique for small scale needs using a novel integrated system coupled with nanofluid-based solar collector. *Desalination*, 333(1), 10-22.
- Kalogirou, S. A. (2009). Chapter five - Solar Water Heating Systems. In *Solar Energy Engineering* (pp. 251-314). Boston: Academic Press.
- Kalogirou, S. A. (2014). Chapter 3 - Solar Energy Collectors. In *Solar Energy Engineering (Second Edition)* (pp. 125-220). Boston: Academic Press.
- Kensek, K., Noble, D., Schiler, M., and Setiadarma, E. (1996). Shading Mask: a teaching tool for sun shading devices. *Automation in Construction*, 5(3), 219-231.
- Khalifa, A. J. N., and Abdul, J. R. A. (2010). Conventional versus storage domestic solar hot water systems: A comparative performance study. *Energy Conversion and Management*, 51(2), 265-270.
- Khatib, T., Mohamed, A., Mahmoud, M., and Sopian, K. (2012). An Assessment of Diffuse Solar Energy Models in Terms of Estimation Accuracy. *Energy Procedia*, 14(0), 2066-2074.
- Khatib, T., Mohamed, A., Sopian, K., and Mahmoud, M. (2012). Assessment of Artificial Neural Networks for Hourly Solar Radiation Prediction. *International Journal of Photoenergy*, 2012, 7.
- Khatib, T., Mohamed, A., and Sopian, K. (2012). Optimization of a PV/wind micro-grid for rural housing electrification using a hybrid iterative/genetic algorithm: Case study of Kuala Terengganu, Malaysia. *Energy and Buildings*, 47(0), 321-331

- Kikas, N. P. (1995). Laminar flow distribution in solar systems. *Solar Energy*, 54(4), 209-217.
- Kim, G., Lim, H. S., Lim, T. S., Schaefer, L., and Kim, J. T. (2012). Comparative advantage of an exterior shading device in thermal performance for residential buildings. *Energy and Buildings*, 46(0), 105-111.
- Klein, S. A., and Theilacker, J. C. (1981). An Algorithm for Calculating Monthly-Average Radiation on Inclined Surfaces. *J. Sol. Energy Eng.*, 103(1), 29-33.
- Kontoleon, K. J. (2012). Dynamic thermal circuit modelling with distribution of internal solar radiation on varying facade orientations. *Energy and Buildings*, 47(0), 139-150.
- Kostic, L. T., and Pavlovic, Z. T. (2012). Optimal position of flat plate reflectors of solar thermal collector. *Energy and Buildings*, 45(0), 161-168.
- Kothandaraman, C., and Subramanyan, S. (2006). *Heat and Mass Transfer Data Book* (Fifth ed.): New Age International.
- Kreider, J. F. (1975). Thermal Performance Analysis of the Stationary Reflector/Tracking Absorber (SRTA) Solar Concentrator. *Journal of Heat Transfer*, 97(3), 451-456.
- Kumar, A., and Goswami, N. (2010). *User's handbook on solar water heaters*.
- Kumar, S., and Mullick, S. C. (2012). Glass cover temperature and top heat loss coefficient of a single glazed flat plate collector with nearly vertical configuration. *Ain Shams Engineering Journal*, 3(3), 299-304.
- Lai, C.-m., Chen, R.-H., and Huang, C. S. (2012). Development and thermal performance of a wall heat collection prototype. *Building and Environment*, 57(0), 156-164.
- Li, D. H. W., Lam, T. N. T., and Chu, V. W. C. (2008). Relationship between the total solar radiation on tilted surfaces and the sunshine hours in Hong Kong. *Solar Energy*, 82(12), 1220-1228.
- Liping, W., and Hien, W. N. (2007). The impacts of ventilation strategies and facade on indoor thermal environment for naturally ventilated residential buildings in Singapore. *Building and Environment*, 42(12), 4006-4015.
- Liu, M., Wittchen, K. B., Heiselberg, P. K., and Winther, F. V. (2013). Development of a simplified and dynamic method for double glazing façade with night insulation and validated by full-scale façade element. *Energy and Buildings*, 58(0), 163-171.

- Loutzenhiser, P. G., Manz, H., Felsmann, C., Strachan, P. A., Frank, T., and Maxwell, G. M. (2007). Empirical validation of models to compute solar irradiance on inclined surfaces for building energy simulation. *Solar Energy*, 81(2), 254-267.
- Lubitz, W. D. (2011). Effect of manual tilt adjustments on incident irradiance on fixed and tracking solar panels. *Applied Energy*, 88(5), 1710-1719.
- Mammoli, A., Vorobieff, P., Barsun, H., Burnett, R., and Fisher, D. (2010). Energetic, economic and environmental performance of a solar-thermal-assisted HVAC system. *Energy and Buildings*, 42(9), 1524-1535.
- Mandalaki, M., Zervas, K., Tsoutsos, T., and Vazakas, A. (2012). Assessment of fixed shading devices with integrated PV for efficient energy use. *Solar Energy*, 86(9), 2561-2575.
- Mansour, M. K. (2013). Thermal analysis of novel minichannel-based solar flat-plate collector. *Energy*, 60, 333-343.
- MATLAB Documentation. (2016). Retrieved 01 November, 2016, from <https://www.mathworks.com/help/matlab/index.html>
- Matuska, T., and Sourek, B. (2006). Facade solar collectors. *Solar Energy*, 80(11), 1443-1452.
- McAdams, W. H. (1954). *Heat transmission* (Third ed.): McGraw-Hill.
- Medved, S., Arkar, C., and Cerne, B. (2003). A large-panel unglazed roof-integrated liquid solar collector - energy and economic evaluation. *Solar Energy*, 75(6), 455-467.
- Mekhilef, S., Safari, A., Mustaffa, W. E. S., Saidur, R., Omar, R., and Younis, M. A. A. (2012). Solar energy in Malaysia: Current state and prospects. *Renewable and Sustainable Energy Reviews*, 16(1), 386-396.
- Meng, Q., and Zhang, L. (2006). The rooftop shading system of the Humanities Building at SCUT. *Energy and Buildings*, 38(11), 1356-1359.
- MISOL International. (2012). Installation and Operating Manual: SR868C8/SR868C8Q Solar Controller MISOL International E-Commerce.
- Moghadam, H., Tabrizi, F. F., and Sharak, A. Z. (2011). Optimization of solar flat collector inclination. *Desalination*, 265(1-3), 107-111.
- Mondol, J. D., Smyth, M., and Zacharopoulos, A. (2011). Experimental characterisation of a novel heat exchanger for a solar hot water application under indoor and outdoor conditions. *Renewable Energy*, 36(6), 1766-1779.
- Morrison, G. L., and Gilliaert, D. (1992). Unglazed Solar Collector Performance Characteristics. *Journal of Solar Energy Engineering*, 114(3), 194-200.

- Morrissey, J., Moore, T., and Horne, R. E. (2011). Affordable passive solar design in a temperate climate: An experiment in residential building orientation. *Renewable Energy*, 36(2), 568-577.
- Mosallat, F., Elmekawy, T., Friesen, D. L., Molinski, T., Loney, S., and Bibeau, E. L. (2013). Modeling, Simulation and Control of Flat Panel Solar Collectors with Thermal Storage for Heating and Cooling Applications. *Procedia Computer Science*, 19, 686-693.
- Motte, F., Notton, G., Cristofari, C., and Canaletti, J.-L. (2013a). A building integrated solar collector: Performances characterization and first stage of numerical calculation. *Renewable Energy*, 49(0), 1-5.
- Motte, F., Notton, G., Cristofari, C., and Canaletti, J.-L. (2013b). Design and modelling of a new patented thermal solar collector with high building integration. *Applied Energy*, 102(0), 631-639.
- Munari, P. M., and Roecker, C. (2007). Towards an improved architectural quality of building integrated solar thermal systems (BIST). *Solar Energy*, 81(9), 1104-1116.
- Munson, B. R., Young, D. F., and Okiishi, T. H. (2006). *Fundamentals of Fluid Mechanics* (Fifth ed.): John Wiley & Sons.
- Nayak, J. K., Sukhatme, S. P., Limaye, R. G., and Bopshetty, S. V. (1989). Performance studies on solar concrete collectors. *Solar Energy*, 42(1), 45-56.
- Ng, K. M. (2011). *Geometrical Characteristics of Fixed Mirror Distributed Focus Solar Concentrator, Serdang, Malaysia*. Universiti Putra Malaysia.
- Ng, K. M., Adam, N. M., Azmi, B. Z., Wahab, M. A., and Sulaiman, M. Y. (2012). Field Study of Solar Bowl Under Malaysian Tropical Climate. *WSEAS TRANSACTIONS on Environment and Development*, 8(2), 48 - 59.
- Nieuwoudt, M. N., and Mathews, E. H. (2005). A mobile solar water heater for rural housing in Southern Africa. *Building and Environment*, 40(9), 1217-1234.
- Nijegorodov, N., Devan, K. R. S., Jain, P. K., and Carlsson, S. (1994). Atmospheric transmittance models and an analytical method to predict the optimum slope of an absorber plate, variously oriented at any latitude. *Renewable Energy*, 4(5), 529-543.
- Nijmeh, S., and Mamlook, R. (2000). Testing of two models for computing global solar radiation on tilted surfaces. *Renewable Energy*, 20(1), 75-81.
- Notton, G., Motte, F., Cristofari, C., and Canaletti, J.-L. (2014). Performances and numerical optimization of a novel thermal solar collector for residential building. *Renewable and Sustainable Energy Reviews*, 33(0), 60-73.

- Oh, T. H., Pang, S. Y., and Chua, S. C. (2010). Energy policy and alternative energy in Malaysia: Issues and challenges for sustainable growth. *Renewable and Sustainable Energy Reviews*, 14(4), 1241-1252.
- Othman, M. Y. H., Sopian, K., Yatim, B., and Dalimin, M. N. (1993). Diurnal pattern of global solar radiation in the tropics: a case study in Malaysia. *Renewable Energy*, 3(6-7), 741-745.
- Pacheco, R., Ordonez, J., and Martinez, G. (2012). Energy efficient design of building: A review. *Renewable and Sustainable Energy Reviews*, 16(6), 3559-3573.
- Palmero-Marrero, A. I., and Oliveira, A. C. (2004). Testing of an integrated solar louvre collector. *International Journal of Ambient Energy*, 25(4), 171-176.
- Palmero-Marrero, A. I., and Oliveira, A. C. (2006). Evaluation of a solar thermal system using building louvre shading devices. *Solar Energy*, 80(5), 545-554.
- Palmero-Marrero, A. I., and Oliveira, A. C. (2007). Evaluation of a solar cooling system with louvre thermal collectors. *International Journal of Low-Carbon Technologies*, 2(2), 99-108.
- Palmero-Marrero, A. I., and Oliveira, A. C. (2008). Evaluation of a solar louvre collector system for building heating and cooling. *International Journal of Ambient Energy*, 29(2), 59-64.
- Palmero-Marrero, A. I., and Oliveira, A. C. (2010). Effect of louver shading devices on building energy requirements. *Applied Energy*, 87(6), 2040-2049.
- Panchal, H., and Shah, P. (2012). Investigation on solar stills having floating plates. *International Journal of Energy and Environmental Engineering*, 3, 8.
- Pandey, C. K., and Katiyar, A. K. (2009). A note on diffuse solar radiation on a tilted surface. *Energy*, 34(11), 1764-1769.
- Paramita, B., and Koerniawan, M. D. (2013). Solar Envelope Assessment in Tropical Region Building Case Study: Vertical Settlement in Bandung, Indonesia. *Procedia Environmental Sciences*, 17(0), 757-766.
- Pardhi, C., and Bhagoria, J. (2013). Development and performance evaluation of mixed-mode solar dryer with forced convection. *International Journal of Energy and Environmental Engineering*, 4, 23.
- Pasut, W., and De Carli, M. (2012). Evaluation of various CFD modelling strategies in predicting airflow and temperature in a naturally ventilated double skin facade. *Applied Thermal Engineering*, 37(0), 267-274.
- Pathak, M. J. M., Sanders, P. G., and Pearce, J. M. (2014). Optimizing limited solar roof access by exergy analysis of solar thermal, photovoltaic, and hybrid photovoltaic thermal systems. *Applied Energy*, 120(0), 115-124.

- Rabah, K. V. O., and Mito, C. O. (2003). Pre-design guidelines for passive solar architectural buildings in Kenya. *International Journal of Sustainable Energy*, 23(3), 83-119.
- Raeissi, S., and Taheri, M. (1998). Optimum overhang dimensions for energy saving. *Building and Environment*, 33(5), 293-302.
- Rahman, I. A., and Dewsbury, J. (2007). Selection of typical weather data (test reference years) for Subang, Malaysia. *Building and Environment*, 42(10), 3636-3641.
- Ralegaonkar, R. V., and Gupta, R. (2005). Design development of a static sunshade using small scale modeling technique. *Renewable Energy*, 30(6), 867-880.
- Ramirez-Stefanou, M., Mallick, T., Smyth, M., Mondol, J. D., Zacharopoulos, A., and Hyde, T. J. (2011). Characterisation of a Line-Axis Solar Thermal Collector for Building Facade Integration. In R. Howlett, L. C. Jain & S. H. Lee (Eds.), *Sustainability in Energy and Buildings* (Vol. 7, pp. 277-287): Springer Berlin Heidelberg.
- Rathakrishnan, E. (2012). *Elements of Heat Transfer*: Taylor & Francis.
- RENSON®. (2013). Sun Protection: Horizontal [Electronic Version], 40. Retrieved 16 March 2014, from www.renson.eu
- Rodriguez-Sanchez, D., Belmonte, J. F., Izquierdo-Barrientos, M. A., Molina, A. E., Rosengarten, G., and Almendros-Ibanez, J. A. (2014). Solar energy captured by a curved collector designed for architectural integration. *Applied Energy*, 116(0), 66-75.
- Roecker, C., Munari-Probst, M., Chambrier, E., Schueler, A., and Scartezzini, J.-L. (2009). Facade Integration of Solar Thermal Collectors: A Breakthrough. In D. Y. Goswami & Y. Zhao (Eds.), *Proceedings of ISES World Congress 2007* (Vol. I - Vol. V) (pp. 337-341): Springer Berlin Heidelberg.
- Rohsenow, W. M., Hartnett, J. P., and Ganic, E. N. (1985). *Handbook of heat transfer fundamentals* (Second ed.): McGraw-Hill.
- Rojas, D., Beermann, J., Klein, S. A., and Reindl, D. T. (2008). Thermal performance testing of flat-plate collectors. *Solar Energy*, 82(8), 746-757.
- Roohollahi, E., Mehrabian, M. A., and Abdolzadeh, M. (2013). Prediction of solar energy gain on 3-D geometries. *Energy and Buildings*, 62(0), 315-322.
- Roonprasang, N., Namprakai, P., and Pratinthong, N. (2008). Experimental studies of a new solar water heater system using a solar water pump. *Energy*, 33(4), 639-646.

- Saelens, D., Parys, W., Roofthoof, J., and de la Torre, A. T. (2013). Assessment of approaches for modeling louver shading devices in building energy simulation programs. *Energy and Buildings*, 60(0), 286-297.
- Sakhrieh, A., and Al-Ghandoor, A. (2013). Experimental investigation of the performance of five types of solar collectors. *Energy Conversion and Management*, 65, 715-720.
- Salem, T., and Michel, P. (2009). Experimental Study of Active Solar Thermal Collectors Integrated in Building Facade. In D. Y. Goswami & Y. Zhao (Eds.), *Proceedings of ISES World Congress 2007 (Vol. I - Vol. V)* (pp. 332-336): Springer Berlin Heidelberg.
- Samdarshi, S. K., and Mullick, S. C. (1994). Generalized Analytical Equation for the Top Heat Loss Factor of a Flat-Plate Solar Collector With N Glass Covers. *Journal of Solar Energy Engineering*, 116(1), 43-46.
- Sarachitti, R., Chotetanorm, C., Lertsatitthanakorn, C., and Rungsiyopas, M. (2011). Thermal performance analysis and economic evaluation of roof-integrated solar concrete collector. *Energy and Buildings*, 43(6), 1403-1408.
- Saraf, G. R., and Hamad, F. A. W. (1988). Optimum tilt angle for a flat plate solar collector. *Energy Conversion and Management*, 28(2), 185-191.
- Shamsuddin, A. H. (2012). Development of Renewable Energy in Malaysia-Strategic Initiatives for Carbon Reduction in the Power Generation Sector. *Procedia Engineering*, 49(0), 384-391.
- Shazly, J. H., Hafez, A. Z., El Shenawy, E. T., and Eteiba, M. B. (2014). Simulation, design and thermal analysis of a solar Stirling engine using MATLAB. *Energy Conversion and Management*, 79, 626-639.
- Shen, C., He, Y.-L., Liu, Y.-W., and Tao, W.-Q. (2008). Modelling and simulation of solar radiation data processing with Simulink. *Simulation Modelling Practice and Theory*, 16(7), 721-735.
- Shen, H., and Tzempelikos, A. (2012). Daylighting and energy analysis of private offices with automated interior roller shades. *Solar Energy*, 86(2), 681-704.
- Shi, J., Su, W., Zhu, M., Chen, H., Pan, Y., Wan, S., and Wang, Y. (2013). Solar water heating system integrated design in high-rise apartment in China. *Energy and Buildings*, 58(0), 19-26.
- Shojaeizadeh, E., Veysi, F., Yousefi, T., and Davodi, F. (2014). An experimental investigation on the efficiency of a Flat-plate solar collector with binary working fluid: A case study of propylene glycol (PG)-water. *Experimental Thermal and Fluid Science*, 53, 218-226.

- Siddiqui, R., and Bajpai, U. (2012). Correlation between thicknesses of dust collected on photovoltaic module and difference in efficiencies in composite climate. *International Journal of Energy and Environmental Engineering*, 3(1), 26.
- SIRIM. (2016). The Malaysian Standard Time. Retrieved 19 April, 2016, from <http://mst.sirim.my/>
- Sopian, K., and Othman, M. Y. H. (1992). Estimates of monthly average daily global solar radiation in Malaysia. *Renewable Energy*, 2(3), 319-325.
- Sopian, K., Syahri, M., Abdullah, S., Othman, M. Y., and Yatim, B. (2004). Performance of a non-metallic unglazed solar water heater with integrated storage system. *Renewable Energy*, 29(9), 1421-1430.
- Souliotis, M., Chemisana, D., Caouris, Y. G., and Tripanagnostopoulos, Y. (2013). Experimental study of integrated collector storage solar water heaters. *Renewable Energy*, 50, 1083-1094.
- Stojanovic, B., Hallberg, D., and Akander, J. (2010). A steady state thermal duct model derived by fin-theory approach and applied on an unglazed solar collector. *Solar Energy*, 84(10), 1838-1851.
- Subiantoro, A., and Ooi, K. T. (2013). Analytical models for the computation and optimization of single and double glazing flat plate solar collectors with normal and small air gap spacing. *Applied Energy*, 104, 392-399.
- Sulaiman, M. Y., Hlaing Oo, W. M., Abd Wahab, M., and Zakaria, A. (1999). Application of beta distribution model to Malaysian sunshine data. *Renewable Energy*, 18(4), 573-579.
- Sulaiman, M. Y., Hlaing oo, W. M., Wahab, M. A., and Sulaiman, Z. A. (1997). Analysis of residuals in daily solar radiation time series. *Renewable Energy*, 11(1), 97-105.
- Sultana, T., Morrison, G. L., and Rosengarten, G. (2012). Thermal performance of a novel rooftop solar micro-concentrating collector. *Solar Energy*, 86(7), 1992-2000.
- Sun, L. L., and Yang, H. X. (2010). Impacts of the shading-type building-integrated photovoltaic claddings on electricity generation and cooling load component through shaded windows. *Energy and Buildings*, 42(4), 455-460.
- Tagliafico, L. A., Scarpa, F., and De Rosa, M. (2014). Dynamic thermal models and CFD analysis for flat-plate thermal solar collectors - A review. *Renewable and Sustainable Energy Reviews*, 30(0), 526-537.
- Talebizadeh, P., Mehrabian, M. A., and Abdolzadeh, M. (2011). Prediction of the optimum slope and surface azimuth angles using the Genetic Algorithm. *Energy and Buildings*, 43(11), 2998-3005.

- Tang, R., Sun, Z., Li, Z., Yu, Y., Zhong, H., and Xia, C. (2008). Experimental investigation on thermal performance of flat plate collectors at night. *Energy Conversion and Management*, 49(10), 2642-2646.
- Tang, R., Xia, C., Fan, Y., Li, Z., and Zhong, H. (2009). Progress in Building Integration of Solar Systems in Yunnan, China. In D. Y. Goswami & Y. Zhao (Eds.), *Proceedings of ISES World Congress 2007 (Vol. I - Vol. V)* (pp. 361-365): Springer Berlin Heidelberg.
- Techno-Solis. (2011). *Installation, Operation, Maintenance Manual - Direct-D-System Manual*.
- Tenaga Nasional Berhad. (2017). Electricity Tariff Schedule [Electronic Version]. Retrieved 16 April 2017, from https://www.tnb.com.my/assets/files/Tariff_Rate_Final_01.Jan.2014.pdf
- The Eppley Laboratory Inc. (2006). Black and White Pyranometer, Model 8-48 Instruction Sheet.
- Tiris, M., and Tiris, C. (1998). Optimum collector slope and model evaluation: Case study for Gebze, Turkey. *Energy Conversion and Management*, 39(3/4), 167-172.
- Tong, J. C. K., Sparrow, E. M., and Abraham, J. P. (2009). Geometric strategies for attainment of identical outflows through all of the exit ports of a distribution manifold in a manifold system. *Applied Thermal Engineering*, 29(17-18), 3552-3560.
- Tripanagnostopoulos, Y., Souliotis, M., and Nousia, T. (2000). Solar collectors with colored absorbers. *Solar Energy*, 68(4), 343-356.
- Tyagi, V. V., Buddhi, D., Kothari, R., and Tyagi, S. K. (2012). Phase change material (PCM) based thermal management system for cool energy storage application in building: An experimental study. *Energy and Buildings*, 51(0), 248-254.
- Tzempelikos, A., and Athienitis, A. K. (2007). The impact of shading design and control on building cooling and lighting demand. *Solar Energy*, 81(3), 369-382.
- Tzempelikos, A., Athienitis, A. K., and Karava, P. (2007). Simulation of facade and envelope design options for a new institutional building. *Solar Energy*, 81(9), 1088-1103.
- Vejen, N. K., Furbo, S., and Shah, L. J. (2004). Development of 12.5 m² solar collector panel for solar heating plants. *Solar Energy Materials and Solar Cells*, 84(1-4), 205-223.

- Visa, I., Duta, A., Comsit, M., Moldovan, M., Ciobanu, D., Saulescu, R., and Burduhos, B. (2015). Design and experimental optimisation of a novel flat plate solar thermal collector with trapezoidal shape for facades integration. *Applied Thermal Engineering*, 90, 432-443.
- Wagner, W., and Kretzschmar, H.-J. (2008). *International Steam Tables - Properties of Water and Steam based on the Industrial Formulation IAPWS-IF97* (Second ed.). Berlin, Heidelberg: Springer Berlin Heidelberg.
- Wagner, W., Kretzschmar, H.-J., Span, R., and Krauss, R. (2010). D2 Properties of Selected Important Pure Substances. In *VDI Heat Atlas* (pp. 153-300). Berlin, Heidelberg: Springer Berlin Heidelberg.
- Wan Nik, W. B., Ibrahim, M. Z., Samo, K. B., and Muzathik, A. M. (2012). Monthly mean hourly global solar radiation estimation. *Solar Energy*, 86(1), 379-387.
- Wang, X. A., and Wu, L. G. (1990). Analysis and performance of flat-plate solar collector arrays. *Solar Energy*, 45(2), 71-78.
- Wang, Z., Duan, Z., Zhao, X., and Chen, M. (2012). Dynamic performance of a facade-based solar loop heat pipe water heating system. *Solar Energy*, 86(5), 1632-1647.
- Xinjian, X., Lei, Y., Xiaosong, Z., and Donggen, P. (2009). Review on the Development of Flat-Plate Solar Collector and its Building-Integrated Designing. In D. Y. Goswami & Y. Zhao (Eds.), *Proceedings of ISES World Congress 2007 (Vol. I - Vol. V): Solar Energy and Human Settlement* (pp. 623-626). Berlin, Heidelberg: Springer Berlin Heidelberg.
- Xuan, D., Yajing, H., and Jiang, H. (2012, 21-23 April 2012). *The integrated design of SWH systems in high-rise buildings for hot-summer and warm-winter climates: Analysis of heat-collecting performanc of the integrated solar system*. Paper presented at the 2012 2nd International Conference on Consumer Electronics, Communications and Networks (CECNet).
- Yadav, A. K., and Chandel, S. S. (2013). Tilt angle optimization to maximize incident solar radiation: A review. *Renewable and Sustainable Energy Reviews*, 23(0), 503-513.
- Yang, Y., Wang, Q., Xiu, D., Zhao, Z., and Sun, Q. (2013). A building integrated solar collector: All-ceramic solar collector. *Energy and Buildings*, 62(0), 15-17.
- Yener, A. K. (1998). A method of obtaining visual comfort using fixed shading devices in rooms. *Building and Environment*, 34(3), 285-291.
- Yohanis, Y. G., and Norton, B. (2002). Useful solar heat gains in multi-zone non-domestic buildings as a function of orientation and thermal time constant. *Renewable Energy*, 27(1), 87-95.

- Zahedi, H. R., Adam, N. M., Sapuan, S. M., and Ahmad, M. M. H. M. (2007). Effect of storage tank geometry on performance of solar water heater. *Journal of Scientific & Industrial Research*, 66(2), 146-151.
- Zambolin, E., and Del Col, D. (2010). Experimental analysis of thermal performance of flat plate and evacuated tube solar collectors in stationary standard and daily conditions. *Solar Energy*, 84(8), 1382-1396.
- Zamzam, M. J., Kheng, W. H., and Kamaruddin, N. (2003). Greener energy solutions for a sustainable future: issues and challenges for Malaysia. *Energy Policy*, 31(11), 1061-1072.
- Zhai, X. Q., Wang, R. Z., Dai, Y. J., Wu, J. Y., and Ma, Q. (2008). Experience on integration of solar thermal technologies with green buildings. *Renewable Energy*, 33(8), 1904-1910.
- Zhang, W., Lin, K., Yuasa, R., and Kato, S. (2015). Experimental and Computational Study for Household Equipment System in a Smart House with Solar Collectors. *Energy Procedia*, 78, 3428-3433.
- Zhang, X., You, S., Xu, W., Wang, M., He, T., and Zheng, X. (2014). Experimental investigation of the higher coefficient of thermal performance for water-in-glass evacuated tube solar water heaters in China. *Energy Conversion and Management*, 78, 386-392.



© COPYRIGHT UPM