



UNIVERSITI PUTRA MALAYSIA

***DEVELOPMENT OF A HYBRID METHOD BY DATA ENVELOPMENT
ANALYSIS AND ANALYTIC NETWORK PROCESS FOR PROJECT
SELECTION***

MAJID MOJAHED

FK 2014 91



**DEVELOPMENT OF A HYBRID METHOD BY DATA ENVELOPMENT
ANALYSIS AND ANALYTIC NETWORK PROCESS FOR PROJECT
SELECTION**

By

MAJID MOJAHED

**Thesis submitted to the School of Graduate Studies Universiti Putra Malaysia,
in fulfillment of the requirements for the degree of Doctor of Philosophy**

March 2014

COPYRIGHT

All material contained within the thesis, including without limitation text, logos, icons, photographs and all other artwork, is copyright material of Universiti Putra Malaysia unless otherwise stated. Use may be made of any material contained within the thesis for non-commercial purposes from the copyright holder. Commercial use of material may only be made with the express, prior, written permission of Universiti Putra Malaysia.

Copyright © Universiti Putra Malaysia



DEDICATION

This thesis is dedicated to my father, Hossein, who passed away in 1981 and to my mother whose love and encouragement are the most wonderful of the many blessings that God has given to me. Moreover I would like to dedicate it to my wife **Laleh** and my son **Kasra**, who are my unfailing source of love. Your patience, tolerance and understanding are immeasurable.



Abstract of thesis presented to the Senate of Universiti Putra Malaysia in fulfillment of the requirement for Degree of Doctor of Philosophy

DEVELOPMENT OF A HYBRID METHOD BY DATA ENVELOPMENT ANALYSIS AND ANALYTIC NETWORK PROCESS FOR PROJECT SELECTION

By

MAJID MOJAHED

March 2014

Chair: Professor Rosnah bt. Mohd. Yusuff, PhD
Faculty: Engineering

This research focuses on developing a model that can be used to rank construction projects and select the profitable one. This model will result from the integration of a decision tool called the Analytic Network Process and a data analysis model called Data Envelopment Analysis.

Due to scarce resources, contractors cannot undertake all projects simultaneously. Because of the wide variety of criteria, they are always faced with difficulties in selecting projects, so a proper scientific method is necessary to aid contractors for achieving more profit. Data Envelopment Analysis (DEA) is a very powerful benchmarking technique that determines a Decision Making Units (DMUs) as efficient or inefficient units. Moreover, it can increase the performance of inefficient units by reducing the amount of input variables and increasing the output ones. A hybrid method of decision making has been developed using Analytic Network Process method (ANP) with DEA by considering the relationship between criteria and alternatives based on network system of elements for solving in Project Selection problems. The objectives of this research are identifying and determining the weights of significant criteria in order to rank construction projects based on network system of elements and also developing prototype software as a tool.

In this study, two kinds of questionnaires have been applied. The first questionnaire was used to identify the relationship between elements and the second questionnaire specified the weight of 27 criteria. 'Political impact in area' was introduced as an important criterion for project selection. Both questionnaires were filled up by 26 contractors (whole group of contractors in Telecommunication Company of North Khorasan) who are experts in 25 selected projects for Telecommunication Company. After classifying the criteria into corresponding groups based on their characteristics,

the weight of each group was identified. The output of ANP method was modified to serve as input for DEA method. To identify project selection criteria and the number of groups, voting method was used. The inputs of Cross Efficiency Matrix were provided by inputs and outputs of DEA method and finally, this hybrid method represents the project number 3 'Building construction of call Centre in Jajarm' was selected as the profitable project and it was followed by project number 5' Building construction of call Centre in Farooj' and project number 4'Building construction of call Centre in Esfaraeen' and so on. To show how much of this prioritization is close to reality, some ordinal numbers (rank of projects) were gathered based on each contractor's viewpoint.

Based on Cohen's scales, the spearman's rank correlation of 0.586 represents strong relationship between the results of the ranked projects by hybrid method and contractor's viewpoints. The application of this hybrid method is not limited only to selecting and ranking projects. It is also applicable to any kind of decision making in the selection process. Prototype software is developed in the form of the MATLAB to help users in selecting and ranking projects. Even users without any knowledge of the applications like Super Decision and LINDO can solve these kinds of selection problems.

Abstrak tesis yang dikemukakan kepada Senat Universiti Putra Malaysia sebagai memenuhi keperluan untuk Ijazah Doktor Falsafah

**PEMBNGUNAN KAEDAH HIBRID MELALUI ANALISIS RANGKUMAN
DATA DAN PROSES RANGKAIAN ANALITIK UNTUK PEMILIHAN
PROJEK**

Oleh

MAJID MOJAHED

Mac 2014

Pengerusi: Professor Rosnah bt. Mohd. Yusuff, PhD
Faculti: Kejuruteraan

Sehubungan dengan kesukaran mendapatkan sumber-sumber, kontraktor-kontraktor tidak boleh menjalankan semua projek secara serentak. Oleh kerana terdapat pelbagai kriteria, kontraktor-kontaktor ini selalu berhadapan dengan pelbagai kesukaran dalam pemilihan projek-projek, jadi kaedah saintifik yang khas adalah diperlukan untuk membantu kontraktor-kontraktor untuk mencapai keuntungan yang lebih banyak. Kaedah-kaedah khas telah digunakan dalam pemilihan projek lapangan tetapi Analisis Hierarki Proses (AHP) hanya boleh menyusun kedudukan projek-projek dalam sistem hirarki dan kaedah-kaedah lain tidak diaplikasikan untuk membuat keputusan dengan sebab dan maklum balas.

Data Envelopment Analysis (DEA) ialah teknik yang sangat berkesan yang menentukan kecekapan atau ketidakcekapan unit Decision Making Units (DMUs). Lebih-lebih lagi ia boleh meningkatkan prestasi unit-unit ketidakcekapan dengan mengurangkan jumlah input pembolehubah dan meningkatkan output. Menggunakan kaedah ANP dengan keadah DEA boleh memberikan penilaian yang lebih realistik melalui penentuan berat elemen-elemen dengan mempertimbangkan persekitaran jaringan perhubungan antara mereka.

Dalam kajian ini, dua jenis soal selidik telah digunakan. Soal selidik yang pertama digunakan untuk mengenal pasti hubungan antara elemen-elemen dan soal selidik kedua khusus untuk berat 27 kriteria tersebut. 'Kesan politik dalam kawasan' telah diperkenalkan sebagai kriteria yang penting untuk pemilihan projek. Kedua- dua soal selidik telah diisi oleh 26 orang kontraktor yang mahir dalam 25 projek yang terpilih untuk Syarikat Telekomunikasi. Selepas mengklasifikasikan kriteria tersebut kepada kumpulan yang berkaitan berdasarkan kepada ciri-ciri masing-masing, berat setiap kumpulan telah dikenalpasti. Output kepada kaedah ANP telah diperbaiki untuk menjadi

input untuk kaedah DEA. Untuk mengenal pasti kriteria pemilihan projek dan bilangan kumpulan, kaedah mengundi telah digunakan. Input untuk Cross Efficiency Matrix telah disediakan oleh input dan output kaedah DEA dan akhirnya kaedah hybrid ini mewakili projek nombor 3 'Pembinaan bangunan Pusat Panggilan dengan Jajarm' telah dipilih sebagai projek yang menguntungkan dan ia diikuti oleh projek nombor di Farooj 'Pembinaan bangunan Pusat Panggilan' dan projek nombor 4' Pembinaan bangunan Pusat Panggilan dengan Esfaraeen' dan seterusnya. Untuk membuktikan berapa banyak keutamaan ini hampir kepada realiti, beberapa nombor ordinal (kedudukan projek) telah dikumpulkan berdasarkan kepada setiap pandangan kontraktor.

Korelasi kedudukan Spearman ialah 0.586 dan berdasarkan skala Cohens, dari pandangan kontraktor ini merupakan hubungan yang stabil di antara keputusan kedudukan projek yang telah disenaraikan oleh kaedah hybrid. Penggunaan kaedah hybrid ini bukan sahaja berkaitan dengan lokasi khas, memilih dan menyusun kedudukan projek, malahan juga digunakan untuk apa-apa jenis membuat keputusan dalam proses pemilihan. Perisian prototaip dibangunkan dalam bentuk MATLAB untuk membantu pengguna dalam memilih dan menyusun projek. Pengguna yang tidak didedahkan dengan sebarang pengetahuan tentang Perisian seperti Super Keputusan dan lindo juga boleh menyelesaikan pelbagai masalah pemilihan ini.

ACKNOWLEDGEMENTS

I would like to thank my supervisor Prof. Dr. Rosnah Bt. Mohd. Yusuff for her guidance and supervision throughout my studies. I am grateful for her inspirational motivation, valuable suggestions and feedback that encouraged me on my research work. I would also like to express my appreciation of my committee members, Prof. Ir. Abang Abdullah B. Abang Ali, Assoc. Prof. Dr. Mohd. Rizam, Abu Bakar and Assoc. Prof. Dr. Reza Farzipour Saen for providing valuable guidance and feedback for this thesis.

I am also very thankful to have such a great family. My brothers are the greatest source of joy in my life with colorful personalities. Without their support it would not have been possible. No words could ever convey the depth of my gratitude and love to each of them.



This thesis was submitted to the Senate of Universiti Putra Malaysia and has been accepted as fulfillment of the requirement for the degree of Doctor of Philosophy. The members of the Supervisory Committee were as follows:

Rosnah binti Mohd. Yusuff, PhD

Professor
Faculty of Engineering
Universiti Putra Malaysia
(Chairman)

Dato' Abang Abdullah b. Abang Ali, PhD, IR

Professor
Faculty of Engineering
Universiti Putra Malaysia
(Member)

Mohd Rizam b. Abu Bakar, PhD

Associate Professor
Faculty of Mathematical Research
Universiti Putra Malaysia
(Member)

Reza Farzipour Saen, PhD

Associate Professor
Faculty of Industrial Management
Azad University of Iran
(External Member)

BUJANG BIN KIM HUAT, PhD

Professor and Dean
School of Graduate Studies
Universiti Putra Malaysia

Date: 19 September 2014

Declaration by graduate student

I hereby confirm that:

- this thesis is my original work;
- quotation, illustrations and citations have been duly referenced;
- this thesis has not been submitted previously or concurrently for any other degree at any other institutions;
- intellectual property from the thesis and copyright of thesis are fully-owned by Universiti Putra Malaysia, as according to the Universiti Putra Malaysia (Research) Rules 2012;
- written permission must be obtained from supervisor and the office of Deputy Vice Chancellor (Research and Innovation) before thesis is published (in the form of written, printed or in electronic form) including books, journals, modules, proceedings, popular writings, seminar papers, manuscripts, posters, reports, lecture notes, learning modules or any other materials as stated in the Universiti Putra Malaysia (Research) Rules 2012;
- there is no plagiarism or data falsification/fabrication in the thesis, and scholarly integrity is upheld as according to the Universiti Putra Malaysia (Graduate Studies) Rules 2003 (Revision 2012-2013) and the Universiti Putra Malaysia (Research) Rules 2012. The thesis has undergone plagiarism detection software.

Signature: _____

Date: _____

Name and Matric No.: _____

Declaration by Members of Supervisory Committee

This is to confirm that:

- the research conducted and the writing of this thesis was under our supervision;
- supervision responsibilities as stated in the universiti Putra Malaysia (Graduate studies) Rules 2003 (Revision 2012-2013) are adhered to.

Signature: _____

Name of
Chairman of
Supervisory
Committee: _____

Signature: _____

Name of
Member of
Supervisory
Committee: _____

Signature: _____

Name of
Member of
Supervisory
Committee: _____

Signature: _____

Name of
Member of
Supervisory
Committee: _____

TABLE OF CONTENTS

		Page
	ABSTRACT	I
	ABSTRAK	III
	ACKNOWLEDGEMENTS	v
	APPROVAL	vi
	DECLARATION	viii
	LIST OF TABLES	xiii
	LIST OF FIGURES	xiv
	LIST OF ABBREVIATIONS	xv
CHAPTER		
1	INTRODUCTION	
1.1	Introduction	I
1.2	Background of the Study	I
1.3	Problem Statement	4
1.4	Research Objectives	6
1.5	Knowledge Contribution	6
1.6	Scope and Limitations	6
1.7	Organization of the Thesis	7
2	LITERATURE REVIEW	
2.1	Introduction	8
2.2	Project selection	8
2.2.1	Project definition	8
2.2.2	Project evaluation and selection	8
2.3	Multi Criteria decision Making approach (MCDM)	15
2.3.1	The Technique for Order Performance by Similarity to Ideal Solution method (TOPSIS)	17
2.3.2	The Elimination Et Choice Expressing the Reality method (ELECTRE)	20
2.3.3	The Analytic Hierarchy Process method (AHP)	23
2.3.4	The Analytic Network Process method (ANP)	26
2.4	Data Envelopment Analysis method (DEA)	32
2.4.1	Mathematical fonnation	34
2.4.2	General fonn of DEA method	35
2.4.3	Cross Efficiency Matrix	36
2.4.4	Application issues in DEA method	38
2.5	Hybrid DEA-ANP background	39
2.6	Literature on project selection	43
3	METHODOLOGY	
3.1	Introduction	50
3.2	Research design	50

3.3	Research framework	51
3.3.1	Identifying construction project selection criteria	53
3.3.2	Specifying construction projects	53
3.3.3	Selecting relevant criteria and groups	53
3.3.4	Interdependency Checklist (first questionnaire)	53
3.3.5	Comparison matrix (second questionnaire)	53
3.3.6	Classifying criteria as positive and negative	54
3.3.7	Placing criteria into corresponding groups	55
3.3.8	Modifying the output of the ANP method	55
3.3.9	Implementation of the DEA method	56
3.3.10	Cross Efficiency Matrix	56
3.4	Software development	56
3.4.1	Phase one: Data preparation	58
3.4.2	Phase two: Program execution	59
3.4.3	Phase three: Report generation	60
3.5	Applying the techniques in Super Decision Software	61
3.5.1	Create clusters	61
3.5.2	Create elements inside the clusters	62
3.5.3	Create links between elements	63
3.5.4	Pairwise comparison	64
3.6	Research algorithm	65
3.7	Summary	67
4	RESULT AND DISCUSSION	
4.1	Introduction	68
4.2	Overview of hybrid method	68
4.3	The geographical position of the case study	68
4.4	Data collection process	69
4.4.1	Definition and structural list of criteria	69
4.4.2	Placing criteria into relevant groups	73
4.4.3	Structured list of essential projects	75
4.4.4	Applying interdependency checklist	76
4.4.5	Doing comparison matrices	82
4.4.6	Data entering	85
4.5	Data analysis process	85
4.5.1	Analyzing the results of ANP method	86
4.5.2	Analyzing the results of DEA method	95
4.5.3	Analyzing the Cross Efficiency Matrix	98
4.5.4	Validity and accuracy of the hybrid method	102
4.6	Discussion	106
4.7	Conclusion	107
5	CONCLUSIONS AND RECOMMENDATIONS	
5.1	Introduction	108
5.2	Conclusions of research objectives	108
5.2.1	Research objective one	108

5.2.2	Research objective two	109
5.2.3	Research objective three	109
5.2.4	General objective	109
5.3	Recommendation	110
5.4	Further study	110

REFERENCES/BIBLIOGRAPHY	111
APPENDICES	122
BIODATA OF STUDENT	140
LIST OF PUBLICATIONS	145



LIST OF TABLES

Table		Page
2-1	Advantages and disadvantages of four traditional methods	15
2-2	Saaty's 1-9 scales of pairwise comparisons	25
2-3	Average random consistency (RI)	25
2-4	The output of general DEA method	37
2-5	The output of ANP method	37
2-6	The Cross Efficiency Matrix	37
2-7	Presented criteria in construction projects (1/2)	47
2-8	Presented criteria in general projects	47
2-9	Presented criteria in construction projects (2/2)	48
2-10	Presented criteria in building projects	49
3-1	The interpretation of a correlation coefficient	67
4-1	Definition of criteria and their scores	70
4-2	To allocate criteria into corresponding groups by voting method	74
4-3	Definition of groups and their scores	75
4-4	List of considered projects	76
4-5	The data of Interdependency Checklist (1/5)	77
4-6	The data of Interdependency Checklist (2/5)	78
4-7	The data of Interdependency Checklist (3/5)	79
4-8	The data of Interdependency Checklist (4/5)	80
4-9	The data of Interdependency Checklist (5/5)	81
4-10	Inconsistency Index of compared criteria	84
4-11	Inconsistency Index of compared projects	85
4-12	The ranked criteria	87
4-13	The weight of groups	89
4-14	The normalized weight of groups	89
4-15	The ranked groups	90
4-16	The weighted groups based on each projects (1/3)	92
4-17	The weighted groups based on each projects (2/3)	93
4-18	The weighted groups based on each projects (3/3)	94
4-19	The input of DEA method	95
4-20	The result of DEA method	98
4-21	The result of Cross Efficiency Matrix (1/3)	99
4-22	The result of Cross Efficiency Matrix (2/3)	100
4-23	The result of Cross Efficiency Matrix (3/3)	101
4-24	The ranked projects by hybrid method	102
4-25	The ranked projects by contractors manually	103
4-26	The deducted numbers from 25	104
4-27	The ranked projects by contractors using overall ranking method	105
4-28	The Correlation Coefficient	105

LIST OF FIGURES

Figure		Page
1-1	Structure of MCDM approach	3
2-1	Abstract representation of a decision hierarchy	24
2-2	Advantages of AHP method on other methods	26
2-3	Feedback network in ANP method	27
2-4	Hierarchy and network	29
2-5	Advantages of ANP method on AHP method	32
2-6	Two inputs and one output case in DEA method	33
3-1	Research framework	52
3-2	Determining the weight of each group for each project	55
3-3	Software development process	58
3-4	New Cluster dialogue box	62
3-5	New Node dialogue box	63
3-6	Selection of the interdependent nodes	64
3-7	Node comparison box	65
3-8	Conceptual model	66
4-1	Comparison criteria with respect to 'A promising future'	83
4-2	Construction project selection network	86
4-3	Priority of the criteria	88
4-4	Comparison between the first six criteria and others	88
4-5	The value of the eight groups	90

CHAPTER ONE

INTRODUCTION

1.1 Introduction

This chapter introduces the background and basic ideas of this study. It starts by discussing the background of the study. It further discusses the problem statement as well as the objectives of the study. Then it goes through knowledge contribution of the research and scope and limitation and ends with organization of the thesis.

1.2 Background of the Study

Contractors are always faced with difficulties in selecting construction projects that offer return on investment. Because of lack of resources, they cannot start all projects simultaneously. Instead, they should choose the most doable projects, which not only maximize positive results but also minimize any negative results. This increases the need for relying on a set of collection criteria for ranking a number of projects (Cheng & Li, 2005). Those projects with most promising scores are given the highest priorities for undertaking. Badri et al. (2001), after directing a simple analysis, found that there are thirteen kinds of methods that are raised for IS project selection decision, including scoring, ranking, mathematical programming, fuzzy logic, and analytic hierarchy process (AHP). A review of recent published papers has identified another list of methods that have been developed to address project selection problems in the construction field (Cheng & Li, 2005). At the same time, the total number of criteria which a human is able to analyze is seven plus or minus two (Doyle & Green, 1994; Saaty, 2003). In addition, in some papers about project selection, authors show that without finding relationship between criteria, selection of the best project could not be found exactly (Jiang & Klein, 1999; Lee & Kim, 2000). Therefore, the main question is how to select and rank projects to achieve more profit. In order to maximize profit, a proper scientific method is necessary to aid contractors for ranking projects.

Data Envelopment Analysis (DEA) is a very powerful benchmarking technique that determines a Decision Making Units (DMUs) as efficient or inefficient units. Moreover, it can increase the performance of inefficient units by reducing the amount of input variables and increasing the output ones. This can be possible through creating a virtual unit and using reference sets for any inefficient unit (Dai & Kuosmanen, 2014). It is a mathematical method which develops an efficient frontier to provide an estimate of relative efficiency for each decision making unit (DMU) in the problem set (Çelebi & Bayraktar, 2008). The DMU's efficiency is shown as the ratio of the weighted sum of its outputs to the weighted sum of its inputs. In other words, to determine weights of DMU individually and optimally, an optimization problem should be solved (Womer et al., 2006). Finally, the DMUs will be placed into efficient and inefficient categories: the efficient, when the DMU lies on the frontier or surface and the inefficient will be otherwise. The frontier is a line that will connect all efficient DMU's. Therefore, the efficient DMU's cannot improve one of its input values without worsening the others.

Other DMUs cannot produce the identical outputs by consuming less inputs or consuming the identical inputs by producing more outputs (De Boer et al., 2001). Preparing efficiency scores and also finding reference units for inefficient DMUs is another job of DEA method. In the form of Input Oriented and Output Oriented, a DMU can be efficient by decreasing its inputs and increasing its outputs respectively (Joro, 1998). It is one of useful management and decision tool that was first developed by Charnes et al. (1978).

The principles of DEA date back to (Farrell, 1957). The recent series of discussions on this topic started in a seminal paper by (Charnes et al., 1978) as a means for comparing the efficiency of DMUs. Fractional linear measure of efficiency was changed into a Linear programming format (LP) in order to solve these kinds of problems easily (Adler et al., 2002). The traditional DEA models are not very appropriate for ranking DMUs because they simply classify the units into two groups: efficient and inefficient (Nazarko & Šaparauskas, 2014; Adler et al., 2002). The amount of alternatives efficiencies start from zero to one so the DMUs with the amount of one are called efficient and the others are called inefficient. Cross Efficiency Matrix method proposed by (Sexton et al., 1986), is a DEA extension tool that can be utilized to identify good overall performers and rank DMUs. Its main idea is to use DEA in a peer evaluation instead of a self-evaluation, but there are at least two advantages for cross-evaluation method (Wu et al., 2009). First, it provides a unique ordering among the DMUs. Second, it eliminates unrealistic weight schemes without requiring the elicitation of weight restrictions from application area experts. Therefore, the cross evaluation method is widely used for ranking the performance of DMUs (Wu et al., 2008).

The applications of DEA method are in many different areas. Efficiency Evaluations of Nursing Homes (Sexton et al., 1986), Selection of a Flexible Manufacturing System (Shang & Sueyoshi, 1995), Justification of Advanced Manufacturing Technology (Talluri & Paul Yoon, 2000), Preference Voting and Ranking (Green et al., 1996) and some other ranking with Cross Efficiency (Jahanshahloo et al., 2011; Wu et al., 2009; F. Yang et al., 2012; Zerafat Angiz et al., 2012). Currently, among a variety of project selection techniques, one of the most effective is Multi Criteria Decision Making in which contractors or decision makers set a list of criteria which are important and evaluate the potential projects against these criteria.

The Multi Criteria Decision Making (MCDM) prepares an effective frame for comparison based on the assessment of multiple conflict criteria and it is called one of the fastest growing areas of operational research. It has been shown as the most popular branch of decision making (García et al., 2014; Triantaphyllou, 2000). In the literature review, there are some methods in MCDM approach that are available with different ways to categorize them (Feizizadeh et al., 2014). Deterministic, Stochastic and Fuzzy Methods are some of them. Another way of categorizing MCDM is based on the number of decision makers involved in the decision process. To become more familiar with MCDM approach, the Taxonomy of this method has been shown in Figure 1-1, as it was presented by (Chen et al., 1992)(Hwang, 1987).

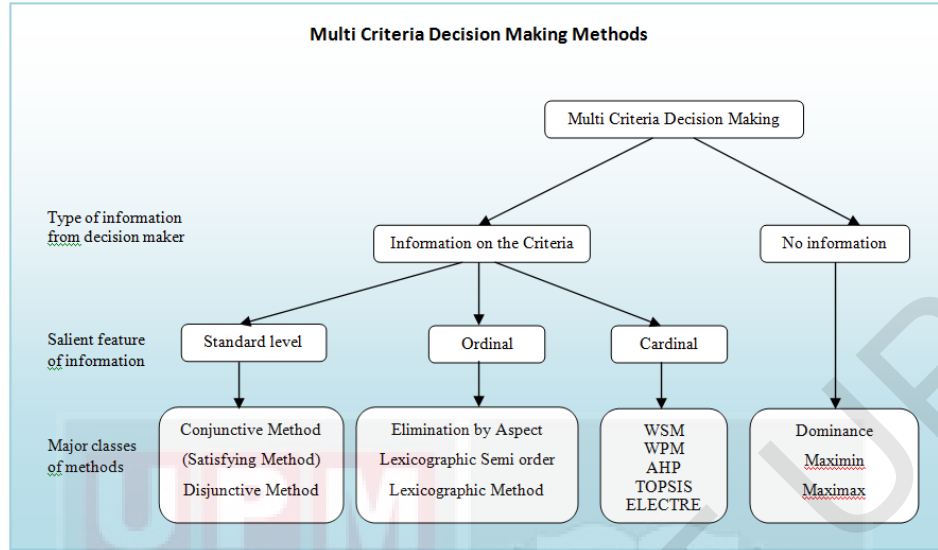


Figure 1-1: Structure of MCDM approach

In Figure 1-1, there are five methods that could be applied in this research in order to solve some defects in traditional DEA. Each method has its own advantages. (These methods have some advantages over each other that should be compared). The best method is a method which can solve more defects using DEA method. In this figure, the Weighted Sum Model (WSM), the Weighted Product Model (WPM), Analytic Hierarchy Process (AHP), Technique for Order-Preference by Similarity to Ideal Solution (TOPSIS) and Elimination Et Choice Translating Reality (ELECTRE) were considered as methods of the MCDM approach. After comparing these methods in order to select the efficient one for helping DEA, researchers found a new method. Analytic Network Process (ANP) was developed from the AHP by Saaty (1996) which creates a better understanding of the complex relationships among the elements in decision making and at the same time it will improve the reliability of decision making (Habtamu et al., 2013; Jharkharia & Shankar, 2007). It was introduced by Saaty and he found later that many complex decision making problems can be solved by an effective tool such as ANP.

All decision problems that were solved with AHP could be done by ANP. In addition, ANP is capable of solving more complex problems such as interaction and feedback among different elements in decision problems (Saaty & Vargas, 2006). In other words, ANP provides a solution for problems which cannot be structured hierarchically. Therefore, a diagram (that is) called a network will solve many complex problems (Saaty, 1986). To start the MCDM approach, some criteria and alternatives are required. Criteria or factors can be positive or negative. For applying the methods of this approach identifying essential criteria is needed. However, alternatives must be ranked or selected by this approach. In the next paragraph, for better understanding, the project has been described as a kind of alternative and also a contractor will be the decision maker.

1.3 Problem Statement

Construction projects deal with many unique features, including long period, complicated processes and financial intensity (Cheng & Li, 2005; Zou et al., 2007). Contractors cannot consider all projects concurrently and often confront difficulties in selecting the construction projects, because of limited resources. The most viable projects have to be selected to maximize positive outcomes (e.g., profits, reputation, etc.) and minimize any negative results (e.g., technical deficiency, environmental harm, etc.). This raises the need for relying on a set of selection criteria for prioritizing a number of projects (Ebrahimnejad et al., 2012). Therefore, the problem of selecting and ranking projects is a multi-criteria selection problem which calls for advanced multi-objective problem solving techniques.

To deal with such a problem, a scientific method is needed, which can rank projects by considering relationship between elements in a network system (Lee & Kim, 2000). The usual practice in this respect is to select a number of inter-related criteria and apply a MCDM technique (e.g. AHP, ANP, DEA, etc) to find the weights of the criteria which enables ranking of Decision Making Units (DMUs). But such a straightforward approach is not efficient in all problem settings and especially in project selection problems where the number of criteria is high and there is interrelationship between pairs of criteria which should be taken into consideration when ranking the projects. In other words, not all the criteria are independent. Analytic Hierarchy Process (AHP) is a scientific method that can only rank projects in the Hierarchy system. Some of MCDM methods are not able to mix qualitative and quantitative factors and also are not applied for decision making with dependence and feedback. Furthermore, DEA cannot be an appropriate decision making method when there are a variety of project selection criteria and relationship amongst those criteria.

Thus, there are two issues which should be addressed in multi criteria project selection problem. First, the number of criteria is considerably high which restricts the application of the developed methods. Therefore, the first issue is to scale down the criteria domain. Second, pure expert based methods that rely only on the expert judgments are somehow inapplicable in real situations since individual psychological, even ethnic factors could bias expert opinion and consequently the results of the project selection study.

To address these two aforementioned issues, this study proposes an integrated ANP-DEA method for project selection. Adopting this integrated method in real-world project selection applications offer some advantages which will be discussed in the following. Data Envelopment Analysis (DEA) is a very powerful technique that not only determines Decision Making Units (DMUs) as efficient or inefficient units but also it can offer targets and benchmarks for improvement of the inefficient DMUs either by reducing the amount of inputs or increasing the outputs.

In judgment procedure sometimes important factors could be ignored in the analysis, which happens when giving a zero to the corresponding variable or when the weight found is in contradiction with a priori knowledge. This limitation has been overcome in

DEA by weight restriction and established bounds within which the weights can vary, preserving some flexibility or some uncertainty about the real value of the weights (Angulo-meza et al., 2002). Peer-evaluation instead of a self-evaluation which is calculated by the other methods is another advantage of DEA method. A peer-evaluation means that each DMU is evaluated according to the optimal weighting scheme of other DMUs. This besides increasing discrimination, provides an interesting meaning, considering a negotiation meeting among experts in order to select criteria or alternatives in a decision making process (Daraio & Simar, 2007). However, though DEA is extensively adopted in the problem of evaluating a group of alternatives, it has some limitation:

- i. The DEA method cannot determine if there are any relationships between variables and DMUs (Cooper et al., 2006).
- ii. The number of DMUs should be at least 2 or 3 times larger than the total number of input and output variables (Ramanathan, 2003; Berg, 2010).

To overcome these limitations the proposed integrated ANP-DEA uses ANP prior to DEA for determining the weight of criteria by considering relationship between them in a network system and scale down the number of criteria by classifying selected criteria into a relatively small number of groups. Moreover, DEA treats each group as an input or output. Therefore, the number of input-output will decrease considerably by ANP and this reduces the need for extensive number of DMUs. Using ANP integrated with DEA makes the assessment more realistic. These two methods could be applied in the field of project selection even with a wide variety of criteria. They are used in an integrated manner when the output of ANP as auxiliary method is served as input or output for DEA as the main method.

Application of DEA model needs determination of some special features of the model (Cooper et al., 2007). These features are:

- Input-output determination: a desirable input in DEA is the variable its decrease is of interest. Inversely, a desirable output in DEA is the variable its increase is of interest. This simple set of definitions can be served as a simple rule to determine the DEA inputs and outputs (Seiford and Zhu, 2002).
- Model type: in project selection problem one can decide between two types of DEA models namely basic models and full ranking models. Basic models divide between efficient and inefficient projects where more than one project may be selected as efficient projects. While full ranking models discriminate between all the projects where a full ranking of projects will be possible (Zhou et al., 2008).
- Model orientation: DEA model can be input-oriented or output-oriented. The orientation of DEA model is something that related to the degree of control that the modeler has on the variables. If the modeler can keep control on the input variables, make decrease or increase in them, then the model will be input-

oriented. On the other hand, where the modeler can keep control on the output variables and make decrease or increase in outputs, then the model will be output-oriented (Cooper et al., 2007).

- Return to scale: return to scale is an economic concept which describes the type of functional relationship between inputs and outputs. There are two types of RTS namely constant RTS (CRS) and variable RTS (VRS) including increasing RTS and decreasing RTS. Not in every application of DEA this economic concept is relevant. However, one always could draw a linear or non-linear functional relation between inputs and outputs. In the project selection problem we can set a simple rule to determine return to scale. If the functional relationship between inputs and outputs is linear, then the DEA model should be CRS. Otherwise, if a non-linear functional relationship is preferred, then the DEA model should be VRS (Cooper et al., 2007).

1.4 Research Objectives

Overall Aim

To develop a hybrid DEA-ANP method in solving project selection problems.

Specific Objectives

- i) To identify and determine the weights of significant criteria for project selection.
- ii) To rank projects in network system using Analytic Network Process and Data Envelopment Analysis.
- iii) To develop a prototype software for project selection problems.

1.5 Knowledge Contribution

It is essential to state that not only can this study be applied to selecting and ranking project, but also it can be applicable to any kind of decision-making procedure in the selection process in order to develop a hybrid method of decision-making considering the relationship between the criteria and the alternatives based on network system of elements and prototype software to be used as a tool utilizing Super Decision and LINDO applications in Project Selection issues.

1.6 Scope and Limitations

In DEA, the DMUs that have been applied must be homogenous units. This means the objectives of DMUs must be similar. In addition to this, the characteristics of their inputs and outputs should be identical, but they can be different in intensity or magnitude. For example, efficiencies of DEA will not be suitable when we compare construction projects and IT projects because of differences between their inputs and outputs. In order to eliminate this, the study compares construction projects. The number

of DMUs to be compared depends upon the number of criteria in DEA study. In general, as the total number of criteria (sum of inputs and outputs) are increased, the number of DMUs must be increased too. So the relation between the number of DMUs and the total number of criteria in the DEA will be followed by some rules of thumb. Therefore, the limitation of DEA is that the sample size of DMUs should be at least two or three times larger than the number of inputs and outputs in total (Avkiran, 2001; Ramanathan, 2003). Therefore, in the hybrid method, the criteria will be analyzed based on the Input-Output Efficiency Method to classify inputs and outputs. In this case, fewer projects can be compared with the same number of criteria.

1.7 Organization of the Thesis

There are five chapters in this thesis and each chapter can generally be summarized as follows:

Chapter one includes a background of the research with a problem statement, research objectives, knowledge contribution, the scope of the study etc. Chapter two is a literature review that includes literature on Multi Criteria Decision Making, Data Envelopment Analysis, project selection and also some previous studies about them. This chapter will provide the theoretical background for the study. Chapter three explains the general methodology on how the questionnaires were designed, distributed and gets results step by step. Chapter four is a description of the present situation of construction project selection in contractors' sights including analysis and interpretation of the results obtained from the survey questionnaire and previous document from case study. Lastly the results will be extracted; appropriate recommendations will be made and also presented in chapter five.

REFERENCES

- Aczél, J., & Saaty, T. L. (1983). Procedures for synthesizing ratio judgements. *Journal of Mathematical Psychology*, 27(1), 93–102.
- Adler, N., Friedman, L., & Sinuany-Stern, Z. (2002). Review of ranking methods in the data envelopment analysis context. *European Journal of Operational Research*, 140(2), 249–265.
- Ahmad, N. (2005). *The design, development and analysis of a multi criteria decision making support system model: Performance benchmarking of small to medium-sized manufacturing enterprise (SME)*.
- Ahola, T., Laitinen, E., Kujala, J., & Wikström, K. (2008). Purchasing strategies and value creation in industrial turnkey projects. *International Journal of Project Management*, 26(1), 87–94.
- Akdeniz, H. A., & Turgutlu, T. (2007). Supplier selection and retail: Analysis with two multi criteria evaluation methodologies. *Review of Social, Economic & Business Studies*, 9(10), 11–28.
- Al Khalil, M. I. (2002). Selecting the appropriate project delivery method using AHP. *International Journal of Project Management*, 20(6), 469–474.
- Alem, S. M., Jolai, F., & Shirkouhi, S. N. (2013). An integrated fuzzy DEA-fuzzy AHP approach: a new model for ranking decision-making units. *International Journal of Operational Research*, 17(1), 38.
- Amiri, M. P. (2010). Project selection for oil-fields development by using the AHP and fuzzy TOPSIS methods. *Expert Systems with Applications*, 37(9), 6218–6224.
- Anagnostopoulos, K. P., & Petalas, C. (2011). A fuzzy multicriteria benefit-cost approach for irrigation projects evaluation. *Agricultural Water Management*, 98(9), 1409–1416.
- Anand Raj, P. (1995). Multicriteria methods in river basin planning-A case study. *Water Science and Technology*, 31(8), 261–272.
- Angulo-meza, L., Pereira, M., & Lins, E. (2002). Review of Methods for Increasing Discrimination in Data Envelopment Analysis. *Annals of Operation Research*, 116, 225–242.
- Asgharpour, M. J. (2009). *Multi Criteria Decision Making*. University of Tehran.
- Atmaca, E., & Basar, H. B. (2012). Evaluation of power plants in Turkey using Analytic Network Process (ANP). *Energy*, 44(1), 555–563.
- Au, T., & Au, T. P. (1992). *Engineering economics for capital investment analysis*. Prentice Hall.
- Avkiran, N. K. (2001). Investigating technical and scale efficiencies of Australian Universities through data envelopment analysis. *Socio-Economic Planning Sciences*, 35(1), 57–80.
- Azizi, M., & Modarres, M. (2010). A decision model to select facial tissue raw material: A case from Iran. *OR Insight*, 23(4), 207–232.

- Berg, S. (2010). *Water Utility Benchmarking: Measurement, Methodology, and Performance Incentives*. International Water Association.
- Bonnabel, S., Collard, A., & Sepulchre, R. (2013). Rank-preserving geometric means of positive semi-definite matrices. *Linear Algebra and Its Applications*, 438(8), 3202–3216.
- Boran, F. E., Genc, S., Kurt, M., & Akay, D. (2009). A multi-criteria intuitionistic fuzzy group decision making for supplier selection with TOPSIS method. *Expert Systems with Applications*, 36(8), 11363–11368.
- Boucher, T. O., & MacStravic, E. L. (1991). Multiattribute evaluation within a present value framework and its relation to the analytic hierarchy process. *The Engineering Economist*, 37(1), 1–32.
- Brigham, E., & Ehrhardt, M. (2013). *Financial Management: Theory and practice* (14, illust., p. 1200).
- Buda, A., & Jarynowski, A. (2010). Life-time of correlations and its applications. *Wydawnictwo Niezależne*, 1, 5–21.
- Bussey, L. E., & Eschenbach, T. G. (1978). *The economic analysis of industrial projects*. Prentice-Hall Englewood Cliffs, NJ.
- Büyükyazıcı, M., & Sucu, M. (2003). The analytic hierarchy and analytic network processes. *Hacettepe Journal of Mathematics and Statistics*, 32, 65–73.
- Cambron, K. E., & Evans, G. W. (1991). Layout design using the analytic hierarchy process. *Computers & Industrial Engineering*, 20(2), 211–229.
- Çelebi, D., & Bayraktar, D. (2008). An integrated neural network and data envelopment analysis for supplier evaluation under incomplete information. *Expert Systems with Applications*, 35(4), 1698–1710.
- Chamodrakas, I., Alexopoulou, N., & Martakos, D. (2009). Customer evaluation for order acceptance using a novel class of fuzzy methods based on TOPSIS. *Expert Systems with Applications*, 36(4), 7409–7415.
- Chan, D. W. M., & Kumaraswamy, M. M. (1997). A comparative study of causes of time overruns in Hong Kong construction projects. *International Journal of Project Management*, 15(1), 55–63.
- Chandran, B., Golden, B., & Wasil, E. (2005). Linear programming models for estimating weights in the analytic hierarchy process. *Computers & Operations Research*, 32(9), 2235–2254.
- Charnes, A., Cooper, W. W., & Rhodes, E. (1978). Measuring the efficiency of decision making units. *European Journal of Operational Research*, 2(6), 429–444.
- Chen, S. J. J., Hwang, C. L., Beckmann, M. J., Krelle, W., & Shu-Jen, J. C. (1992). *Fuzzy multiple attribute decision making: methods and applications*. (J. B. Martin & W. Krelle, Eds.) (p. 536). Springer-Verlag New York, Inc.
- Cheng, E. W. L., & Li, H. (2004). Contractor selection using the analytic network process. *Construction Management and Economics*, 22(10), 1021–1032.
- Cheng, E. W. L., & Li, H. (2004). Exploring quantitative methods for project location selection. *Building and Environment*, 39(12), 1467–1476.

- Cheng, E. W. L., & Li, H. (2005). Analytic Network Process Applied to Project Selection. *Journal of Construction Engineering and Management*, 131(4), 459–466.
- Cheng, E. W. L., Li, H., & Yu, L. (2005). The analytic network process (ANP) approach to location selection: a shopping mall illustration. *Construction Innovation: Information, Process, Management*, 5(2), 83–97.
- Cohen, J. (1988). *Statistical power analysis for the behavioral sciences*. Lawrence Erlbaum.
- Cooper, R. G. (2013). Using Portfolio Management to Boost Innovation., 56(5), 25–33.
- Cooper, W. W., Seiford, L. M., & Tone, K. (2007). *Data envelopment analysis: A comprehensive text with models, applications, references and DEA-Solver Software. Second editions*. Springer.
- Curlee, W., & Gordon, R. L. (2010). *Going beyond the Project Management Body of Knowledge (PMBOK) Guide*.
- Dagdeviren, M., & Yuksel, İ. (2007). Personnel Selection Using Analytic Network Process. *İstanbul Ticaret Üniversitesi Fen Bilimleri Dergisi, Yıl*, 6, 99–118.
- Dai, X., & Kuosmanen, T. (2014). Best-practice benchmarking using clustering methods: Application to energy regulation. *Omega*, 42(1), 179–188.
- Daraio, C., & Simar, L. (2007). *Advanced Robust and Nonparametric Methods in Efficiency Analysis* (p. 270). Springer.
- De Boer, L., Labro, E., & Morlacchi, P. (2001). A review of methods supporting supplier selection. *European Journal of Purchasing & Supply Management*, 7(2), 75–89.
- Deng, H., Yeh, C.-H., & Willis, R. J. (2000). Inter-company comparison using modified TOPSIS with objective weights. *Computers & Operations Research*, 27(10), 963–973.
- Diamond, P. A., & Hausman, J. A. (1994). Contingent valuation: Is some number better than no number? *The Journal of Economic Perspectives*, 8(4), 45–64.
- Doyle, J., & Green, R. (1994). Strategic choice and data envelopment analysis: comparing computers across many attributes. *Journal of Information Technology*, 9(1), 61–69.
- Duncan, W. R. (2004). *A Guide to the Project Management Body of Knowledge*.
- Dyson, R. G., Allen, R., Camanho, A. S., Podinovski, V. V., Sarrico, C. S., & Shale, E. A. (2001). Pitfalls and protocols in DEA. *European Journal of Operational Research*, 132(2), 245–259.
- Ertuğrul, A., & Karakaşlı, N. (2009). Performance evaluation of Turkish cement firms with fuzzy analytic hierarchy process and TOPSIS methods. *Expert Systems with Applications*, 36(1), 702–715.
- Farrell, M. J. (1957). The measurement of productive efficiency. *Journal of the Royal Statistical Society. Series A (General)*, 120(3), 253–290.

- Feijóo, C., Gómez-Barroso, J. L., & Voigt, P. (2014). Exploring the economic value of personal information from firms' financial statements. *International Journal of Information Management*, 34(2), 248–256.
- Feizizadeh, B., Jankowski, P., & Blaschke, T. (2014). A GIS based spatially-explicit sensitivity and uncertainty analysis approach for multi-criteria decision analysis. *Computers & Geosciences*, 64, 81–95.
- Fishburn, P. C. (1967). Additive Utilities with Incomplete Product Set: Applications to Priorities and sharings. In *Operations Research Society of America (ORSA), Baltimore, MD, USA*.
- Forman, E. H., & Gass, S. I. (2001). The analytic hierarchy process: An exposition. *Operations Research*, 49(4), 469–486.
- García, J. L., Alvarado, A., Blanco, J., Jiménez, E., Maldonado, A. A., & Cortés, G. (2014). Multi-attribute evaluation and selection of sites for agricultural product warehouses based on an Analytic Hierarchy Process. *Computers and Electronics in Agriculture*, 100, 60–69.
- Gencer, C., & Gärpınar, D. (2007). Analytic network process in supplier selection: A case study in an electronic firm. *Applied Mathematical Modelling*, 31(11), 2475–2486.
- Ghorbani, M., Mohammad Arabzad, S., & Shahin, A. (2013). A novel approach for supplier selection based on the Kano model and fuzzy MCDM. *International Journal of Production Research*, 51(18), 5469–5484.
- Goletsis, Y., Psarras, J., & Samouilidis, J.-E. E. (2003). Project ranking in the Armenian energy sector using a multicriteria method for groups. *Annals of Operations Research*, 120(1), 135–157.
- Green, R. H., Doyle, J. R., & Cook, W. D. (1996). Preference voting and project ranking using DEA and cross-evaluation. *European Journal of Operational Research*, 90(3), 461–472.
- Guresen, E. (2007). Transportation mode selection for Turkish automotive industry using analytic network process. In *International conference on system science and simulation in engineering* (pp. 179–183). Venice, Italy: World Scientific and Engineering Academy and Society (WSEAS).
- Habtamu, A., Zhao, P., & Ren, J. (2013). Track Selection for Light Rail Transit (LRT) Projects by Applying Analytic Hierarchy Process (AHP) Decision-Making Method — Case Study: Evaluation of Addis Ababa Light Rail Transit (AALRT) Project's Track Selection. In *American Society of Civil Engineers* (pp. 634–649).
- Hartman, J. C. (2007). *Engineering economy and the decision-making process*. Pearson/Prentice Hall.
- Hassan, M. Y., Majid, M. S., & Rahman, H. A. (2000). Application of energy efficient motor in Malaysian industries. In *TENCON Proceedings* (Vol. 2, pp. 97–102).
- Hatami-Marbini, A., Tavana, M., Moradi, M., & Kangi, F. (2013). A fuzzy group Electre method for safety and health assessment in hazardous waste recycling facilities. *Safety Science*, 51(1), 414–426.

- Hobbs, B. F., & Meier, P. (2000). *Energy decisions and the environment : A guide to the use of multicriteria methods*. Boston, Mass. [u.a.]: Kluwer Academic Publishers.
- Hokkanen, J., & Salminen, P. (1997). Choosing a solid waste management system using multicriteria decision analysis. *European Journal of Operational Research*, 98(1), 19–36.
- Huang, W.-C. C., & Chen, C.-H. H. (2005). Using the ELECTRE II method to apply and analyze the differentiation theory. *Proceedings of the Eastern Asia Society for Transportation Studies.*, 5, 2237–2249.
- Hwang, C. L., & Yoon, K. (1981). *Multiple attribute decision making: methods and applications: a state-of-the-art survey* (Vol. 13). Springer-Verlag New York.
- Hwang, F. P. (1987). *An expert decision making support system for multiple attribute decision making*. Kansas State University.
- Jahanshahloo, G. R., Khodabakhshi, M., Hosseinzadeh Lotfi, F., & Moazami Goudarzi, M. R. (2011). A cross-efficiency model based on super-efficiency for ranking units through the TOPSIS approach and its extension to the interval case. *Mathematical and Computer Modelling*, 53(9-10), 1946–1955.
- Jharkharia, S., & Shankar, R. (2007). Selection of logistics service provider: An analytic network process (ANP) approach. *Omega*, 35(3), 274–289.
- Jiang, J. J., & Klein, G. (1999). Project selection criteria by strategic orientation. *Information & Management*, 36(2), 63–75.
- Jiang, Y., Xu, L., & Wang, H. (2009). Influencing factors for predicting financial performance based on genetic algorithms. *Systems Research and Behavioral Science*, 26(6), 661–673.
- Joro, T. (1998). *Models for identifying target units in Data Envelopment Analysis: comparison and extension*. Working Papers.
- Kauko, T. J. (2002). *Modelling the locational determinants of house prices: neural network and value tree approaches*.
- Lai, Y.-T., Wang, W.-C., & Wang, H.-H. (2008). AHP- and simulation-based budget determination procedure for public building construction projects. *Automation in Construction*, 17(5), 623–632.
- Lee, J. W., & Kim, S. H. (2000). Using analytic network process and goal programming for interdependent information system project selection. *Computers & Operations Research*, 27(4), 367–382.
- Lefley, F. (1996). The payback method of investment appraisal: A review and synthesis. *International Journal of Production Economics*, 44(3), 207–224.
- Liang, G. S. (1999). Fuzzy MCDM based on ideal and anti-ideal concepts. *European Journal of Operational Research*, 112(3), 682–691.
- Liang, L., Wu, J., Cook, W. D., & Zhu, J. (2008). Alternative secondary goals in DEA cross-efficiency evaluation. *International Journal of Production Economics*, 113(2), 1025–1030.

- Liao, S. K., & Chang, K. L. (2009). Selecting Public Relations Personnel of Hospitals by Analytic Network Process. *Journal of Hospital Marketing & Public Relations*, 19(1), 52–63.
- Lineberger, K., Levitt, J., Smith, D. J., Van Nguyen, T., & Peter, A. M. (2014). A Systems Engineering Approach to Quantitative Comparison of Molecular Instruments for Use on the International Space Station. *Procedia Computer Science*, 28, 340–346.
- Mahdi, I. M., & Alreshaid, K. (2005). Decision support system for selecting the proper project delivery method using analytical hierarchy process (AHP). *International Journal of Project Management*, 23(7), 564–572.
- Mahmoodzadeh, S., Shahrabi, J., Pariazar, M., & Zaeri, M. S. (2007). Project selection by using fuzzy AHP and TOPSIS technique. *International Journal of Human and Social Sciences*, 1(3), 135–140.
- Meade, L. M., & Presley, A. (2002). R&D project selection using the analytic network process. *Engineering Management, IEEE Transactions on*, 49(1), 59–66.
- Mehrgan, M. R. (2002). *Quantitative model for organization performance evaluation in Data Envelopment Analysis*. Tehran, Iran: University of Tehran.
- Miller, D. W., & Starr, M. K. (1960). *Executive decisions and operations research* (Vol. 289). Prentice-Hall.
- Mintesnot, G., & Takano, S. (2007). Multi-criteria decision making for public transportation development projects using Analytic Network Process (ANP). *Journal of the Eastern Asia Society for Transportation Studies*, 7, 223–237.
- Mohajeri, N., & Amin, G. R. (2010). Railway station site selection using analytical hierarchy process and data envelopment analysis. *Computers & Industrial Engineering*, 59(1), 107–114.
- Mohanty, R. P. (1992). Project selection by a multiple-criteria decision-making method: an example from a developing country. *International Journal of Project Management*, 10(1), 31–38.
- Nazarko, J., & Šaparauskas, J. (2014). Application of DEA method in efficiency evaluation of public higher education institutions. *Technological and Economic Development of Economy*, 20(1), 25–44.
- Nieto-Morote, A., & Ruz-Vila, F. (2012). A fuzzy multi-criteria decision-making model for construction contractor prequalification. *Automation in Construction*, 25, 8–19.
- Nixon, J. D., Dey, P. K., Ghosh, S. K., & Davies, P. A. (2013). Evaluation of options for energy recovery from municipal solid waste in India using the hierarchical analytical network process. *Energy*, 59, 215–223.
- Olson, D. L. (2004). Comparison of weights in TOPSIS models. *Mathematical and Computer Modelling*, 40, 721–727.
- Onut, S., Kara, S. S., & Isik, E. (2009). Long term supplier selection using a combined fuzzy MCDM approach: A case study for a telecommunication company. *Expert Systems with Applications*, 36(2), 3887–3895.

- Oskounjad, M. M. (2002). *Engineering economy of economic evaluation of industrial project*. Amirkabir University. University of Politechnic.
- Park, N., Jung, S., Park, H., Choi, H., Chin, S., & Jung, H. (2010). Payback period estimation of ground-source and air-source multi heat pumps in Korea based on yearly running cost simulation. In *International Refregeration and Air Conditioning Conference*. Korea.
- Park, W. R., & Jackson, D. E. (1973). *Cost engineering analysis: a guide to the economic evaluation of engineering projects*. Wiley. New York: Wiley.
- Patil, M., Pimplodkar, V., Zade, A. R., Vibhute, V., & Ghadge, R. (2013). A Survey on Voting System Techniques. *International Journal of Advanced Research in Computer Science and Software Engineering*, 3(1), 114–117.
- Piantanakulchai, M. (2005). Analytic network process model for highway corridor planning. In *ISAHP*. Hawaii.
- Posner, E. (2013). Benefit-Cost Analysis for Financial Regulation. *The American Economic Review* V, 103(3), 393–397.
- Putrus, P. (1990). Accounting for Intangibles in Integrated Manufacturing (nonfinancial justification based on the Analytical Hierarchy Process). *Information Strategy*, 6, 25–30.
- Ramanathan, R. (2003). *An introduction to data envelopment analysis: a tool for performance measurement*. Chicago: Sage Publications Pvt. Ltd.
- Ramanathan, R. (2006). Data envelopment analysis for weight derivation and aggregation in the analytic hierarchy process. *Computers & Operations Research*, 33(5), 1289–1307.
- Ramcharan, E. K., & Dey, P. K. (2005). The role of environmental factors in industrial site selection activities: A case of limestone quarry expansion in Barbados. *Impact Assessment and Project Appraisal*, 23(2), 147–154.
- Remer, D. S., & Nieto, A. P. (1995). A compendium and comparison of 25 project evaluation techniques. Part 1: Net present value and rate of return methods. *International Journal of Production Economics*, 42(1), 79–96.
- Rogers, M. G., Bruen, M., & Maystre, L. Y. (1999). Choosing the best waste incineration strategy for the eastern Switzerland region. Electre and decision support. In *Choosing the best waste incineration strategy for the eastern Switzerland region. Electre and decision support*. Boston, MA, USA: Kluwer Academic Publishers.
- Rosenblatt, M. J., & Jucker, J. V. (1979). Capital expenditure decision/making: some tools and trends. *Interfaces*, 63–69.
- Roy, B. (1991). The outranking approach and the foundations of ELECTRE methods. *Theory and Decision*, 31(1), 49–73.
- Saaty, R. (2003). Decision making in complex environments: The Analytic Hierarchy Process (AHP) for Decision Making and the Analytic Network Process (ANP) for Decision Making with dependence and feedback. In *Decision making in complex environments: The Analytic Hierarchy Process (AHP) for Decision Making and the*

Analytic Network Process (ANP) for Decision Making with dependence and feedback. Pittsburgh.

- Saaty, T. L. (1980). *The analytic hierarchy process: planning, setting priorities, resource allocation.* New York; London: McGraw-Hill International Book Co.
- Saaty, T. L. (1986). Axiomatic foundation of the analytic hierarchy process. *Management Science*, 32(7), 841–855.
- Saaty, T. L. (1987). Rank generation, preservation, and reversal in the analytic hierarchy decision process. *Decision Sciences*, 18(2), 157–177.
- Saaty, T. L. (1990). How to make a decision: The analytic hierarchy process. *European Journal of Operational Research*, 48(1), 9–26.
- Saaty, T. L. (1996). *Decision making with dependence and feedback: the analytic network process: the organization and prioritization of complexity.* RWS publications Pittsburgh, PA, US.
- Saaty, T. L. (2004). Fundamentals of the analytic network process—Dependence and feedback in decision-making with a single network. *Journal of Systems Science and Systems Engineering*, 13(2), 129–157.
- Saaty, T. L. (2004). *The Analytic Network Process Benefits Opportunities Costs and Risks Decision Example* (pp. 1–10).
- Saaty, T. L. (2005). *Theory and Applications of analytic network process* (Vol. 4922). Pittsburgh: RWS publications Pittsburgh, PA.
- Saaty, T. L. (2008). Relative measurement and its generalization in decision making why pairwise comparisons are central in mathematics for the measurement of intangible factors the analytic hierarchy/network process. *Revista de La Real Academia de Ciencias Exactas, Fisicas Y Naturales. Serie A. Matematicas*, 102(2), 251–318.
- Saaty, T. L., & Turner, D. S. (1996). Prediction of the 1996 super bowl an application of the ahp with feedback-the supermatrix approach. In *Fourth International Symposium on The Analytic Hierarchy Process* (pp. 12–15).
- Saaty, T. L., & Vargas, L. G. (2006). *Decision making with the Analytic Network Process: economic, political, social and technological applications with benefits, opportunities, costs and risks.* Springer.
- Salehi, M., & Tavakkoli-Moghaddam, R. (2008). Project Selection by Using a Fuzzy TOPSIS Technique. *International Journal of Computer, Information, and Systems Sciences and Engineering*, 2(2), 99–104.
- Sarkis, J., & Sundarraj, R. P. (2006). Evaluation of enterprise information technologies: a decision model for high-level consideration of strategic and operational issues. *Systems, Man, and Cybernetics, Part C: Applications and Reviews, IEEE Transactions on*, 36(2), 260–273.
- Schniederjans, M. J., Hoffman, J. J., & Sirmans, G. S. (1995). Using Goal Programming and the analytic hierarchy process in house selection. *The Journal of Real Estate Finance and Economics*, 11(2), 167–176.

- Seiford, L. M., & Zhu, J. (2002). Modeling undesirable factors in efficiency evaluation. *European Journal of Operational Research*, 142(1), 16-20.
- Sevкли, M., Koh, S. C. L., Zaim, S., Demirbag, M., & Tatoglu, E. (2007). An application of data envelopment analytic hierarchy process for supplier selection: a case study of BEKO in Turkey. *International Journal of Production Research*, 45(9), 1973–2003.
- Sexton, T. R., Silkman, R. H., & Hogan, A. J. (1986). Data envelopment analysis: Critique and extensions. *New Directions for Program Evaluation*, 1986(32), 73–105.
- Shang, J., & Sueyoshi, T. (1995). A unified framework for the selection of a Flexible Manufacturing System. *European Journal of Operational Research*, 85(2), 297–315.
- Shanian, A., & Savadogo, O. (2006). TOPSIS multiple-criteria decision support analysis for material selection of metallic bipolar plates for polymer electrolyte fuel cell. *Journal of Power Sources*, 159(2), 1095–1104.
- Shih, H.-S., Shyur, H.-J., & Lee, E. S. (2007). An extension of TOPSIS for group decision making. *Mathematical and Computer Modelling*, 45, 801–813.
- Shyur, H.-J., & Shih, H.-S. (2006). A hybrid MCDM model for strategic vendor selection. *Mathematical and Computer Modelling*, 44, 749–761.
- Sun, C. C., & Lin, G. T. R. (2009). Using fuzzy TOPSIS method for evaluating the competitive advantages of shopping websites. *Expert Systems with Applications*, 36(9), 11764–11771.
- Talluri, S., & Paul Yoon, K. (2000). A cone-ratio DEA approach for AMT justification. *International Journal of Production Economics*, 66(2), 119–129.
- Taslicali, A. K., & Ercan, S. (2006). The analytic hierarchy & the analytic network processes in multicriteria decision making: A comparative study. *Journal of Aeronautics & Space Technologies*, 2(4), 55–65.
- Tjader, Y., May, J. H., Shang, J., Vargas, L. G., & Gao, N. (2014). Firm-level outsourcing decision making: A balanced scorecard-based analytic network process model. *International Journal of Production Economics*, 147, 614–623.
- Tran, L., Knight, C., O'Neill, R., & Smith, E. (2004). Integrated Environmental Assessment of the Mid-Atlantic Region with Analytical Network Process. *Environmental Monitoring and Assessment*, 94(1), 263–277.
- Triantaphyllou, E. (2000). *Multi-criteria decision making methods : a comparative study* (Vol. 44, pp. 5–21). Dordrecht [u.a.]: Kluwer Acad. Publ.
- Tsao, C. T. (2011). Fuzzy net present values for capital investments in an uncertain environment. *Computers & Operations Research*, 39(8), 1885–1892.
- Wabalickis, R. N. (1988). Justification of FMS with the analytic hierarchy process. *Journal of Manufacturing Systems*, 7(3), 175–182.
- Wang Ming, Y., Chin Sang, K., Poon, G. K. K., Wang, Y.-M., & Chin, K.-S. (2008). A data envelopment analysis method with assurance region for weight generation in the analytic hierarchy process. *Decision Support Systems*, 45(4), 913–921.

- Wang Ming, Y., Chin Sang, K., Wang, Y.-M., & Chin, K.-S. (2009). A new data envelopment analysis method for priority determination and group decision making in the analytic hierarchy process. *European Journal of Operational Research*, 195(1), 239–250.
- Wang Ming, Y., Luo, Y., & Wang, Y.-M. (2009). On rank reversal in decision analysis. *Mathematical and Computer Modelling*, 49(5-6), 1221–1229.
- Wang Ming, Y., Parkan, C., Luo, Y., & Wang, Y.-M. (2008). A linear programming method for generating the most favorable weights from a pairwise comparison matrix. *Computers & Operations Research*, 35(12), 3918–3930.
- Wang Wen, J., Cheng Hsue, C., & Huang Cheng, K. (2009). Fuzzy hierarchical TOPSIS for supplier selection. *Applied Soft Computing*, 9(1), 377–386.
- Wang Ming, Y., & Elhag, T. M. S. (2006). Fuzzy TOPSIS method based on alpha level sets with an application to bridge risk assessment. *Expert Systems with Applications*, 31(2), 309–319.
- Wang, T.-C., & Chang, T.-H. (2007). Application of TOPSIS in evaluating initial training aircraft under a fuzzy environment. *Expert Systems with Applications*, 33(4), 870–880.
- Wang, W.-K., Huang, H.-C., & Lai, M.-C. (2008). Design of a knowledge-based performance evaluation system: A case of high-tech state-owned enterprises in an emerging economy. *Expert Systems with Applications*, 34(3), 1795–1803.
- Wang, X., & Triantaphyllou, E. (2008). Ranking irregularities when evaluating alternatives by using some ELECTRE methods. *Omega*, 36(1), 45–63.
- Wang, Y. M., Chin, K. S., & Yang, J. B. (2006). Three new models for preference voting and aggregation. *Journal of the Operational Research Society*, 58(10), 1389–1393.
- Wang, Y.-M., Liu, J., Elhag, T. M. S. S., & Wang Ming, Y. (2008). An integrated AHP–DEA methodology for bridge risk assessment. *Computers & Industrial Engineering*, 54(3), 513–525.
- Wedley, W. C., Choo, E. U., & Schoner, B. (2001). Magnitude adjustment for AHP benefit/cost ratios. *European Journal of Operational Research*, 133(2), 342–351.
- Wideman, R. M. (1995). Criteria for a project-management body of knowledge. *International Journal of Project Management*, 13(2), 71–75.
- Womer, N. K., Bournol, M. L. L., Dula, J. H., & Retzlaff-Roberts, D. (2006). Benefit-cost analysis using data envelopment analysis. *Annals of Operations Research*, 145(1), 229–250.
- Wu, C. R., Lin, C. T., & Chen, H. C. (2009). Integrated environmental assessment of the location selection with fuzzy analytical network process. *Quality & Quantity*, 43(3), 351–380.
- Wu, J., Liang, L., & Yang, F. (2009). Determination of the weights for the ultimate cross efficiency using Shapley value in cooperative game. *Expert Systems with Applications*, 36(1), 872–876.

- Wu, J., Liang, L., & Zha, Y. (2008). Determination of the Weights of Ultimate Cross Efficiency based on the Solution of Nucleolus in Cooperative Game. *Systems Engineering - Theory & Practice*, 28(5), 92–97.
- Wu, J., Liang, L., Zha, Y., & Yang, F. (2009). Determination of cross-efficiency under the principle of rank priority in cross-evaluation. *Expert Systems with Applications*, 36(3), 4826–4829.
- Yang, F., Ang, S., Xia, Q., & Yang, C. (2012). Ranking DMUs by Using Interval DEA Cross Efficiency Matrix with Acceptability Analysis. *European Journal of Operational Research*, 223(2), 483–488.
- Yang, T., & Kuo, C. (2003). A hierarchical AHP/DEA methodology for the facilities layout design problem. *European Journal of Operational Research*, 147(1), 128–136.
- Zavadskas, E. K., Turskis, Z., & Kildienė, S. (2014). State of art surveys of overviews on MCDM/MADM methods. *Technological and Economic Development of Economy*, 20(1), 165–179.
- Zerafat Angiz, M., Mustafa, A., & Kamali, M. J. (2012). Cross-ranking of Decision Making Units in Data Envelopment Analysis. *Applied Mathematical Modelling*, 37(0), 398–405.
- Zhou, P., Ang, B. W., & Poh, K. L. (2008). A survey of data envelopment analysis in energy and environmental studies. *European Journal of Operational Research*, 189(1), 1-18.
- Zimmermann, H. J. (2001). *Fuzzy set theory--and its applications*. Springer.