

Slicing Time

Sustainable Tropical Environmental Design Exhibition 2010

<http://www.vlmp.upm.edu.my>



STEdex'10 – Nur Dalilah Dahlan, *Slicing Time, Sustainable Tropical Environmental Design Exhibition 2010*, ISSN : 2180-0685, Vol : 2, [48-49], Faculty of Design and Architecture, Universiti Putra Malaysia

The serenity of the Taiping Lake Garden is framed through the web openings of Nurul Atteya's Gallery. This modest sprawling structure displays a fine degree of contrast yet settles on the site brilliantly surrounded by century old trees.

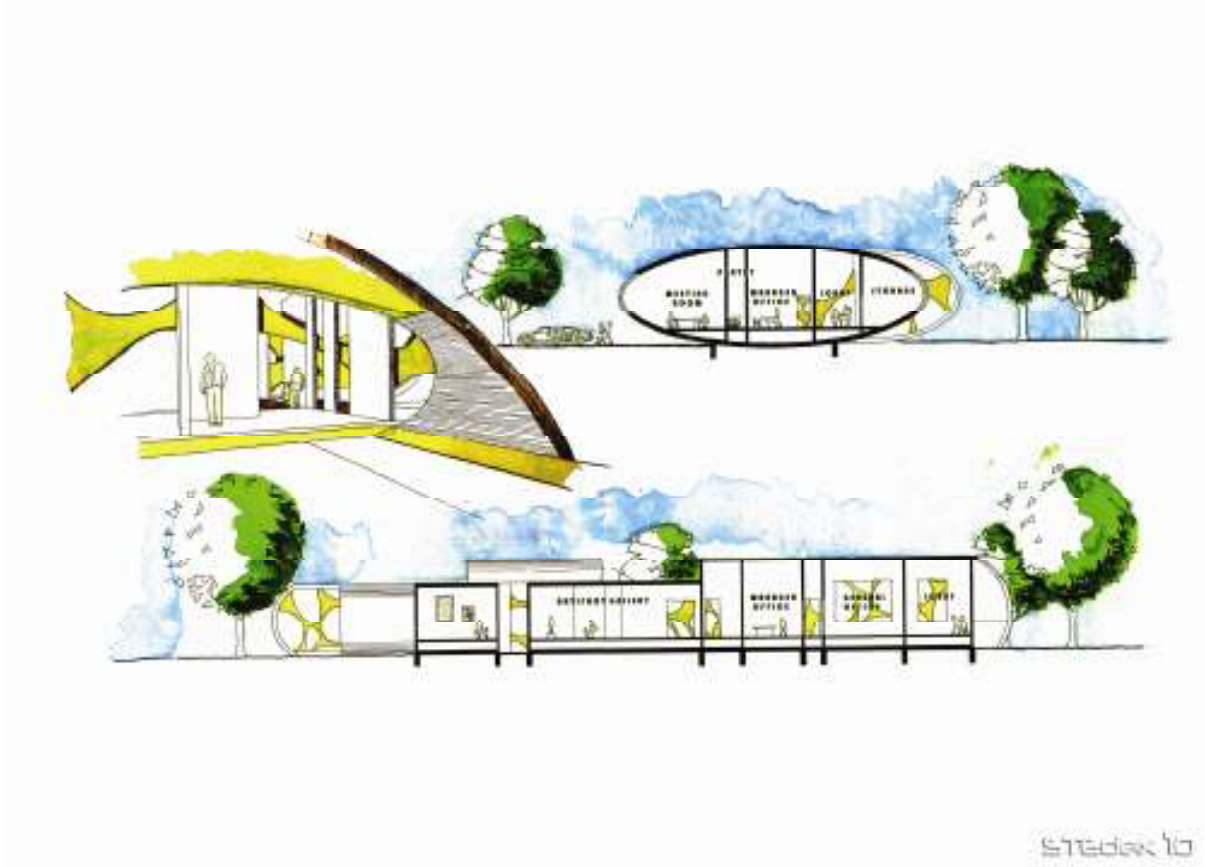
Her design highlights series of events starting from the first settlers of Taiping, the tin mining business boom, civil conflicts, moral revival struggle and the Taiping we know now. Located in a close distance with the Taiping Prison (north) and Lake Garden (south), the designer sees her design as a bonding entity that connects those two prominent landmarks.

The interpreted connection is masked using a group of organic-volumetric concrete structure and fuses natural lighting throughout the exhibition and library areas. Despite its massive round concrete construction, the interior space which houses the series of events is sliced with thin web like partitions representing the fine line of time continuum. It is a clever way to optimise the interior spaces, turning them into a one long interior lit up with soothing natural lighting.



Slicing Time_1

In terms of getting the message of education across, Nurul Atteya introduces a design that manoeuvres its interior spatial programming to highlight Taiping's history. Its inviting form is proposed to attract the local younger generation to 'check out' the gallery's facilities, mainly the library.



Slicing Time_2



Slicing Time_2

Nurul Atteya Adnan