

5

Urban Revolution

Wan Srihani Wan Mohamed

Jury Review

Jasmeet Sidhu

Architecture of Pretence

Wan Srihani Wan Mohamed & Ida Suriana Ismail

Modular Morphogenesis

Mohammad Yazah Mat Raschid & Wan Srihani Wan Mohamed

Revolutionary Urban Camping

Mohammad Yazah Mat Raschid & Ida Suriana Ismail

Morphogenic Nomadic Experience

Mohammad Yazah Mat Raschid

Urban Chaotic Experience

Wan Srihani Wan Mohamed & Ida Suriana Ismail

Urban Revolution

Wan Srihani Wan Mohamed

The first project, Dark Side of the Moon Pavilion demands the creativity of a student to dwell upon the psychoanalysis of deep thought and interpret one's state of emotion as the source of design generation. The final expression of forms and the drama in the spatial organization need to successfully inform the identity of the designer. The project also allows students to experiment the interior and external relationship in a built environment in a suburban setting.

Meanwhile, the second project introduces a new concept of budget accommodation in urban setting for travellers. With a set of criteria and requirements given in the project brief, various design strategies were delved into, ranging from curvilinear balconies to haphazard and disorganized platforms. The emphasis is on how the idea of transient is being deployed to achieve sustainable tourism in cities. Urban camping is still a new idea to be looked into especially for a country like Malaysia, whereby the dividing line between architecture and sustainability is still being defined. Several selections from the students' projects are reviewed in this article. Selection criteria are based on their exceptional approach in design concepts of forms and elements, space planning and function as well as structure exploration and site exploitation.

Lastly, the third project is based on the morphogenesis or architectural simulation and bio-mimicry by designing an integrative cell component that can be divided and differentiated until an emergent form is produced. The morphological resonance is created by manipulating singular cells through multiplication and magnification to produce modular building envelope for open space planning. The process allows for bolder form explorations without compromising on the functional aspects of a building.

Jury Review

Jasmeet Sidhu

The most notable strength of this year's artefacts is the high quality of conceptual ideas and the manner they are being translated into design through challenging projects. For example, in the Dark Side of the Moon Pavilion project, the design task is to challenge the student's creativity based on something which is unreal and controlled by the unconscious mind. Here, the adequacy of the psychoanalysis of a designer's thought is clearly conveyed by the selected scheme whilst the strong forms and colours set the mood in its design expression. The CESTA project is another big challenge to the students in terms of understanding the bio-process and transforming the main issues to a built environment. Here, the architectural simulation or morphogenesis process of integrative cell is fast becoming a new trend in architecture despite the widespread critics that consider the approach as bearing too much emphasis on the form. However, the selected students' projects revolutionize the more environmentally adaptive modular technology that is flexible and requires less maintenance. They have utilized the multiple cells in different shapes and configurations to enhance the spatial quality in an open plan, which are the next hot items in design.

Meanwhile, Municipal Transients Tenement (MTT) projects call for critical responses from the students on understanding project brief and new building typology. Design is a response to a problem, and for it to be replicable, there has to be more than just drawings but a rationale. In this case,

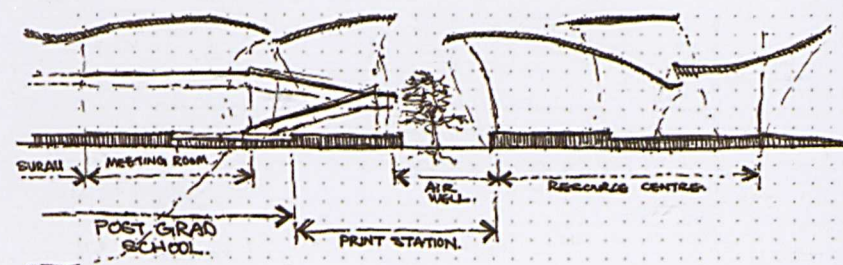
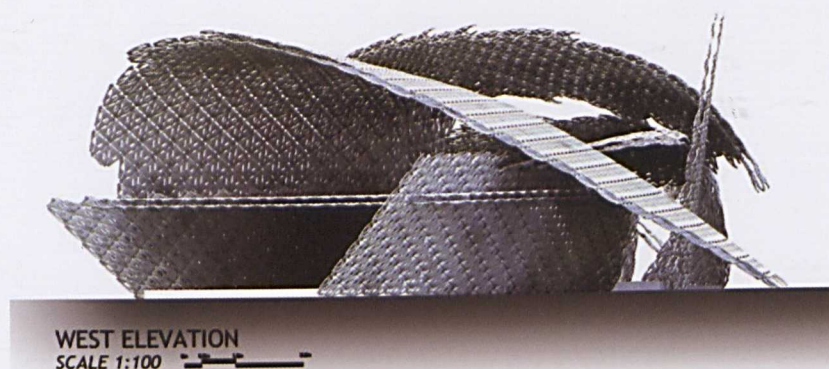
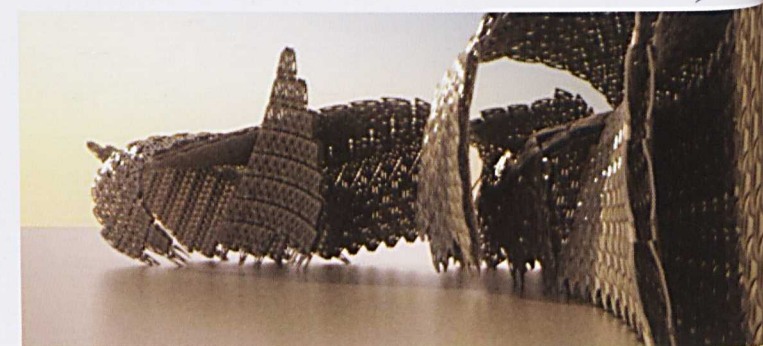
the architectural spaces are not clearly defined, which lifted an enormous constraint on the building forms and they are free to go any which way. Of all the schemes presented the two selected explained what they were trying to do and served as model for others; it is liveable as a temporary urban camping sites and has lessons that can be applied anywhere. The building with no enclosure walls and with high emphasis on the environmental factors plays an important role in enhancing urban camping experience in Penang. The selected design takes more of the human factors into account and provides a less sterile environment that would be more acceptable (not just hypothetically replicable) across more cultures.

The glaring weakness of the group's proposal is the poor quality of the spaces that is being experienced. There is too much emphasis on the form making that it is felt the manner on how the spaces are experienced are not given enough thoughts and the forms are over-empowering the whole scheme. Whilst the open planning is expected in using modular building envelopes, it is also important to ensure that the urban fabrics are integrated in the design. Parallel to this, more investigations on the urban features—social and the environmental aspects should be given more attention when dealing in design of public spaces. An urban project without an urban intervention and context does not have the soul that users can identify with; i.e. the sense of belonging to the particular urban spaces.

Architecture of Pretence

Wan Srihani Wan Mohamed & Ida Suriana Ismail

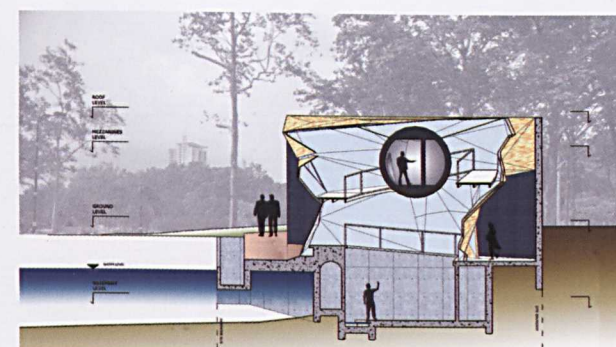
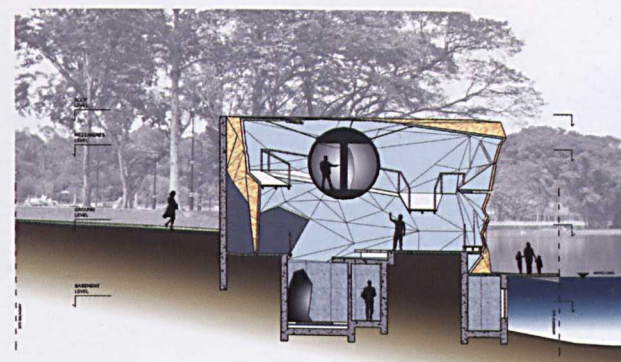
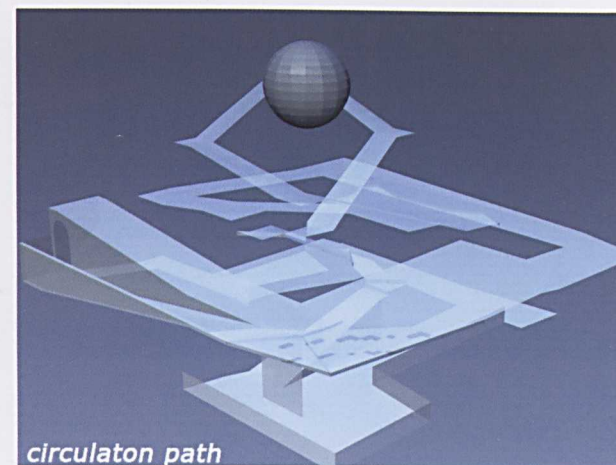
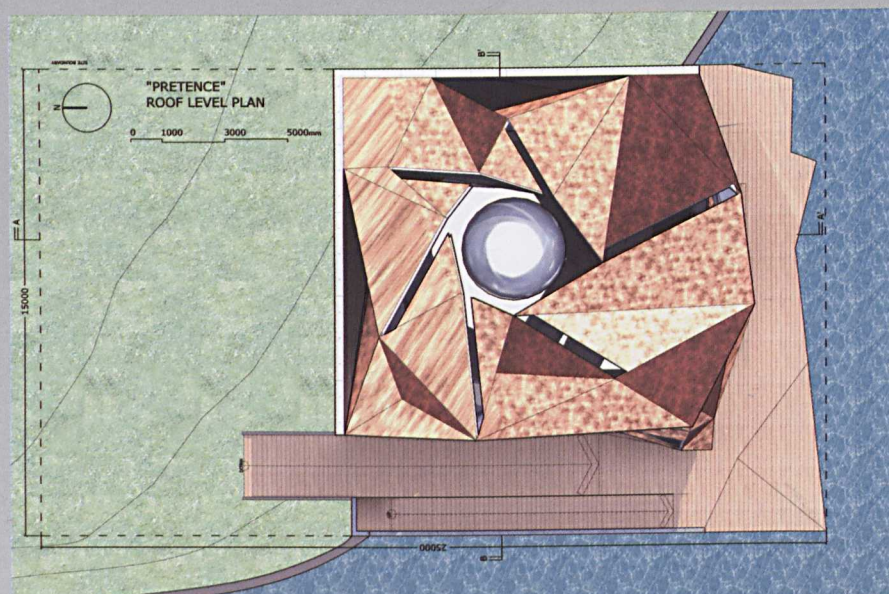
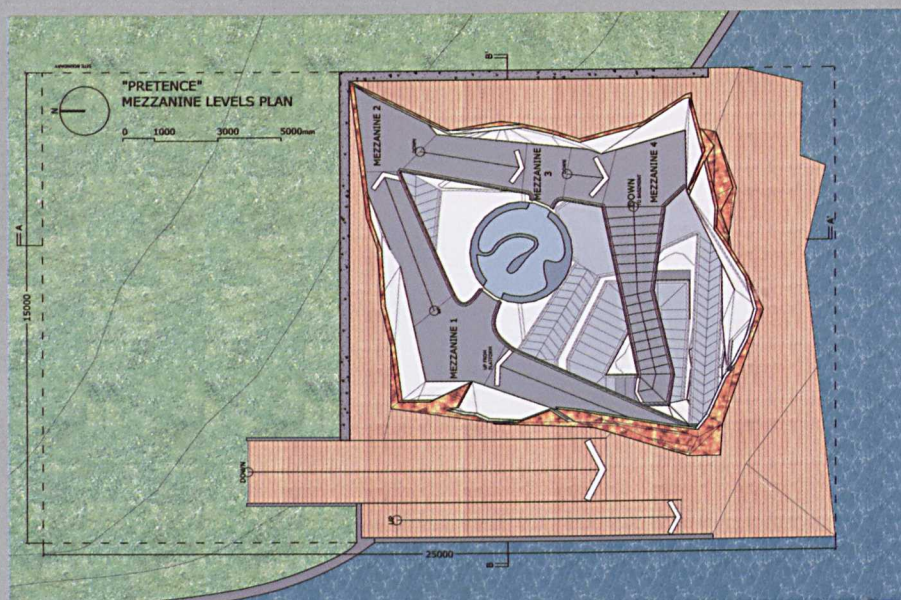
Transforming the deep psychoanalysis of a designer into a design has been considered as a valid design idea generator even though it is not an easy task. In the Darkside of the Moon Pavillion project, the aim is to design a structure that reflects the inner complex thought of the designer who hides behind a mask to appear powerful and covers the complex unknown force that has become the main driving force of his identity. Through his careful inquisition, Ping Fuan deconstructed the form and spaces triggered in his mind to reflect his constant wary and defensive identity. The deep interplay of light coming from the window strips and the shadow dramatically enforced the idea. His architecture of pretence demonstrated the importance of capturing human emotions deeply transcended in one's thought in order to produce high quality design.



Modular Morphogenesis

Mohammad Yazah Mat Raschid & Wan Srihani Wan Mohamed

The architectural simulation or morphogenesis process of integrative cell is fast becoming a new trend in architecture despite the widespread critics that consider the approach as bearing too much emphasis on the form and diminishing the functional aspects of a built environment. The main idea behind the process is to produce modular self-supporting and flexible structure in creating sustainable building enclosure. Here, Lee Ping Fuan manipulated the stem cell of human DNA to develop a modular cell that multiplies in controlled fashion, accommodating different functions and creates efficient environmental material and structural building envelope. The design approach opens up a new perspective in revolutionizing the modular fabricated material building technology that is flexible and requires less maintenance.



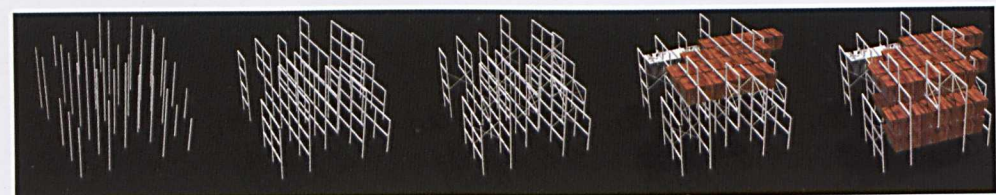
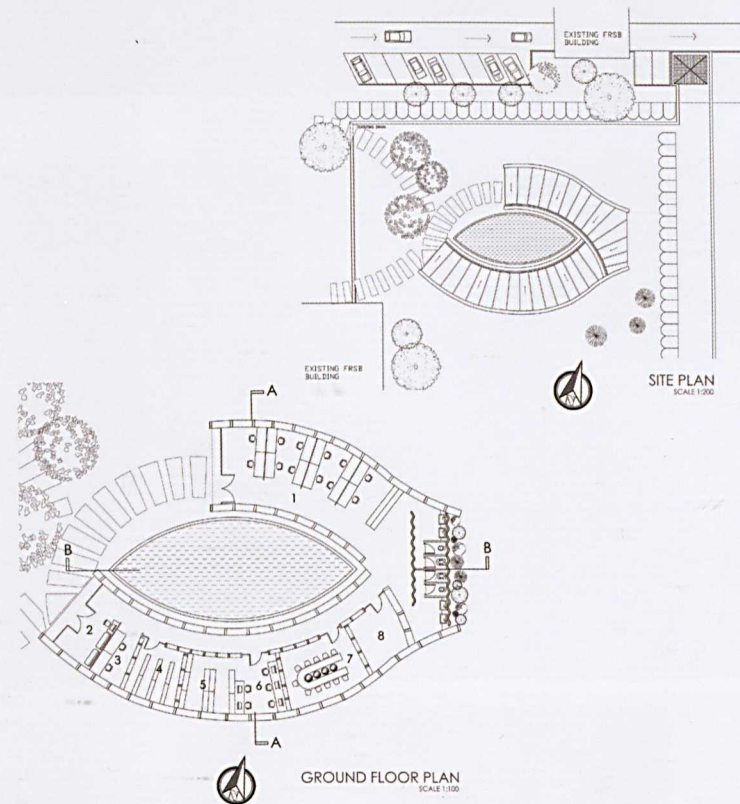
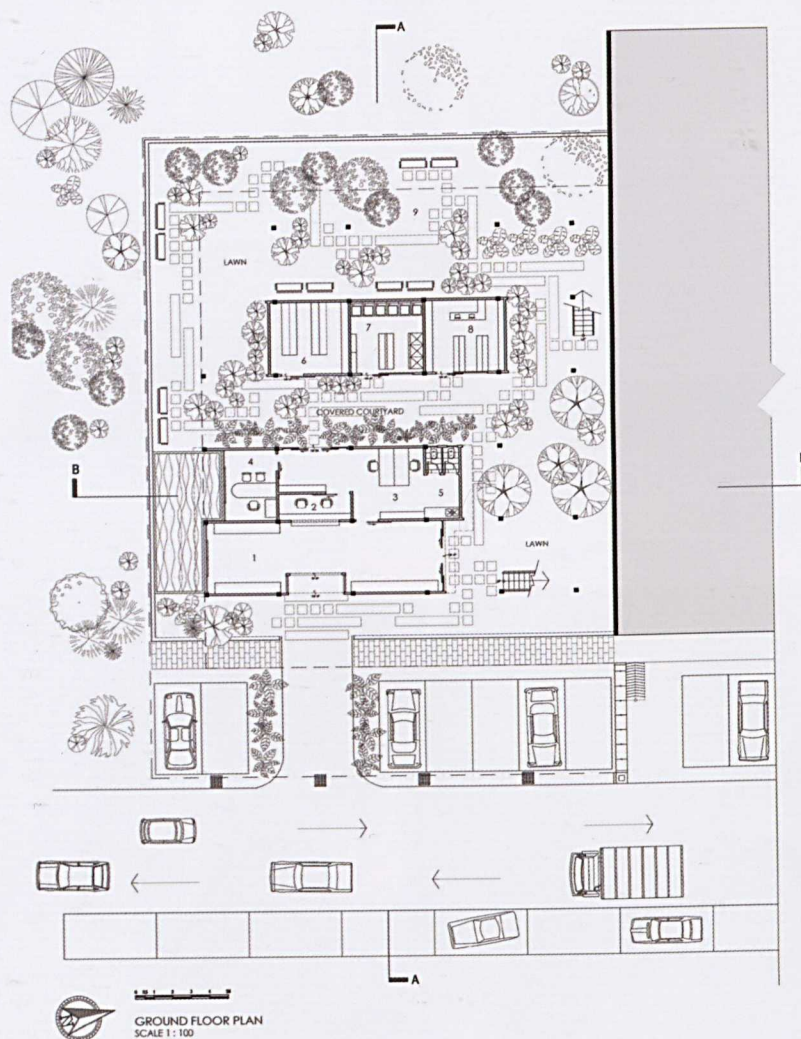
Lee Ping Fuan

Revolutionary Urban Camping

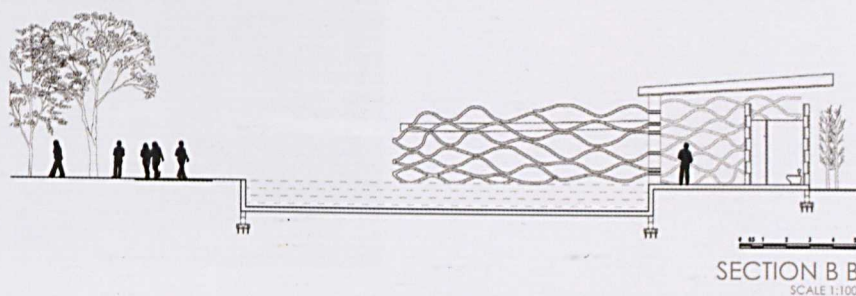
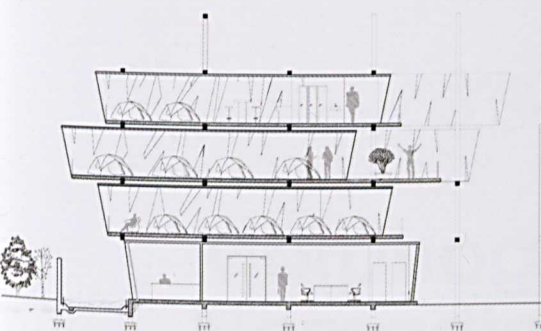
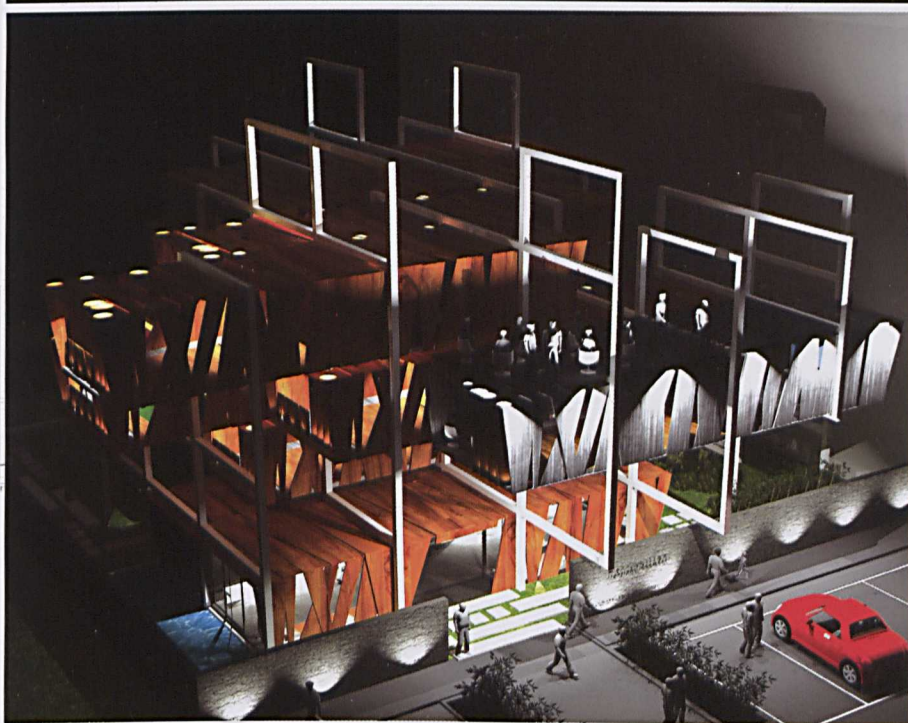
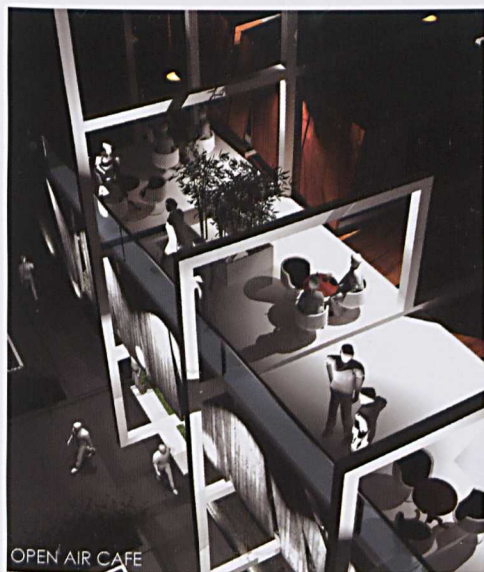
Mohammad Yazah Mat Raschid & Ida Suriana Ismail

A backpacker accommodation needs to facilitate a sense of authenticity or socio-cultural belonging to a particular surrounding - a notion that many similar types of building has fallen short in their design. The aim is to design a building that fosters the involvement of backpackers with the local environment and people. In transcending the notion, Lim Chee Hui merged nature and urban characteristics in built spaces that are intertwined together in the Penang Metropolitan

Transient's Tenement project. The narrow cocoon-like compartment creates the feeling of being secured while the fabric enclosure provides gaps for natural ventilation and lighting supported by simple skeleton post and beam structure. The project signifies the beauty of minimalist approach in designing a more sustainable backpacker's accommodation building typology.



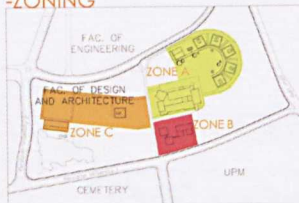
■ Lim Chee Hui





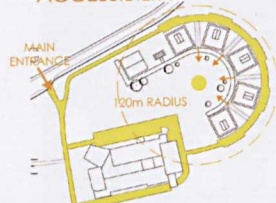
SITE ANALYSIS

-ZONING



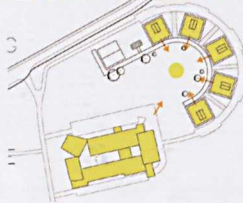
- ZONE A**
 -MAIN ZONE OF FACULTY WHERE ADMINISTRATION LOCATED
 -LARGEST / MOST IMPORTANT ZONE IN FACULTY
 -LOCATED MOST FACILITIES FOR STUDY AND RESEARCHES PURPOSES

-ACCESSIBILITY



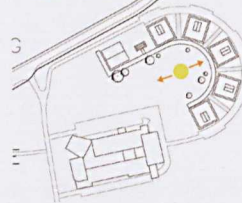
- EXISTING ACCESS ROUTE TO THE SELECTED SITE
 -ADEQUATE CAR PARKS NEAR SELECTED SITE
 -120m SHORT WALKING DISTANCE TO MAIN BUILDINGS

-SOCIAL INTERACTION



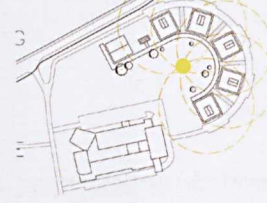
- SURROUNDED BY GALLERY AND LABORATORIES
 -EASE TO ACCESS AND EXCHANGING INFO FOR USERS

-VISUAL CONNECTION

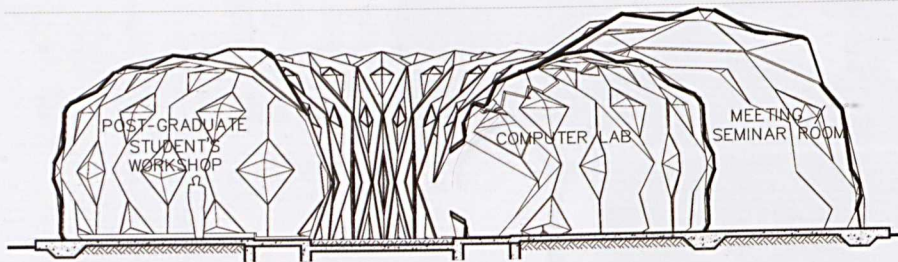


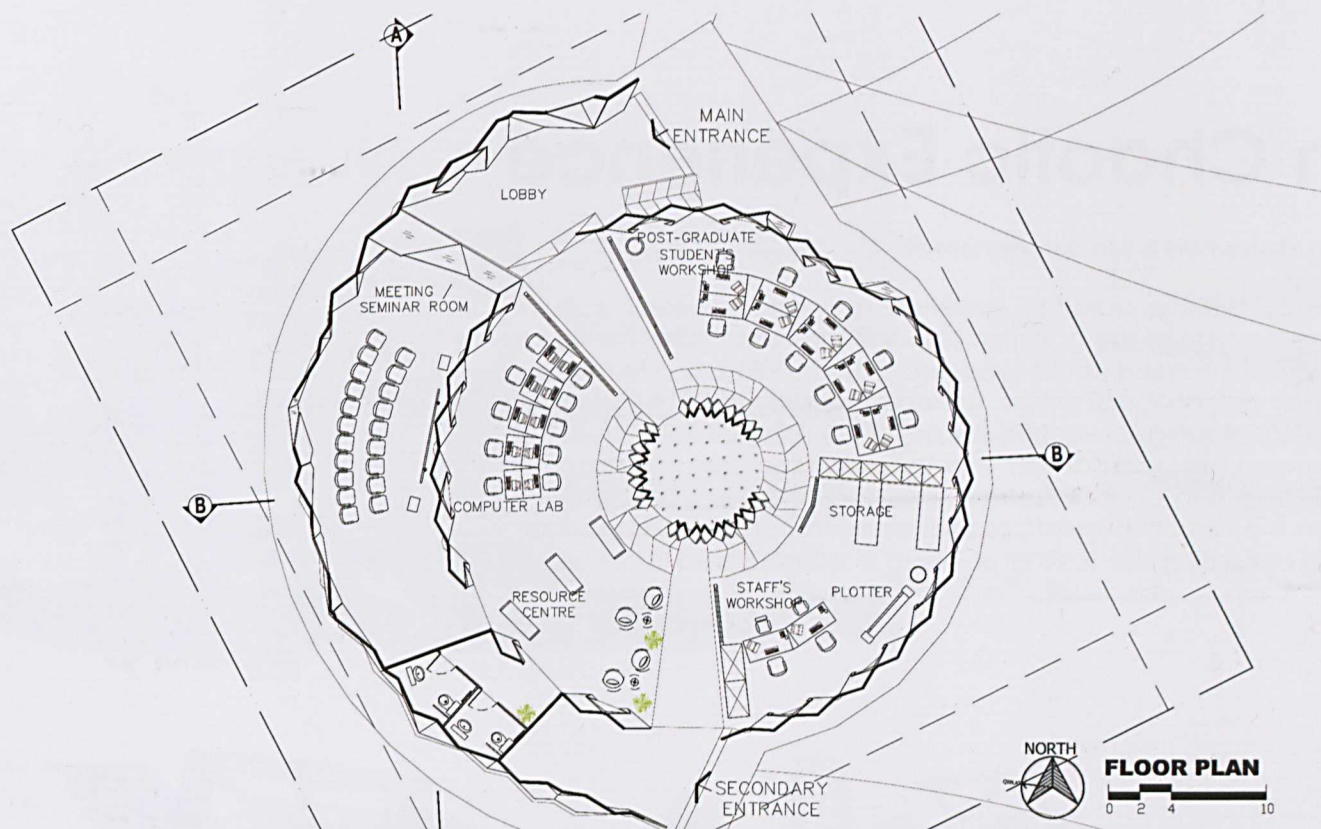
- MAIN ENTRANCE FACING EAST DECORATED WITH LANDSCAPING
 -OPENING AT THE WEST SIDE WHERE FACING GREEN

-SECURITY



- WITHIN DISTANCE TO OTHER BUILDING FOR NATURAL SURVEILLANCE
 -ENTRANCE ROUTE IS GUARDED

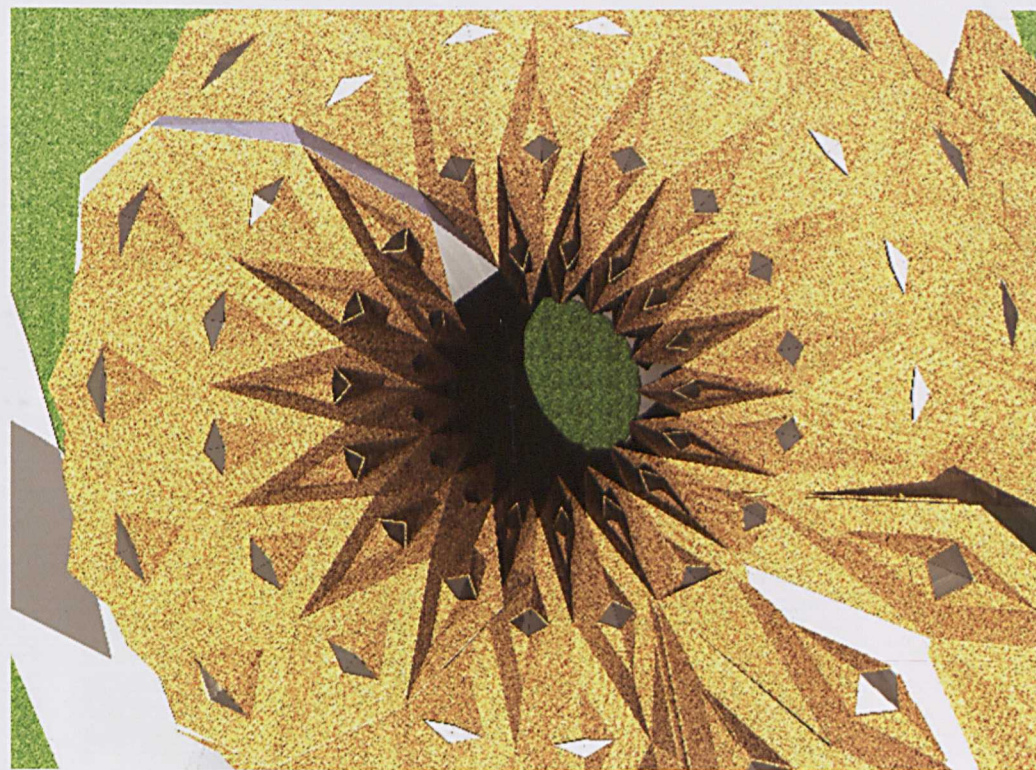




Morphogenic Nomadic Experience

Mohammad Yazah Mat Raschid

The idea of creating a nomadic experience in a built environment is to maximize the social and environmental experience of the users in a series of geographically attributed space in an open space planning covered by a modular building envelope system. The aim is to maximize space functions by minimizing the social and physical boundaries in the spaces created in the building programming. The morphogenic approach of Chan Chong Chong imitated and transformed the bio-cells of a leaf that are used as breathing walls which can perform different environmental functions; thus, giving the idea that the building is temporary in which the experience of nature and interaction with others can occur spontaneously. It signifies that the quality of nomadic spatial experience can be enhanced by material and technological adaptation from nature in a creative mode.

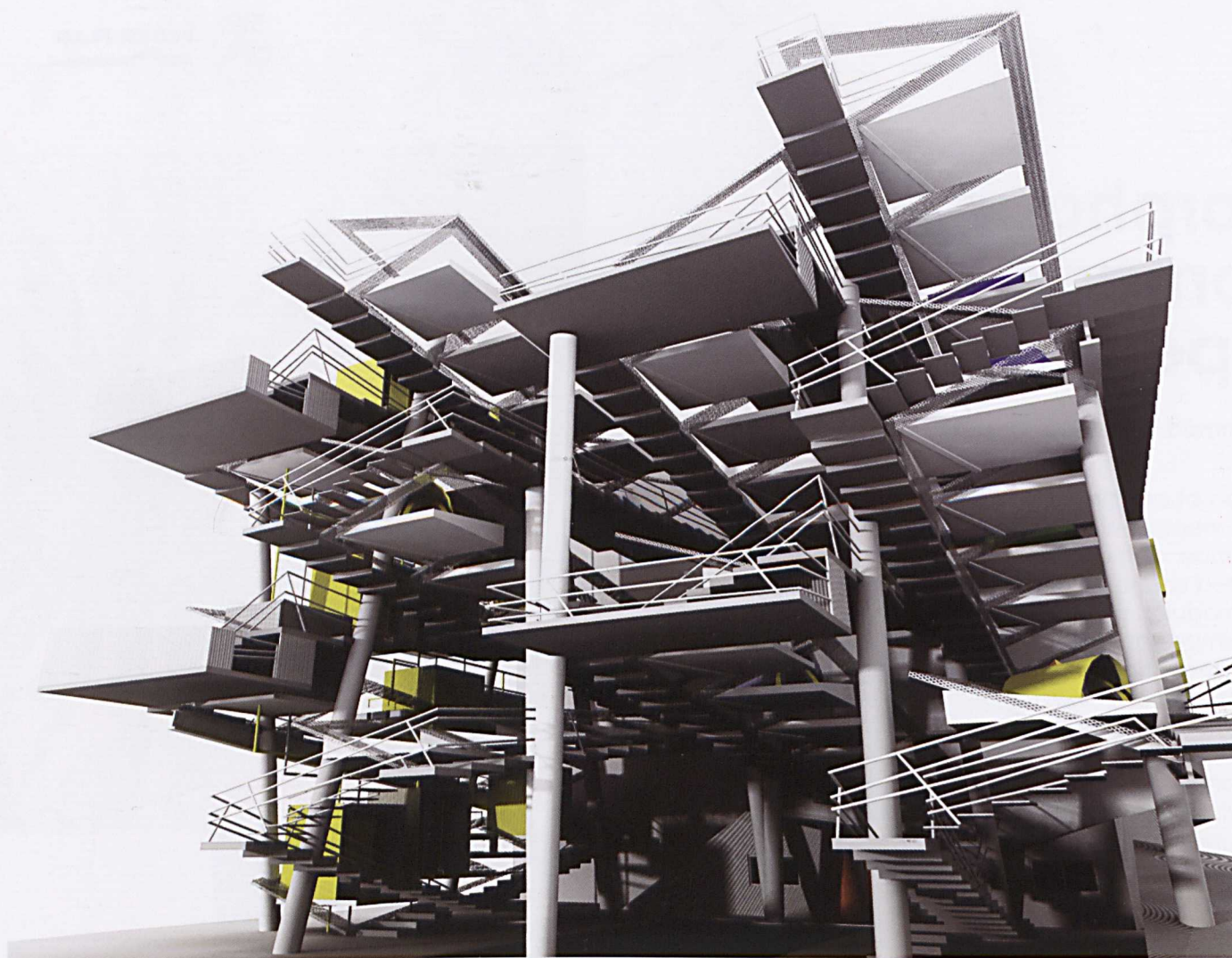
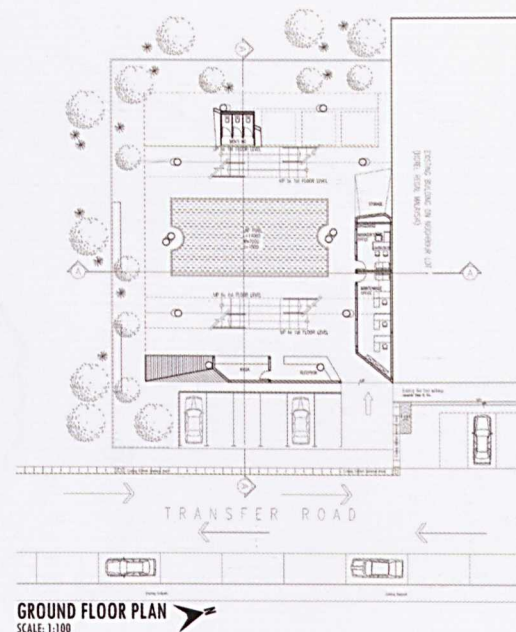


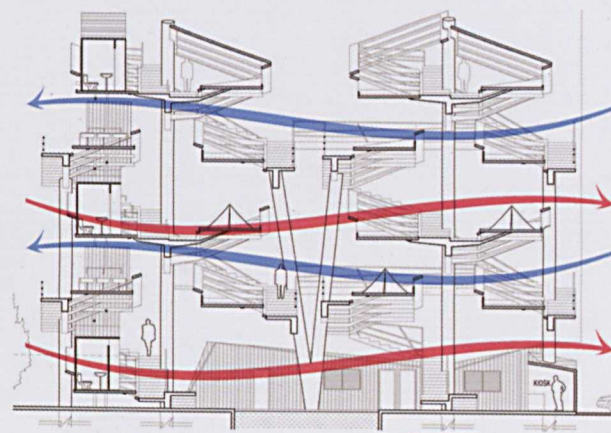
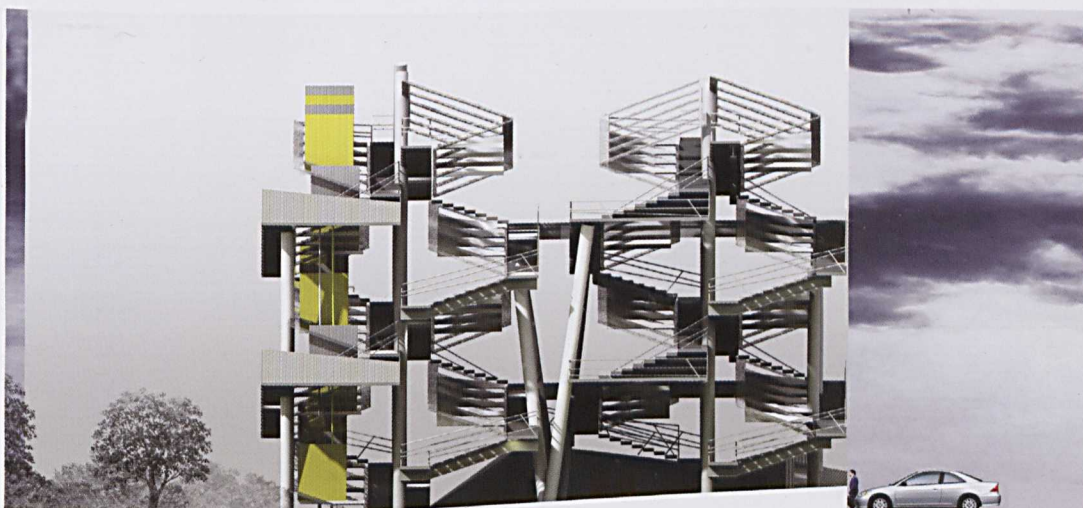
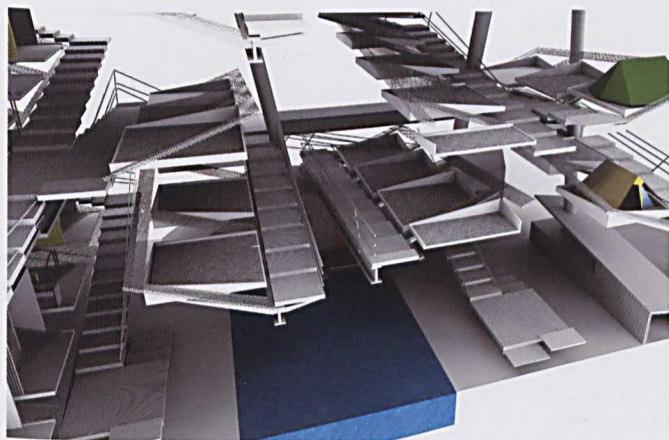
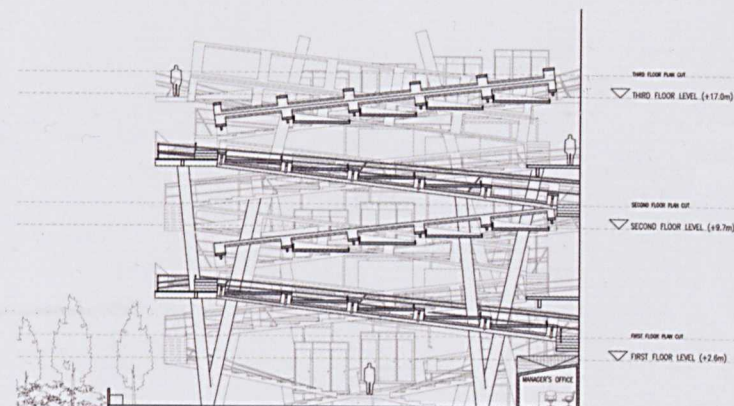
■ Chan Chong Chong

Urban Chaotic Experience

Wan Srihani Wan Mohamed & Ida Suriana Ismail

There is a need to strike a balance between two different socio-cultural backgrounds and lifestyles of the backpackers and the urban folks. The aim is to ensure that the backpackers could experience the building as a temporary escape of excitement and adventure of urban camping without feeling alienated. Wong Yau Huan approached this notion by using chaotic structural expression to connect the backpackers with the urban features. The exposed steel structure arranged in chaotic fashion with no enclosure walls and with high emphasis on the vertical circulations and environmental factors plays an important role in alleviating the feeling of being a transnational in an urban setting.





■ Wong Yow Han