

Transformation of a Living Territory

Mohd Fairuz Shahidan, Norsidah Ujang & Mohd Fabian Hasna

The concept of Transformation as a Living Territory is inspired by the term of flux. The design creatively plays with the flux movement and its flowing characteristic to link up the existing spaces and water bodies in order to congregate the ecological and human needs. The design also maximizes the appealing of outdoor spaces, turning them into a living territory. It forwards the concept of essential role of water in our living structure, whether visible or invisible. In

this design, new community spaces that are clean, pleasant, bustling with life and activities are created for sustainable community. This design stresses on the importance of water supply infrastructure to ensure efficient water system and positively contributes to the social, cultural and recreational quality of urban living for long term benefits.

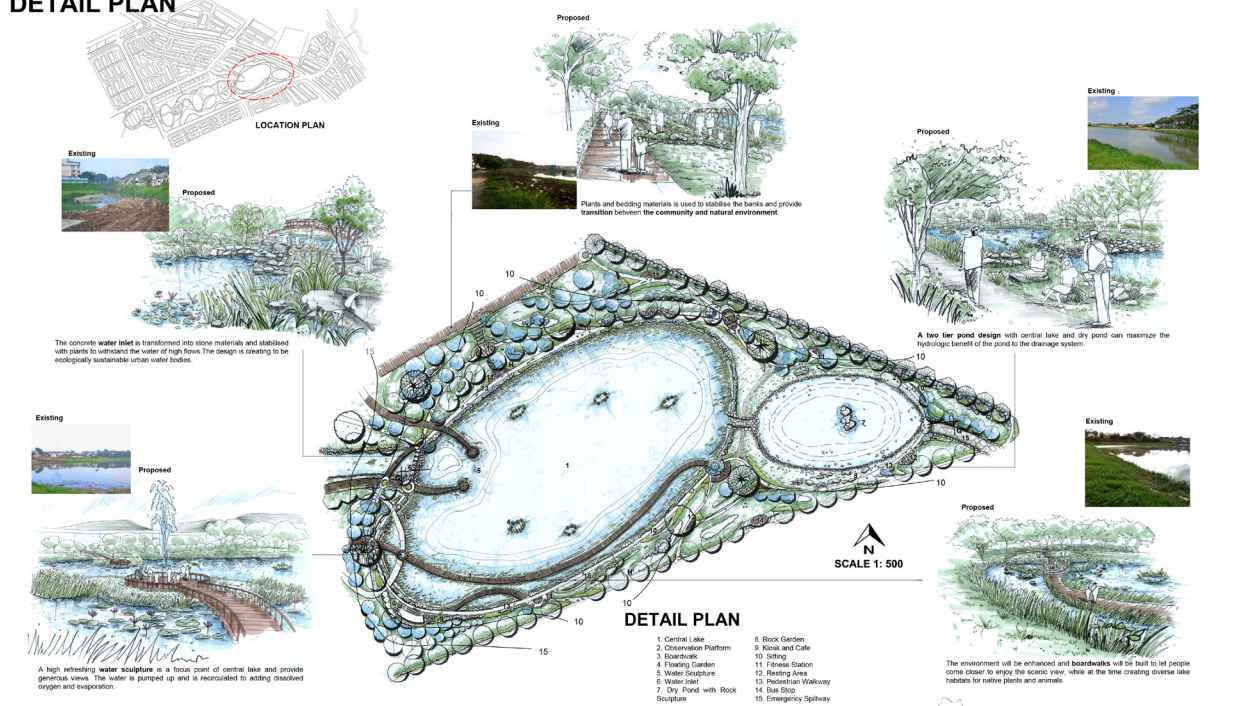


MASTER PLAN

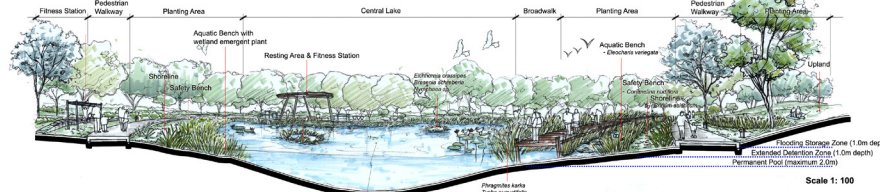
- | | |
|----------------------|-------------------------|
| 1. Green Cascade | 12. Children Playground |
| 2. Parking Area | 13. Waterfront Terrace |
| 3. Main Entrance | 14. Central Lake |
| 4. Drop off Station | 15. Water Sculpture |
| 5. Riparian Corridor | 16. Observation Deck |

■ Chen Fei Wen

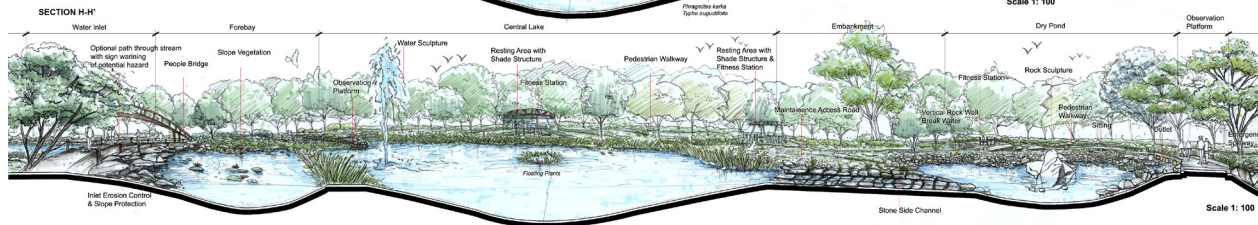
DETAIL PLAN



SECTION F-F'



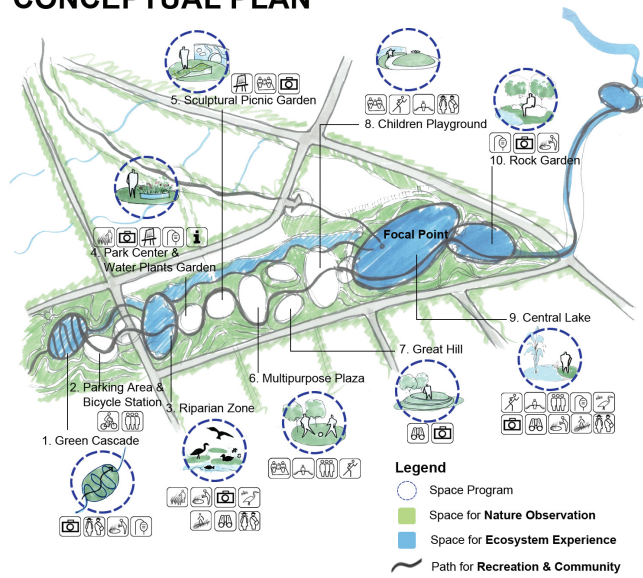
SECTION H-H'



PROPOSED LINEAR ECOLOGICAL PARK IN KULAIAYA, JOHOR: TRANSFORMATION AS A LIVING TERRITORY

CHEN FEI WEN 148734

CONCEPTUAL PLAN



SCHEMATIC PLAN



The Living Territory's Practices:

Diffusion- Green spreading, increase water quality and encourage ecological environment.

Volumetric- Best Management Practice is adopted in the neighbourhood.

Energy- Cultivating an eco-friendly environment and community, enhance the living quality of local urban dealer and significant identity of this territory.

