

# Revitalisation Urban Spaces

Mohd Yazid Mohd Yunos

The rapid increase in population, in conjunction with increase in the rate of urbanisation, had led to unplanned and uncontrolled expansion of urban landscape spaces in Malaysia. These eventually resulted in the gradual loss of open spaces in the city, due to increasing demand for built up area. Projects in the urban landscape design studio accentuate designing landscape as a livable space that exists in urban environment. These 4th year Bachelor of Landscape Architecture projects have exciting potentials in revitalising development in urban city by injecting 'Spirit of the Space' that make possible for changes to happen. The big challenge was how students need to design and accentuate the abandoned, failing and underutilised sites of grey fields with respect to the integrity of existing elements of value, cultural, historical and activities in the area. Grey field site normally yields lesser revenue or lower economical return due to being poorly maintained, their need for revitalization to suit the current trend of urban development is critical. Hence, efforts by the students to take up the challenge to turn these sites into profitable, vibrant, livable and exciting sites at par with their surrounding are much appreciated.

In realising this aspiration, four projects have been selected through a series rigorous selection and judgement. Among the works are the Revitalisation of Pudu Plaza, XY Greenery in Pekeliling area, Greyfield Redevelopment for the Plaza

Rakyat and Transformation as a Living Territory. These projects represent creative new design ideas and innovation to revive a strong emotion and inject new life for the dry and dying sites. As the spaces exist in the midst of rapid development in the city, the selected projects are chosen based on reality of the issues such as site uniqueness and environmental richness. The quest for creative and innovative urban landscape planning and design solution is urgently needed for creating solutions for better quality outdoor spaces and environment in the city.

Chio Kang Er in his proposal for the Pudu Plaza, Kuala Lumpur that was built in 1998, argues that the current environment of the plaza is monotonous with poor linkages, lack identity and lack the Genius Loci. His idea to revitalise the Pudu Plaza space by changing its ambience is rigorously brave and drastic. He applies the concept of 'Spirit of the Space' as the basis for design to accentuate users' experience to feel the spirit of the space, whether indoor or outdoor. The design highlights green building approach and promotes nature as entity that should be respected.

Nor Shida Abd Jalil works towards enriching the landscape at abandoned housing projects which are located at Jalan Tun Abdul Razak as known as Pekeliling

Flat. The lost of spirit and soul of the space was regarded as not vigorous for living. She highlights the XY Greenify concept by introducing green area vertically and horizontally in response to the limited space and high land value of the area. The XY Greenify concept means to integrate human needs with natural surroundings, by blending together the innovation of green building approach to reduce waste, energy and heat. Indeed, sustainability approach in her design is without doubt has maximized the potential of the natural surroundings such as the rivers and matured trees as articulated in her design ideas.

Yong Jia Yu committed his design on grey field revitalization for the abandoned Plaza Rakyat. He sees the unbound potentials of the Plaza Rakyat such as its activity, movement, building, heritage and visual elements. He highlights that the abandoned site of the Plaza Rakyat has directly caused space fragmentation and disconnection to its surrounding. From the aspect of movement, the site has too many dead-ends as roadways and pedestrian ways where people or vehicles are unable to move fluently from all directions. His site analysis and appraisal addressed the relevant aspects thoroughly, such as connectivity and linkages, activity, accessibility, microclimate, visual and historical. The design idea of 'Bond the Unbound' interprets the issues excellently to provide continuous flow and articulation of spaces to create the Integrated Transportation Hub. The hub functions

to form bonds with its surroundings, creating a more cohesive and harmony environment. The work is a noble attempt to deal with the emerging of public's needs to be incorporated into the design.

Chen Fei Wen project demonstrates the concept of Transformation as a Living Territory, playing with the flux movement and its flowing characteristic to connect the lost of existing spaces. Her idea is to create outdoor spaces as a part of a living territory that could enhance communal spaces. Her design also implies that water plays as essential role in human living environment which could create pleasant and tranquility in such bustling environment. This design captures the richness of the place and creates new exciting community spaces which eventually contributes towards a higher quality urban living.

In conclusion these selected projects represent the innovative thinking in the grey field revitalization in urban area and evoke quality ambience in the ever changing urban spaces. As a whole, these projects represent forward thinking, and outstanding innovative and creative thoughts to suit the current technological advancement and urban progress.

## Revitalization of Plaza Pudu

-Muhammad Hijaz Sanusi

Place and space are the main focus in this design concept. With careful and thorough study of the area, the designer captured the spirit of the place to be manipulated in his design. The proposed project is to create rich experience that is vital to give new meaning to the site which is already busy with lots of activities especially businesses. The design strategy involves combining building, outdoor and indoor environment to refurbish the area without neglecting its genius loci. However, the plant selection in terms of their canopy structures and root systems must be looked into as they will affect the building edges especially when the design involved crucial sites such as in-between buildings and roof top.

-Norliza Mohd Yusof

The designer's idea is promoting revitalization towards the Pudu Plaza; "spirit of space that able to persist despite of change". It is understood that the designer highlights his/her consideration on the changes of urban fabric at Pudu itself, but unfortunately, no descriptions made to this issue. In addition, the contextual study on urban fabric is not thoroughly explained, even though it is one of important matter for the project site. Another missing factor is a study of human behaviour which is another important aspect that the designer fails to explore since the design aims is to create "human place, living space". It is advisable that the designer strongly highlight the human behavioural pattern

in response to the current condition of Pudu Plaza. This vital aspect is left unexplained, and therefore, the design illustration and perspectives are perceived as typical. However, the general graphic communication is fine and presenting a 1:75 scale of section is a good approach to show details of the nooks and crannies. Taking into consideration the subject matters, this thorough study on urban design and responsive environment is encouraging indeed.

## XY Green Building

-Norliza Mohd Yusof

In general the designer has determined and excellently described the green features for a "green building" effort. Unfortunately, upon reviewing the detail elevations and sections of the developments, the green features failed to be determined because none of the development component emphasis all the aspects listed (highlighted) in the study. For example, in the study identified 'compost area' but the designated areas for composting were not shown in the development layout. Similarly, the designer explained the energy saving issues, for instant, using LED lighting, but again, its implementation is not shown in the development area. Apart from the weaknesses to address the green features in the development proposal, this is a good study to integrate landscape architecture with architecture.

# Jury Review

## Revitalization of Plaza Rakyat

-Kashino Naohiro

"Abandoned projects are harmful to the city" is not convincingly explained. Why traffic hub? The reason should be deeply analyzed and explained. The site relation with entire city traffic system need more studies for the new traffic hub. The concept tends to be hidden behind the repetition of the word "Bond". Sustainability seems a subsequent topic and the proposed urban context is well advanced. The designer illustrates a very good presentation although it seems that the Asian/authentic uniqueness quality is not enhanced. The work also displays smooth sequence to lead the story.

-Marek Kozlowski

This work addresses well the issues of neglected spaces, with good in depth analysis and justification for the project and well stated goals and objectives. The idea to utilize a transport hub by connecting an existing bus system with the LRT system and creating a public space above is a good and innovative design approach. The proposal addresses well the physical pedestrian connectivity to other parts of the city. The ESD principles and detailed landscaping design solutions further strengthen the project. It also shows good design creativity and cutting edge approach aimed at utilizing the neglected urban area around existing transport modes. However, the design should also address the issue of building street interface and is recommended to include active building frontages for all buildings facing the new public space. Overall, the designer shows a very good presentation and the good attention to details clearly communicates the main and detailed ideas of the design proposal.

## Transformation as a Living Territory

-Muhammad Hijaz Sanusi

Storm water management is vital especially in current rapid urbanization and unpredictable climate. Rapid urban development without a proper storm water management system will create flood to an area. This project took the challenge in incorporating the storm water management and green space for the benefit of the people. A good analysis and synthesis of this site provide good foundation and understanding on the site. The objectives and goal are well derived and interrelated. Thus, this well designed and planned project is feasible to improve the quality of life of the residents at the area. The designer has also come out with good presentation to communicate the design ideas.

-Norliza Mohd Yusof

Am amazed with the study of storm water ecology that is used conceptually as part of landscape features. By reviewing the design concept, illustration and ideas, I believe that the designers had really understood the project contents and transforming it into a beautiful garden. The hand drawn illustrations show the "natural" touch and it is (indirectly) generating the 'natural' mood of the proposal. The concept vocabulary "FLUX"; that is focusing on managing and organizing storm water by adopting integration of engineering methods and wetlands system is an excellence work. I believe this transformation is creatively described in all the illustration proposals.

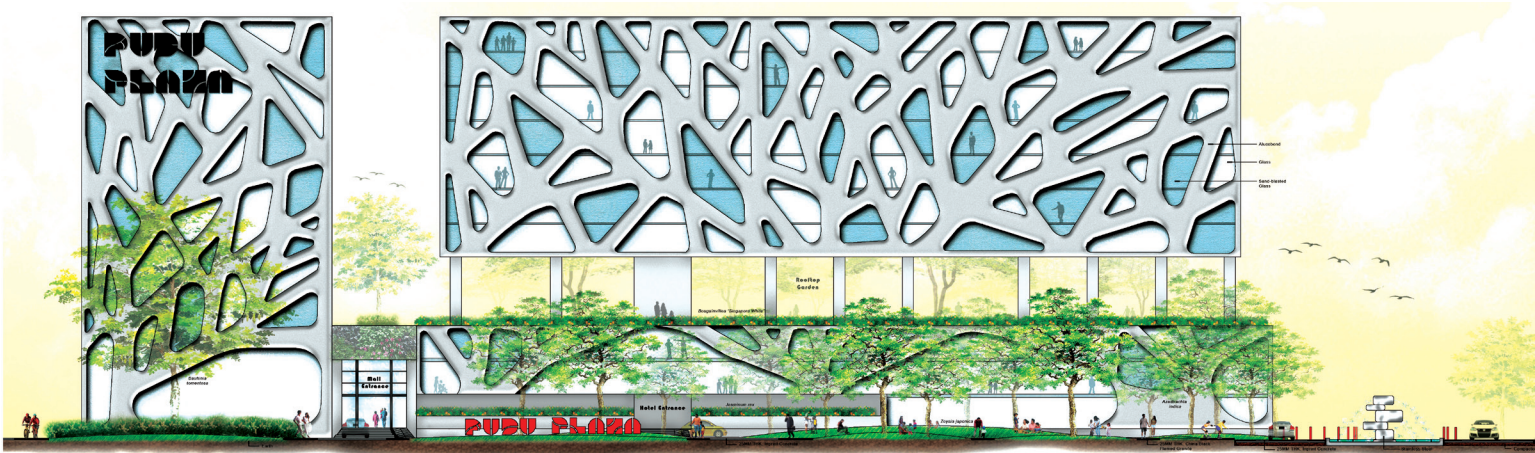
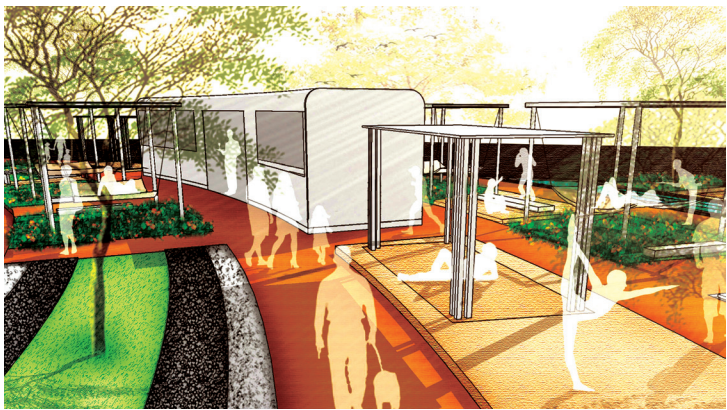


# Revitalization of Pudu Plaza

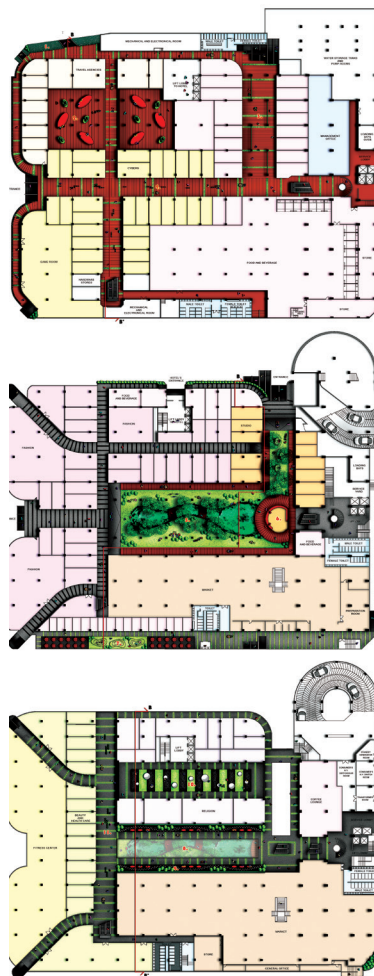
Osman Mohd Tahir, Faziawati Abd Aziz, Noor Azizi Mohd Ali & Nordin Abd Rahman

Pudu Plaza, Kuala Lumpur, built in 1988, during its glory period provides the first mixed development building. However it is observed that currently the plaza is wearisome with poor linkages, spiritless appearance and lack of identity. Thus, this project embarks to revitalize the Pudu Plaza and its surrounding by injecting the 'Spirit of the Space' that enable it to persist along with the changing ambience. In transforming this goal, the concept of "Human Place and Living Space" is being introduced. PLACE as 'pause' area with variety of elements that create SPACE which allows 'movement' for the people to experience the genius loci, enjoy the environment and capture the sense of

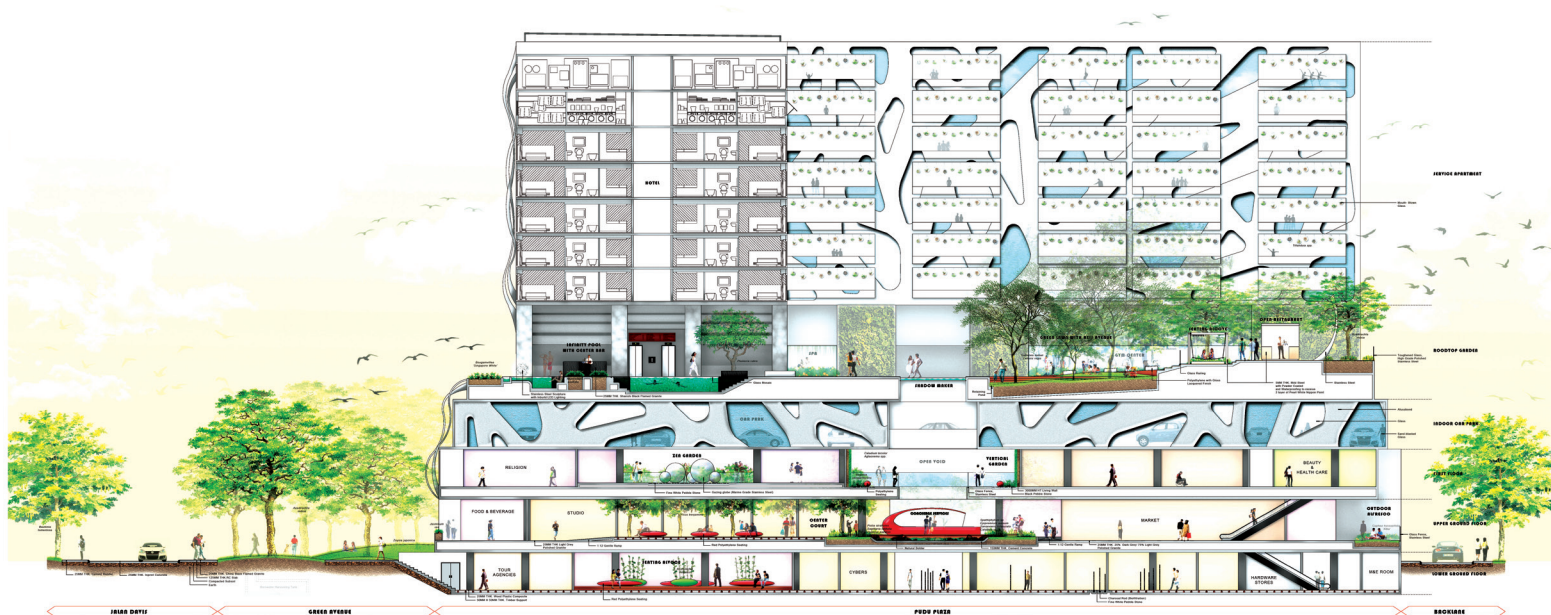
belonging. The design incorporates the enhancement of the building façade and green building approach within the outdoor and indoor environment. The public open shopping mall and the rooftop podium created in the indoor space aim to unify with the outdoor environment of different experiences thus allowing users to have stronger emotion towards the place and spatial qualities. Hence, it is strongly belief that this inspiration will revive and push the Pudu Plaza to thrive along the vibrant progression of Kuala Lumpur towards becoming a World Class City.







■ Chio Kang Er



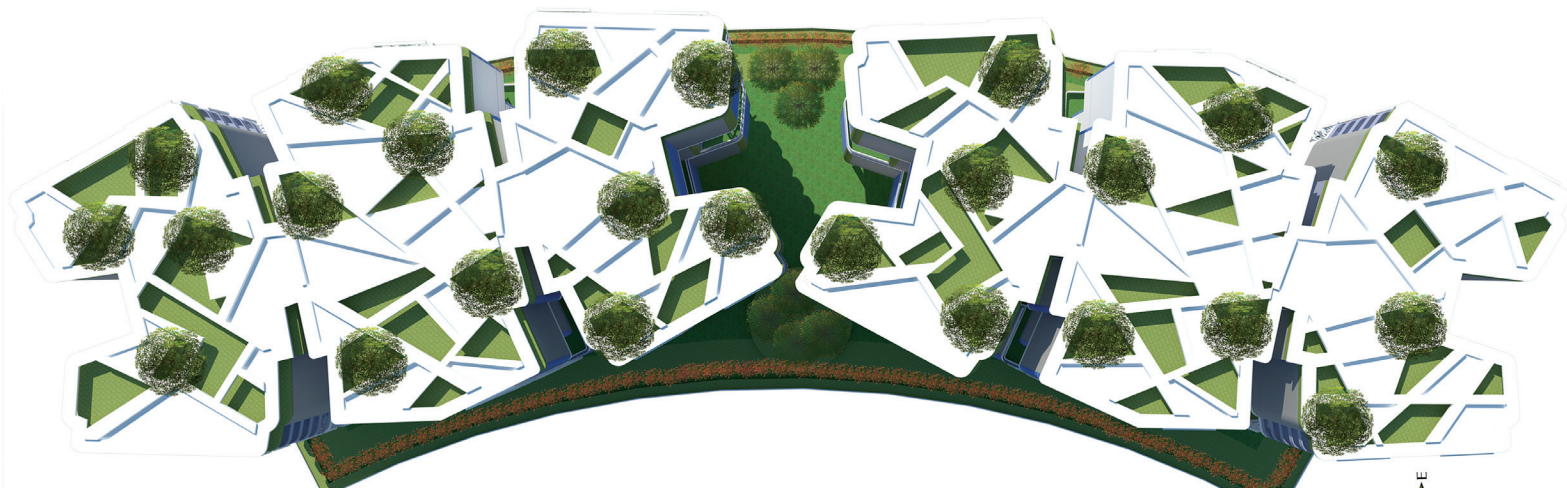
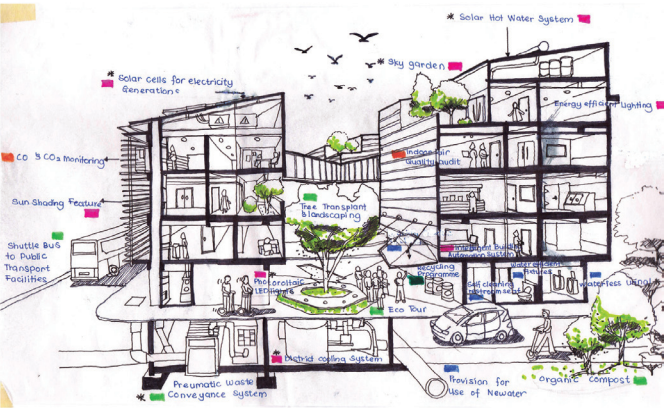


# XY Greenery in Pekeliling Area

Kamariah Dola, Mohd Johari Mohd Yusof & Aini Jasmin Ghazalli

This work attempts to give a new lease of life to abandoned housing projects located in the prime area of Kuala Lumpur at Jalan Tun Abdul Razak. It is formerly known as Pekeliling Flats. The original buildings were flats built in 1960s, They are regarded not fit for living, an eyesore and outdated. Considering the high land price and high accessibility to major locations, this project could also reflect the dynamic of Malaysian progress towards becoming developed nation. The concept of XY Greenify carries the meaning of weaving the needs of people and environment as well

## GREEN BUILDING







as implementing green vertically and horizontally. Greenify means to create green living and creating earth friendly community by balancing human's needs with natural surroundings. The designer chooses to allocate this prime site for residential blocks to cater the need to house the increasing city population. The new housing blocks apply the concept of green building which reduces waste and energy as much as possible. The layout of the buildings and surrounding landscape, including rooftop gardens were carefully designed to reduce heat. Solar cells for electricity generation, rainwater harvesting, adjustable louvers sky café, community plaza and community garden areas are among other interesting innovative design features proposed to inject exciting quality living for the community in and around the area. In addition, the project focuses on maximizing the potential of the natural and man-made surrounding including the rivers and matured trees and built facilities such as close proximity to public transportation. The XY Greenify emerges as a project that balances functionality, aesthetic and practicality.



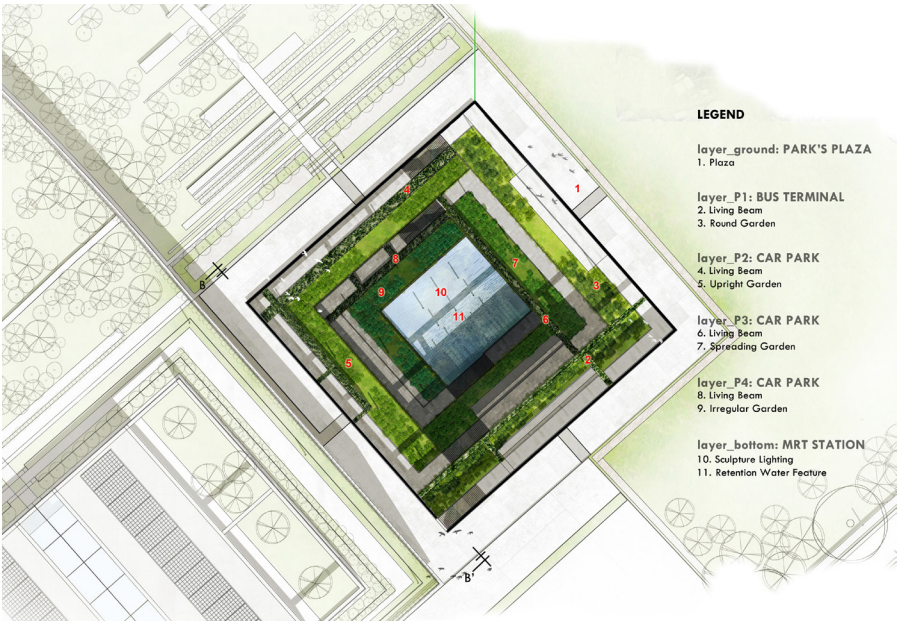
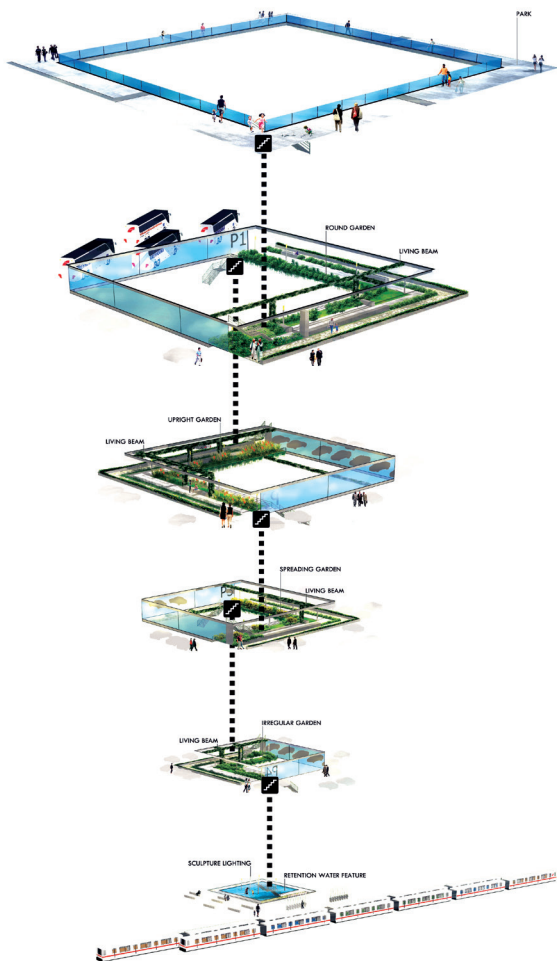


# Revitalization for Plaza Rakyat

Mohd Yazid Mohd Yunos, Asraf Abd Rahman & Zainal Syahrizal Zainal Abidin

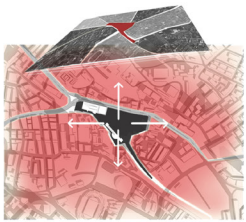
The design intends to revitalize the abandoned Plaza Rakyat to be established as active transportation networks that integrate public transportation networks into and out the city. It combines outdoor and indoor parks for more comprehensive and interesting surroundings with practical usages. 'Bond the Unbound' is an interpretation of the ideas of the Integrated Transportation Hub to be seen as a major force to help in creating bonds with its surroundings in term of the space, movement, building, heritage as well as visual aspects. The hub is designed to create more cohesive and harmony environment which emphasizes on the horizontal connections and its surrounding linkages. In addition, the vertical bonding of the structure of Green Atrium helps in

linking the bus terminal, car parks, gardens, parks as well as MRT station together so that it functions as the focal point that creates spatial relationships with the surrounding districts. This urban project promotes a strong and vibrant design infuses with green technology ideas within the structures such as rainwater retention and recycling, reduced surface runoff, improved air quality, vertical green, natural lighting and ventilation as well as alternative supply of electricity. The overall work challenges the current practice in landscape architecture and with much urban design wisdom and creativity.



## LEGEND

- layer\_ground: PARK'S PLAZA
- 1. Plaza
- layer\_P1: BUS TERMINAL
- 2. Living Beam
- 3. Round Garden
- layer\_P2: CAR PARK
- 4. Living Beam
- 5. Upright Garden
- layer\_P3: CAR PARK
- 6. Living Beam
- 7. Spreading Garden
- layer\_P4: CAR PARK
- 8. Living Beam
- 9. Irregular Garden
- layer\_bottom: MRT STATION
- 10. Sculpture Lighting
- 11. Retention Water Feature



**UNBOUND 1 \_ SPACE**  
space fragmentation...



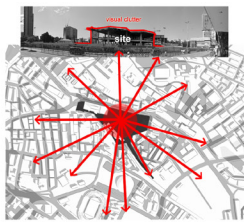
**UNBOUND 2 \_ MOVEMENT**  
no movement continuity...



**UNBOUND 3 \_ BUILDING**  
no building connectivity...



**UNBOUND 4 \_ HERITAGE**  
no heritage transition...



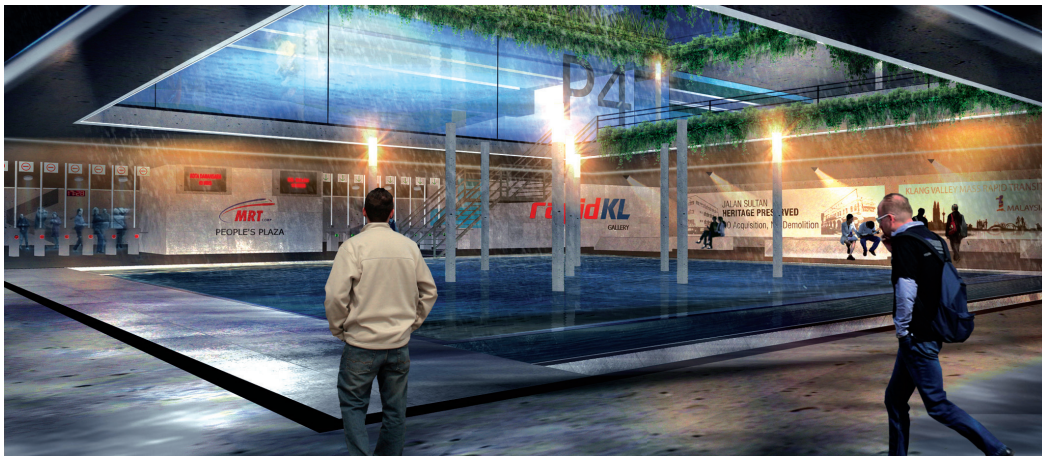
**UNBOUND 5 \_ VISUAL**  
no visual linkage...



**REVEALING \_ POTENTIALS**



**MATCHING \_ SURROUNDING  
MAIN ACTIVITIES**



Yong Jia Yu



# Transformation of a Living Territory

Mohd Fairuz Shahidan, Norsidah Ujang & Mohd Fabian Hasna

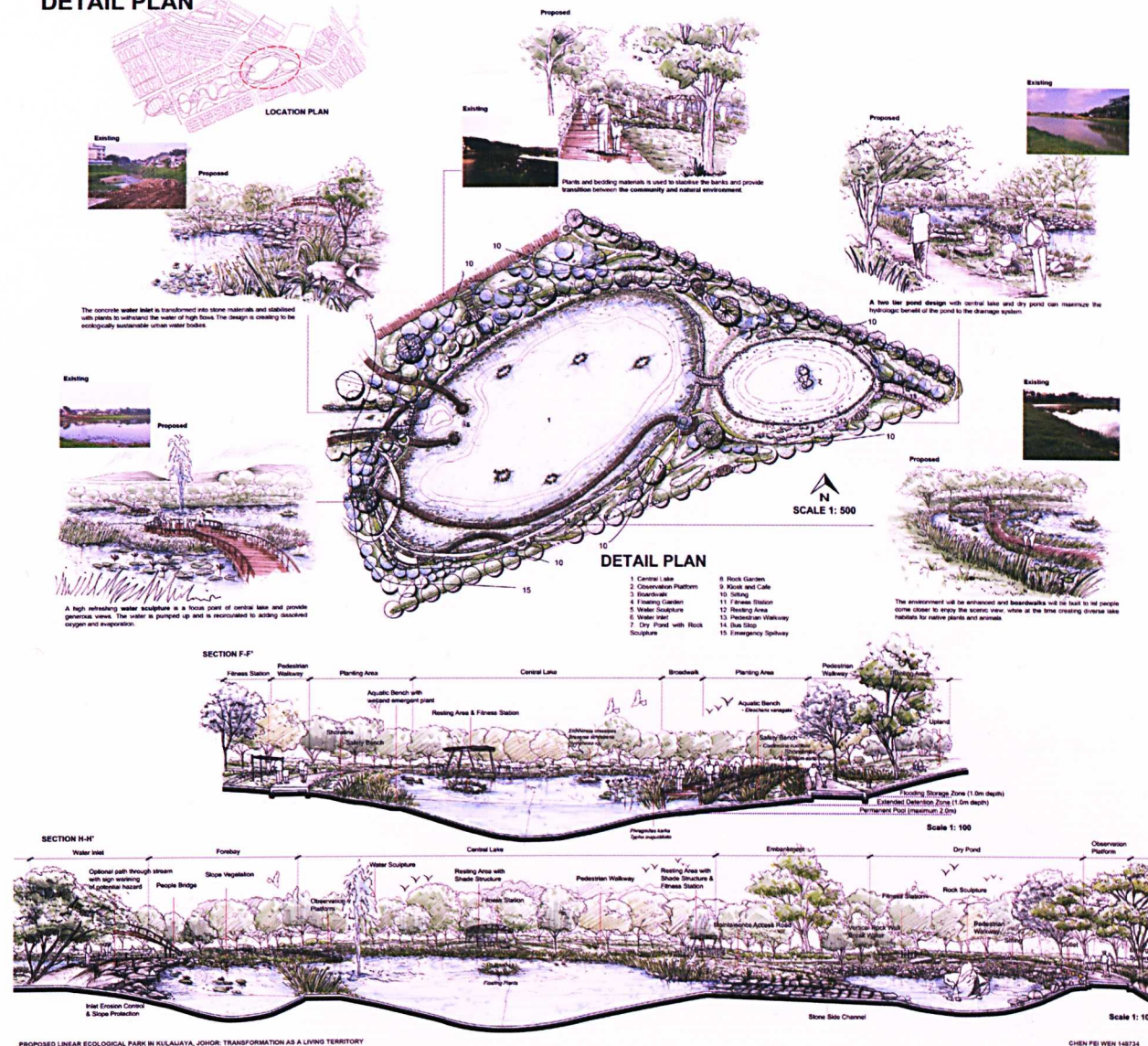
The concept of Transformation as a Living Territory is inspired by the term of flux. The design creatively plays with the flux movement and its flowing characteristic to link up the existing spaces and water bodies in order to congregate the ecological and human needs. The design also maximizes the appealing of outdoor spaces, turning them into a living territory. It forwards the concept of essential role of water in our living structure, whether visible or invisible. In

this design, new community spaces that are clean, pleasant, bustling with life and activities are created for sustainable community. This design stresses on the importance of water supply infrastructure to ensure efficient water system and positively contributes to the social, cultural and recreational quality of urban living for long term benefits.

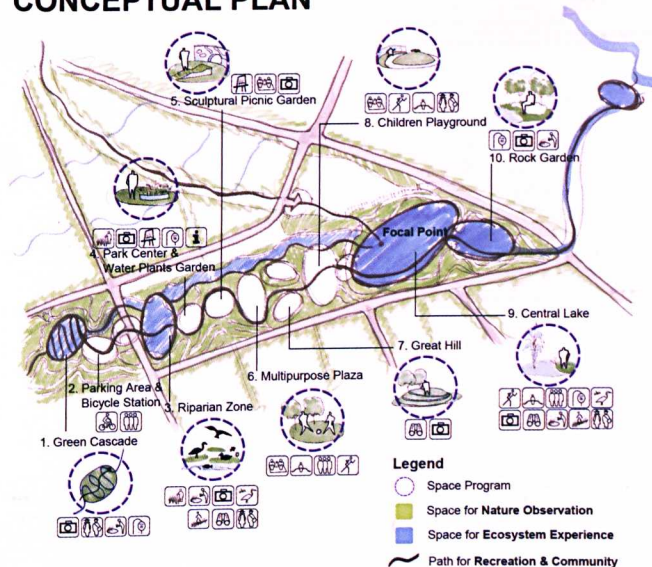




## DETAIL PLAN



## CONCEPTUAL PLAN



## SCHEMATIC PLAN



### The Living Territory's Practices:

**Diffusion-** Green spreading, increase water quality and encourage ecological environment.

**Volumetric-** Best Management Practice is adopted in the neighbourhood.

**Energy-** Cultivating an eco-friendly environment and community, enhance the living quality of local urban dealer and significant identity of this territory.