

Pathological Evaluation of Subchronic Administration of *Moringa Oleifera* Ethanolic Leaf Extract on Mice

Abdullahi Aliyu^{1,2,3,*}, Mohd Rosly Shaari⁴, Nurul Syhahirah Ahmad Sayuti^{2,5},
Mohd Farhan Hanif Reduan^{2,6}, Shanmugavelu Sithambaram⁴,
Sajjarattul Nurul Nadia Asyura⁴, Mohamed Mustapha Noordin², Qais Al Rawahi¹,
Adamu Abdul Abubakar¹, Khozirah Shaari⁷, Hazilawati Hamzah^{2,*}

¹Department of Veterinary Medicine, College of Applied and Health Sciences, A'Sharqiyah University, 400 Ibra, Sultanate Oman

²Department of Veterinary Pathology and Microbiology, Faculty of Veterinary Medicine, Universiti Putra Malaysia, 43400 Serdang, Selangor, Malaysia

³Department of Veterinary Pathology, Faculty of Veterinary Medicine, City Campus Complex, Usmanu Danfodiyo University, 840212 Sokoto, Sokoto State, Nigeria

⁴Animal Science Research Centre, Malaysian Agricultural Research and Development Institute Headquarter, 43400 Serdang, Selangor, Malaysia

⁵Department of Basic Medical Sciences, Faculty of Dentistry, Aimst University, 08100 Bedong, Kedah, Malaysia

⁶Department of Paraclinical Studies, Faculty of Veterinary Medicine, Universiti Malaysia Kelantan, 16100 Kota Bharu, Kelantan, Malaysia

⁷Laboratory of Natural Products, Institute of Bioscience, Universiti Putra Malaysia, 43400 Serdang, Selangor, Malaysia

*Correspondence: abdullahi.aliyu@asu.edu.om (Abdullahi Aliyu); hazilawati@upm.edu.my (Hazilawati Hamzah)

Submitted: 22 November 2024 Revised: 20 December 2024 Accepted: 23 December 2024 Published: 31 December 2024

Objectives: This research evaluated the consequences of repeated administration of *M. oleifera* ethanolic leaf extract (MOEL) orally on kidneys, liver and the blood of female Institute of Cancer Research (ICR)-mice.

Methods: Fifty (50) 8-week-old female mice were assigned into 5 groups of 10 mice each: groups 1 (control), 2 (125 mg/kg), 3 (250 mg/kg), 4 (500 mg/kg) and 5 (1000 mg/kg) for the sub-chronic toxicity studies of the extract. A 90-day repeated daily oral doses of MOEL extracts were administered to each mouse in the treatment groups through oral gavage. However, distilled water was administered to the control group (group 1). The mice were euthenised at the end of the experiments to collect and analysed samples.

Results: An obvious ($p < 0.05$) elevation in the levels of alanine aminotransferase (ALT) was observed in group 5 (437.50 ± 28.63 U/L) compared to 1 (239.10 ± 22.50 U/L), and then a significant ($p < 0.05$) elevation in aspartate aminotransferase (AST) concentration in group 5 (355.90 ± 26.45 U/L) compared to 1 (207.90 ± 19.67 U/L). Histopathological evaluation of the liver revealed a moderate liver degeneration indicated by moderate vacuolation of the cytoplasm in group 5 (1.70 ± 0.24) compared to 1 (0.35 ± 0.18), as well as mild hepatic necrosis characterised by mild eosinophilic cytoplasm (1.10 ± 0.3) of the hepatocytes in group 5 compared to 1 (0.00 ± 0.00). There was also a moderate renal cytoplasmic vacuolation in group 5 (2.20 ± 0.08) compared to 1 (0.00 ± 0.00). Moreover, a moderate to severe kidney necrosis indicated by significant ($p < 0.05$) eosinophilic cytoplasm was observed in groups 4 (1.95 ± 0.09) and 5 (2.45 ± 0.05) compared 1 (0.00 ± 0.00), pyknosis (0.90 ± 0.27) and karyolysis (0.60 ± 0.26) were significantly ($p < 0.05$) higher in groups 4 (1.15 ± 0.34) and 5 (1.75 ± 0.24) compared to 1 (0.00 ± 0.00).

Conclusions: It is concluded from this study that MOEL extract at high dose of 1000 mg/kg is associated with hepatic and renal toxicity in ICR-mice.

Keywords: sub-chronic toxicity; *Moringa oleifera*; hepatotoxicity; nephrotoxicity

Introduction

Moringa oleifera Lam of the Moringaceae family, is commonly called Horseradish, Drumstick or Ben oil tree in English and Pokok Kelor in Malay. It is a versatile pharmaceutical plant that is generally used in traditional Medicine [1]. The plant is naturally found in the Indian subcontinent, and Pakistan. Additionally, the plant is broadly grown in the African countries, Malaysia, India, Sri-Lanka, Mexico, America and the Philippines. The plant is likewise used

in industries, as food (leaf and pods), and as a wholesome herb. In addition, the leaves, seeds, bark, sap, roots, oil and flowers parts of the plant have been reported to have important pharmacological activities [2]. Furthermore, the plant is important as food additive and phyto medicine for the cure of numerous illnesses, including starvation microbial, hyperlipidemic, cancer, hepatitis, arthritis, prostrate problems, rheumatism, etc., [2]. The pharmacological effects connected with *M. oleifera* could be due to the various phytocompounds present in various parts of the plant re-

ported earlier; including phenolic compounds, carotenoids, flavonoids, polyphenol and vitamins [3,4].

Nevertheless, there is dearth of information on the toxic effect of long-term repeated administration of the ethanolic leaf extract of the plant on some vital organs, including kidneys and liver on laboratory animals. This is particularly imperative, because treatment of several chronic illnesses such as cancers involved repeated administration of the treatment for a longer period of 3 months or more [3]. A previous study from our research group [3] has shown that repeated daily administration of *M. oleifera* ethanolic leaf extract for as long as 28 days can have a toxic effects on the liver and kidney of mice [3]. It is therefore very necessary to assess the safety levels of this plant when administered repeatedly for 3 months, so that appropriate and safer doses for future treatment of chronic diseases in both humans or animals subjects could be suggested.

This research therefore was designed to investigate the effect of 3 months repeated daily administration of different doses of *M. oleifera* ethanolic leaf extract (MOEL) on the blood, liver and kidney of Institute of Cancer Research (ICR)-mice. The findings from this research would be valuable in the assessment of the plant's safety and the importance of plant natural products in healthcare management and medicine.

Materials and Methods

Plant Materials

The Institute of Bioscience, UPM provided the fresh leaves for this research. The leaves were processed as reported earlier by Aliyu *et al.* [3].

Botanical Identification

Botanical identification of the plant was conducted by Dr. Mohd Firdaus Ismail, at the Institute of Bioscience (IBS), UPM with the voucher number: (SK3168/17) been deposited at the herbarium, UPM.

Extraction Procedure

The plant was extracted according to the method explained by [2,3,5,6] with some adjustments.

Sub-Chronic Toxicity Evaluation of *Moringa Oleifera* Ethanolic Leaf Extract

The research were carried out according to the guidelines described by the Organisation for Economic Co-operation and Development (OECD) 408 [7–10] with slight modifications [11]. The mice for this research were purchased from a market vendor from Selangor, Malaysia. The animals were subsequently kept at the Animal Metabolism, Toxicology and Reproductive Centre (AMTREC), Malaysian Agricultural Research Development Institute (MARDI), Serdang. An optimum housing condition with temperature of 22–25 °C, relative humidity

(40%–70%) and a cycle of 12 h light/12 h dark was used to acclimatize the mice as described earlier [3,11–13].

Fifty (50) 8-week-old female mice were allocated at random to five groups (1–5) of ten mice each using RCBD (randomized complete block design). Group 1 was given distilled water and used as control. The remaining four groups including groups 2, 3, 4 and 5 were respectively treated with 125, 250, 500 and 1000 mg/kg MOEL extract [suspended in 5% dimethyl sulfoxide (DMSO)]. The extract was given at the ratio of 1 mL/100g body weight daily once for 90 days via oral gavage using a stainless steel needle [3,11,13]. The mice were carefully monitored for any symptoms of toxicity and were then euthenised on day 91 of the research by the use of CO₂ chamber [3,11–13].

Analysis of Weekly Body Weight Gain

The bodyweight of each group of mice was monitored weekly by an electric weighing scale and documented as reported hitherto [3,9,11,13].

Samples Collection

The mice were euthenised on days 91 of the research, using CO₂ chamber (Labquip Sdn. Bhd, Malaysia) [3,11–14]. Blood samples were obtained through cardiac venipuncture by as reported previously [11], and transferred to clean anticoagulated (EDTA) sample bottles. The samples were then used to analyse haematological and biochemical parameters of the mice [15,16].

Post-mortem was done on each of the mice and tissue specimens from the kidneys, liver, heart, spleen, brain, uterus and lungs, were collected and analysed accordingly [3,12–14].

Haematological Analyses

The method described earlier [3,11–14] was adopted. The anticoagulated blood samples obtained earlier were transported to the Universiti Putra Malaysia, Faculty of Veterinary Medicine, Haematology and Clinical Biochemistry Laboratory, ice packs and evaluated for full blood count (FBC) using automated haematology analyser (ABC Vet®, ABX Diagnostics, Port-Saint-Louis-du-Rhône, France). The factors evaluated included total white blood cell count, total red blood cells count, haemoglobin concentration, platelet count, mean corpuscular haemoglobin concentration (MCHC) and mean corpuscular volume (MCV) [12, 17]. Thin blood smears were made and examined under a light microscope after been stained with Wright stain. Packed cell volume (PCV), concentration of plasma protein, differential white blood cell (WBC) count and the absolute values for each WBC type were determined according to the standard methods earlier [8,9,12,13].

Analysis of Plasma Biochemical Parameters

The anticoagulated blood samples taken earlier were centrifuged with the use of a bench centrifuge (Centrifuge

Table 1. Relative organ weights in % (mean ± SEM) of female ICR-mice treated with different doses of MOEL continuously for 90 days.

Organs (%)	1	2	3	4	5
Liver	6.49 ± 0.24	6.97 ± 0.36	5.85 ± 0.29	6.26 ± 0.72	5.92 ± 0.35
Right Kidney	0.88 ± 0.07	0.78 ± 0.04	0.75 ± 0.03	0.72 ± 0.04	0.72 ± 0.02
Left Kidney	0.81 ± 0.05	1.06 ± 0.30	0.72 ± 0.02	0.73 ± 0.06	0.66 ± 0.02
Spleen	0.63 ± 0.07	0.61 ± 0.06	0.70 ± 0.06	0.72 ± 0.07	0.46 ± 0.04*
Heart	0.68 ± 0.05	0.76 ± 0.03 ^a	0.80 ± 0.06	0.75 ± 0.05	0.63 ± 0.05
Lungs	1.41 ± 0.06	1.36 ± 0.08 ^a	1.28 ± 0.14	1.32 ± 0.13	1.57 ± 0.18
Brain	2.34 ± 0.09	1.88 ± 0.12*	1.58 ± 0.08*	1.78 ± 0.15 ^b	1.55 ± 0.10*
Uterus	1.22 ± 0.18	1.42 ± 0.20	1.31 ± 0.16	1.24 ± 0.15	1.22 ± 0.18

MOEL, *Moringa oleifera* ethanolic leaf extract; 1, control; 2, 125 mg/kg MOEL; 3, 250 mg/kg MOEL; 4, 500 mg/kg MOEL; 5, 1000 mg/kg MOEL; * in rows with asterisk are significantly ($p < 0.05$) different. Values in rows with different superscripts or with asterisk are significantly ($p < 0.05$) different.

S417R, Eppendorf, Murrieta, CA, USA) at 3000 rpm for 15 minutes to separate the plasma from whole blood. The separated plasma sample was then evaluated using an automated clinical chemistry analyser (BioLis 24i Chemistry Analyzer, Tokyo Boeki Japan Ltd, Tokyo, Japan) for the presence of creatinine, urea, aspartate aminotransferase (AST), alanine aminotransferase (ALT), creatinine kinase (CK), total protein (TP), globulins and albumin (ALB) [12,13,18].

Histopathological Evaluation of Liver and Kidneys

At the end of the experiments, liver and kidneys samples were obtained from individual mouse and prepared at the Histopathology Laboratory, Faculty of Veterinary Medicine, Universiti Putra Malaysia according to the standard methods [3,8,11–13,19]. The processed tissue samples were stained using haematoxylin and eosin (H&E) stains, then evaluated accordingly [3,11–13].

Lesion Scoring

Lesions on the liver and kidneys including pyknosis, karyolysis, karyorrhexis, acidophilic cytoplasm, sinusoidal dilatation, activated Kupffer cells, regeneration, degeneration (cytoplasmic vacuolation), inflammatory changes, cellular degenerative change (hydropic degeneration), formation of epithelial and hyaline casts were scored for the respective stained section as reported earlier [3,8,9,11,13,20]. The scoring methods and severity of each lesion in liver and kidney are shown on Table 1.

Statistical Analysis

The findings from the experiments were reported as mean ± standard error of the mean (SEM). It was then evaluated by one-way analysis of variance (ANOVA) statistical tool via *IBM *SPSS statistics 23 (IBM Corp., Armonk, NY, USA) [12]. Statistical differences among the experimental groups (between three or more groups) were established by tukey post hoc test [12]. Conversely, the findings from the histopathological observation from the

liver and kidneys were subjected to Kruskal Wallis H (non-parametric) test [12]. Significant was set at $p < 0.05$.

Results

Body Weight Gain

The effects of 90 days repeated administrations of various doses of MOEL on the mean body weight gain of the mice are demonstrated on Fig. 1. There were obvious ($p < 0.05$) changes in the body weight gain of the treated mice within the 13 weeks period of the study as shown by repeated measures ANOVA with a Greenhouse-Geisser correction and Bonferroni post hoc test (Fig. 1).

Analysis of Relative Organs Weight

The results of 90 days continuous oral administrations of varying dosages of MOEL on relative organs weights of female ICR-mice are described on Table 1. Significant ($p < 0.05$) difference was found among the groups using one-way ANOVA. Tukey post hoc test revealed that the mice administered with MOEL had 27% and 33.8% significant ($p < 0.05$) decreases respectively in the relative organ weight of spleen (0.46 ± 0.04) and brain (1.55 ± 0.10) in group 5 compared to 1 (0.63 ± 0.07 and 2.34 ± 0.09) (Table 1). Moreover, the relative organ weights of liver were 9.9% and 8.8% lower ($p > 0.05$) in groups 3 (5.85 ± 0.29) and 5 (5.92 ± 0.35) respectively, compared to 1 (6.49 ± 0.24). Likewise, the relative organ weights of right kidney were 11.4%, 14.8%, 18.2% and 18.2% lower ($p > 0.05$) in groups 2 (0.78 ± 0.04), 3 (0.75 ± 0.03), 4 (0.72 ± 0.04) and 5 (0.72 ± 0.02) respectively, compared to 1 (0.88 ± 0.07).

Evaluation of Haematological Parameters

Table 2 (Ref. [17]) presents the results of continuous oral gavage of varying doses of MOEL daily for 90 days on the blood parameters of female ICR-mice. Significant ($p > 0.05$) changes were not found among the groups, as shown by one-way ANOVA (Table 2). However, the

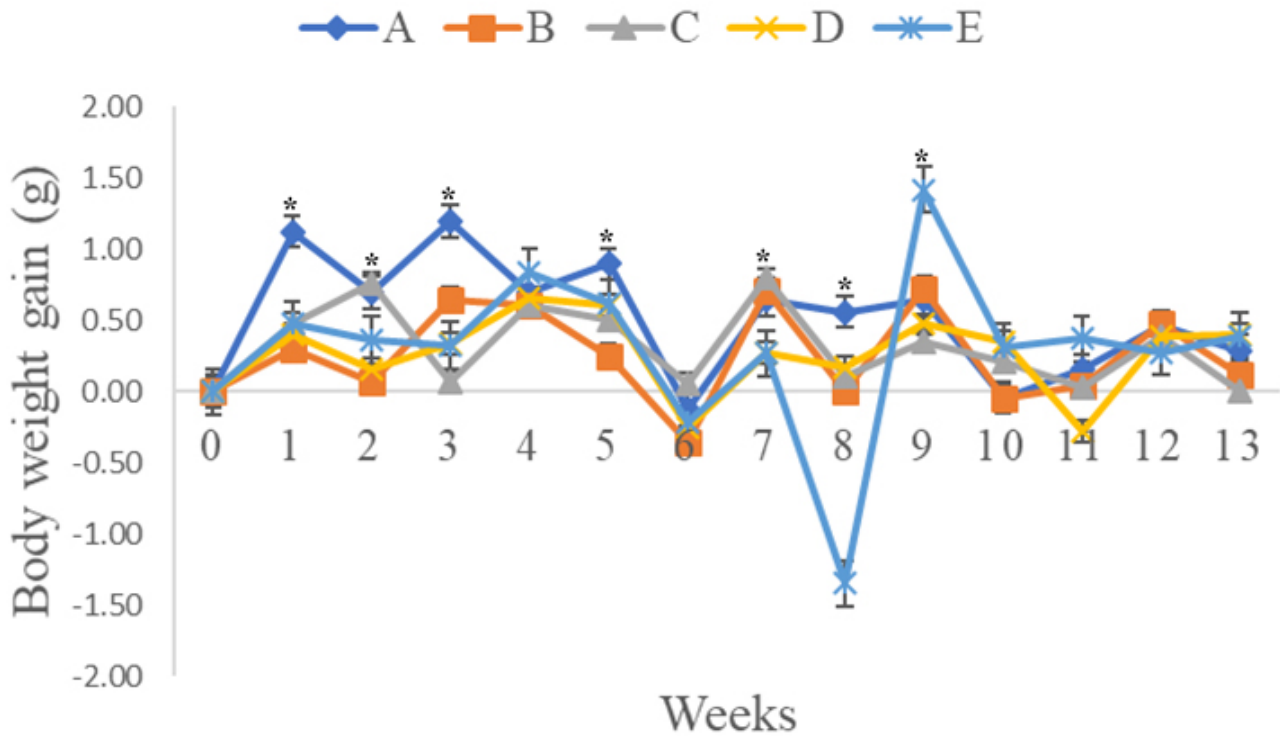


Fig. 1. Average weekly body weight gain (g) of female ICR-mice treated with different doses of MOEL continuously for 90 days. A, control; B, 125 mg/kg MOEL; C, 250 mg/kg MOEL; D, 500 mg/kg MOEL; E, 1000 mg/kg MOEL; *significantly different at $p < 0.05$; SEM, standard error of mean; MOEL, *Moringa oleifera* ethanolic leaf extract; ICR, Institute of Cancer Research.

haemoglobin concentrations were 4.6% greater ($p < 0.05$) in group 5 (165.67 ± 4.22 g/L) compared to 1 (158.40 ± 3.27 g/L). Moreover, there were 10.6%, 36.7% and 16.8% elevation ($p > 0.05$) in the number of platelets in groups 3 ($963.60 \pm 154 \times 10^9/L$), 4 ($1191.90 \pm 149 \times 10^9/L$) and 5 ($1018.00 \pm 145 \times 10^9/L$) respectively, compared to 1 ($871.60 \pm 124 \times 10^9/L$). Correspondingly, the plasma proteins were 4.4%, 7.3% and 10% higher ($p > 0.05$) in groups 3 (81.00 ± 1.94 g/L), 4 (83.30 ± 2.87) and 5 (85.33 ± 2.51 g/L) respectively, compared to 1 (77.60 ± 3.34 g/L). Interestingly, the values for red blood cells, haemoglobin, and platelets in all the groups were within the reference limits (Table 2). Furthermore, the values for total white blood cell count (TWBC) were 26.7% higher ($p > 0.05$) in group 4 ($9.29 \pm 0.77 \times 10^{12}/L$) compared to 1 ($7.33 \pm 0.45 \times 10^{12}/L$). The lymphocytes in group 4 ($5.89 \pm 0.45 \times 10^9/L$) were 28.3% higher ($p > 0.05$) than group 1 ($4.59 \pm 0.31 \times 10^9/L$). Similarly, the monocytes were 8.5% higher ($p > 0.05$) in group 4 ($0.51 \pm 0.05 \times 10^9/L$) compared to 1 ($0.47 \pm 0.03 \times 10^9/L$).

Evaluation of Plasma Biochemical Parameters

The changes on the biochemical parameters of female ICR-mice administered with varying doses of MOEL repeatedly daily for 90 days are described on Table 3 (Ref. [17]). Significant ($p < 0.05$) changes in the plasma biochemical markers of the mice were observed among the

treatment groups, as shown by one-way ANOVA (Table 3). Tukey post hoc test indicated that there were 35.4% and 34.6% significant ($p < 0.05$) elevation in the blood concentration of urea in groups 2 (9.52 ± 0.79 mmol/L) and 4 (9.46 ± 0.80 mmol/L) respectively, compared to 1 (7.03 ± 0.25 mmol/L). Moreover, an 83% significant ($p < 0.05$) elevation in the plasma concentration of ALT was noticed in group 5 (437.50 ± 28.63 U/L) compared to 1 (239.10 ± 22.50 U/L), in addition to a 71.2% significant ($p < 0.05$) elevation in AST level in group 5 (355.90 ± 26.45 U/L) compared to 1 (207.90 ± 19.67 U/L). The plasma concentration of CK were also 51.2% and 54.2% significantly ($p < 0.05$) elevated in groups 4 (962.60 ± 78.88 U/L) and 5 (981.90 ± 132.37 U/L) respectively, compared to 1 (636.80 ± 45.81 U/L). Furthermore, the levels of plasma total proteins were 8.56%, 5.67% and 6.63% higher ($p > 0.05$) in groups 3 (62.51 ± 3.95 g/L), 4 (60.84 ± 3.87 g/L) and 5 (61.40 ± 2.01 g/L) correspondingly, compared to group 1 (57.58 ± 4.20 g/L).

Histological Evaluation of Lesions in the Liver

The results of the histopathological analysis of liver of female ICR-mice following administration of different dosages of MOEL repeatedly for 90 days are presented on Table 4. Significant ($p < 0.05$) changes in the lesion score were observed among the groups treated with the extract, as shown by Kruskal Wallis H test (Table 4). Pair-

Table 2. Haematological parameters (mean ± SEM) of female ICR-mice treated with different doses of MOEL continuously for 90 days.

Parameters	1	2	3	4	5	Reference ^a
Red blood cells (×10 ¹² /L)	9.50 ± 0.25	9.49 ± 0.71	9.84 ± 0.32	9.31 ± 0.32	9.96 ± 0.24	9.12–10.74
Haemoglobin (g/L)	158.40 ± 3.27	153.70 ± 11.24	157.50 ± 4.21	155.80 ± 4.50	165.67 ± 4.22	145–179
PCV (L/L)	0.33 ± 0.02	0.34 ± 0.03	0.34 ± 0.02	0.35 ± 0.02	0.34 ± 0.02	0.433–0.485
Platelets (×10 ⁹ /L)	871.60 ± 124	825.60 ± 102	963.60 ± 154	1191.90 ± 149	1018.00 ± 145	926–1539
MCV (fl)	65.80 ± 0.79	66.70 ± 0.84	65.20 ± 1.10	66.00 ± 1.07	65.67 ± 0.97	41.8–47.9
MCH (pg)	16.71 ± 0.33	16.23 ± 0.36	16.11 ± 0.38	16.79 ± 0.36	16.67 ± 0.40	15.1–17.8
MCHC (g/L)	253.50 ± 3.51	243.70 ± 3.78	250.20 ± 5.20	254.60 ± 3.88	253.56 ± 3.05	351–385
Plasma proteins (g/L)	77.60 ± 3.34	79.20 ± 0.61	81.00 ± 1.94	83.30 ± 2.87	85.33 ± 2.51	-
White blood cells (×10 ⁹ /L)	7.33 ± 0.45	7.01 ± 0.49	7.03 ± 0.76	9.29 ± 0.77	7.59 ± 0.79	7.8–16.85
Neutrophils (×10 ⁹ /L)	2.02 ± 0.16	1.83 ± 0.17	1.79 ± 0.30	2.61 ± 0.31	2.40 ± 0.32	0.82–2.36
Lymphocytes (×10 ⁹ /L)	4.59 ± 0.31	4.62 ± 0.31	4.72 ± 0.44	5.89 ± 0.45	4.53 ± 0.50	5.5–14.32
Monocytes (×10 ⁹ /L)	0.47 ± 0.03	0.42 ± 0.03	0.38 ± 0.04	0.51 ± 0.05	0.47 ± 0.06	0.09–0.27
Eosinophils (×10 ⁹ /L)	0.24 ± 0.04	0.14 ± 0.03	0.14 ± 0.04	0.28 ± 0.05	0.19 ± 0.06	0–0.79
Basophils (×10 ⁹ /L)	0.00 ± 0.00	0.00 ± 0.00	0.00 ± 0.00	0.00 ± 0.00	0.00 ± 0.00	0–0.08

MOEL, *Moringa oleifera* ethanolic leaf extract; 1, control; 2, 125 mg/kg MOEL; 3, 250 mg/kg MOEL; 4, 500 mg/kg MOEL; 5, 1000 mg/kg MOEL; MCV, mean corpuscular volume; MCH, mean corpuscular haemoglobin; MCHC, mean corpuscular haemoglobin concentration; a, Serfilippi *et al.* [17]. MOEL readings in rows with no asterisk did not differ significantly ($p > 0.05$).

Table 3. Biochemical parameters (mean ± SEM) of female ICR- treated with varying doses of MOEL continuously for 90 days.

Parameters	1	2	3	4	5	Reference ^a
Urea (mmol/L)	7.03 ± 0.25*	9.52 ± 0.79	8.30 ± 0.58	9.46 ± 0.80	9.24 ± 0.29	4.6–7.5
Creatinine (µmol/L)	30.50 ± 1.31	27.90 ± 1.73	35.10 ± 3.14*	25.30 ± 0.86	29.50 ± 1.67	26.52–35.36
ALT (U/L)	239.10 ± 22.50	258.90 ± 19.80	269.20 ± 25.90	274.00 ± 24.03	437.50 ± 28.63*	19–42
AST (U/L)	207.90 ± 19.67	227.30 ± 19.53	264.60 ± 31.59	178.10 ± 17.68	355.90 ± 26.45*	46–79
CK (U/L)	636.80 ± 45.81	603.30 ± 53.82	806.50 ± 77.94	962.60 ± 78.88*	981.90 ± 132.37*	35–246
Total Protein (g/L)	57.58 ± 4.20	58.12 ± 2.07	62.51 ± 3.95	60.84 ± 3.87	61.40 ± 2.01	53–60
Albumin (g/L)	32.05 ± 2.01	33.91 ± 1.26	34.62 ± 1.80	35.89 ± 3.78	35.53 ± 1.57	36–43
Globulins (g/L)	25.53 ± 2.66	24.21 ± 2.00	27.89 ± 2.46	24.95 ± 2.71	25.87 ± 2.54	15–21

MOEL, *Moringa oleifera* ethanolic leaf extract; 1, control; 2, 125 mg/kg MOEL; 3, 250 mg/kg MOEL; 4, 500 mg/kg MOEL; 5, 1000 mg/kg MOEL; CK, creatinine kinase; a, Serfilippi *et al.* [17]; * indicates statistical significance at $p < 0.05$.

wise comparisons test demonstrated a moderate hepatic degeneration (Table 4) characterised by moderate cytoplasmic vacuolation (Fig. 2B,D) in group 5 (1.70 ± 0.24) compared to 1 (0.35 ± 0.18; Fig. 2A). Moreover, there were mild (1.40 ± 0.19) activated Kupffer cells (Fig. 2B,D), as well as mild necrosis of the hepatocytes indicated by mild eosinophilic cytoplasm (1.10 ± 0.3) of the hepatocytes in group 5 (Fig. 2B,C) compared to 1 (0.00 ± 0.00) (Table 4).

Histological Evaluation of Lesions in the Kidney

The findings from the histopathological evaluation of kidneys of female ICR-mice administered with different dosages of MOEL repeatedly for 90 days are presented on Table 5. Significant ($p < 0.05$) changes in the lesion score were observed among the groups treated with the extract, as shown by Kruskal Wallis H test. Pairwise comparisons test demonstrated a moderate cytoplasmic vacuolation in the kidneys (Fig. 3C,F) in group 5 (2.20 ± 0.08) compared to 1 (0.00 ± 0.00; Fig. 3A,B). In addition, a moderate to severe kidney necrosis indicated by significant ($p < 0.05$)

eosinophilia of the cytoplasm (Fig. 3C–F) in groups 4 (1.95 ± 0.09) and 5 (2.45 ± 0.05) compared 1 (0.00 ± 0.00; Fig. 3A,B). Furthermore, pyknosis (0.90 ± 0.27) and karyolysis (0.60 ± 0.26) were significantly ($p < 0.05$) elevated (Fig. 3C,D) in groups 4 (1.15 ± 0.34) and 5 (1.75 ± 0.24) compared to 1 (0.00 ± 0.00). The protein casts (Fig. 3E) were significantly ($p < 0.05$) elevated in group 5 (1.20 ± 0.20) compared to 1 (0.00 ± 0.00) (Table 5).

Discussion

The evaluation of toxic potentials of plants is necessary for use in both human and animal. Toxicological investigations are generally carried out in animals to determine how a substance or chemical can affect the body of the animals, so as to forecast the potential consequences and/or dosages of the substance in humans [21]. Liver and kidney are the major organs for to be evaluated in evaluating oral toxicity. This is important due to the fact that compounds taken via the oral route are first being processed by the liver

Table 4. Lesion scores (mean \pm SEM) of the liver of female ICR-mice treated with different doses of MOEL continuously for 90 days.

Lesion	1	2	3	4	5
Hydropic degeneration	0.35 \pm 0.18	1.45 \pm 0.26	0.35 \pm 0.24	1.90 \pm 0.12*	1.70 \pm 0.24*
Eosinophilic cytoplasm	0.00 \pm 0.00	0.20 \pm 0.20	0.45 \pm 0.24	0.00 \pm 0.00	1.10 \pm 0.3*
Pyknosis	0.00 \pm 0.00	0.20 \pm 0.20	0.00 \pm 0.00	0.00 \pm 0.00	0.15 \pm 0.15
Karyolysis	0.00 \pm 0.00	0.00 \pm 0.00	0.00 \pm 0.00	0.00 \pm 0.00	0.20 \pm 0.20
Sinusoidal dilatation	0.00 \pm 0.00	0.20 \pm 0.20	0.00 \pm 0.00	0.10 \pm 0.10	0.60 \pm 0.28*
Activated Kupffer cells	0.00 \pm 0.00	0.00 \pm 0.00	0.00 \pm 0.00	0.35 \pm 0.18	1.40 \pm 0.19*
Inflammation	0.10 \pm 0.10	0.45 \pm 0.23	0.00 \pm 0.00	0.00 \pm 0.00	0.40 \pm 0.16*
Regeneration	0.55 \pm 0.24	0.40 \pm 0.27	1.50 \pm 0.33	1.05 \pm 0.25	0.80 \pm 0.23

MOEL, *Moringa oleifera* ethanolic leaf extract; 1, control; 2, 125 mg/kg MOEL; 3, 250 mg/kg MOEL; 4, 500 mg/kg MOEL; 5, 1000 mg/kg MOEL; * indicates statistical significance at $p < 0.05$.

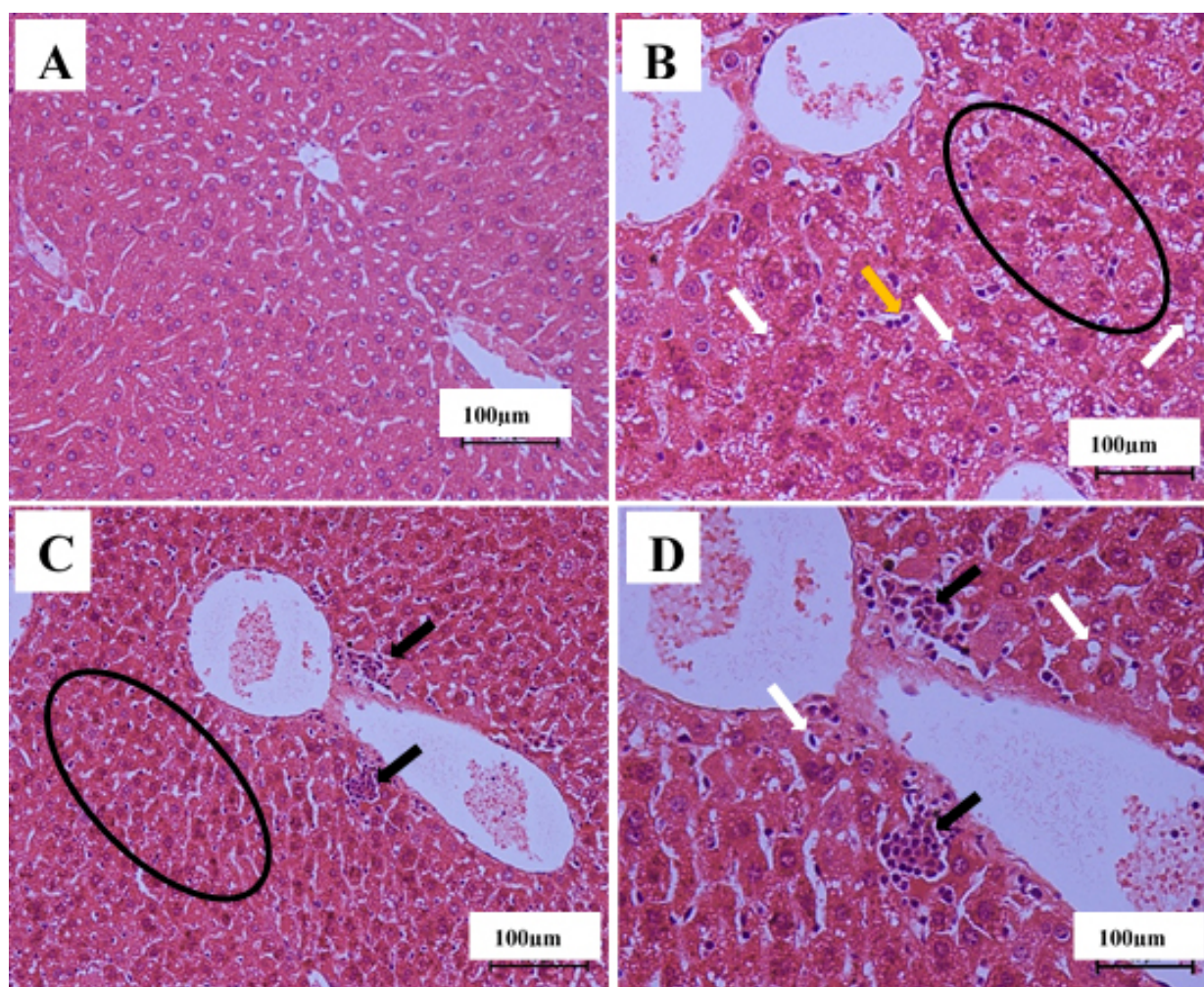


Fig. 2. Effects of continuous oral administration of MOEL for 90 days on histology of liver of female ICR-mice. (A) Micrograph of a liver histology (H&E stain $\times 200$ stain) in a mouse in group 1 (control) presenting typical structure of liver, (B) Micrograph of a liver histology (H&E stain $\times 200$) in a mouse in group 5 (1000 mg/kg MOEL) presenting eosinophilic cytoplasm (encircled), activated Kupffer cells (yellow arrow), (C) Micrograph of a liver histology (H&E stain $\times 100$) in a mouse in group 5 presenting cellular infiltrates (black arrows) and eosinophilic cytoplasm (encircled), (D) Higher magnification of E (H&E stain $\times 200$). H&E, haematoxylin and eosin.

and later excreted from the body via the kidneys [22]. Acute toxicity study may perhaps offer important information for the detection of the targeted organs by the substances af-

ter acute administration [22]. On the other hand, the sub-acute and sub-chronic toxicity studies evaluate the toxic effects of recurrent gavage of a substance or chemical on spe-

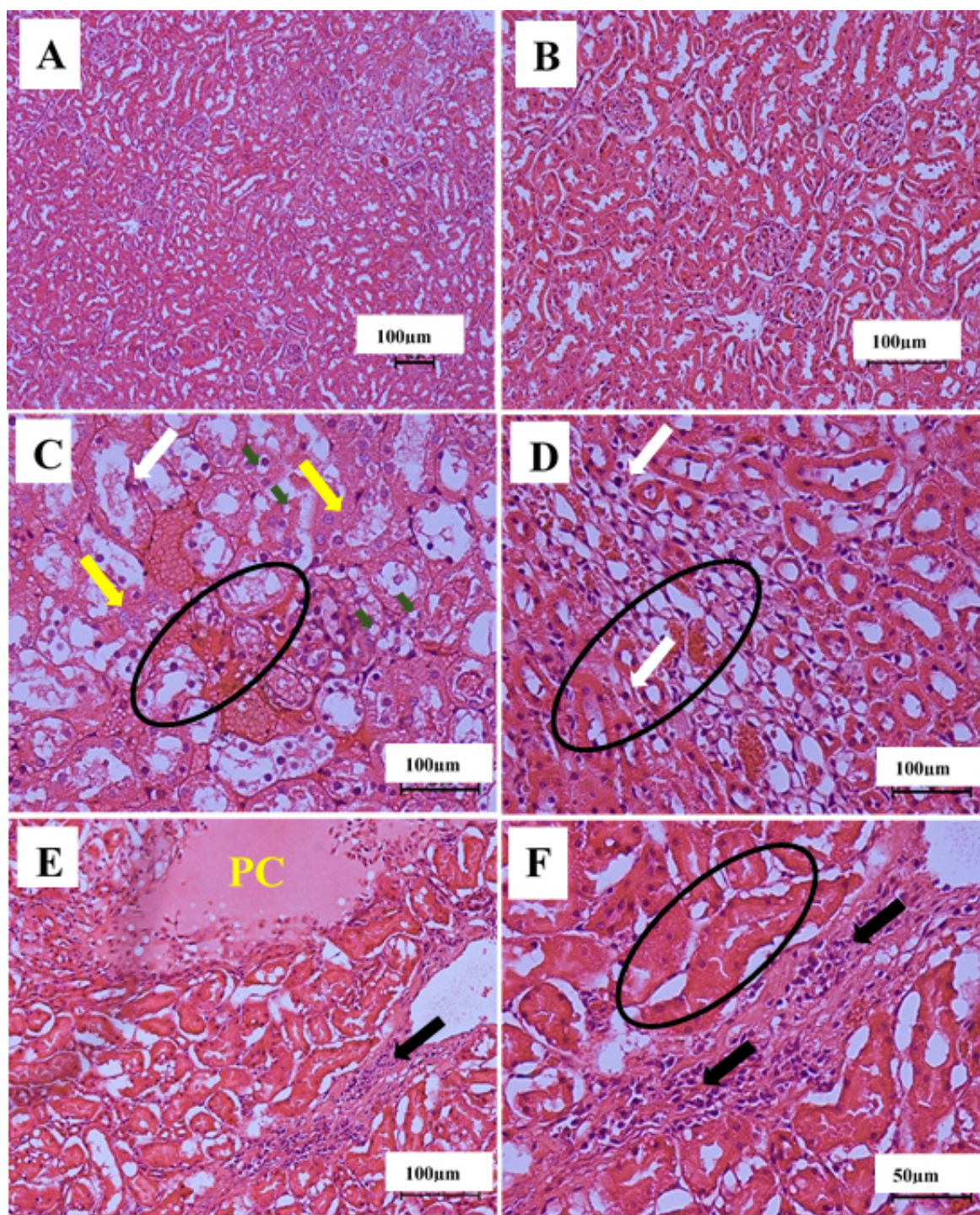


Fig. 3. Effects of continuous oral administration of MOEL for 90 days on the histology of kidney of female ICR-mice. (A) Micrograph of a kidney histology (H&E stain $\times 100$) in a mouse in group 1 presenting typical renal structure, (B) Higher magnification of A (H&E $\times 200$), (C) Micrograph of a kidney histology (H&E stain $\times 400$) in a mouse in group 4 (500 mg/kg MOEL) presenting vacuolations (green arrows), eosinophilic cytoplasm (black encircled), pyknosis of the renal tubular cells (white arrow), as well as karyolysis of the renal tubular cells (yellow arrows), (D) Micrograph of a kidney histology (H&E stain $\times 400$) in a mouse in group 5 (1000 mg/kg MOEL), presenting eosinophilic cytoplasm (black encircled) and pyknosis of the renal tubular cells (white arrows), (E) Micrograph of a kidney histology (H&E stain $\times 200$) in a mouse in group 5 (1000 mg/kg MOEL), presenting protein cast (PC) and cellular infiltrations (black arrows), (F) Higher magnification of E presenting eosinophilic cytoplasm of the renal tubules (black encircled) and cellular infiltrations (black arrows) (H&E stain $\times 400$).

Table 5. Lesion scores (mean \pm SEM) of the kidney of female ICR-mice in sub-chronic toxicity study of MOEL.

Lesion	1	2	3	4	5
Hydropic degeneration	0.00 \pm 0.00	0.20 \pm 0.20	0.00 \pm 0.00	0.65 \pm 0.33	2.20 \pm 0.08*
Eosinophilic cytoplasm	0.10 \pm 0.10	0.00 \pm 0.00	0.90 \pm 0.21	1.95 \pm 0.09*	2.45 \pm 0.05*
Pyknosis	0.00 \pm 0.00	0.00 \pm 0.00	0.00 \pm 0.00	1.15 \pm 0.34*	1.75 \pm 0.24*
Karyolysis	0.00 \pm 0.00	0.00 \pm 0.00	0.00 \pm 0.00	0.80 \pm 0.34	1.65 \pm 0.20*
Nephritis	0.30 \pm 0.15	0.25 \pm 0.17	0.50 \pm 0.21	0.20 \pm 0.20	0.85 \pm 0.30
Protein casts	0.65 \pm 0.18	0.10 \pm 0.10	0.50 \pm 0.17	0.45 \pm 0.23	0.70 \pm 0.25
Cellular casts	0.00 \pm 0.00	0.10 \pm 0.10	0.00 \pm 0.00	0.00 \pm 0.00	0.00 \pm 0.00
Granular casts	0.00 \pm 0.00	0.00 \pm 0.00	0.00 \pm 0.00	0.75 \pm 0.21	1.20 \pm 0.20*

MOEL, *Moringa oleifera* ethanolic leaf extract; 1, control; 2, 125 mg/kg MOEL; 3, 250 mg/kg MOEL; 4, 500 mg/kg MOEL; 5, 1000 mg/kg MOEL; * indicates statistical significance different at $p < 0.05$.

cific markers of the animals under investigation. This is to produce proofs on the target-organ toxicity and possibilities of bioaccumulation of the test substance, that are necessary to determine the no-observed-adverse-effect levels (NOAELs), so that, the doses for human exposure can be established [10].

The continuous oral administration of MOEL daily for 90 days showed certain changes in the physiological and histological structures of the mice. The results demonstrated an obvious decline in body weight gain throughout the investigation period. This corroborate the results reported by Aliyu *et al.* [3], which observed a remarkable reduction in the body weight gain in mice gavaged with *Moringa oleifera* continuously for four weeks. This can indicate further that the repeated oral administration of the extract might have influenced the appetite of the mice or might have influenced the normal fat metabolism of the mice tested [11,23]. Moreover, the relative internal organ weights give information on the possibility of the test substance to affect certain organs of the body [3]. These results contradict the results of other previous investigators including Chivapat *et al.* [24] and Kwaghe *et al.* [25], perhaps of the variations in the solvents for extraction and the species of animals used [2]. The researchers found that daily administration of *M. oleifera* aqueous extract in Wistar rats at different doses, including 10, 100 and 1000 mg/kg daily for six months did not present any significant alterations in the average body weight of the rats during the study period [24]. Correspondingly, oral gavage of ethyl acetate soluble fraction of aqueous extract of *M. oleifera* leaves in cockerels at different doses, including 100, 200, 300 and 400 mg/kg daily for 28 days did not indicate any remarkable changes in body weight of the treated mice in comparison with the control mice [25]. The variations in the findings of this research with of the ones highlighted by Chivapat *et al.* [24] and Kwaghe *et al.* [25] might be because of the variation in the animal species and extraction solvents used in the respective studies [2].

The remarkable elevation in the plasma concentrations of ALT and AST in the mice administered with 1000 mg/kg dose of MOEL daily for 90 days suggests the extract at this

high dose has remarkable adverse effect on the liver [26,27] of the experimental mice, as reported elsewhere [3] following daily oral gavage of *M. oleifera* extract at 1000 mg/kg for 28 days. Hepatic necrosis has been associated with increased permeability of cell membrane, leading to leakage of cytosolic ALT and subsequent elevation of the enzyme in the blood [28]. Furthermore, ALT has been established to be elevated in hepatic injuries particularly liver necrosis, in different animals including mice [3,26]. The elevation of ALT and AST in this study supports the previous findings by Adedapo *et al.* [29], who reported a significant elevation in serum concentration of ALT and AST in rats administered with 400 and 1600 mg/kg *M. oleifera* leaves extracts for three weeks [29]. Moreover, a significant reduction in liver enzyme serum glutamic oxalo-acetic transaminase (SGOT), also known as AST has been demonstrated by Awodele *et al.* [15] in rats administered with *M. oleifera* extract at 250, 500 and 1500 orally, indicating liver injury in the treated animals. In another study by Olayemi *et al.* [30] the activities of liver enzymes; AST, ALP and ALT were found to be significantly lower following daily administration of 100, 200, 400 and 1000 mg/kg of the seed and leaf methanolic extracts of *M. oleifera* in rats for 28 days. The significant elevation in the plasma levels of CK (creatinine kinase) enzyme at 500 and 1000 mg/kg doses could be as a result of muscle injury in the treated mice and/or an increase in the activity of the mice [26,27]. This is true because increased serum activities of AST, and CK, have been shown to be associated with myocardial infarction, injury in muscle or increased muscle activity [31]. The obvious rise in plasma concentration of urea throughout the treatment groups might be associated with dehydration as indicated by the decrease bodyweight of the animals. Dehydration has been reported to decrease the glomerular filtration rate, thereby decreasing the tubular reabsorption of urea by renal tubules and subsequent reduction in the concentration of urea in the blood [26]. However, the elevation in the plasma levels of creatinine in the group of mice administered with 250 mg/kg of the extract may indicate kidney pathology in the mice because creatinine has been considered as an important marker for kidney function [32,33].

Evaluation of the histology of liver in this research showed that the extract only induced a very mild histological lesions at the highest (1000 mg/kg) dose of the extract. The mild eosinophilic cytoplasm and cytoplasmic vacuolation and of the hepatocytes may indicate that the affected mice might have been recovering from the effects of early administration of the extract and the activated Kupffer cells signified that phagocytic process is ongoing probably to remove out some of the earlier affected hepatocytes [8,9,34]. This may further explain the significant changes observed in the plasma hepatic injury markers earlier in the research. Conversely, the result of the renal histological evaluation of the mice revealed moderate to severe renal lesions. The moderate cytoplasmic vacuolation noted in the group administered with 1000 mg/kg of the extracts suggested that the extract elicited tubular degenerative changes [25,35] in the kidney of the mice, likewise the moderate and moderate to severe eosinophilic cytoplasm respectively noted in the mice administered with 500 and 1000 mg/kg suggested that the extract at these dosages could have induced renal necrosis in the treated mice [9,30,35].

Conclusions

It is concluded that, 90 days daily continuous oral administrations of MOEL for in female ICR mice at 500 mg/kg and 1000 mg/kg caused moderate hepatic degeneration and necrosis respectively, as well as mild renal necrosis at 1000 mg/kg. Hence, the plant extract at 1000 mg/kg dose, is deemed toxic and unsafe for long term continuous intake as food additive and/or as complementary medicine; but, smaller doses can be used safely for medical reasons. However, the current research did not include molecular mechanisms and signaling pathways for organ toxicity. The authors encourage future researchers to consider this aspect in designing a similar study.

Availability of Data and Materials

All experimental data included in this study can be obtained by contacting the corresponding authors if needed.

Author Contributions

AA, MRS, NSAS, MFHR, SS, SNNA, MMN, KS, and HH made the design of the experimental protocol. QAR and AAA performed the experiments. AA, AAA and QAR drafted this manuscript. All authors contributed to important editorial changes in the manuscript. All authors read and approved the final manuscript. All authors have participated sufficiently in the work and agreed to be accountable for all aspects of the work.

Ethics Approval and Consent to Participate

The present study followed institutional guides for humane animal treatment and complied with the relevant legislation, according to the guide for the care and use of laboratory animals of Malaysian Agricultural Research Development Institute (MARDI). The study was approved by the Animal Ethic Committee (approval reference number: 20170717/R/MAEC00023).

Acknowledgment

The technical support from the staff of the Natural Product Laboratory, Institute of Bioscience, UPM (Mr Azizul Isa, Mrs. Zurina Zainal, Mr. Ahmad Fauzi Mokhtar), Histopathology Laboratory, Faculty of Veterinary Medicine, UPM (Mr. Mohd Jamil Samad, Mrs. Jamila Jahari, Mrs. Latifah Mohd Hanan, Ms. Zainatulaishah Abdul Manaf) and Haematology and Clinical Biochemistry Laboratory, Faculty of Veterinary Medicine, UPM (Mrs. Darulmuqamah Masud, Mrs. Noorain Azman, Mr. Abdullah Misron, and Mr. Arman Addelan) are highly acknowledged. The authors also wish to acknowledge the contributions of the Malaysian Agricultural Research Development Institute (MARDI) and that of the Research, Innovation and Technology Transfer Center, A'Sharqiyah University, Oman.

Funding

This research was funded by the IPS Research Grant (IPS/2018/9594600) Universiti Putra Malaysia, and the Tertiary education trust fund, Nigeria (TET-FUND/ES/AST&D/UDU/SOKOTO/VOL.1/05/25/2016).

Conflict of Interest

The authors declare no conflict of interest.

References

- [1] Zaku SG, Emmanuel S, Tukur AA, Kabir A. *Moringa oleifera*: An underutilized tree in Nigeria with amazing versatility: A review. *African Journal of Food Science*. 2015; 9: 456–461.
- [2] Mahdi H, Yousif E, Khan N, Mahmud R, Murugaiyah V, Asmawi M. Optimizing Extraction Conditions of *Moringa Oleifera* Lam Leaf for Percent Yield, Total Phenolics Content, Total Flavonoids Content and Total Radical Scavenging Activity. *International Journal of Advanced Research*. 2016; 4: 682–695.
- [3] Aliyu A, Shaari MR, Ahmad Sayuti NS, Reduan FH, Sithambaram S, Mohamed Mustapha N, *et al.* *Moringa oleifera* hydroethanolic leaf extract induced acute and sub-acute hepatonephrotoxicity in female ICR-mice. *Science Progress*. 2021; 104: 368504211004272.
- [4] Iqbal S, Bhangar MI. Effect of season and production location on antioxidant activity of *Moringa oleifera* leaves grown in Pakistan. *Journal of food Composition and Analysis*. 2006; 19: 544–551.
- [5] Abdul-Hamid NA, Abas F, Ismail IS, Shaari K, Lajis NH. In-

- fluence of Different Drying Treatments and Extraction Solvents on the Metabolite Profile and Nitric Oxide Inhibitory Activity of Ajwa Dates. *Journal of Food Science*. 2015; 80: H2603–H2611.
- [6] Annegowda HV, Bhat R, Min-Tze L, Karim AA, Mansor SM. Influence of sonication treatments and extraction solvents on the phenolics and antioxidants in star fruits. *Journal of Food Science and Technology*. 2012; 49: 510–514.
- [7] Khoo LW, Foong Kow AS, Maulidiani M, Lee MT, Tan CP, Shaari K, *et al.* Hematological, Biochemical, Histopathological and ¹H-NMR Metabolomics Application in Acute Toxicity Evaluation of *Clinacanthus nutans* Water Leaf Extract. *Molecules* (Basel, Switzerland). 2018; 23: 2172.
- [8] Nurul SAS, Hazilawati H, Mohd RS, Mohd FHR, Noordin MM, Norhaizan ME. Subacute Oral Toxicity Assessment of Ethanol Extract of *Mariposa christia vespertilionis* Leaves in Male Sprague Dawley Rats. *Toxicological Research*. 2018; 34: 85–95.
- [9] Sajjarattul NNA, Hazilawati H, Rosly SM, Shanmugavelu S, Noordin MM. Blood Profiles and Histopathological Changes of Liver and Kidney Tissues from Male Sprague Dawley Rats Treated with Ethanol Extracts of *Clinacanthus nutans* Leaf. *Journal of Clinical Toxicology*. 2016; 06: 1–10.
- [10] Zakaria ZA, Hafiz M, Rahim A, Mohtarrudin N, Kadir A, Cheema MS, *et al.* Acute and sub-chronic oral toxicity studies of methanolic extract of *Clinacanthus nutans* in mice. *African Journal of Traditional, Complementary and Alternative Medicines*. 2016; 13: 210–222.
- [11] Aliyu A, Shaari MR, Ahmad Sayuti NS, Reduan MFH, Nadia Asyura SN, Sithambaram S, *et al.* Toxicity Effects of Oral Administration of *Clinacanthus nutans* Ethanolic Leaf Extract on Blood, Liver and Kidneys of Mice. *Indian Journal of Pharmaceutical Sciences*. 2021; 83: 1196–1207.
- [12] Aliyu A, Shaari MR, Ahmad Sayuti NS, Reduan MFH, Sithambaram S, Noordin MM, *et al.* *N*-Ethyl-*n*-Nitrosourea Induced Leukaemia in a Mouse Model through Upregulation of Vascular Endothelial Growth Factor and Evading Apoptosis. *Cancers*. 2020; 12: 678.
- [13] Aliyu A, Shaari MR, Ahmad Sayuti NS, Reduan MFH, Sithambaram S, Noordin MM, *et al.* Subacute Oral Administration of *Clinacanthus nutans* Ethanolic Leaf Extract Induced Liver and Kidney Toxicities in ICR Mice. *Molecules* (Basel, Switzerland). 2020; 25: 2631.
- [14] Mohd FHR, Mohd RS, Sayuti NSA, Aliyu A, Mustapha NM, Bakar MZA, *et al.* Evaluation of dermal toxicity study of ethanolic extract of *Morinda citrifolia* fruit in Sprague Dawley rats. *The Thai Journal of Veterinary Medicine*. 2021; 51: 101–109.
- [15] Awodele O, Oreagba IA, Odoma S, da Silva JAT, Osunkalu VO. Toxicological evaluation of the aqueous leaf extract of *Moringa oleifera* Lam. (Moringaceae). *Journal of Ethnopharmacology*. 2012; 139: 330–336.
- [16] Wiedmeyer CE, Ruben D, Franklin C. Complete blood count, clinical chemistry, and serology profile by using a single tube of whole blood from mice. *Journal of the American Association for Laboratory Animal Science: JAALAS*. 2007; 46: 59–64.
- [17] Serfilippi LM, Pallman DRS, Russell B. Serum clinical chemistry and hematology reference values in outbred stocks of albino mice from three commonly used vendors and two inbred strains of albino mice. *Contemporary Topics in Laboratory Animal Science*. 2003; 42: 46–52.
- [18] Fernandes DP, Pimentel MML, Santos FAD, Praxedes ÉA, Brito PDD, Lima MA, *et al.* Hematological and biochemical profile of BALB/c nude and C57BL/6 SCID female mice after ovarian xenograft. *Anais Da Academia Brasileira De Ciencias*. 2018; 90: 3941–3948.
- [19] Nurul SAS, Hazilawati H, Rosly SM, Hanif FMR, Abdullahi A, Shanmugavelu S, *et al.* Hepatotoxicity in acute and subchronic oral gavage of ethanolic extract of *Christia vespertilionis* (L.f.) Bakh. f. leaf in male sprague dawley rats. *The Thai Journal of Veterinary Medicine*. 2022; 52: 229–244.
- [20] Zhao PY, Yao RQ, Zheng LY, Wu Y, Li YX, Dong N, *et al.* Nuclear fragile X mental retardation-interacting protein 1-mediated ribophagy protects T lymphocytes against apoptosis in sepsis. *Burns & Trauma*. 2023; 11: tkac055.
- [21] Barle EL, Looser R, Cerne M, Bechter R. The value of acute toxicity testing of pharmaceuticals for estimation of human response. *Regulatory Toxicology and Pharmacology: RTP*. 2012; 62: 412–418.
- [22] Timbrell JA. *Principles of Biochemical Toxicology*. CRC Press: New York. 2008.
- [23] Priestman DA, van der Spoel AC, Butters TD, Dwek RA, Platt FM. *N*-butyldeoxynojirimycin causes weight loss as a result of appetite suppression in lean and obese mice. *Diabetes, Obesity & Metabolism*. 2008; 10: 159–166.
- [24] Chivapat S, Sincharoenpokai P, Saktiyasuthorn N, Shuaprom A, Thongsrirak P, And AS, *et al.* Acute and chronic toxicity of *Moringa oleifera* Linn leaves extracts. *The Thai Journal of Veterinary Medicine*. 2011; 41: 417–424.
- [25] Kwaghe AV, Hassan SU, Ambali AG. Subacute Toxicity Studies of *Moringa oleifera* Leaf. *New York Science Journal*. 2012; 5: 71–84.
- [26] Brush BM. Interpretation of Laboratory Results for Small Animal Clinicians. *Journal of Small Animal Practice*. 1991; 33: 25–34.
- [27] Tennant BC, Center SA. 2008. Hepatic function (pp.379–412). In Kaneko JJ, Harvey JW, Bruss ML (eds), *Clinical biochemistry of domestic animals*, ed 6. Academic Press, San Diego, CA. 2008.
- [28] Loeb WF. *Clinical Biochemistry of Laboratory Rodents and Rabbits*. *Clinical Biochemistry of Domestic Animals* (pp.845–855). Academic Press: place. 1997. Loeb WF. *Clinical Biochemistry of Laboratory Rodents and Rabbits*. *Clinical Biochemistry of Domestic Animals* (pp.845–855). Academic Press: School of Veterinary Medicine, University of California, Davis, USA. 1997.
- [29] Adedapo AA, Mogbojuri OM, Emikpe BO. Safety evaluations of the aqueous extract of the leaves of *moringa oleifera* in rats. *Journal of Medicinal Plants Research*. 2009; 3: 586–591.
- [30] Olayemi AT, Olanrewaju MJ, Oloruntoba AC. Toxicological evaluation of *Moringa oleifera* Lam seeds and leaves in Wistar rats. *Pharmacognosy Communications*. 2016; 6: 100–111.
- [31] Schwane JA, Johnson SR, Vandenaeker CB, Armstrong RB. Delayed-onset muscular soreness and plasma CPK and LDH activities after downhill running. *Medicine and Science in Sports and Exercise*. 1983; 15: 51–56.
- [32] Gad MME, Mohammad YS, Mohammad TGM. Acute and Repeated-Doses (28 Days) Toxicity of Thymol Formulation in Male Albino Rats. *Australian Journal of Basic and Applied Sciences*. 2013; 7: 915–922.
- [33] Keppler A, Gretz N, Schmidt R, Kloetzer HM, Groene HJ, Lelongt B, *et al.* Plasma creatinine determination in mice and rats: an enzymatic method compares favorably with a high-performance liquid chromatography assay. *Kidney International*. 2007; 71: 74–78.
- [34] Bilzer M, Roggel F, Gerbes AL. Role of Kupffer cells in host defense and liver disease. *Liver International: Official Journal of the International Association for the Study of the Liver*. 2006; 26: 1175–1186.
- [35] Itagaki S, Nishida E, Lee MJ, Doi K. Histopathology of subacute renal lesions in mice induced by streptozotocin. *Experimental and Toxicologic Pathology: Official Journal of the Gesellschaft Fur Toxikologische Pathologie*. 1995; 47: 485–491.