



UNIVERSITI PUTRA MALAYSIA

**ISOLATION, IDENTIFICATION AND IN-VITRO FERMENTATION
ACTIVITY OF CELLULOLYTIC BACTERIA FROM THE GUT OF
TERMITES**

MOHAMMAD RAMIN

FP 2008 29

**ISOLATION, IDENTIFICATION AND IN-VITRO FERMENTATION
ACTIVITY OF CELLULOLYTIC BACTERIA FROM THE GUT OF
TERMITES**

By

MOHAMMAD RAMIN

**Thesis Submitted to the School of Graduate Studies, Universiti Putra Malaysia,
in Fulfilment of the Requirements for the Degree of Master of Science**

October 2008



I wish to dedicate this thesis to my beloved family; my father, my mother, Zohreh, Mahmood, Masoud and my wife Narges who always understand and give me loving support.

Abstract of thesis presented to the Senate of Universiti Putra Malaysia in fulfilment
of the requirement for the degree of Master of Science

**ISOLATION, IDENTIFICATION AND FERMENTATION ACTIVITY OF
CELLULOLYTIC BACTERIA FROM THE GUT OF TERMITES**

By

MOHAMMAD RAMIN

OCTOBER 2008

Chairman: Professor Abdul Razak Alimon, PhD

Faculty: Agriculture

Termites are known for their ability to digest high lignocellulolytic compounds, such as wood and fiber materials. Ruminants with the aid of their microorganisms are able to digest fiber materials, however the percentage of digestion is not so high. Therefore, the main objectives of this study were to isolate and identify cellulolytic bacteria from the termites gut and to determine the ability of these bacteria to improve the digestibility of fibrous feed materials by the rumen microflora using the *in-vitro* gas production technique. In this study, cellulolytic bacteria isolated from the gut of termites were used to mix with the rumen microflora on fiber material digestion. Termites were obtained from decayed plant materials and nests from different locations in the vicinity of Universiti Putra Malaysia (UPM). They were identified as the lower termite *Coptotermes curvignathus* (Holmgren) and the higher termite *Macrotermes gilvus* (Hagen). Cellulolytic bacteria from the gut of the lower termite; *Coptotermes curvignathus* (Holmgren) was isolated. The



isolates were cultured aerobically in a medium containing carboxymethyl-cellulose (CMC) at temperature of 30°C. The five isolates obtained were identified based on the Biolog reader chemical test, Bergy's Manual and 16S rRNA sequence homology. The species were identified as: *Bacillus cereus* (isolate 1), *Acinetobacter baumannii* (isolate 5), *Enterobacter aerogenes* (isolate 2), *Enterobacter cloacae* (isolate 3) and *Chryseobacterium kwangyangense* (isolate 4). The Gene Bank NCBI/EMBL accession numbers for the bacterial isolates are EU294508, EU332791, EU305608, EU305609, and EU169201 respectively. *Acinetobacter baumannii* isolate 5 is an aerobic bacterium, while the other four species are facultative anaerobes. The first *in-vitro* experiment by the gas production technique was conducted to examine the digestion and volatile fatty acid production by the five bacterial species grown in the rice straw medium. There were significant differences ($P < 0.05$) in dry matter loss (DM) of rice straw and acetic acid concentration among the five bacterial species. *Acinetobacter baumannii* isolate 5 showed the highest fermentation activity (7.76 mM). The second *in-vitro* experiment also by gas production technique, which was conducted to determine the effect of adding rumen fluid microflora on rice straw digestion. The bacterial cultures were standardized to an OD of 0.5 (10^8 CFU/ml) before adding to the rumen fluid microflora. Rumen fluid was obtained from a fistulated cattle maintained on a grass diet. The facultative bacteria tested were *C. kwangyangense* isolate 4, *E. cloacae* isolate 3 and *E. aerogenes* isolate 2. Digestion of rice straw by rumen fluid microflora was determined with or without adding individual cultures of termites gut bacterial species. The parameters measured were pH, gas (volume), DM loss, acetic, propionic and butyric acid concentrations. The

rumen fluid treated with *E. aerogenes* isolate 2 showed the highest pH (6.76) when compared to the other treatments. The addition of *C. kwangyangense* isolate 4 showed the highest activity ($P < 0.05$) for rice straw DM loss (50%), acetic (17.49 mM), propionic (7.02 mM) and butyric acid (1.67mM) concentration when compared to the other treatments. The lowest fermentation activity was obtained in untreated rumen fluid microflora. A similar experiment was conducted with oil palm fronds as the growth substrate. There was a significant effect ($P < 0.05$) of adding the three bacterial species (*E. cloacae*, *E. aerogenes* and *C. kwangyangense*) to the rumen fluid microflora for the DM loss of oil palm fronds. However, there was no significant difference among the bacterial isolates. On the other hand, the production of volatile fatty acids (VFA) was significantly ($P < 0.05$) higher in the treatment with *C. kwangyangense* isolate 4 when compared to the other bacterial species. All the three bacterial species significantly ($P < 0.05$) increased DM loss and VFAs production when added to rumen fluid microflora grown in rice straw or oil palm fronds.

Abstrak tesis yang dikemukakan kepada Senat Universiti Putra Malaysia sebagai memenuhi keperluan untuk ijazah Master Science

**ISOLASI, IDENTIFIKASI DAN AKTIVITI FERMENTASI IN-VITRO
BAKTERIA SELULOLITIK DARIPADA SALURAN MAKANAN ANAI-
ANAI**

Oleh

MUHAMMAD RAMIN

OKTOBER 2008

Pengerusi: Professor Abdul Razak Alimon, PhD

Fakulti: Pertanian

Anai-anai telah diambil daripada bahan pokok yang mereput dan sarang-sarang di beberapa lokasi tertentu di Universiti Putra Malaysia (UPM). Ia telah dikenalpasti sebagai anai-anai peringkat rendah *Coptotermes curvignathus* (Holmgren) dan anai-anai peringkat tinggi *Macrotermes gilvus* (Hagen). Bakteria selulolitik daripada perut anai-anai peringkat rendah; *Coptotermes curvignathus* (Holmgren) telah diasingkan. Pencilan tersebut dikultur di dalam medium selulosa karbomektil (CMC) dan dibiarkan membiak secara aerobik pada suhu 30°C. Lima isolasi yang diambil di kenalpasti berdasarkan kepada bakteria selulolitik yang diambil daripada anai-anai peringkat rendah; telah diasingkan dan dikenalpasti berdasarkan kepada ujian bacaan kimia Biolog, Bergy's Manual dan jujukan homologi 16S rRNA. Pengenalpastian menggunakan prosedur-prosedur ini telah menunjukkan bakteria yang di isolasi adalah isolasi baru. Isolasi baru tersebut telah dinamakan seperti berikut: *Bacillus*

cereus isolasi 1, *Acinetobacter baumannii* isolasi 5, *Enterobacter aerogenes* isolasi 2, *Enterobacter cloacae* isolasi 3 dan *Chryseobacterium kwangyangense* isolasi 4. Nombor akses bank gen NCBI/EMBL untuk isolasi bakteria tersebut adalah EU294508, EU332791, EU305608, EU305609 dan EU169201. *Acinetobacter baumannii* isolasi 5 ialah bakteria aerobik, manakala empat spesies lain bersifat anaerobik fakultatif. Eksperimen pertama *in-vitro* dengan menggunakan teknik penghasilan gas telah dijalankan untuk mengkaji pencernaan dan penghasilan asid lemak meruap oleh lima spesies bakteria yang tumbuh di dalam substrat jerami padi. Terdapat perbezaan bererti ($P < 0.05$) dalam kehilangan jerami padi dan kepekatan asid asetik di kalangan lima spesies bakteria. *Acinetobacter baumannii* isolasi 5 menunjukkan aktiviti fermentasi yang paling tinggi. Eksperimen *in-vitro* kedua juga menggunakan teknik penghasilan gas dan dijalankan untuk menentukan kesan penambahan bakteria perut anai-anai terhadap pencernaan jerami padi oleh mikroflora cecair rumen. Kultur bakteria telah diapiawaikan pada $OD = 0.5$ (10^8 CFU/ml) sebelum ditambah kepada mikroflora cecair rumen. Cecair rumen mikroflora diperoleh daripada lembu berfistula yang kekal terhadap diet rumput. Bacteria fakultatif yang diuji adalah *C. kwangyangense* isolasi 4, *E. cloacae* isolasi 3 dan *E. aerogenes* isolasi 2. Pencernaan jerami padi oleh mikroflora cecair rumen telah ditentukan dengan atau tanpa menambah kultur individu, isolasi bakteria daripada perut anai-anai. Parameter yang diukur adalah pH, gas (isipadu), kehilangan BK, kepekatan asid asetik and propionik dan butirik. Cecair rumen dirawat dengan *E. aerogenes* menunjukkan pH terendah (pH 6.76) apabila dibandingkan dengan rawatan lain. Penambahan *C. kwangyangense* isolasi 4 menunjukkan aktiviti yang paling tinggi ($P < 0.05$) untuk kehilangan BK jerami padi (50%), kepekatan asid asetik (17.49 mM), asid propionik (7.02 mM) dan asid butirik (1.67 mM) apabila

dibandingkan dengan rawatan lain. Aktiviti fermentasi terendah telah diperolehi dalam mikroflora cecair rumen yang tidak terawat. Eksperimen yg sama dijalankan menggunakan daun pelepah kelapa sawit sebagai substrat pertumbuhan. Terdapat paledzae bererti ($P < 0.05$) apabila penambahan tiga isolasi bakteria kepada mikroflora cecair rumen untuk kehilangan BK pelepah kelapa sawit dilakukan. Walau bagaimanapun, tiada perbezaan bererti di kalangan bakteria isolasi. Penghasilan asid lemak meruwap (ALM) adalah bererti ($P < 0.05$) dan lebih tinggi dalam rawatan menggunakan *C. kwangyangense* isolasi 4 apabila dibandingkan dengan isolasi bakteria lain. Ketiga-tiga spesis bakteria baru meningkatkan kehilangan BK dan penghasilan asid lemak meruwap dengan bererti apabila ditambah ke dalam mikroflora cecair rumen jerami padi atau pelepah kelapa sawit.

ACKNOWLEDGEMENTS

First, I would like to express my utmost gratitude to my highly respected supervisor, Prof. Dr. Abdul Razak Alimon, chairman of my supervisory committee, for his advice, invaluable guidance, hospitality, support and encouragement throughout the period of the study.

I would like to express my deepest thanks and gratitude to Prof. Dr. Norhani Abdullah, Assoc. Prof. Dr. Kamaruzaman Sijam and Assoc. Prof. Dr. Jothi Malar Panandam for their suggestions and guidance towards the completion of this study.

I would like to acknowledge Mr. Cheong Yew Long for identifying the termites during my sample collection, all staff of nutrition, microbiology and genetic laboratory during the study.

I would also like to extend my thanks to the Department Head, Associate Professor Dr. Halimatun Yaakub, and all staff members of the Department of Animal Science, Faculty of Agriculture, and the staff of Graduate School of Universiti Putra Malaysia for helping me in one way or another towards the completion of the study.

My heart felt thanks and appreciation goes to my wife, Narges Baninagarian, for her sacrifice, patience, understanding, help and encouragement throughout the study.

My deepest appreciation to my father, mother, my brothers and sisters for their constant encouragement and support during the course of the study.

Last, but not least, I would like to thank my dear friends, Arash Javanmard, Seyed Reza Hashemi, Abdoreza Soleimani farjam, Alireza Majidi, Mohammad Houshmand, Morteza Karami, Seyed Eeman Noorae, Mokhtar Mohajer, Siti Aisyah

Binti Sidik, Norbaiyah Binti Bahyuddin, Edi Erwan and Saeid Navid for their encouragement throughout my study.



| TABLE OF CONTENTS | | Page |
|------------------------------|---|-------------|
| ABSTRACT | | iii |
| ABSTRAK | | vi |
| ACKNOWLEDGEMENTS | | ix |
| APPROVAL | | xi |
| DECLARATION | | xiii |
| LIST OF TABLES | | xvii |
| LIST OF FIGURES | | xviii |
| LIST OF ABBREVIATIONS | | xix |
| CHAPTER | | |
| 1 | INTRODUCTION | 1 |
| 2 | LITERATURE REVIEW | 4 |
| | 2.1 Termites | 4 |
| | 2.1.1 Termite Classification | 5 |
| | 2.1.2 Termite Gut | 7 |
| | 2.1.3 pH of the Termite Gut | 8 |
| | 2.2 Microorganisms in Termites Gut | 9 |
| | 2.2.1 Bacteria in Termites Gut | 11 |
| | 2.2.2 Protozoa in Termites Gut | 13 |
| | 2.2.3 Termites Food | 14 |
| | 2.2.4 Digestion and Fermentation | 16 |
| | 2.2.5 Production of VFA | 18 |
| | 2.3 Ruminants | 19 |
| | 2.3.1 Ruminants Digestive Tract | 19 |
| | 2.3.2 Microorganisms in the Rumen | 20 |
| | 2.4 Ruminants and Termites | 20 |
| | 2.5 Probiotic Supplements | 22 |
| | 2.6 Usage of Termites | 23 |
| | 2.7 Feed Evaluation and <i>In-vitro</i> Studies | 24 |
| | 2.7.1 <i>In-vitro</i> Studies | 24 |
| 3 | IDENTIFICATION OF TERMITES AND THEIR CELLULOLYTIC BACTERIA | 26 |
| | 3.1 Introduction | 26 |
| | 3.2 Materials and Methods | 27 |
| | 3.2.1 Collection and Identification of Termites | 27 |
| | 3.2.2 Isolation of Gut Bacteria | 27 |
| | 3.2.3 CMC and Cellobiose as Growth Media for Bacteria | 29 |
| | 3.2.4 Gram Stain and OF Test | 30 |
| | 3.2.5 Motility, Oxidase and Catalase Test | 30 |

| | | | |
|----------|--------|---|-----------|
| | 3.2.6 | Electron Microscopy | 31 |
| | 3.2.7 | Bacterial Identification | 32 |
| | 3.2.8 | DNA Extraction | 33 |
| | 3.2.9 | Polymerase Chain Reaction and 16S rRNA Sequence | 33 |
| 3.3 | | Results | 34 |
| | 3.3.1 | Termites | 34 |
| | 3.3.2 | Cellulolytic Bacteria | 38 |
| 3.4 | | Discussion | 52 |
| 4 | | <i>IN-VITRO</i> DIGESTION OF RICE STRAW AND OIL PALM FRONDS BY RUMEN MICROFLORA AND TERMITES GUT BACTERIA | 61 |
| | 4.1 | Introduction | 61 |
| | 4.2 | Materials and Methods | 61 |
| | 4.2.1 | Termites Bacteria | 62 |
| | 4.2.2 | Bacterial Preparation for <i>In-vitro</i> Studies | 62 |
| | 4.2.3 | Bacterial counts | 63 |
| | 4.2.4 | Acetic Acid production from Termites Gut Bacteria | 63 |
| | 4.2.5 | <i>In-vitro</i> Gas Production Technique | 64 |
| | 4.2.6 | Syringe and Sample Preparation | 64 |
| | 4.2.7 | Buffer Preparation | 65 |
| | 4.2.8 | Preparation of Artificial Saliva | 66 |
| | 4.2.9 | Rumen Fluid Collection | 66 |
| | 4.2.10 | Preparation of Buffered Rumen Medium | 66 |
| | 4.3 | Determination of True Dry Matter Digestibility | 67 |
| | 4.4 | Sample Preparation and VFA Determination | 68 |
| | 4.5 | Gas Production and pH Determination | 69 |
| | 4.6 | Experiment 1: <i>In-vitro</i> Digestion of Rice Straw by Bacterial Species from Termites Gut | 69 |
| | 4.7 | Experiment 2: <i>In-vitro</i> Dry Matter Digestibility of Rice Straw by Rumen fluid Microflora and Termite gut bacteria | 71 |
| | 4.8 | Experiment 3: <i>In-vitro</i> Dry Matter Digestibility of OPF by Rumen fluid Microflora and Temite gut bacteria | 73 |
| | 4.9 | Statistical Analysis | 74 |
| | 4.10 | Results | 74 |
| | 4.10.1 | Acetic Acid production from Termite Bacteria | 74 |
| | 4.10.2 | Rice Straw Digestion by Termites Gut Bacteria | 75 |
| | 4.10.3 | Effect of Termites Bacteria on Rice Straw Digestion by Rumen Microflora | 78 |
| | 4.10.4 | Effect of Termites Bacteria on OPF Digestion by Rumen Microflora | 81 |
| | 4.11 | Discussion | 84 |
| 5 | | GENERAL DISSCUSSION AND CONCLUSION, RECOMMENDATION FOR FUTURE RESEARCH | 89 |

| | |
|-----------------------------|-----|
| REFERENCES | 96 |
| APPENDICS | 107 |
| BIODATA OF STUDENT | 118 |
| LIST OF PUBLICATIONS | 119 |



LIST OF TABLES

| Table | | Page |
|-------|--|------|
| 2.1 | Classification of termites | 5 |
| 2.2 | Bacterial isolates from the termites gut | 13 |
| 3.1 | Differentiation between lower and higher termites | 34 |
| 3.2 | Characterization of Isolate 1 | 39 |
| 3.3 | Characterization of Isolate 2 and 3 | 42 |
| 3.4 | Characterization of Isolate 4 | 45 |
| 3.5 | Characterization of Isolate 5 | 48 |
| 3.6 | Bacterial isolates | 52 |
| 4.1 | Experimental design for the first <i>in-vitro</i> experiment | 70 |
| 4.2 | Experimental design for the second <i>in-vitro</i> experiment | 72 |
| 4.3 | Experimental design for the third <i>in-vitro</i> experiment | 74 |
| 4.4 | The effect of termites gut bacterial inoculate on the production of acetic acid | 75 |
| 4.5 | Rice straw dry matter loss and acetic acid production <i>in-vitro</i> digestion using termites gut bacteria | 77 |
| 4.6 | Mean of the dry matter loss, pH, gas production, acetic, propionic, and butyric acid concentration using rice straw as a substrate | 80 |
| 4.7 | Mean of the dry matter loss, pH, gas production, acetic, propionic, and butyric acid concentration using OPF as a substrate | 83 |



LIST OF FIGURES

| Figure | Page |
|--|------|
| 2.1 Soldier termite | 5 |
| 2.2 The gut of higher termite | 7 |
| 2.3 Microbial ecology of the Formosan termite gut | 9 |
| 2.4 Fiber digestions and other metabolic activities in the termite gut | 10 |
| 2.5 Production of VFAs by termite microorganisms | 18 |
| 2.6 Diagrammatic presentation of the size of rumen compared to termite hindgut | 21 |
| 3.1 <i>Macrotermes gilvus</i> (Hagen) belonging to higher termites family | 35 |
| 3.2 The nest of <i>Macrotermes gilvus</i> (Hagen) | 36 |
| 3.3 Faecal combs from the nest of <i>Macrotermes gilvus</i> (Hagen) and fungi's nodule | 36 |
| 3.4 Habitat of <i>Coptotermes curvignathus</i> (Holmgren) | 37 |
| 3.5 <i>Coptotermes curvignathus</i> (Holmgren) | 37 |
| 3.6 Colony of Isolate 1 grown on nutrient agar | 40 |
| 3.7 SEM micrograph of Isolate 1 | 40 |
| 3.8 Colony of Isolate 2 grown on nutrient agar | 41 |
| 3.9 SEM micrograph of Isolate 2 | 42 |
| 3.10 Colony of Isolate 3 grown on nutrient agar | 43 |
| 3.11 SEM micrograph of Isolate 3 | 43 |
| 3.12 Colony of Isolate 4 grown on nutrient agar | 44 |
| 3.13 SEM micrograph of Isolate 4 | 45 |
| 3.14 Negative stain of Isolate 4 | 46 |
| 3.15 Chain form of Isolate 4 | 46 |
| 3.16 Colony of Isolate 5 grown on nutrient agar | 47 |
| 3.17 SEM micrograph of Isolate 5 | 47 |
| 3.18 DNA bands from Isolate 4 | 48 |
| 3.19 PCR product of Isolate 4 | 49 |
| 3.20 DNA bands of all bacterial Isolates (1-5) | 50 |
| 3.21 PCR product of bacterial isolates (1-5) | 50 |
| 4.1 <i>In-vitro</i> gas production technique | 64 |

LIST OF ABBREVIATIONS

| | |
|-------|---|
| IVDMD | <i>In-vitro</i> Dry Matter Digestibility |
| DM | Dry Matter |
| SEM | Standard Error of Mean |
| PCR | Polymerase Chain Reaction |
| GC | Gas Chromatography |
| SEM | Scanning Electron Microscope |
| TEM | Transmission Electron Microscope |
| CMC | Carboxymethyl-cellulose |
| PTA | Phosphate Tungsten Acid |
| NCBI | National Center for Biotechnology Information |
| EMBL | European Molecular Biology Laboratory |
| DNA | Deoxyribonucleic acid |
| NA | Nutrient Agar |
| NB | Nutrient Broth |
| OD | Optical Density |
| CFB | <i>Cytophaga-Flavobacterium-Bacteroides</i> |
| VFA | Volatile Fatty Acid |
| CFU | Colony Forming Unit |
| NDS | Neutral-Detergent Solution |
| EDTA | Ethylenediamine Tetraacetic Acid |
| FID | Flame Ionization Detector |
| SCFA | Short Chain Fatty Acids |
| SAS | Statistical Analysis System |
| OPF | Oil Palm Fronds |
| ANOVA | Analysis of Variance |
| DFM | Direct Fed Microbial |
| PKC | Palm Kernal Cake |
| TSBA | Tryptone Soya Broth Agar |



CHAPTER 1

INTRODUCTION

Termites are distributed throughout the world, but they are more abundant in tropical regions especially in countries like Malaysia (Ohkuma *et al.*, 2001). There are two types of termites, namely lower or higher termites depending on their morphology and physiological characteristics (Yow, 1992). Both types of termites are important insects due to their ability to digest high fibrous materials which contain cellulose, hemicellulose and lignin (Harazona *et al.*, 2003).

The digestive tract of termites comprises of several compartments, such as fore gut, mid gut and hindgut, which the hind gut contains the intestinal microbiota and are initially considered as “fermentation chambers” (Brune and Friedrich, 2000). The “fermentation chamber” of the termite gut is analogous to the rumen of ruminants like sheep and cattle where the termite gut is considered as the smallest fermentation chamber when compared to the rumen of ruminants (Brune, 1998). The conditions of the rumen as well as the fermentation chamber of the lower termite provided by the host allows the prolific growth of microorganisms which include bacteria, protozoa and fungi (Wenzel *et al.*, 2002) where their main function is to digest fibrous feed materials (Brune, 2007).

Digestion occurs in two stages. Firstly the hydrolysis of cell wall compounds like cellulose and hemicellulose and secondly the fermentation of the products to short chain fatty acids such as acetic, propionic, and butyric acid, which then are absorbed



by the host as a main energy source (Breznak and Brune, 1994; Brune, 1998; Konig, 2006).

The *in-vitro* gas production technique has been well recognized as a tool for estimating fermentation activity of microorganisms and feed digestion under various conditions (Fievez *et al.*, 2005). Various feed materials and feed additives can be easily formulated and tested by using this technique.

Extensive studies have been conducted on rumen microflora and their fermentation activities (Hobson, 1988). It was reported that one of the main constraint in ruminant feeding is the poor digestibility of lignocellulose materials (Hobson, 1988) and certain feed additives such as *Saccharomyces cerevisiae* (Callaway and Martin, 1997; Lynch and Martin, 2002), *Aspergillus oryzae* fermentation extract (Beharka and Nagaraja, 1993) have been utilized to improve fermentation in the rumen. In this case the improvement is on the fermentation process rather on the break down of lignocellulotic materials. Hence, continuous efforts are needed to develop new strategies in improving complex polysaccharide digestion in the rumen. As such, termite gut cellulolytic bacteria which are well known for their high fermentation activity on lignocellulotic materials may have the potential as an alternative feed additive.

To date, there is a lack of information on the cellulolytic bacterial species present in the gut of local termites. Also, there is no study on the possibility of using termite's gut bacteria to improve fibrous feed digestion by using rumen fluid microflora.

Objectives

Therefore, the main objectives of this study were to isolate cellulolytic bacteria from the termite's gut and to determine the ability of these bacteria to improve the digestibility of fibrous feed materials by the rumen microflora using the *in-vitro* gas production technique.

The specific objectives were to:

- collect termites found in the vicinity of UPM and to identify their species
- isolate and identify cellulolytic bacteria from the termites gut
- determine the effects of adding termites bacteria to rumen fluid microflora on fibrous feed digestion *in-vitro*

CHAPTER 2

LITERATURE REVIEW

2.1 Termites

Termites are insects commonly called white ants, from the order Isoptera which originates from the Greek word, where 'isos' means equal and 'pteron' means wing which refers to the two pairs of identical wings in the adult (Thorne and Carpenter, 1992). They are small to medium with white to dark brown body (Varma *et al.*, 1994) as the soldier of the lower family group (*Coptotermes curvignathus*) is given in figure 2.1, which shows the yellow body color and a small length of the head capsule. Their similarity with ants is their shape and behavior. However, morphologically and phylogenetically they are very different from ants. Termites are more closely related to cockroaches rather than ants. Cockroaches and termites are examples of insects used for studying the role of symbionts for cellulose digestion by the microorganisms which live in their gut (Slaytor, 1992). Approximately 1900 living and fossil species of termites have been identified (Lee and Wood, 1971) and the fossil records indicated that termites originated 220 million years ago. Majority of termites have been found within tropical regions like Malaysia (Ohkuma *et al.*, 2001). Termites play a significant role in decomposing lignocelluloses by degrading wood and dead trees and also in soil fertilization (Varma *et al.*, 1994).

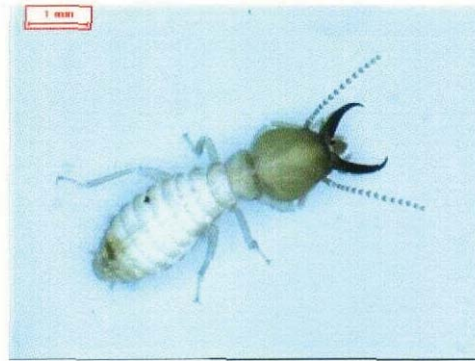


Figure 2.1. Soldier termite (Lower family)

With permission from Mr. Cheong Yew Long – Bar: 1mm

2. 1. 1 Termite Classification

Termites can be classified into six families and fifteen subfamilies as shown in Table 2. 1 (Lee and Wood, 1971). Some families are divided to sub families.

Table 2.1. Classification of termites

| Family | subfamily |
|------------------------|---|
| <i>Mastotermitidae</i> | – |
| <i>Kalotermitidae</i> | – |
| <i>Hodotermitidae</i> | <i>Termopsinae, Stolotermitinae</i> <i>Porotermitinae, Cretatermitinae (fossil)</i> <i>Hodotermitinae</i> |
| <i>Rhinotermitidae</i> | <i>Psammotermitinae, Heterotermitinae</i> <i>Stylotermitinae, Coptotermitinae</i> <i>Termitogetoninae</i> <i>Rhinotermitinae</i> |
| <i>Serritermitidae</i> | – |
| <i>Termitidae</i> | <i>Amitermitinae, Termitinae</i> <i>Macrotermitinae (fungus growing termite)</i> <i>Nasutitermitinae</i> |

(Source: Lee and Wood, 1971)

The first five families are known as lower termites and the sixth family (Termitidae), which includes approximately 75% of the known species and is the evolutionary