



**UNIVERSITI PUTRA MALAYSIA**

**PERFORMANCE EVALUATION OF OPTICAL CDMA RING NETWORK  
DUE TO SELF INTERFERENCE INDUCED BY POWER CIRCULATION**

**ZOOL HILMI BIN MOHAMED ASHARI**

**FK 2008 53**



**PERFORMANCE EVALUATION OF OPTICAL CDMA RING NETWORK  
DUE TO SELF INTERFERENCE INDUCED BY POWER CIRCULATION**

**ZOOL HILMI BIN MOHAMED ASHARI**

**MASTER OF SCIENCE  
UNIVERSITI PUTRA MALAYSIA**

**2008**



**PERFORMANCE EVALUATION OF OPTICAL CDMA RING NETWORK  
DUE TO SELF INTERFERENCE INDUCED BY POWER CIRCULATION**

**By**

**ZOOL HILMI BIN MOHAMED ASHARI**

**Thesis Submitted to the School of Graduate Studies, Universiti Putra Malaysia, in  
Fulfilment of Requirements for the Degree of Master of Science**

**June 2008**



To My Beloved Parents, Wife and Kids



Abstract of the thesis presented to the Senate of Universiti Putra Malaysia in fulfilment of the requirements for the degree of Master of Science

**PERFORMANCE EVALUATION OF OPTICAL CDMA RING NETWORK  
DUE TO SELF INTERFERENCE INDUCED BY POWER CIRCULATION**

By

**ZOOL HILMI BIN MOHAMED ASHARI**

**June 2008**

**Chairman: Professor Mohamad Khazani Abdullah, PhD**

**Faculty: Engineering**

Presently, there is great interest in the telecommunication research community and industries on the optical code multiple access (OCDMA) techniques. This is due to the huge bandwidth offered by the optical link, highly efficient optical signal processing and decreasing cost of optical components. The performance of OCDMA systems depend on the code properties and detection scheme. In this thesis, an OCDMA system for a ring topology based on K-S code was proposed to be implemented in the metro environment. K-S code is a new code for Optical CDMA with variable weight greater than 2. In this thesis the weight of 4 is chosen. The code possesses ideal cross correlation properties which can reduce multiple access interference (MAI) and noise. However, there are two main types of interferences exist in the OCDMA ring topology. Besides MAI, there are another interference due to the circulation of power in the ring namely self-interference. It will deteriorate the next concurrent data stream for the same user to be transmitted into the ring and could make the system performance decreased.



A direct detection scheme was used to eliminate MAI and hence only the effect of self-interference was investigated. Before performing the simulation, limited theoretical results on receive power were developed to show the trend of receive power at each receiver. The formula is depended on the transmitted power, fiber length, coupling ratio, number of nodes and the number of circulating power in the ring. The performance of the ring network was then simulated using commercial simulation software, OptiSystem Version 5.0. The network performance is evaluated against several design parameters by comparing the signal turns in the first and second transmission by referring to the bit error rate, BER, received power,  $P_{sr}$  and the eye patterns. In this thesis, it was found that the effect of the self-interference is determined by the transmitted power, fiber length, coupling ratio and the bit rate. It proves that the self-interference is increased with the increment of transmitted power. It also experience losses with the increment of fiber span but the system will suffer the serious effect when the fiber length is shorter than 30 km at 1Gbps. Results also proves that the self-interference effect is worst at 30% coupling ratio although the system performance is better with the increment of coupling ratio until certain point. Finally, the best transmission rate for this system is 1Gbps while there were another optimum values for each parameter supported by the system in order to minimize the self-interference.



Abstrak tesis yang dikemukakan kepada Senat Universiti Putra Malaysia sebagai memenuhi keperluan untuk ijazah Master Sains

**KAJIAN PRESTASI RANGKAIAN CINCIN BAGI PEMULTIPLEKSAN  
PEMBAHAGIAN KOD OPTIKAL YANG DISEBABKAN OLEH GANGGUAN  
SENDIRI YANG TERHASIL DARIPADA KITARAN KUASA**

Oleh

**ZOOL HILMI BIN MOHAMED ASHARI**

**Jun 2008**

**Pengerusi:           Profesor Mohamad Khazani Abdullah, PhD**

**Falkulti:           Kejuruteraan**

Ketika ini terdapat minat yang begitu mendalam dikalangan komuniti pengkaji bidang telekomunikasi dan industri terhadap teknik capaian pelbagai kod bagi gentian optik (OCDMA). Ini disebabkan oleh gentian optik menawarkan kelebihan seperti lebarjalur yang besar, pemprosesan isyarat yang efisien serta dapat mengurangkan kos perolehan komponen-komponen optik. Prestasi sebarang sistem CDMA sangat bergantung kepada ciri-ciri kod dan juga teknik pengesanan sistem tersebut. Dalam tesis ini, satu sistem OCDMA bagi topologi cincin menggunakan kod K-S telah diperkenalkan untuk di aplikasikan dalam kawasan metro. Kod K-S adalah satu kod yang baru diperkenalkan dimana ia mempunyai pemberat yang boleh diubah dan lebih besar daripada 2. Dalam tesis ini pemberat yang dipilih adalah 4. Kod ini mempunyai sifat-sifat sekatan bersilang yang unggul yang dapat menghapuskan gangguan capaian pelbagai (MAI) dan mengurangkan hingar. Walau bagaimanapun, terdapat dua jenis gangguan yang wujud di dalam topologi cincin. Disamping MAI, terdapat satu lagi gangguan yang disebabkan



oleh peredaran kuasa di dalam rangkaian tersebut dikenali sebagai gangguan sendiri. Ia akan mengganggu penghantaran paket-paket data seterusnya bagi pengguna yang sama ke dalam sistem rangkaian dan menyebabkan prestasi sistem merosot.

Satu sistem yang dikenali sebagai sistem pengesanan langsung telah digunakan untuk menghapuskan MAI dan oleh itu hanya kesan daripada gangguan sendiri yang akan dikaji. Sebelum membuat simulasi, satu formula terhadap telah diterbitkan bagi menunjukkan corak kuasa yang diterima pada setiap penerima. Ia bergantung kepada kuasa penghantaran, panjang gentian optik, nisbah pengganding, bilangan nod dan juga bilangan pengulangan kuasa di dalam rangkaian cincin. Seterusnya, prestasi sistem rangkaian cincin telah disimulasikan menggunakan perisian simulasi komersil, Optisistem versi 5.0. Ia dinilai berdasarkan beberapa parameter rekabentuk melalui cara membandingkan penghantaran paket data pertama dan paket data yang kedua dengan merujuk kepada kadar ralat bit, (BER), kuasa terima,  $P_{sr}$  dan corak mata.

Dalam tesis ini, telah didapati bahawa kesan gangguan sendiri dipengaruhi oleh kuasa penghantaran, panjang gentian optik, nisbah pengganding dan juga kadar bit. Dibuktikan bahawa kesan gangguan sendiri meningkat dengan pertambahan kuasa penghantaran. Ia mengalami kemerosotan dengan pertambahan panjang gentian optik dan memberi kesan yang serius jika panjang gentian optik adalah kurang daripada 30 km pada 1Gb sesaat. Keputusan kajian juga menunjukkan gangguan sendiri adalah kritikal pada 30% kadar nilai pengganding walaupun prestasi sistem bertambah baik dengan pertambahan kadar nilai pengganding pada titik-titik tertentu. Akhirnya, sistem ini beroperasi dengan





berkesan pada kadar bit 1Gb sesaat. Selain itu, terdapat nilai-nilai optimum bagi setiap parameter yang dapat disokong oleh sistem ini dalam mengurangkan kesan gangguan sendiri tersebut.



## ACKNOWLEDGEMENTS

All praise and gratitude be to Allah, the most Beneficent, and the most Merciful and peace upon our beloved Prophet Muhammad S.A.W.

First and foremost, I would like to express my appreciation and sincere gratitude to my dear supervisor, Professor Dr Mohamad Khazani Abdullah for his continual support, and endless encouragement and patience towards completing the research. These special thanks also dedicated to my supervisory committee member; Dr. Salasiah Hitam for her feedback and comments which helped a lot in improving the project.

To Dr.-Ing. Ahmad Fauzi Abas and Mr. Dhazhiril Abdul Samad who have helped me a lot in this project, I am deeply indebted. My appreciation also goes to all my colleagues from, Photonics Lab for their support and encouragement. Working with all of you is a good experience that could never be forgotten.

A huge appreciation to my parents, Mohamed Ashari Abdul Majid and Aminah Mohd. Zin, who keep encouraging and supporting me in whatever I do, thank you very much. Last but not least, I would like to express my deepest appreciation to my beloved wife, Anis Aini, my daughter, Amaleen Zahra and my son Ahmed Aqil Zhorfan for their love, patience and understanding in all my time of need.



I certified that an Examination Committee has met on 13 June 2008, to conduct the final examination of Zool Hilmi b. Mohamed Ashari on his Master of Science thesis entitled “Performance Evaluation Of Optical Cdma Ring Network Due To Self Interference Included By Power Circulation” in accordance with Universiti Pertanian Malaysia (Higher Degree) Act 1980 and Universiti Pertanian Malaysia (Higher Degree) Regulations 1981. The committee recommends that the candidate be awarded a relevant degree. Member of the Examination Committee are as follows:

**Sudhanshu Shekhar Jamuar, Ph.D.**

Professor  
Department of Electrical and Electronics Engineering  
Faculty of Engineering  
Universiti Putra Malaysia  
(Chairman)

**Mohd. Adzir Mahdi, Ph.D.**

Associate Professor  
Department of Computer and Communication Systems Engineering  
Faculty of Engineering  
Universiti Putra Malaysia  
(Member)

**Ahmad Fauzi Abas, Ph.D.**

Lecturer  
Department of Computer and Communication Systems Engineering  
Faculty of Engineering  
Universiti Putra Malaysia  
(Member)

**Faidz Abd. Rahman, Ph.D.**

Associate Professor  
Faculty of Engineering  
Universiti Multimedia  
(External Examiner)

---

**HASANAH MOHD. GHAZALI, Ph.D.**

Professor/Deputy Dean  
School of Graduate Studies  
Universiti Putra Malaysia

Date :



This thesis was submitted to the Senate of Universiti Putra Malaysia and has been accepted as fulfilment of the requirement for the degree of Master of Science. The members of the Supervisory Committee were as follows:

**Mohamad Khazani Abdullah, PhD**

Professor  
Department of Computer and Communication Systems Engineering  
Faculty of Engineering  
Universiti Putra Malaysia  
(Chairman)

**Salasiah Hitam, PhD**

Lecturer  
Department of Computer and Communication Systems Engineering  
Faculty of Engineering  
Universiti Putra Malaysia  
(Member)

---

**AINI IDERIS, PhD**

Professor and Dean  
School of Graduate Studies  
Universiti Putra Malaysia

Date: 13 November 2008



## **DECLARATION**

I declare that the thesis is my original work except for the quotations and citations, which have been duly acknowledged. I also declare that it has not been previously and is not concurrently submitted for any other degree at Universiti Putra Malaysia or at any other institution.

---

**ZOOL HILMI BIN MOHAMED ASHARI**

Date: 10 October 2008



## TABLE OF CONTENTS

<b>DEDICATION</b>	<b>ii</b>
<b>ABSTRACT</b>	<b>iii</b>
<b>ABSTRAK</b>	<b>v</b>
<b>ACKNOWLEDGEMENTS</b>	<b>viii</b>
<b>APPROVAL</b>	<b>ix</b>
<b>DECLARATION</b>	<b>xi</b>
<b>LIST OF TABLES</b>	<b>xv</b>
<b>LIST OF FIGURES</b>	<b>xvi</b>
<b>LIST OF ABBREVIATIONS</b>	<b>xix</b>
<b>CHAPTER 1</b>	<b>1</b>
<b>INTRODUCTION</b>	<b>1</b>
1.1 Background	1
1.2 Motivation and Problem Statement	3
1.3 Objectives	5
1.4 Scope of Works	5
1.5 Thesis Overview	8
<b>CHAPTER 2</b>	<b>9</b>
<b>A REVIEW OF OPTICAL CODE DIVISION MULTIPLE ACCESS</b>	<b>9</b>
2.1 Introduction	9
2.2 History of Optical CDMA	9
2.3 Multiplexing and Multiple Access Techniques	10
2.4 Fiber Optic Multiplexing Techniques	12
2.4.1 Frequency Division Multiplexing (FDM)	12
2.4.2 Time Division Multiplexing (TDM)	13
2.4.3 Wavelength Division Multiplexing (WDM)	13
2.4.4 Optical Code Division Multiplexing (OCDM)	14
2.5 Comparative Discussion of Various Multiple Access Schemes	15
2.6 Optical Code Division Multiple Access (OCDMA) Systems	17
2.6.1 Coherent OCDMA Systems	18
2.6.2 Incoherent OCDMA Systems	22
2.7 Codes for OCDMA	25
2.7.1 Prime Code	26
2.7.2 Optical Orthogonal Code	26
2.7.3 Modified Frequency Hopping Code	27
2.7.4 DW And K-S Codes	27
2.8 Elements of Optical Code Division Multiple Access System	34



2.9	OCDMA Applications	36
2.9.1	Local Area Network (LAN) / Access Network	36
2.8.2	OCDMA for Metropolitan Area Network	37
2.9	Conclusion	40
<b>CHAPTER 3</b>		<b>43</b>
<b>METHODOLOGY</b>		<b>43</b>
3.1	Introduction	43
3.2	Simulation Analysis	44
3.2.1	Design Parameter	44
3.2.2	Performance Parameter	47
3.3	Model of the Ring Network	49
<b>CHAPTER 4</b>		<b>51</b>
<b>MULTIPLE ACCESS INTERFERENCE, SELF-INTERFERENCE AND DIRECT DETECTION TECHNIQUE</b>		<b>51</b>
4.1	Introduction	51
4.2	Multiple Access Interference (MAI) and Self-Interference	51
4.3	OCDMA Detection Scheme	53
4.3.1	Complementary Subtraction Technique	53
4.3.2	Direct Detection Technique	54
4.4	Modeling the OCDMA Ring Network	56
4.5	Calculated Results	60
4.5.1	Circulation effect in the Ring Network	61
4.5.2	Effect of Distance on Power Receive	64
4.5.3	Effect of Power Transmit on Power Receive	67
4.5.4	Effect of Number of Nodes on Power Receive	68
4.5.5	Effect of Coupling Ratio on Power Receive	71
4.6	Conclusion	73
<b>CHAPTER 5</b>		<b>74</b>
<b>THE PERFORMANCE OF K-S CODE IN OCDMA RING NETWORK WITH DIRECT DETECTION TECHNIQUE</b>		<b>74</b>
5.1	Introduction	74
5.2	Simulation Setup for OCDMA Ring Network	74
5.3	Simulation Results for OCDMA Ring Network	78
5.3.1	Receiver Sensitivity Test	79



5.3.2	Interference Power Test	80
5.3.3	Effect of Distance in OCDMA Ring Network: Single Transmitter	81
5.3.4	Effect of Transmitted Power in OCDMA Ring Network: Single Transmitter	86
5.3.5	Effect of Coupling Ratio in OCDMA Ring Network: Single Transmitter	88
5.3.6	Effect of Bit Rate in OCDMA Ring Network: Single Transmitter	93
5.3.7	Effect of Distance in OCDMA Ring Network: Multiple Transmitters	95
5.3.8	Effect of Input Power in OCDMA Ring Network: Multiple Transmitters	97
5.3.9	Effect of Coupling Ratio in OCDMA Ring Network: Multiple Transmitters	100
5.3.10	Effect of Bit Rate in OCDMA Ring Network: Multiple Transmitters	103
5.4	Comparison Between Theoretical and Simulation Results	105
5.5	Conclusion	107
<b>CHAPTER 6</b>		<b>108</b>
<b>CONCLUSION AND FUTURE WORKS</b>		<b>108</b>
6.1	Conclusion	108
6.2	Future Works	109
<b>REFERENCES</b>		<b>111</b>
<b>BIODATA OF STUDENT</b>		<b>117</b>
<b>LIST OF PUBLICATIONS</b>		<b>118</b>





## LIST OF TABLES

<u>Table</u>		<u>Page</u>
Table 2-1	Advantages and disadvantages of Optical Multiple Access Schemes	16
Table 2.2	Example of K-S ( $W = 4$ ) Code Sequences	32
Table 3-1	Parameters for the singlemode fiber that are provided in the Optysistem 5.0	46
Table 4-1	Typical Parameters Used In the Calculation	61



## LIST OF FIGURES

<u>Figure</u>	<u>Page</u>
Figure 1-1: Optical Network hierarchy: long-haul, metro, and access networks	2
Figure 1-2 A General Study Model of This Research Work Based on K-Chart	7
Figure 2-1 Delayed Lines Based Coherent Direct Sequence OCDMA [26].	20
Figure 2-2 Time Spread Coherent OCDMA	21
Figure 2-3 Frequency Hopping OCDMA [27].	23
Figure 2-4 OCDMA Transmitter Encoding	24
Figure 2-5 The OSQDMA System Setup	25
Figure 2-6 Optical CDMA Elements	35
Figure 2-7 The classification of OCDMA systems and its codes.	42
Figure 3-1 A simple schematic block diagram of ring network consisting of 4 nodes.	49
Figure 4-1 Optical CDMA System Using Complementary Subtraction Technique	54
Figure 4-2 Optical CDMA System Using Direct Detection Technique	55
Figure 4-3 Model of OCDMA ring network	57
Figure 4-4 $P_{sr}$ versus Number of Turn at Various Receiver (Y) for Case 1	62
Figure 4-5 $P_{sr}$ versus Number of Turns at Various Receiver (Y) for Case 2	63
Figure 4-6 $P_{sr}$ versus Distance at Receiver Y3 for Case 1	65
Figure 4-7 $P_{sr}$ versus Distance at Receiver Y3 for Case 2	66
Figure 4-8 $P_{sr}$ versus $P_{tx}$ at Receiver Y3 for Case 1	67
Figure 4-9 $P_{sr}$ versus $P_{tx}$ at Receiver Y3 for Case 2	68

Figure 4-10	$P_{sr}$ versus Number of Nodes at Receiver Y3 for Case 1	69
Figure 4-11	$P_{sr}$ versus Number of Nodes at Receiver Y3 for Case 2	70
Figure 4-12	$P_{sr}$ versus Coupling Ratio at Receiver Y3 for Case 1	71
Figure 4-13	$P_{sr}$ versus Coupling Ratio at Receiver Y3 for Case 2	72
Figure 5-1	Simulation Setup for OCDMA Ring Network System	75
Figure 5-2	Transmitter and Receiver Sections for OCDMA Rig Network	77
Figure 5-3	Receiver Sensitivity for OCDMA Ring Network	79
Figure 5-4	Simple setup for Interference Test	80
Figure 5-5	Interference Power Effect in OCDMA Ring Network	81
Figure 5-6	The Effect of Distance on Received Power for Single Transmitter	83
Figure 5-7	The Effect of Distance on System Performance for Single Transmitter	84
Figure 5-8	The Differences between Two Eye Patterns at 10 km Fiber Distance. Left: Eye Pattern for First Signal turn; Right: Eye Pattern for Second Signal turn.	85
Figure 5-9	The Eye Patterns at 60 km Fiber Distance. Left: Eye Pattern for First Data Packet; Right: Eye Pattern for Second Signal turn.	85
Figure 5-10	Received Power versus Transmitted Power for Single Transmitter	86
Figure 5-11	Effect of Transmitted Power on BER for Single Transmitter	88
Figure 5-12	The Effect of Coupling Ratio on Received Power for Single Transmitter	89
Figure 5-13	The Effect of Coupling Ratio on System Performance for Single Transmitter	90
Figure 5-14	The Eye Pattern Diagram for First Signal turn (5.14(a)), and Second Signal turn (5.14(b)). Left: 10% coupling Ratio; Center:30% Coupling Ratio; Right: 50% Coupling Ratio	92
Figure 5-15	The Effect of Bit Rate on System Performance for Single	



	Transmitter	93
Figure 5-16	The Differences between Two Eye Patterns at 700 Mbps for the First and Second Signal turn Signal	94
Figure 5-17	The Quite Similar Eye Pattern Diagrams at 1.5 Gbps	95
Figure 5-18	The Effect of Distance on Received Power for Multiple Transmitters	96
Figure 5-19	The Effect of Distance on System Performance for Multiple Transmitters	97
Figure 5-20	Received Power versus Transmitted Power for Multiple Transmitter	98
Figure 5-21	Effect of Transmitted Power on BER for Multiple Transmitters	99
Figure 5-22	The Effect of Coupling Ratio on Received Power for Multiple Transmitters	101
Figure 5-23	Effect of Coupling Ratio on System Performance for Multiple Transmitters	103
Figure 5-24	The Effect of Bit Rate on System Performance for Multiple Transmitters	104
Figure 5-25	The Differences between Two Eye Patterns at 700 Mbps for the First (Left) and Second Signal turn Signal (Right)	105
Figure 5-26	$P_{sr}$ versus the distance Based on the Simulation and Theoretical Calculation	106
Figure 5-27	$P_{sr}$ versus the Coupling Ratio Based on the Simulation and Theoretical Calculation	106



## LIST OF ABBREVIATIONS

BER	-	Bit Error Rate
CD	-	Chromatic Dispersion
CD	-	Collision Detection
CDM	-	Code Division Multiplexing
CDMA	-	Code Division Multiple Access
CSMA	-	Carrier Sense Multiple Access
DW	-	Double Weight
FBG	-	Fiber Bragg Grating
FDMA	-	Frequency Division Multiple Access
FH	-	Frequency-Hopping
FTTH	-	Fiber to the Home
GF	-	Galois Field
ISI	-	Inter Symbol Interference
LAN	-	Local Area Network
LCM	-	Liquid Crystal Modulator
LED	-	Light Emitting Diode
MAI	-	Multiple Access Interference
MAN	-	Metropolitan Area Network
MDW	-	Modified Double Weight
MFH	-	Modified Frequency Hopping
NRZ	-	Non-Return to Zero



OAM	-	Operation-Administration-Maintenance
OCDM	-	Optical Code Division Multiplexing
OCDMA	-	Optical Code Division Multiple Access
OOC	-	Optical Orthogonal Codes
OOK	-	On/Off Keyed
OSCDMA	-	Optical Spectrum Code Division Multiple Access
PIIN	-	Phase Induced Intensity Noise
PLC	-	Planar Lightwave Circuit
PMD	-	Polarization Mode Dispersion
PMP	-	Point to Multipoint
PON	-	Passive Optical Network
PRBS	-	Pseudo Random Binary Sequence
RF	-	Radio Frequency
SAC	-	Spectral Amplitude Coding
SMF	-	Single Mode Fiber
SNR	-	Signal-to-Noise Ratio
TDM	-	Time Division Multiplexing
TDMA	-	Time Division Multiple Access
WAN	-	Wide Area Network
WDM	-	Wavelength Division Multiplexing
WDMA	-	Wavelength Division Multiple Access
WHTS	-	Wavelength Hopping Time Spreading



## CHAPTER 1

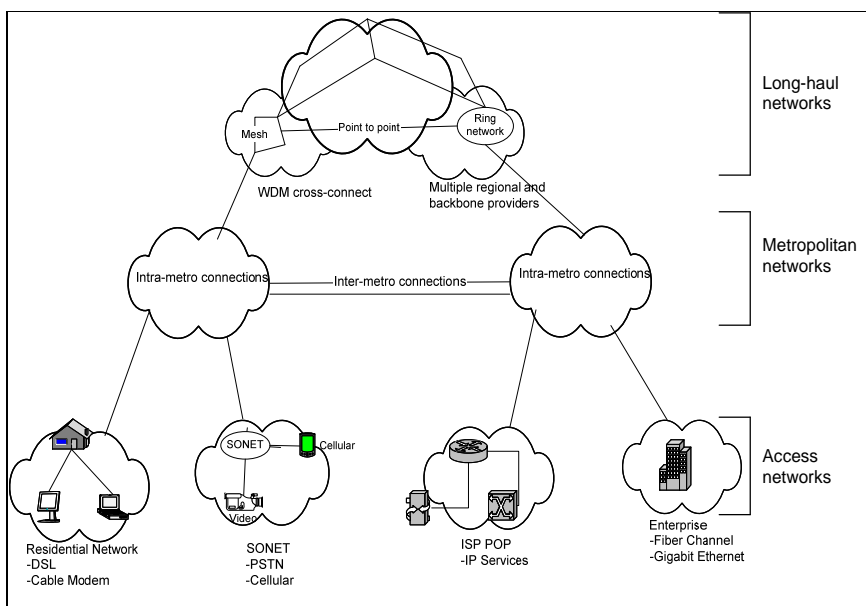
### INTRODUCTION

#### 1.1 Background

Since the 1970's, telecommunication technology has made great advances, offering capabilities that were unthinkable a decade earlier. Today, the bandwidths possible with the new transmission technologies are vast and virtually unlimited, offering the ability to carry large numbers of voice, data and video signals [1] making the telecommunication sector as one of the fastest-growing fields in the world. It also has become one of the most important infrastructures that are very essential to the socio-economic well-being of any nation. A major advancement in telecommunications is the implementation of optical communication system as an alternative to the traditional media such as twisted wire pair and coaxial cable. Optical fiber communication systems play a main part of the digital communications in backbone networks, in Metropolitan Area Network (MAN) and Wide Area Network (WAN), in the access networks with Fiber to The – *Home, Curb, Cabinet, Building* (FTTX) and the high speed Local Area Network (LAN). Optical fiber communications offers several advantages over the traditional media. It offers high-speed transmission with virtually unlimited bandwidth. It also allows longer transmission distances between amplifiers or repeaters in the fiber span and sometimes in certain conditions, even amplifiers or repeaters are not needed at all. It is also non-conductive and is subsequently immune to electromagnetic interferences.



Telecommunication networks are usually divided into four hierarchies; long haul, metropolitan, access and local network. The top hierarchy is backbone or long haul network, which is a long distance network, ranging from several hundred to thousands of kilometers. It connects systems together throughout a country, to outside the country. Metropolitan networks are typically tens to a few hundred kilometers interconnecting between the backbone and access network. An access network is that part of a communications network which connects subscribers to their immediate service provider before distributed to a small region of space, typically a single building, which is known as local network. This is illustrated in Figure 1.1, which shows a high-level view of the overall network hierarchy [2].



**Figure 1-1: Optical Network hierarchy: long-haul, metro, and access networks**



## 1.2 Motivation and Problem Statement

Optical Code Multiple Access communication systems have been given an intensive interest currently. This is due to the huge bandwidth offered by the optical links and the ultra-high optical signal processing speed bestowed by optical components. In OCDMA systems, all users can simultaneously share the same channel, asynchronously access the network and flexibly utilize the broad bandwidth [3-4]. As a result, the OCDMA is regarded as a promise multiple access technology. The most important consideration in OCDMA systems is the code design. Until today, many codes have been proposed for OCDMA such as Hadamard, Optical Orthogonal Codes (OOC), Prime Codes, and Modified Frequency Hopping (MFH) codes. However these codes suffer from various limitations; the codes are either too long (e.g. Optical Orthogonal Codes and Prime Codes), the constructions are complicated or the cross-correlation are not ideal. In 2004, a new code structure for OCDMA systems was developed namely K-S Code [5]. This code possesses numerous advantages including the efficient and easy code construction, simple encoder and decoder design, existence for every natural number  $n$ , ideal cross-correlation ( $\lambda = 1$ ) and also higher Signal to Noise Ratio (SNR). K-S Code will be the code of choice used in this thesis.

So far researches have been mostly focusing on the use of OCDMA in star topology. A LAN network with bus topology also has been reported recently [3]. However, due to the majority of fiber networks today are ring topology, it is chosen as the architecture for this research. Although star is the most widely used topology in today's FTTX access

